



Williamsburg-James City County Public Schools
OFFICIAL STUDENT ENROLLMENT REPORT

September 30, 2003

WILLIAMSBURG-JAMES CITY COUNTY PUBLIC SCHOOLS

Williamsburg, Virginia

Official Student Enrollment Report

September 30, 2003



Table of Contents

Introduction	Page 3
FY 2003-2004 Fall Membership	Page 4
Graph ~ Growth in Total Enrollment by Year	Page 5
Total Enrollment by Grade	Page 6
Graph ~ Enrollment by Grade	Page 7
Growth in Enrollment by School	Page 8
Graph ~ Growth in Total Enrollment	Page 9
Graph ~ Enrollment by Jurisdiction	Page 10
Graph ~ Enrollment by Ethnicity	Page 11
FY 2003-2004 September 30 th Enrollment	Page 12
School Level Demographics and Enrollment	Page 13
Division Level Demographics	Page 25
Graph ~ Enrollment by Gender	Page 26
<i>Appendix:</i>	
FY2003-2004 Enrollment/Staffing Analysis	Appendix

Finance Department ~ October 2003



INTRODUCTION

For the 2003-2004 School Year, the enrollment for the Williamsburg-James City County Public Schools has continued to increase. From the September 30, 2002 enrollment level of 8,553 students, the School Division experienced an increase of 406 additional students, resulting in a September 30, 2003 total of 8,959. This increase of 406 students equates to a growth rate of 4.75 percent, compared to 1.74 percent growth in 2002-2003.

The updated information within these tables will serve as a partial basis for determining next year's enrollment projection, as well as projections for subsequent years. A great deal of other information is used to prepare these projections but the current year's experience will rank as a major source of data on which to predict future events.

As was the case in last year's report, this document provides detailed information about the composition of this year's enrollment, its dispersal among schools, and how this year's student population compares to the previous years. Other tables include such information as the percentage of students on the federal free and reduced lunch program at each school.

The table, entitled *2003-04 September 30 Enrollment* shows a breakdown of the enrollment between the City of Williamsburg and James City County and by race for each school and grade level. Other tables within this document provide more data about this breakdown, as well as race and gender statistics by grade level for each school, and actual class size at each school.

In the appendix, the table entitled *Enrollment/Staff Analysis* shows trends by grade and school for the past two years. It also has information about the average class size and number of teachers at each grade level in the elementary and middle schools. Finally, the analysis presents the variance between projected enrollment and actual enrollment.

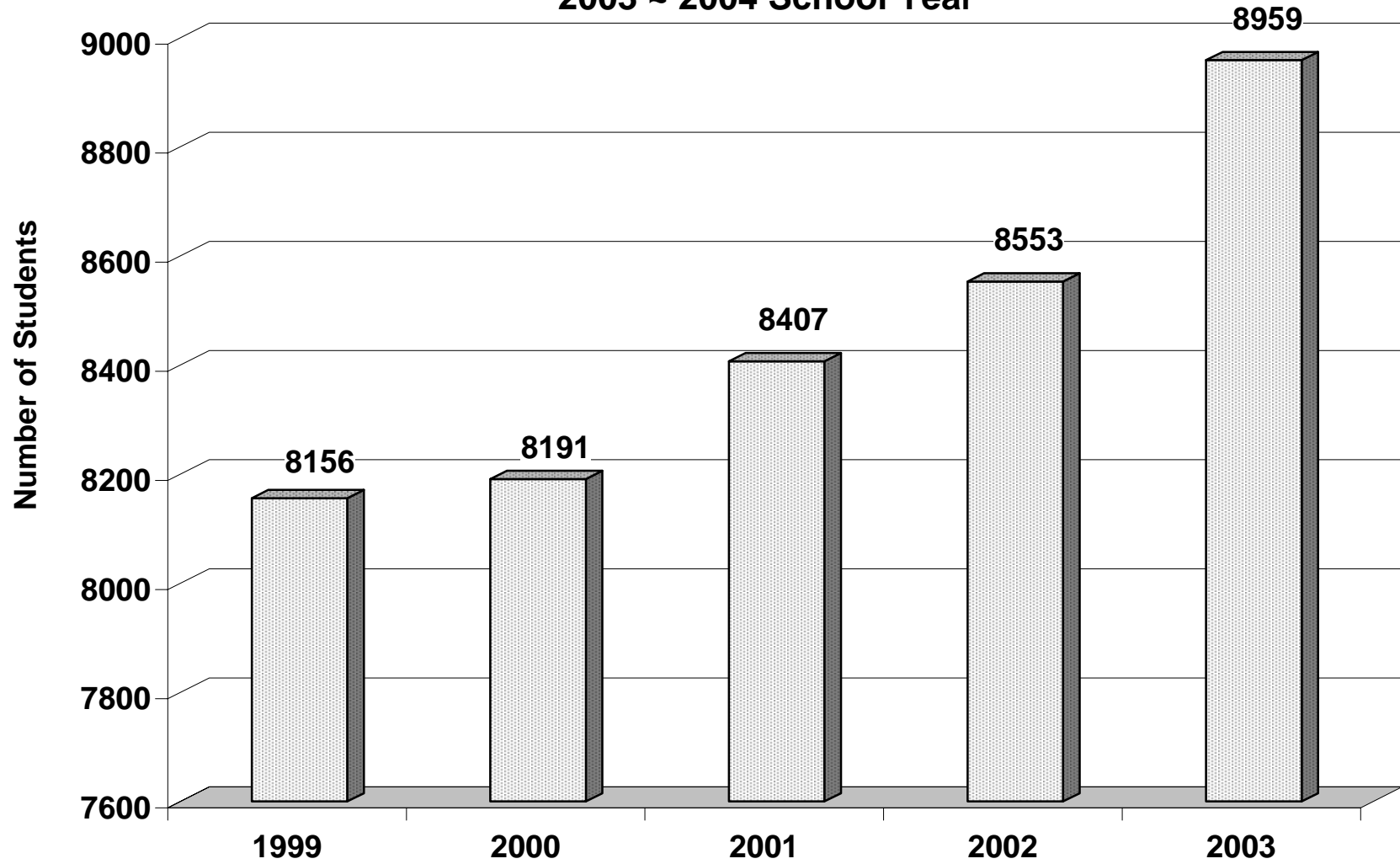
**WILLIAMSBURG-JAMES CITY COUNTY PUBLIC SCHOOLS
2003~ 2004 Fall Membership**

		9/30/2002 Actual	9/30/2003 Projected	9/30/2003 Official	% of Free/ Reduced Lunch	Change from 9/30/2002
Baker		687	688	722	21.19%	35
Byrd		496	476	482	19.92%	(14)
James River		372	363	387	55.04%	15
Montague		612	626	689	19.16%	77
Norge		625	627	642	25.23%	17
Stonehouse		502	512	525	18.67%	23
Whaley		498	492	497	23.94%	(1)
Subtotal: Elementary		3,792	3,784	3,944	24.67%	152
Berkeley		749	758	816	15.69%	67
Blair		580	575	607	23.72%	27
Toano		758	796	783	19.03%	25
Subtotal: Middle		2,087	2,129	2,206	19.08%	119
Jamestown		1,256	1,288	1,331	*	75
Lafayette		1,418	1,452	1,478	*	60
Subtotal: High School		2,674	2,740	2,809		135
Total~Division		8,553	8,653	8,959		406
Grade Level:	K	575	562	605		30
	1	552	599	603		51
	2	639	562	623		(16)
	3	695	678	692		(3)
	4	644	722	730		86
	5	687	661	691		4
	6	683	683	708		25
	7	726	699	756		30
	8	678	747	742		64
	9	768	810	807		39
	10	703	708	742		39
	11	629	636	636		7
	12	574	586	624		50
Total		8,553	8,653	8,959		406

* Jamestown and Lafayette have chosen not to participate in the federal free and reduced lunch program and have instead instituted their own subsidized food program for students who would otherwise qualify for federal meal subsidies.

Growth in Total Enrollment by Year

2003 ~ 2004 School Year



WILLIAMSBURG-JAMES CITY COUNTY PUBLIC SCHOOLS

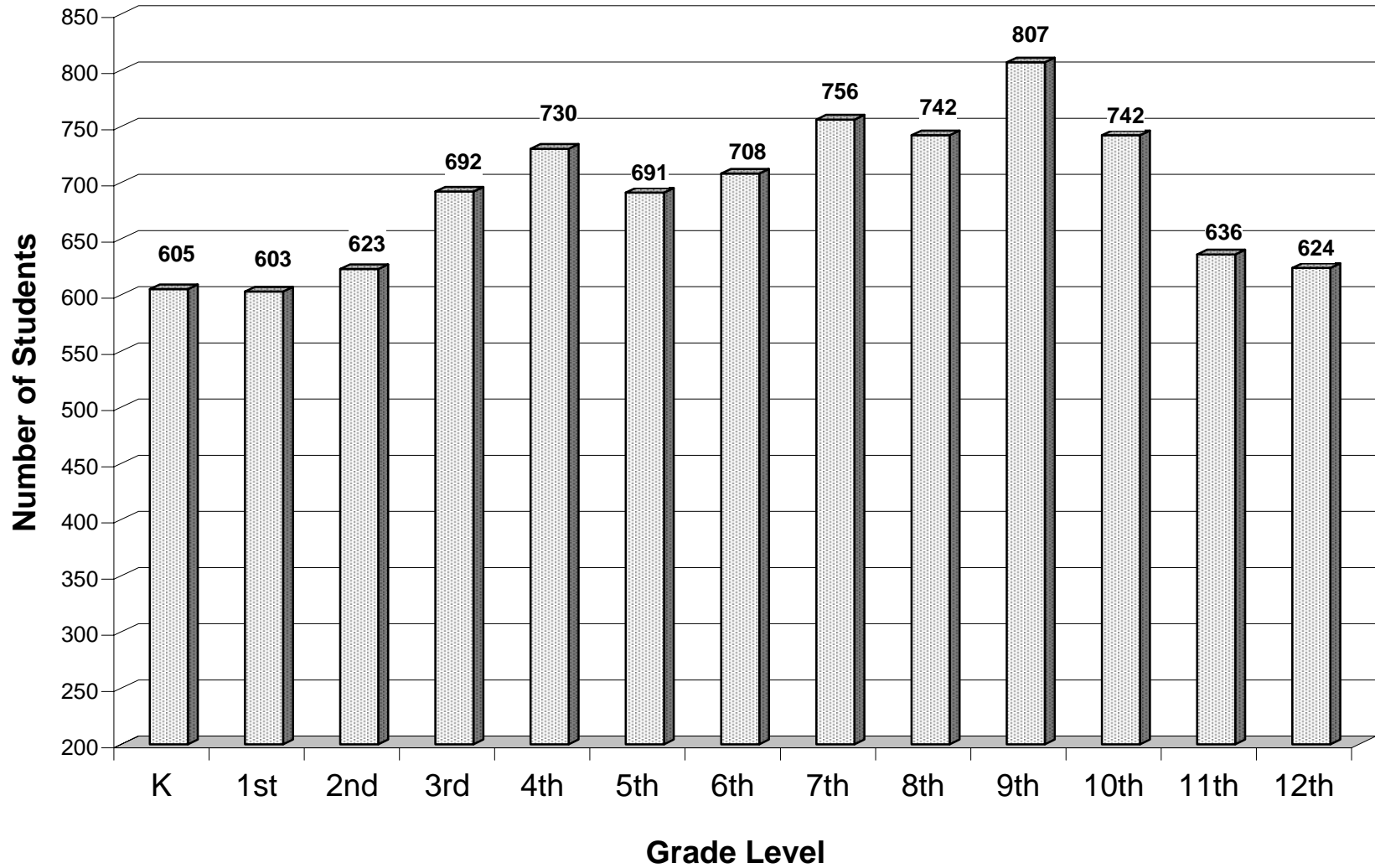
2003 ~ 2004 Student Enrollment

Total Enrollment by Grade

	K	1	2	3	4	5	6	7	8	9	10	11	12	FY03-04	FY02-03	
														Grand Total	Actual	Change
Baker	109	114	119	128	106	146								722	687	35
Byrd	67	71	76	83	102	83								482	496	(14)
James River	58	65	58	74	73	59								387	372	15
Montague	121	106	114	103	133	112								689	612	77
Norge	90	89	111	117	120	115								642	625	17
Stonehouse	85	79	68	99	98	96								525	502	23
Whaley	75	79	77	88	98	80								497	498	(1)
Subtotal: Elementary	605	603	623	692	730	691								3,944	3,792	152
Berkeley							272	274	270					816	749	67
Blair							185	211	211					607	580	27
Toano							251	271	261					783	758	25
Subtotal: Middle School							708	756	742					2,206	2,087	119
Jamestown										404	358	298	271	1,331	1,256	75
Lafayette										403	384	338	353	1,478	1,418	60
Subtotal: High School										807	742	636	624	2,809	2,674	135
Total~Division	605	603	623	692	730	691	708	756	742	807	742	636	624	8,959	8,553	406

Enrollment by Grade

2003~2004 School Year



WILLIAMSBURG-JAMES CITY COUNTY PUBLIC SCHOOLS

Growth in Enrollment by School

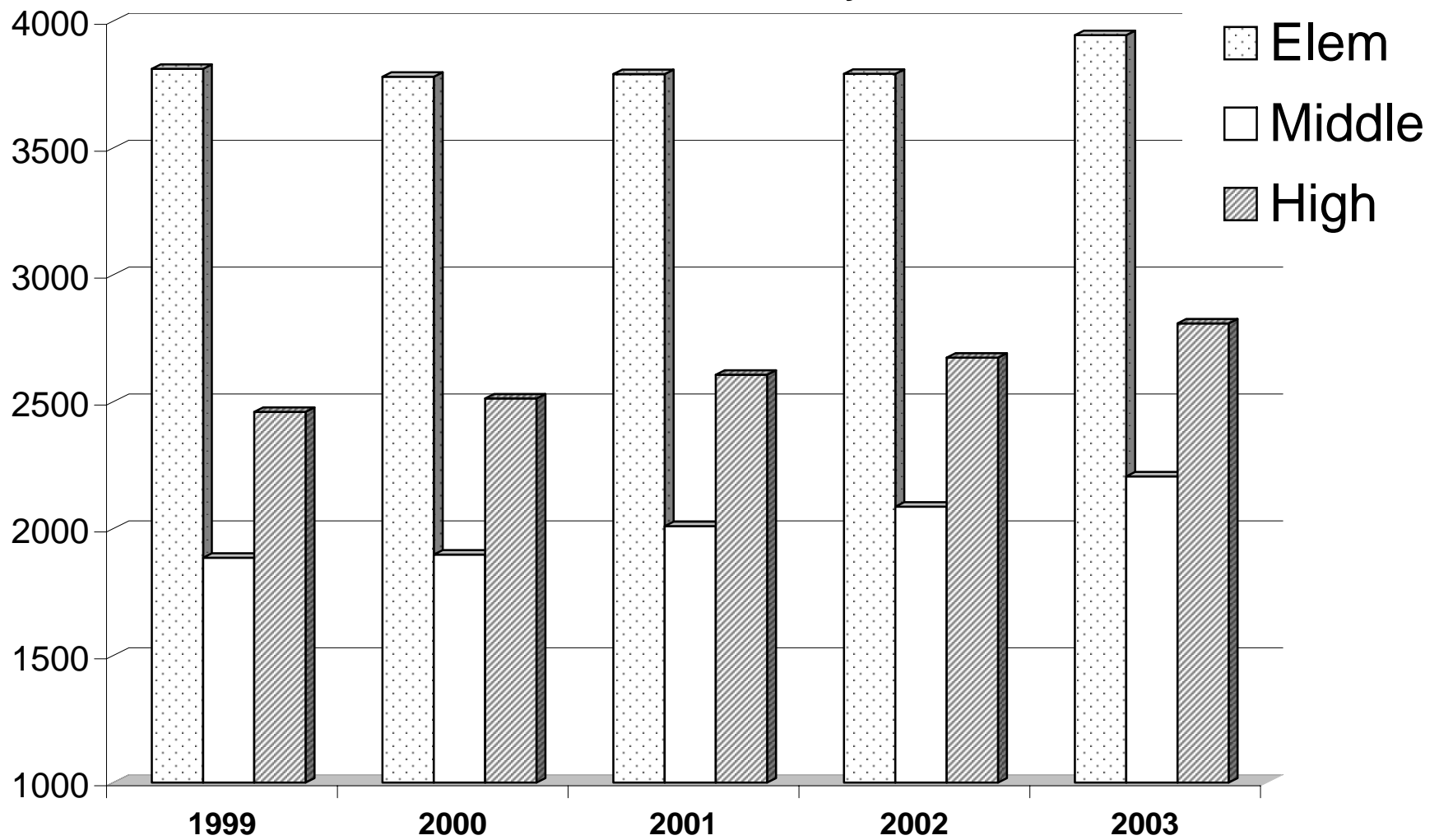
from 9-30-1999 to 9-30-2003

	Actual 9/30/1999	Actual 9/30/2000	Actual 9/30/2001	Actual 9/30/2002	Actual 9/30/2003	From 2002 to 2003		3-Year Net Gain
						Gain/(Loss)	Percent	
<u>I. Elementary</u>								
Baker	859	687	673	687	722	35	5.09%	35
Byrd	540	537	526	496	482	(14)	-2.82%	(55)
James River	487	463	398	372	387	15	4.03%	(76)
Montague	791	567	591	612	689	77	12.58%	122
Norge	664	590	645	625	642	17	2.72%	52
Stonehouse*	-	493	493	502	525	23	4.58%	32
Whaley	470	443	465	498	497	(1)	-0.20%	54
SubTotal: Elementary	3,811	3,780	3,791	3,792	3,944	152	4.01%	164
<u>II. Middle School</u>								
Berkeley	637	675	720	749	816	67	8.95%	141
Blair	502	504	533	580	607	27	4.66%	103
Toano	746	719	757	758	783	25	3.30%	64
SubTotal: Middle	1,885	1,898	2,010	2,087	2,206	119	5.70%	308
<u>III. High School</u>								
Jamestown	1,168	1,162	1,215	1,256	1,331	75	5.97%	169
Lafayette	1,292	1,351	1,391	1,418	1,478	60	4.23%	127
SubTotal: High	2,460	2,513	2,606	2,674	2,809	135	5.05%	296
Total~Regular Ed	8,156	8,191	8,407	8,553	8,959	406	4.75%	768
Self-Contained Special Ed	-	-	-	-	-	-		-
Total~Enrollment	8,156	8,191	8,407	8,553	8,959	406	4.75%	768

* Note: Stonehouse Elementary opened for the 2000-2001 school year

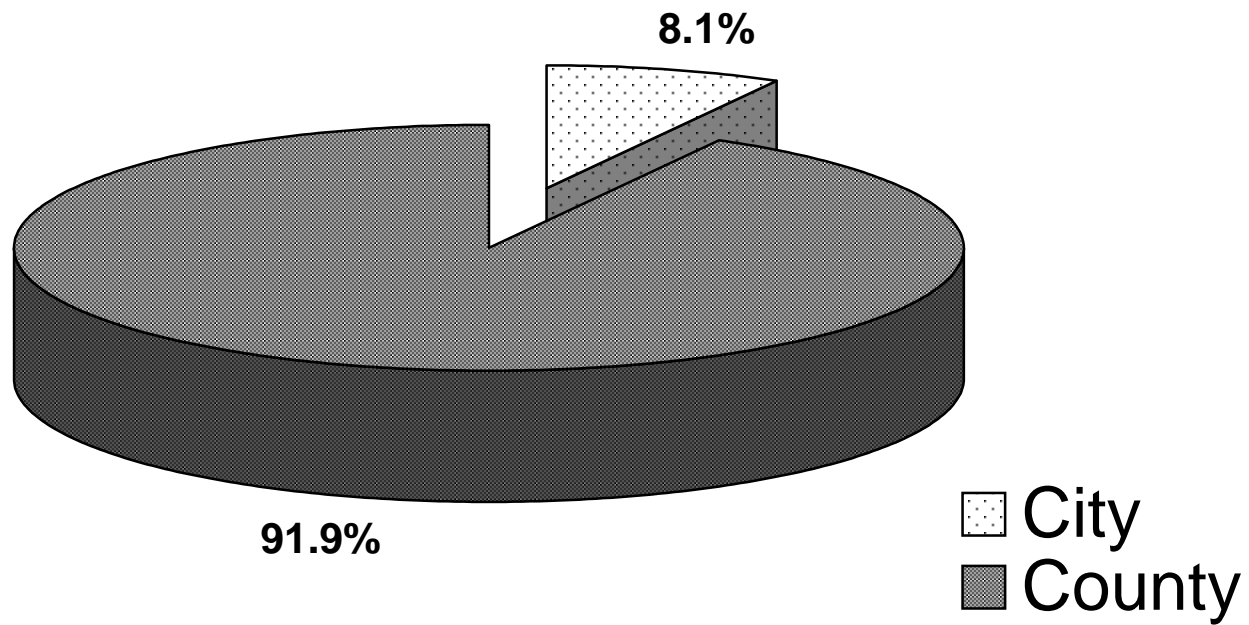
Growth in Total Enrollment

Five Year History



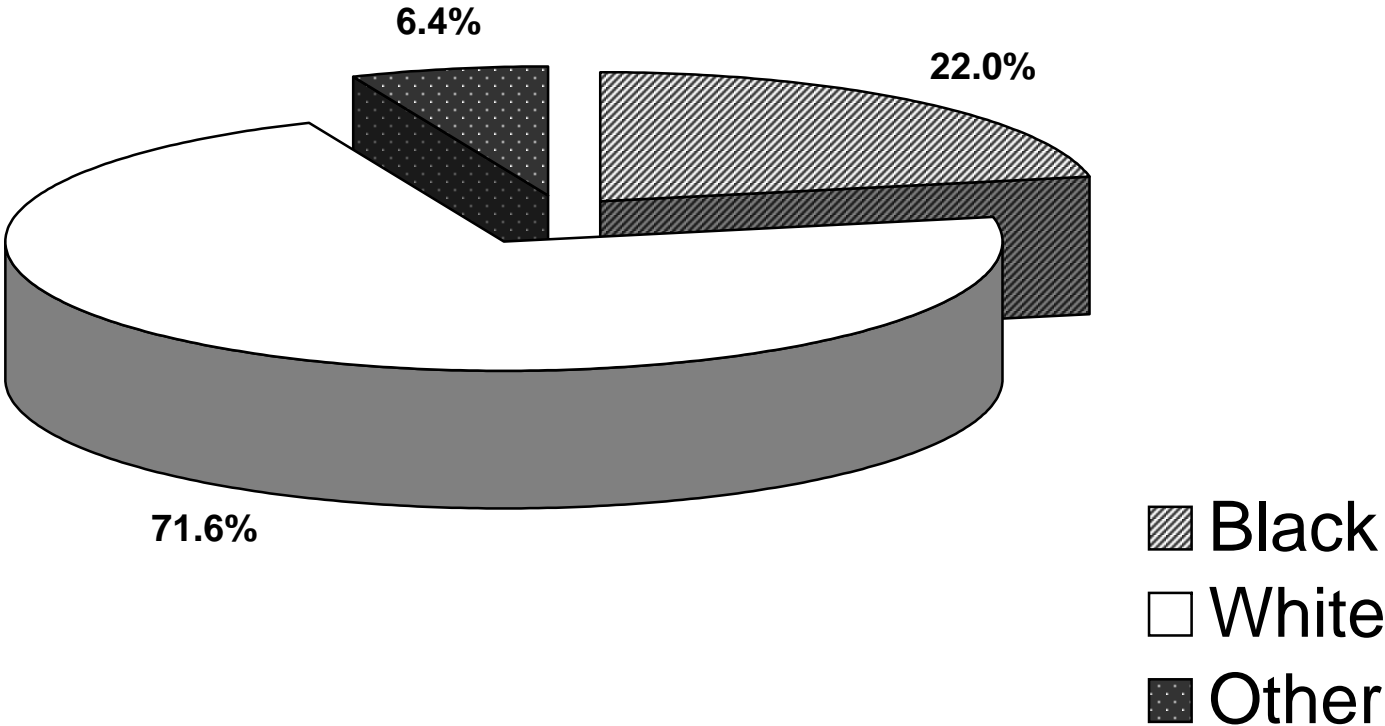
Enrollment by Jurisdiction

2003 ~ 2004 School Year



Enrollment by Ethnicity

2003 ~ 2004 School Year



WILLIAMSBURG-JAMES CITY COUNTY PUBLIC SCHOOLS
 September 30th Enrollment 2003~2004 School Year

	City of Williamsburg		County of James City		Total	Black		White		Other	
Baker	32	4.4%	690	95.6%	722	143	19.8%	536	74.2%	43	6.0%
Byrd	18	3.7%	464	96.3%	482	81	16.8%	373	77.4%	28	5.8%
James River	-	0.0%	387	100.0%	387	162	41.9%	196	50.6%	29	7.5%
Montague	5	0.7%	684	99.3%	689	130	18.9%	519	75.3%	40	5.8%
Norge	12	1.9%	630	98.1%	642	135	21.0%	460	71.7%	47	7.3%
Stonehouse	1	0.2%	524	99.8%	525	81	15.4%	411	78.3%	33	6.3%
Whaley	266	53.5%	231	46.5%	497	135	27.2%	311	62.6%	51	10.3%
Elementary	334	8.5%	3,610	91.5%	3,944	867	22.0%	2,806	71.1%	271	6.9%
Berkeley	151	18.5%	665	81.5%	816	164	20.1%	598	73.3%	54	6.6%
Blair	28	4.6%	579	95.4%	607	183	30.1%	376	61.9%	48	7.9%
Toano	8	1.0%	775	99.0%	783	175	22.3%	575	73.4%	33	4.2%
Middle	187	8.5%	2,019	91.5%	2,206	522	23.7%	1,549	70.2%	135	6.1%
Jamestown	175	13.1%	1,156	86.9%	1,331	296	22.2%	945	71.0%	90	6.8%
Lafayette	32	2.2%	1,446	97.8%	1,478	285	19.3%	1,115	75.4%	78	5.3%
High	207	7.4%	2,602	92.6%	2,809	581	20.7%	2,060	73.3%	168	6.0%
Total~Division	728	8.1%	8,231	91.9%	8,959	1,970	22.0%	6,415	71.6%	574	6.4%
Grade: K	51	8.4%	554	91.6%	605	129	21.3%	435	71.9%	41	6.8%
1	56	9.3%	547	90.7%	603	137	22.7%	413	68.5%	53	8.8%
2	52	8.3%	571	91.7%	623	134	21.5%	446	71.6%	43	6.9%
3	52	7.5%	640	92.5%	692	151	21.8%	493	71.2%	48	6.9%
4	71	9.7%	659	90.3%	730	173	23.7%	518	71.0%	39	5.3%
5	52	7.5%	639	92.5%	691	143	20.7%	501	72.5%	47	6.8%
6	57	8.1%	651	91.9%	708	176	24.9%	495	69.9%	37	5.2%
7	71	9.4%	685	90.6%	756	191	25.3%	518	68.5%	47	6.2%
8	59	8.0%	683	92.0%	742	155	20.9%	536	72.2%	51	6.9%
9	69	8.6%	738	91.4%	807	187	23.2%	564	69.9%	56	6.9%
10	53	7.1%	689	92.9%	742	155	20.9%	547	73.7%	40	5.4%
11	39	6.1%	597	93.9%	636	124	19.5%	471	74.1%	41	6.4%
12	46	7.4%	578	92.6%	624	115	18.4%	478	76.6%	31	5.0%
Total	728	8.1%	8,231	91.9%	8,959	1,970	22.0%	6,415	71.6%	574	6.4%

School: Clara Byrd Baker Elementary

Grade	City of Williamsburg								James City County								Totals		
	Male				Female				Male				Female				City	County	Total
	Black	White	Other	Total	Black	White	Other	Total	Black	White	Other	Total	Black	White	Other	Total			
K	5	0		5	0	0		0	12	42	1	55	6	41	2	49	5	104	109
1	3	1		4	2	1	1	4	3	44	4	51	14	37	4	55	8	106	114
2	4	1		5	2	0		2	13	43	1	57	9	43	3	55	7	112	119
3	1	1		2	1	0		1	12	48	6	66	9	46	4	59	3	125	128
4	2	1		3	2	1		3	7	37	5	49	10	39	2	51	6	100	106
5	1	0		1	2	0		2	9	58	2	69	14	52	8	74	3	143	146
TOTAL	16	4	0	20	9	2	1	12	56	272	19	347	62	258	23	343	32	690	722

**Clara Byrd Baker Elementary
Enrollment Data as of September 30, 2003**

GRADE LEVEL	TOTALS		AVERAGE SIZE	ACTUAL ENROLLMENT IN EACH SECTION	CHANGE FROM 2002	
	STUDENTS	SECTIONS			AVERAGE ON 9/30/02	DIFFERENCE
KINDERGARTEN	109	5	21.8	21-22-22-22-22	20.8	1.0
GRADE 1	113	6	18.8	18-18-19-19-19-20	19.6	-0.8
GRADE 2	119	6	19.8	19-19-20-20-20-21	19.3	0.5
GRADE 3	128	5	25.6	25-25-26-26-26	20.4	5.2
GRADE 4	106	5	21.2	20-21-21-22-22	22.0	-0.8
GRADE 5	146	6	24.3	23-24-24-25-25-25	22.5	1.8
SPECIAL EDUCATION	1	0	0.0	1*	0	0.0
Sub-Total K-5 ONLY	721	33	21.8		20.8	1.0
TOTAL	722	33	21.9		20.8	1.1

*Student enrolled at New Horizons

School: Rawls Byrd Elementary

Grade	City of Williamsburg								James City County								Totals		
	Male				Female				Male				Female				City	County	Total
	Black	White	Other	Total	Black	White	Other	Total	Black	White	Other	Total	Black	White	Other	Total			
K	0	0	0	0	0	2	0	2	4	24	1	29	5	29	2	36	2	65	67
1	2	0	0	2	0	1	2	3	6	25	3	34	5	22	5	32	5	66	71
2	0	0	0	0	1	2	0	3	6	29	1	36	7	29	1	37	3	73	76
3	1	0	0	1	3	0	0	3	8	23	4	35	8	36	0	44	4	79	83
4	0	0	0	0	1	0	0	1	8	51	0	59	7	35	0	42	1	101	102
5	0	0	0	0	0	2	1	3	4	31	6	41	5	32	2	39	3	80	83
TOTAL	3	0	0	3	5	7	3	15	36	183	15	234	37	183	10	230	18	464	482

**Rawls Byrd Elementary
Enrollment Data as of September 30, 2003**

GRADE LEVEL	TOTALS		AVERAGE SIZE	ACTUAL ENROLLMENT IN EACH SECTION	CHANGE FROM 2002	
	STUDENTS	SECTIONS			AVERAGE ON 9/30/02	DIFFERENCE
KINDERGARTEN	67	4	16.8	16-18-17-16	17.3	-0.5
GRADE 1	71	4	17.8	19-17-17-18	17.0	0.8
GRADE 2	76	4	19.0	20-19-18-19	20.5	-1.5
GRADE 3	80	4	20.0	21-20-20-19	20.2	-0.2
GRADE 4	102	4	25.5	23-26-27-26	20.0	5.5
GRADE 5	81	4	20.3	19-22-21-19	22.8	-2.5
SPECIAL EDUCATION	5	1	5.0	5	5	0.0
Sub-Total K-5 ONLY	477	24	19.9		19.6	0.3
TOTAL	482	25	19.3		17.5	1.8

School: James River Elementary

Grade	City of Williamsburg								James City County								Totals		
	Male				Female				Male				Female				City	County	Total
	Black	White	Other	Total	Black	White	Other	Total	Black	White	Other	Total	Black	White	Other	Total			
K	0	0	0	0	0	0	0	0	14	11	2	27	14	14	3	31	0	58	58
1	0	0	0	0	0	0	0	0	9	15	3	27	12	21	5	38	0	65	65
2	0	0	0	0	0	0	0	0	10	16	4	30	11	17	0	28	0	58	58
3	0	0	0	0	0	0	0	0	24	17	1	42	12	17	3	32	0	74	74
4	0	0	0	0	0	0	0	0	14	22	1	37	21	12	3	36	0	73	73
5	0	0	0	0	0	0	0	0	13	13	1	27	8	21	3	32	0	59	59
TOTAL	0	0	0	0	0	0	0	0	84	94	12	190	78	102	17	197	0	387	387

**James River Elementary
Enrollment Data as of September 30, 2003**

GRADE LEVEL	TOTALS		AVERAGE SIZE	ACTUAL ENROLLMENT IN EACH SECTION	CHANGE FROM 2002	
	STUDENTS	SECTIONS			AVERAGE ON 9/30/02	DIFFERENCE
KINDERGARTEN	58	3	19.3	19-20-18	16.0	3.3
GRADE 1	65	4	16.3	16-16-17-16	16.0	0.3
GRADE 2	58	3	19.3	18-21-19	19.0	0.3
GRADE 3	74	3	24.7	25-25-24	16.5	8.2
GRADE 4	73	3	24.3	25-25-22	19.7	4.6
GRADE 5	59	3	19.7	21-17-21	19.7	0.0
SPECIAL EDUCATION			0.0	included in regular classes		0.0
Sub-Total K-5 ONLY	387	19	20.4		17.8	2.6
TOTAL	387	19	20.4		17.8	2.6

School: D. J. Montague Elementary

Grade	City of Williamsburg								James City County								Totals		
	Male				Female				Male				Female				City	County	Total
	Black	White	Other	Total	Black	White	Other	Total	Black	White	Other	Total	Black	White	Other	Total			
K	0	0	0	0	0	0	0	0	8	55	2	65	14	37	5	56	0	121	121
1	0	0	0	0	0	0	0	0	11	41	4	56	14	36	0	50	0	106	106
2	0	0	0	0	0	0	0	0	14	42	6	62	11	37	4	52	0	114	114
3	0	1	0	1	0	0	0	0	5	53	3	61	9	31	1	41	1	102	103
4	0	1	0	1	0	0	0	0	14	52	4	70	10	48	4	62	1	132	133
5	1	0	0	1	1	1	0	2	14	41	4	59	4	43	3	50	3	109	112
TOTAL	1	2	0	3	1	1	0	2	66	284	23	373	62	232	17	311	5	684	689

**D. J. Montague Elementary
Enrollment Data as of September 30, 2003**

GRADE LEVEL	TOTALS		AVERAGE SIZE	ACTUAL ENROLLMENT IN EACH SECTION	CHANGE FROM 2002	
	STUDENTS	SECTIONS			AVERAGE ON 9/30/02	DIFFERENCE
KINDERGARTEN	121	6	20.2	20-20-21-20-19-21	17.8	2.4
GRADE 1	104	5	20.8	21-21-21-20-21	19.2	1.6
GRADE 2	113	5	22.6	23-22-23-22-23	22.8	-0.2
GRADE 3	101	4	25.3	25-25-25-26	20.3	5.0
GRADE 4	131	6	21.8	23-22-22-20-21-23	21.8	0.0
GRADE 5	106	5	21.2	26-26-27-27-*	23.6	-2.4
SPECIAL EDUCATION	13	2	6.5	8-4-***1	4.5	2.0
Sub-Total K-5 ONLY	676	31	21.8		20.8	1.0
TOTAL	689	33	20.9		19.7	1.2

* Four classes-5 teachers

** One student at New Horizons

School: Norge Elementary

Grade	City of Williamsburg								James City County								Totals		
	Male				Female				Male				Female				City	County	Total
	Black	White	Other	Total	Black	White	Other	Total	Black	White	Other	Total	Black	White	Other	Total			
K	0	0	0	0	0	0	1	1	8	40	2	50	10	23	6	39	1	89	90
1	0	1	0	1	0	1	0	1	6	35	3	44	7	33	3	43	2	87	89
2	0	1	0	1	1	0	0	1	5	44	1	50	13	39	7	59	2	109	111
3	0	0	0	0	1	1	1	3	11	47	3	61	11	38	4	53	3	114	117
4	1	2	0	3	0	1	0	1	11	36	6	53	19	42	2	63	4	116	120
5	0	0	0	0	0	0	0	0	13	44	6	63	18	32	2	52	0	115	115
TOTAL	1	4	0	5	2	3	2	7	54	246	21	321	78	207	24	309	12	630	642

**Norge Elementary
Enrollment Data as of September 30, 2003**

GRADE LEVEL	TOTALS		AVERAGE SIZE	ACTUAL ENROLLMENT IN EACH SECTION	CHANGE FROM 2002	
	STUDENTS	SECTIONS			AVERAGE ON 9/30/02	DIFFERENCE
KINDERGARTEN	88	5	17.6	18-19-18-18-15	17.6	0.0
GRADE 1	86	5	17.2	17-18-15-18-18	16.8	0.4
GRADE 2	105	5	21.0	22-22-18-21-22	19.8	1.2
GRADE 3	116	5	23.2	23-20-25-24-24	21.8	1.4
GRADE 4	114	5	22.8	22-23-23-23-23	20.6	2.2
GRADE 5	112	5	22.4	20-23-23-23-23	20.4	2.0
SPECIAL EDUCATION	21	3	7.0	10-6-5	7.7	-0.7
Sub-Total K-5 ONLY	621	30	20.7		19.4	1.3
TOTAL	642	33	19.5		18.4	1.1

School: Stonehouse Elementary

Grade	City of Williamsburg								James City County								Totals		
	Male				Female				Male				Female				City	County	Total
	Black	White	Other	Total	Black	White	Other	Total	Black	White	Other	Total	Black	White	Other	Total			
K	0	0	0	0	0	0	0	0	6	35	5	46	7	29	3	39	0	85	85
1	0	0	0	0	0	0	0	0	9	23	4	36	7	32	4	43	0	79	79
2	0	0	0	0	0	0	0	0	4	32	0	36	2	27	3	32	0	68	68
3	0	0	0	0	0	0	0	0	4	44	3	51	13	31	4	48	0	99	99
4	1	0	0	1	0	0	0	0	6	48	2	56	6	34	1	41	1	97	98
5	0	0	0	0	0	0	0	0	12	34	2	48	4	42	2	48	0	96	96
TOTAL	1	0	0	1	0	0	0	0	41	216	16	273	39	195	17	251	1	524	525

**Stonehouse Elementary
Enrollment Data as of September 30, 2003**

GRADE LEVEL	TOTALS		AVERAGE SIZE	ACTUAL ENROLLMENT IN EACH SECTION	CHANGE FROM 2002	
	STUDENTS	SECTIONS			AVERAGE ON 9/30/02	DIFFERENCE
KINDERGARTEN	85	5	17.0	17-17-17-16-18	19.3	-2.3
GRADE 1	79	4	19.8	19-20-18-22	16.8	3.0
GRADE 2	68	4	17.0	16-17-17-18	18.6	-1.6
GRADE 3	99	4	24.8	25-25-25-24	24.3	0.5
GRADE 4	98	4	24.5	26-23-26-23	22.3	2.2
GRADE 5	96	4	24.0	22-23-25-26	19.8	4.2
SPECIAL EDUCATION			0.0	included in regular classes		0.0
Sub-Total K-5 ONLY	525	25	21.0		20.1	0.9
TOTAL	525	25	21.0		20.1	0.9

School: Matthew Whaley Elementary

Grade	City of Williamsburg								James City County								Totals		
	Male				Female				Male				Female				City	County	Total
	Black	White	Other	Total	Black	White	Other	Total	Black	White	Other	Total	Black	White	Other	Total			
K	7	7	3	17	5	19	2	26	0	14	0	14	4	13	1	18	43	32	75
1	9	10	3	22	10	7	2	19	2	18	1	21	6	9	2	17	41	38	79
2	6	4	6	16	10	12	2	24	4	13	2	19	1	15	2	18	40	37	77
3	10	13	2	25	4	9	3	16	2	21	5	28	2	16	1	19	41	47	88
4	14	15	4	33	13	8	4	25	3	16	1	20	3	17	0	20	58	40	98
5	3	12	3	18	10	14	1	25	3	15	1	19	4	14	0	18	43	37	80
TOTAL	49	61	21	131	52	69	14	135	14	97	10	121	20	84	6	110	266	231	497

**Matthew Whaley Elementary
Enrollment Data as of September 30, 2003**

GRADE LEVEL	TOTALS		AVERAGE SIZE	ACTUAL ENROLLMENT IN EACH SECTION	CHANGE FROM 2002	
	STUDENTS	SECTIONS			AVERAGE ON 9/30/02	DIFFERENCE
KINDERGARTEN	75	4	18.8	20-18-18-19	19.5	-0.7
GRADE 1	79	4	19.8	20-20-21-18	17.3	2.5
GRADE 2	77	4	19.3	19-21-18-19	19.8	-0.5
GRADE 3	88	4	22.0	23-22-21-22	22.3	-0.3
GRADE 4	98	4	24.5	25-25-23-25	21.8	2.7
GRADE 5	80	4	20.0	20-20-21-19	24.0	-4.0
SPECIAL EDUCATION			0.0	*special education is included with grade levels		0.0
Sub-Total K-5 ONLY	497	24	20.7		20.8	-0.1
TOTAL	497	24	20.7		20.8	-0.1

School: Berkeley Middle School

Grade	City of Williamsburg								James City County								Totals		
	Male				Female				Male				Female				City	County	Total
	Black	White	Other	Total	Black	White	Other	Total	Black	White	Other	Total	Black	White	Other	Total			
6	13	10	1	24	12	9	2	23	8	99	3	110	16	92	7	115	47	225	272
7	9	14	3	26	16	10	3	29	20	76	8	104	14	94	7	115	55	219	274
8	16	8	1	25	14	6	4	24	10	84	8	102	16	96	7	119	49	221	270
TOTAL	38	32	5	75	42	25	9	76	38	259	19	316	46	282	21	349	151	665	816

**Berkeley Middle School
Enrollment Data as of September 30, 2003**

GRADE LEVEL	TOTALS		AVERAGE SIZE	ACTUAL ENROLLMENT IN EACH SECTION	CHANGE FROM 2002	
	STUDENTS	SECTIONS			AVERAGE ON 9/30/02	DIFFERENCE
GRADE 6	272	11	24.7	24-26-25-25-25-26-25-24-25-25-22	23.8	0.9
GRADE 7	274	11	24.9	24-25-25-26-25-25-23-25-24-26-26	24.0	0.9
GRADE 8	270	11	24.5	25-25-25-24-26-22-25-23-25-25-21	24.7	-0.2
SPECIAL EDUCATION			0.0	Special education included with grade level		0.0
Sub-Total 6-8 ONLY	816	33	24.7		24.2	0.5
TOTAL	816	33	24.7		24.2	0.5

GRADE LEVEL	TOTALS		AVERAGE SIZE	ACTUAL ENROLLMENT IN EACH SECTION	AVERAGE ON 9/30/02	DIFFERENCE
	STUDENTS	SECTIONS				
CHOIR	197	6	32.8	42-30-27-27-42-29	32	0.8
ART	151	6	25.2	29-26-25-27-20-24	22.5	2.7
COMPUTER	102	5	20.4	24-25-25-24-4	23.3	-2.9
MUSIC	74	5	14.8	15-11-21-21-6	16.5	-1.7
TECH 2000	142	6	23.7	23-27-22-25-24-21	21.7	2.0
WORK & FAMILY STUDIES	131	6	21.8	24-25-23-23-17-19	22	-0.2
BAND	178	5	35.6	47-46-49-13-23	34	1.6
FOREIGN LANGUAGE (Grade 6)	544	32	17.0	30-32-32-30-35-33-35-46-29-31-32-30-33-36-35-45 (split between 2 classes)	14.3	2.7
LATIN	36	2	18.0	18-18	20	-2.0
FRENCH	28	2	14.0	13-15	19.5	-5.5
GERMAN	31	2	15.5	16-15	14.5	1.0
SPANISH	95	3	31.7	29-32-34	20.4	11.3
HEALTH/PE	810	30	27.0	26-23-29-20-26-27-30-29-27-25-29-25-25-26-30-28-30-28-30-25-28-28-29-22-25-27-27-29-25-32	24.6	2.4
DRAMA	100	6	16.7	18-24-15-8-16-19	14.8	1.9

School: James Blair Middle School

Grade	City of Williamsburg								James City County								Totals		
	Male				Female				Male				Female				City	County	Total
	Black	White	Other	Total	Black	White	Other	Total	Black	White	Other	Total	Black	White	Other	Total			
6	3	3	1	7	0	2	0	2	26	45	1	72	40	56	8	104	9	176	185
7	0	6	0	6	0	5	0	5	40	53	13	106	20	70	4	94	11	200	211
8	1	3	3	7	0	1	0	1	26	57	8	91	27	75	10	112	8	203	211
TOTAL	4	12	4	20	0	8	0	8	92	155	22	269	87	201	22	310	28	579	607

**James Blair Middle School
Enrollment Data as of September 30, 2003**

GRADE LEVEL	TOTALS		AVERAGE SIZE	ACTUAL ENROLLMENT IN EACH SECTION	CHANGE FROM 2002	
	STUDENTS	SECTIONS			AVERAGE ON 9/30/02	DIFFERENCE
GRADE 6	185	8	23.1	25-23-23-23-23-21-22-25	24.0	-0.9
GRADE 7	205	8	25.6	26-25-25-25-26-26-26-26	25.5	0.1
GRADE 8	211	8	26.4	27-27-26-27-27-27-25-25	21.5	4.9
SPECIAL EDUCATION	6		0.0			0.0
Sub-Total 6-8 ONLY	601	24	25.0		23.7	1.3
TOTAL	607	24	25.3		23.7	1.6

GRADE LEVEL	TOTALS		AVERAGE SIZE	ACTUAL ENROLLMENT IN EACH SECTION	CHANGE FROM 2001	
	STUDENTS	SECTIONS			AVERAGE ON 9/30/01	DIFFERENCE
CHOIR	46	3	15.3	19-12-15	16.3	-1.0
ART	347	15	23.1	22-21-22-20-21-19-26-24-30-27-25-26-22-24-18	16.9	6.2
COMPUTER	288	14	20.6	19-26-20-32-20-23-20-22-21-15-18-11-21-20	21.6	-1.0
MUSIC	145	10	14.5	12-11-20-19-17-19-14-14-9-10	20.5	-6.0
TECH 2000	238	15	15.9	18-18-20-19-17-17-20-14-20-15-17-17-20-18-20	16.9	-1.0
WORK & FAMILY STUDIES	252	16	15.8	15-20-14-19-11-16-11-17-17-13-13-11-19-18-18-20	15.1	0.7
BAND	149	7	21.3	13-41-43-7-28-11-6	14	7.3
FOR'GN LANGUAGE (Gr 6)	183	16	11.4	6-6-16-17-9-9-15-15-8-8-12-13-10-12-13-14	23.1	-11.7
LATIN	0	0			0	0.0
FRENCH	51	2	25.5	30-21	15.3	10.2
GERMAN	46	2	23.0	29-17	15.5	7.5
SPANISH	117	7	16.7	15-16-15-18-21-18-14	17.2	-0.5
HEALTH/PE	569	23	24.7	20-29-20-24-17-29-19-24-26-24-28-22-26-22-28-28-26-27-27-27-26-27-26-25	23.7	1.0
DRAMA	264	16	16.5	23-21-7-18-13-14-16-20-8-9-16-10-19-20-25-25	18.4	-1.9

School: Toano Middle School

Grade	City of Williamsburg								James City County								Totals		
	Male				Female				Male				Female				City	County	Total
	Black	White	Other	Total	Black	White	Other	Total	Black	White	Other	Total	Black	White	Other	Total			
6	0	0	0	0	0	1	0	1	36	93	10	139	22	85	4	111	1	250	251
7	3	1	0	4	1	0	0	1	26	104	5	135	42	85	4	131	5	266	271
8	0	0	0	0	2	0	0	2	20	107	4	131	23	99	6	128	2	259	261
TOTAL	3	1	0	4	3	1	0	4	82	304	19	405	87	269	14	370	8	775	783

**Toano Middle School
Enrollment Data as of September 30, 2003**

GRADE LEVEL	TOTALS		AVERAGE SIZE	ACTUAL ENROLLMENT IN EACH SECTION	CHANGE FROM 2002	
	STUDENTS	SECTIONS			AVERAGE ON 9/30/02	DIFFERENCE
GRADE 6	251	10	25.1	26-24-25-27-24-24-25-27-24-25	25.4	-0.3
GRADE 7	271	11	24.6	24-25-24-24-25-24-25-25-25-24-26	22.7	1.9
GRADE 8	261	11	23.7	24-23-22-25-23-24-22-24-25-24-25	21.2	2.5
SPECIAL EDUCATION			0.0			0.0
Sub-Total 6-8 ONLY	783	32	24.5		23.1	1.4
TOTAL	783	32	24.5		23.1	1.4
GRADE LEVEL	TOTALS		AVERAGE SIZE	ACTUAL ENROLLMENT IN EACH SECTION	CHANGE FROM 2002	
STUDENTS	SECTIONS	AVERAGE ON 9/30/02			DIFFERENCE	
CHOIR	82	3	27.3	29-29-24	26	1.3
ART	381	16	23.8	28-28-15-16-25-24-20-21-26-26-23-25-27-29-24-24	23.7	0.1
COMPUTER	405	16	25.3	26-26-31-27-26-24-24-26-24-24-26-24-29-23-24-23	22.3	3.0
MUSIC	170	7	24.3	28-28-23-27-27-22-24-18	21.4	2.9
TECH 2000	363	16	22.7	29-27-22-17-20-19-22-25-28-23-16-21-18-25-23-28	23.7	-1.0
WORK & FAMILY STUDIES	253	16	15.8	24-24-21-29-12-16-23-26-28-24-15-17-18-26-27-22	23.1	-7.3
BAND	98	6	16.3	18-13-19-19-14-15	21	-4.7
FOR'GN LANGUAGE (Gr 6)	435	16	27.2	36-37-9-16-23-26-31-38-28-24-37-37-11-10-34-38	27.6	-0.4
LATIN	215	8	26.9	35-37-9-16-23-26-31-38	11.5	15.4
FRENCH	219	8	27.4	28-24-37-37-11-10-34-38	19	8.4
GERMAN	219	8	27.4	35-37-9-16-23-26-31-38	19	8.4
SPANISH	215	8	26.9	35-37-9-16-23-26-31-38	21.8	5.1
HEALTH/PE	775	30	25.8	23-23-23-26-28-29-23-24-26-25-25-27-24-24-29-29-26-28-27-28-15-29-23-27-25-29-27-29-27-27	25.1	0.7
DRAMA	365	16	22.8	20-22-31-24-21-26-19-16-27-21-19-22-22-29-22-24	23.6	-0.8

School: Jamestown High School

Grade	City of Williamsburg								James City County								Totals		
	Male				Female				Male				Female				City	County	Total
	Black	White	Other	Total	Black	White	Other	Total	Black	White	Other	Total	Black	White	Other	Total			
9	14	13	2	29	12	19	1	32	43	124	15	182	37	106	18	161	61	343	404
10	5	15	3	23	6	11	1	18	21	126	7	154	41	110	12	163	41	317	358
11	5	10	1	16	5	11	2	18	28	105	6	139	23	92	10	125	34	264	298
12	6	11	2	19	10	10	0	20	18	88	7	113	22	94	3	119	39	232	271
TOTAL	30	49	8	87	33	51	4	88	110	443	35	588	123	402	43	568	175	1156	1331

**Jamestown High School
Enrollment Data as of September 30, 2003**

GRADE LEVEL	TOTALS		AVERAGE SIZE	ACTUAL ENROLLMENT IN EACH SECTION	CHANGE FROM 2002	
	STUDENTS	SECTIONS			AVERAGE ON 9/30/02	DIFFERENCE
ENGLISH 9 (All)	380	20	19.0	13-23-20-21-20-18-24-24-25-8-20-23-20-17-23-14-14-19-17-17	18.9	0.1
ENGLISH 10 (All)	345	17	20.3	25-25-25-27-26-26-14-20-10-19-21-20-18-25-14-16-14	19.6	0.7
ENGLISH 11 (All)	108	5	21.6	22-27-22-22-15	19	2.6
ENGLISH 12 (All)	297	16	18.6	11-21-23-19-14-12-14-21-14-25-25-13-26-19-26-14	20.2	-1.6
JOURNALISM	25	1	25.0	25	26	-1.0
TOTAL ENGLISH	1155	59	19.6			
BASIC ALGEBRA	0	0	0.0	0	15.3	-15.3
ALGEBRA I	615	26	23.7	29-25-22-22-24-24-22-22-23-24-24-25-23-23-24-24-23-24-23-22-24-25-24-24-23-2-3 *same students all year	21	2.7
GEOMETRY	416	21	19.8	26-21-24-26-20-18-20-22-21-18-18-12-18-22-19-19-17-22-22-17-14* *same students all year	19.3	0.5
ALGEBRA II	305	13	23.5	30-28-24-27-30-25-25-24-26-19-19-14-14	19.9	3.6
ALGEBRA/TRIG	32	2	16.0	17-15	17.5	-1.5
TRIG FUNCTIONS	139	6	23.2	14-20-22-29-29-25	20.7	2.5
PRE-CALCULUS	106	5	21.2	11-22-23-24-26	20.2	1.0
CALCULUS (incl. AP)	63	4	15.8	13-15-20-15	12.3	3.5
COMP SCIENCE (incl. AP)	12	1	12.0	12	16	-4.0
PROB. & STATISTICS	40	2	20.0	18-22	17.5	2.5
TOTAL MATH	1728	80	21.6			
EARTH SCIENCE	361	16	22.6	20-23-24-27-23-28-23-13-25-21-24-25-21-21-23-20	21.7	0.9
BIOLOGY	347	15	23.1	13-27-29-28-27-24-25-24-11-25-24-26-16-24-24	19.7	3.4
BIOLOGY II (incl. AP)	83	4	20.8	24-14-19-26	21.5	-0.7
FIELD BIOLOGY	151	6	25.2	28-26-22-26-26-23 *Same students all year	22.2	3.0
BASIC PHY. SCIENCE	56	3	18.7	20-18-18	19	-0.3
CHEMISTRY (incl. AP)	219	11	19.9	27-17-25-13-13-24-23-24-15-25-13	23.4	-3.5
PHYSICS (incl. AP)	115	5	23.0	23-24-18-24-26	19.5	3.5
TOTAL SCIENCE	1332	60	22.2			
WORLD HISTORY	422	17	24.8	28-26-26-26-28-22-26-24-26-15-26-26-23-25-25-27-23	21	3.8
WORLD GEOGRAPHY	353	14	25.2	26-27-27-27-25-23-25-25-24-24-24-25-25-26	24.8	0.4
VA & US HISTORY (incl. AP)	116	5	23.2	22-22-27-22-23	23	0.2
AMERICAN STUDIES	476	12	39.7	43-35-36-38-38-44-35-41-37-39-49-41 *same students all year	34.9	4.8
GOVERNMENT (incl. AP)	278	12	23.2	26-28-27-22-26-27-26-21-22-18-16-19	24.5	-1.3
LAW & SOCIETY	14	1	14.0	14	23	-9.0
SOCIOLOGY	83	3	27.7	31-23-29	28	-0.3
US & WORLD AFFAIRS	16	1	16.0	16	0	16.0
TOTAL SOCIAL STUDIES	1758	65	27.0			

School: Lafayette High School

Grade	City of Williamsburg								James City County								Totals		
	Male				Female				Male				Female				City	County	Total
	Black	White	Other	Total	Black	White	Other	Total	Black	White	Other	Total	Black	White	Other	Total			
9	1	2	0	3	2	3	0	5	40	150	13	203	38	147	7	192	8	395	403
10	5	2	1	8	3	1	0	4	39	139	7	185	35	143	9	187	12	372	384
11	2	0	1	3	0	2	0	2	23	128	16	167	38	123	5	166	5	333	338
12	3	0	0	3	3	1	0	4	31	135	10	176	22	139	9	170	7	346	353
TOTAL	11	4	2	17	8	7	0	15	133	552	46	731	133	552	30	715	32	1446	1478

**Lafayette High School
Enrollment Data as of September 30, 2003**

GRADE LEVEL	TOTALS		AVERAGE SIZE	ACTUAL ENROLLMENT IN EACH SECTION	CHANGE FROM 2002	
	STUDENTS	SECTIONS			AVERAGE ON 9/30/02	DIFFERENCE
ENGLISH 9 (All)	387	19	20.4	13-21-24-25-25-23-20-25-24-25-18-19-16-19-20-17-19-14-20	20.3	0.1
ENGLISH 10 (All)	375	16	23.4	15-26-26-28-29-21-29-22*-9-23-23-25-27-27-24-21 (*full year course)	23.6	-0.2
ENGLISH 11 (All)	341	18	18.9	26-24-35*-44*-43*-26*-24*-26*-31*-35-27 (*full year interdisciplinary courses)	22	-3.1
ENGLISH 12 (All)	313	13	24.1	28-27-26-31-33-19-24-22-18-30-31-15-9	20.8	3.3
JOURNALISM	28	2	14.0	19-9	12	2.0
MASS MEDIA	29	1	29.0	29	27	
TOTAL ENGLISH	1473	69	21.3			21.3
BASIC ALGEBRA	41	4	10.3	12-12-6-11	9	1.3
ALGEBRA I	468	20	23.4	21-24-25-24-26-22-21-25-25-24-17-18-24-24-26-25-25-24-24-24	20.5	2.9
GEOMETRY	517	22	23.5	23-27-23-30-13-18-19-26-25-24-24-17-27-26-24-24-27-24-25-24-25-22	23.4	0.1
ALGEBRA II	199	9	22.1	29-27-29-30-19-21-14-11-19	20.9	1.2
ALGEBRA/TRIG	94	4	23.5	21-29-25-19	19.5	4.0
TRIG FUNCTIONS	141	5	28.2	28-30-29-27-27	23.5	4.7
PRE-CALCULUS	150	6	25.0	23-15-33-27-27-25	23.4	1.6
CALCULUS (incl. AP)	112	6	18.7	12-11-24-21-19-25	20	-1.3
COMP SCIENCE (incl. AP)	30	2	15.0	18-12	15	0.0
PROB. & STATISTICS	37	2	18.5	15-22	18	0.5
TOTAL MATH	1789	80	22.4			22.4
EARTH SCIENCE	380	15	25.3	23-25-27-26-28-30-29-13-21-20-25-24-30-30-29	22.2	3.1
BIOLOGY	346	14	24.7	24-25-24-26-25-29-29-17-24-21-25-26-25-26	21.9	2.8
BIOLOGY II (incl. AP)	212	9	23.6	27-26-14-27-18-26-20-27-27	23.5	0.1
FIELD BIOLOGY	87	4	21.8	19-25-21-22	22.8	
BASIC PHY. SCIENCE	60	3	20.0	23-19-18	17	3.0
CHEMISTRY (incl. AP)	272	12	22.7	22-26-26-22-26-12-14-21-25-26-23-29	22.1	0.6
PHYSICS (incl. AP)	55	3	18.3	15-25-15	18	0.3
TOTAL SCIENCE	1412	60	23.5			23.5
WORLD HISTORY	390	18	21.7	22-14-28-26-27-26-24-27-16*-14*-22-15-25-18-24-23-18-21 (full year courses)	22.6	-0.9
WORLD GEOGRAPHY	353	14	25.2	27-30-28-28-23-18-26-25-28-26-22-21-25-26	23.9	
VA & US HISTORY (incl. AP)	104	6	17.3	14-12-35*-27*-9-7 (*full year courses)	18.9	-1.6
AMERICAN STUDIES	229	14	16.4	35*-44*-43*-26*-24*-26*-31* (*full year interdisciplinary courses)	31.7	-15.3
GOVERNMENT (incl. AP)	339	14	24.2	29-26-31-27-26-23-25-28-21-18-12-28-20-25	20.8	3.4
LAW & SOCIETY	27	2	13.5	18-9	11.3	2.2
SOCIOLOGY	52	2	26.0	25-27	18.7	7.3
US & WORLD AFFAIRS	29	1	29.0	29	0	29.0
AP ECONOMICS	12	1	12.0	12	16	-4.0
ANCIENT AND MEDIEVAL	0	0	0.0	0	10	-10.0
TOTAL SOCIAL STUDIES	1535	72	21.3			

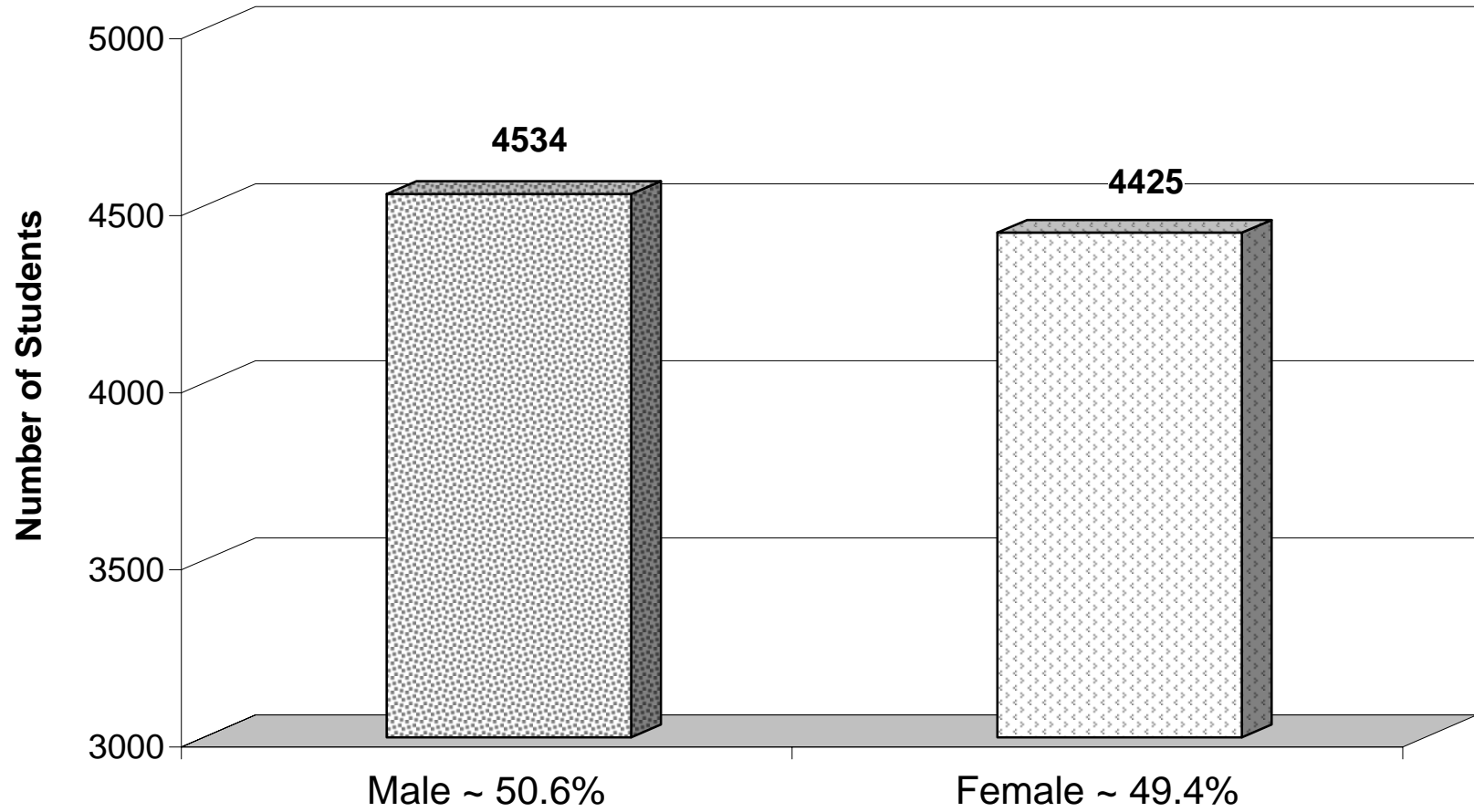
**DIVISION LEVEL DEMOGRAPHICS
WJCC SCHOOL DIVISION TOTALS**

Grade	City of Williamsburg								James City County								Totals		
	Male				Female				Male				Female				City	County	Total
	Black	White	Other	Total	Black	White	Other	Total	Black	White	Other	Total	Black	White	Other	Total			
K	12	7	3	22	5	21	3	29	52	221	13	286	60	186	22	268	51	554	605
1	14	12	3	29	12	10	5	27	46	201	22	269	65	190	23	278	56	547	603
2	10	6	6	22	14	14	2	30	56	219	15	290	54	207	20	281	52	571	623
3	12	15	2	29	9	10	4	23	66	253	25	344	64	215	17	296	52	640	692
4	18	19	4	41	16	10	4	30	63	262	19	344	76	227	12	315	71	659	730
5	5	12	3	20	13	17	2	32	68	236	22	326	57	236	20	313	52	639	691
6	16	13	2	31	12	12	2	26	70	237	14	321	78	233	19	330	57	651	708
7	12	21	3	36	17	15	3	35	86	233	26	345	76	249	15	340	71	685	756
8	17	11	4	32	16	7	4	27	56	248	20	324	66	270	23	359	59	683	742
9	15	15	2	32	14	22	1	37	83	274	28	385	75	253	25	353	69	738	807
10	10	17	4	31	9	12	1	22	60	265	14	339	76	253	21	350	53	689	742
11	7	10	2	19	5	13	2	20	51	233	22	306	61	215	15	291	39	597	636
12	9	11	2	22	13	11	0	24	49	223	17	289	44	233	12	289	46	578	624
Totals	157	169	40	366	155	174	33	362	806	3105	257	4168	852	2967	244	4063	728	8231	8959

Prepared/MET/10-30-2003

Enrollment by Gender

2003 ~ 2004 School Year





APPENDIX