



Plan to Empower.

REPORT



Enrollment Projections
November 2011

AKNOWLEDGEMENTS

DeJONG-HEALY would like to extend our appreciation to the Williamsburg-James City County Public Schools for selecting us to assist them in developing these enrollment projections. In addition, thank you to Scott Burckbuchler for providing information necessary in the completion of this report.

As a consulting team, we appreciate this opportunity to serve your school community as you embark on your vision for the future of education in the Williamsburg-James City County Public Schools.

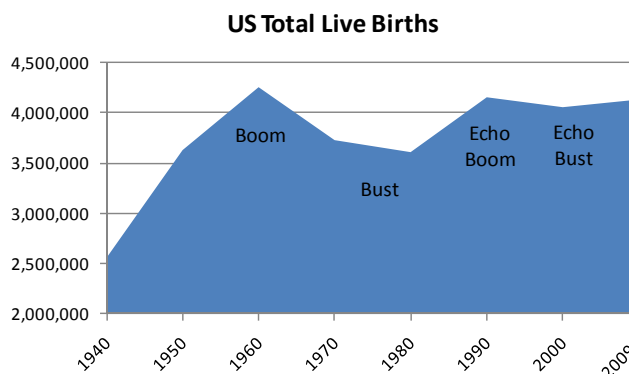
Tracy Healy

President

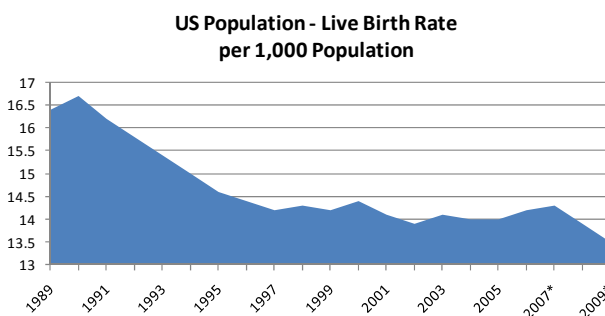
ENROLLMENT PROJECTION METHODOLOGIES

Introduction

Tracing the landscape of the country's public school enrollment back over the past fifty years reveals demographic, economic, and social changes. The United States as a whole continues to undergo major shifts in public student enrollment, due in large part to past events including the baby boom, the availability and use of birth control, and the development of suburbs. The baby boom of the late 1940s and 50s was followed by the baby bust of the 1960s and 70s. This gave rise to the echo baby boom of the 1980s, producing children who primarily graduated in the late 90s through 2007.



Source: CDC, National Vital Statistics Report
*provisional



Source: CDC, National Vital Statistics Report
*provisional

Nationwide, districts continue to experience the effects of the echo baby bust of the 1990s. From the 1950s to the 1970s, a dramatic downsizing of the family unit occurred. A direct result was the declining school enrollment of the 1970s and 1980s. As of the 2000 Census, the size of a family was at an all-time low of 3.14 persons. According to the American Community Survey 2009 Estimate, the average family size increased to 3.23 persons per household. The live birth rate increased for the first time in several years

in 1998 and increased again in 2000. However, the birth rate resumed a descending pattern in 2001 and reached an all-time low of 13.5 in 2009. When projecting future enrollments, it will be vital to track the number of live births, the amount of new housing activity, and the change in household composition. In addition, any of the following factors could cause a significant change in projected student enrollments:

Williamsburg-James City County Public Schools

- ▶ Boundary adjustments
- ▶ New school openings
- ▶ Changes/additions in program offerings
- ▶ Preschool programs
- ▶ Change in grade configuration
- ▶ Interest rates/unemployment shifts
- ▶ Magnet/Charter/Private school opening or closure
- ▶ Zoning changes
- ▶ Unplanned new housing activity
- ▶ Planned, but not built, housing

Obviously, certain factors can be gauged and planned for far better than others. For instance, it may be relatively straightforward to gather housing data from local builders regarding the total number of lots in a planned subdivision and calculate the potential student yield. However, planning for changes in the unemployment rate, and how these may either boost or reduce public school enrollment, proves more difficult. In any case, it is essential to gather a wide variety of information in preparation for producing enrollment projections.

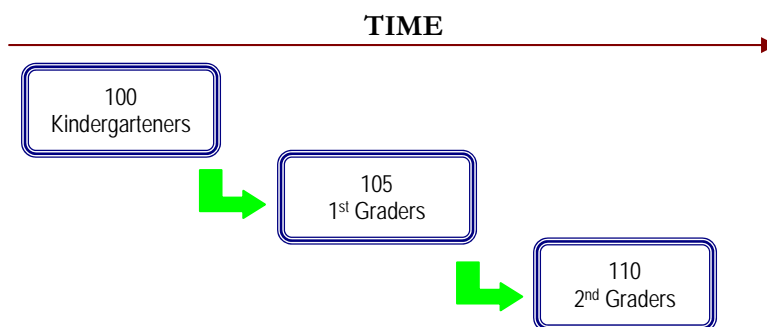
When looking ahead at a school district's enrollment over the next two, five, or ten years, it is helpful to approach the process from a global perspective. For example: How many new homes have been constructed each year? How many births have occurred each year in relation to the resident population? Is housing experiencing a turnover – if so, what is the composition of families moving in/out? Are more or less students attending private school or being home-schooled? What has the unemployment rate trend been over the past ten years? What new educational policies are in place now that could affect student enrollment figures?

The data sets generated from questions such as these have led to the development of general methodologies to project future student enrollments. They are as follows:

Williamsburg-James City County Public Schools

Cohort Survival Method

A cohort is a group of persons [in this case, students]. The cohort survival projection methodology uses previous live birth data and historical student enrollments to “age” a known population or cohort throughout the school grades. For instance, a cohort begins when a group of kindergarteners enrolls in grade K and moves to first grade the following year, second grade the next year, and so on.



A “survival ratio” is developed to track how this group of students grew or shrunk in number as they moved through the grade levels. By developing survival ratios for each grade transition [i.e., 2nd to 3rd grade] over a ten-year period of time, patterns emerge and can be folded into projections by using the survival ratios as a multiplier.

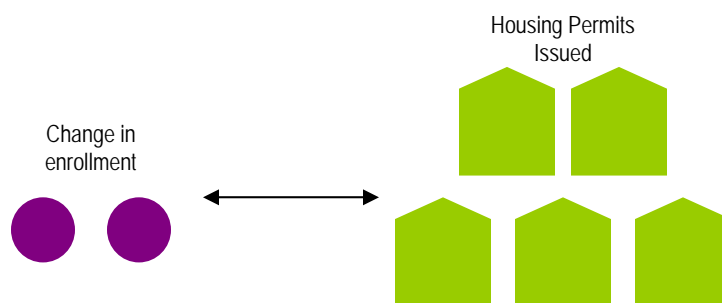
For example, if student enrollment has consistently increased from the 8th to the 9th grade over the past ten years, the survival ratio would be greater than 100% and could be multiplied by the current 8th grade to develop a projection for next year’s 9th grade. This methodology can be carried through to develop ten years of projection figures. Because there is not a grade cohort to follow for students coming into kindergarten, live birth counts are used to develop a survival ratio. Babies born five years previous to the kindergarten class are compared in number, and a ratio can be developed to project future kindergarten enrollments.

The cohort survival method is useful in areas where population is stable [relatively flat, growing steadily, or declining steadily], and where there have been no significant fluctuations in enrollment, births, and housing patterns from year to year.

Williamsburg-James City County Public Schools

Housing

Enrollment projections can also be determined by analyzing the housing data for the areas that make up a school district. Yield factors can be established by comparing the historic change in enrollment from year to year divided by the total number of building or occupancy permits issued. For example, if student enrollment has increased by approximately 100 students each year and approximately 200 building permits have been issued each year for the past ten years, then the yield factor would be approximately .5 students per building permit.



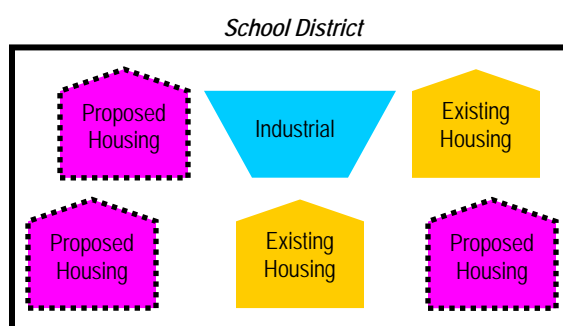
Once yield factors are established, the number of new students per year can be estimated by multiplying the yield factor by the number of projected new housing units. This method is effective when the rate of student enrollment far exceeds the live birth rate.

If housing demolitions are occurring in a district, these must also be taken into account. For instance, if housing demolitions/withdrawals have increased rapidly over recent years while new housing starts have remained relatively constant over many years, the conclusion may be that some of the new housing starts will simply be replacements for the families displaced by the demolitions. Of course, housing value and household composition would need to be further analyzed to confirm that this is indeed the case. It is possible that enrollment may remain flat or even decline even though there is new housing occurring in the area.

Williamsburg-James City County Public Schools

Land-Saturation Analysis

Housing data also drives the land-saturation analysis enrollment methodology. In areas where there is a high rate of development and the future development patterns in the area are clear, a “build-out” scenario can be developed. The scenario takes into consideration the remaining acreage to be developed, planned rate of completion, zoning policies, density per acre, type of housing, and ratios of school-age children per household type. This method is particularly useful in areas experiencing rapid growth.



Geographic Information Systems

The need for better tools and easier manipulation of data has led to a new industry standard in planning – GIS [Geographic Information Systems]. GIS technology allows school districts to quickly analyze countless data sets including birth data, housing information, and enrollment statistics. When paired with enrollment projections, GIS becomes an invaluable information-management and decision-making tool. For example, because data can be displayed visually, issues such as where new facilities should be located and how neighborhood schools affect the district become much clearer. Also, the software can be used to manage specific building data, becoming a maintenance-managing tool as well. Often, county or city offices are already implementing GIS technology and data can be shared and expanded among these organizations in the district. The opportunity also exists for collaboration with other agencies to share in the cost of initial implementation of GIS.

Williamsburg-James City County Public Schools

HISTORICAL ENROLLMENT

Over the past ten years, student enrollment in the Williamsburg-James City County Public Schools has increased by 2,118 students in grades K – 12. Total enrollment for the 2011-12 school year is 10,671, an increase of 107 students from the previous school year.

The following table and graphs illustrate the District’s enrollment history from 2002-03 through 2011-12.

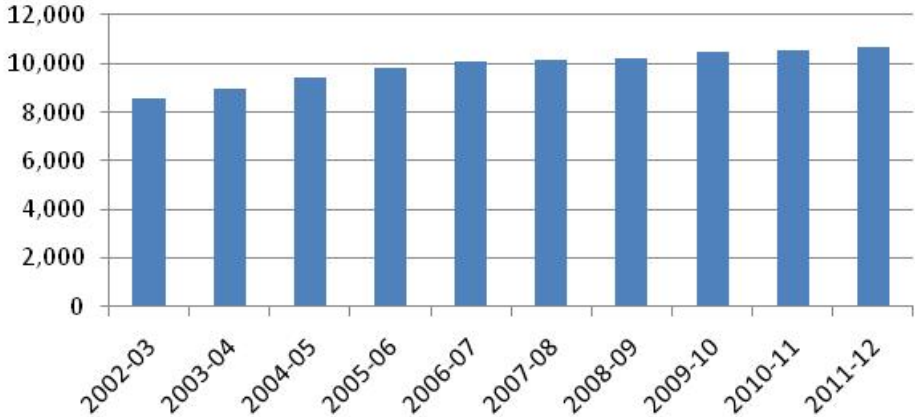
**Williamsburg-James City County School District
Historical Enrollment**

Grade	2002-03	2003-04	2004-05	2005-06	2006-07	2007-08	2008-09	2009-10	2010-11	2011-12
K	575	605	697	704	731	689	702	733	684	797
1	552	603	655	766	740	732	712	734	756	747
2	639	623	643	689	804	736	762	750	777	771
3	695	692	665	718	716	802	776	803	778	793
4	644	730	731	693	741	736	829	803	813	795
5	687	691	779	767	738	749	787	857	822	809
K - 5 Total	3,792	3,944	4,170	4,337	4,470	4,444	4,568	4,680	4,630	4,712
6	683	708	730	810	768	717	749	788	861	845
7	726	756	734	765	820	775	748	782	813	880
8	678	742	781	760	793	835	786	781	779	835
6 - 8 Total	2,087	2,206	2,245	2,335	2,381	2,327	2,283	2,351	2,453	2,560
9	768	807	883	908	893	898	956	939	891	850
10	703	742	801	878	881	887	901	938	904	871
11	629	636	677	693	812	793	785	852	853	833
12	574	624	626	669	668	788	755	748	833	845
9 - 12 Total	2,674	2,809	2,987	3,148	3,254	3,366	3,397	3,477	3,481	3,399
Grand Total	8,553	8,959	9,402	9,820	10,105	10,137	10,248	10,508	10,564	10,671

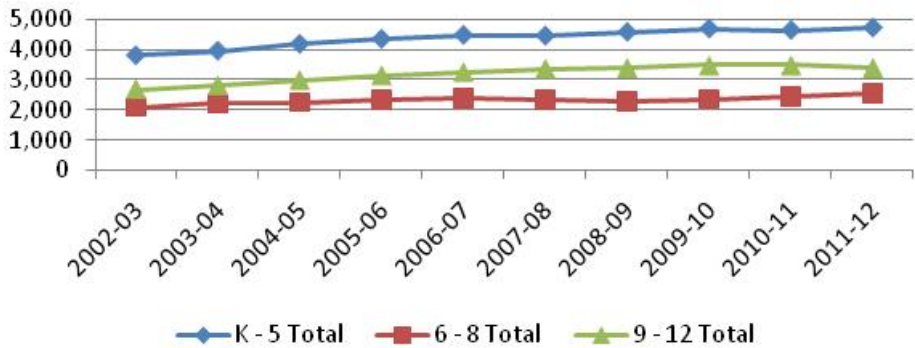
Source: Williamsburg-James City County School District

Williamsburg-James City County Public Schools

Williamsburg-James City County School District
Historical Enrollment



Williamsburg-James City County School District
Historical Enrollment by Grade Group



Williamsburg-James City County Public Schools

ACTUAL VERSUS PROJECTED ENROLLMENT

The following chart compares the previously developed enrollment projections, by school, versus the actual enrollments for the 2011-12 school year. Actual vs. projected enrollment for the 2011-12 school year was within 129 students or 1.21 percent.

The projections for Blayton ES and Toana MS were each within 1 student while the projection for Stonehouse Elementary School was within 52 students. The majority of the school projections was within 15 or less students.

School	2011-12	2011-12 Most Likely Projection	Difference	% Difference
Baker Elementary	509	498	11	2.16%
Byrd Elementary	461	488	-27	-5.86%
Montague Elementary	431	467	-36	-8.35%
Norge Elementary	535	540	-5	-0.93%
Whaley Elementary	471	448	23	4.88%
James River Elementary	493	482	11	2.23%
Stonehouse Elementary	647	699	-52	-8.04%
Matoaka Elementary	732	740	-8	-1.09%
Blayton Elementary	433	434	-1	-0.23%
Berkeley Middle	936	921	15	1.60%
Toano Middle	705	704	1	0.14%
Hornsby Middle	919	926	-7	-0.76%
Lafayette High	1,077	1,104	-27	-2.51%
Jamestown High	1,186	1,208	-22	-1.85%
Warhill High	1,136	1,141	-5	-0.44%
Total	10,671	10,800	-129	-1.21%

Williamsburg-James City County Public Schools

LIVE BIRTH DATA

Utilization of live birth data is recommended when projecting future kindergarten enrollments. This data provides a helpful overall trend. Large bubbles in birth counts, either up or down, can also be planned for and anticipated by the District.

In addition, the live birth counts are used in determining a birth-to-kindergarten survival ratio. This ratio identifies the percentage of children born in a representative area who attend kindergarten in the District five years later. The survival ratios for birth-to-kindergarten as well as grades 1-12 can be found later in this report.

The chart and graph below illustrate live birth counts in Williamsburg and James City County.

Live Birth Count 1996-2010

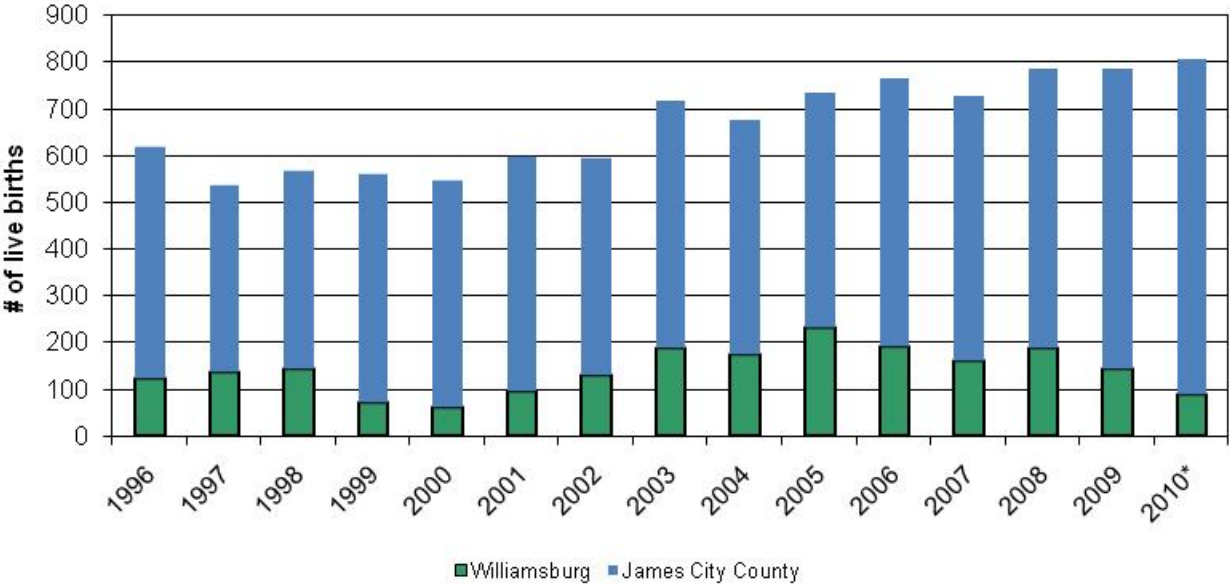
Year	Williamsburg	James City County	Total
1996	122	497	619
1997	135	400	535
1998	144	423	567
1999	72	487	559
2000	59	487	546
2001	96	502	598
2002	129	466	595
2003	188	532	720
2004	172	504	676
2005	233	502	735
2006	192	576	768
2007	161	569	730
2008	186	602	788
2009	142	644	786
2010*	86	721	807

Source: Virginia Department of Health, Office of Vital Records and Health Statistics

*preliminary data

Williamsburg-James City County Public Schools

Live Birth Count



Williamsburg-James City County Public Schools

DEMOGRAPHICS

The Williamsburg-James City County Public Schools is comprised of Williamsburg City and James City County, Virginia. General demographic data is included in the following table for the county and population data is included for both James City County and Williamsburg.

James City County General Demographic Information

	James City County
Per Capita Income	\$36,135
Median Household Income	\$74,706
Persons Below Poverty	6.7%

Source: US Census, American Community Survey 2010

Total Population

	2000	2010
Williamsburg City	11,988	12,330*
James City County	48,102	67,009

Source: US Census, American Community Survey 2000, 2009 & 2010

* 2009 estimate

Following are block group estimates and projections provided by ESRI Business Information Solutions (ESRI BIS). ESRI BIS uses a time series of estimates from the U.S. Census Bureau that includes the latest estimates and intercensal estimates adjusted for error of closure. The Census Bureau's time series is consistent, but testing has revealed improved accuracy by using a variety of sources to track county population trends.

ESRI BIS also employs a time series of building permits and housing starts plus residential deliveries. Finally, local data sources that tested well against Census 2000 are reviewed. Data sources are integrated and then analyzed by Census Block Groups.

Sources of data include:

- ▶ Supplementary Surveys of the Census Bureau
- ▶ Bureau of Labor Statistics' (BLS) Local Area Unemployment Statistics
- ▶ BLS Occupational Employment Statistics
- ▶ InfoUSA
- ▶ U.S. Bureau of the Census' Current Population Survey
- ▶ National Planning Association Data Service

Williamsburg-James City County Public Schools

Below is a list of definitions as they appear on the U.S. Census Bureau website, to aid in interpretation of the following tables and maps.

Household:

A household includes all the people who occupy a housing unit as their usual place of residence.

Average family size:

A measure obtained by dividing the number of members of families by the total number of families (or family householders).

Family household (Family):

A family includes a householder and one or more people living in the same household who are related to the householder by birth, marriage, or adoption. All people who are related to the householder are regarded as members of his or her family. A family household may contain people not related to the householder, but those people are not included as part of the householder's family in census tabulations. Thus, the number of family households is equal to the number of families, but family households may include more members than do families. A household can contain only one family for purposes of census tabulations. Not all households contain families since a household may comprise a group of unrelated people or one person living alone.

Householder:

The person, or one of the people, in whose name the home is owned, being bought, or rented. If there is no such person present, any household member 15 years old and over can serve as the householder for the purposes of the census. Two types of householders are distinguished: a family householder and a nonfamily householder. A family householder is a householder living with one or more people related to him or her by birth, marriage, or adoption. The householder and all people in the household related to him are family members. A nonfamily householder is a householder living alone or with nonrelatives only.

Williamsburg-James City County Public Schools

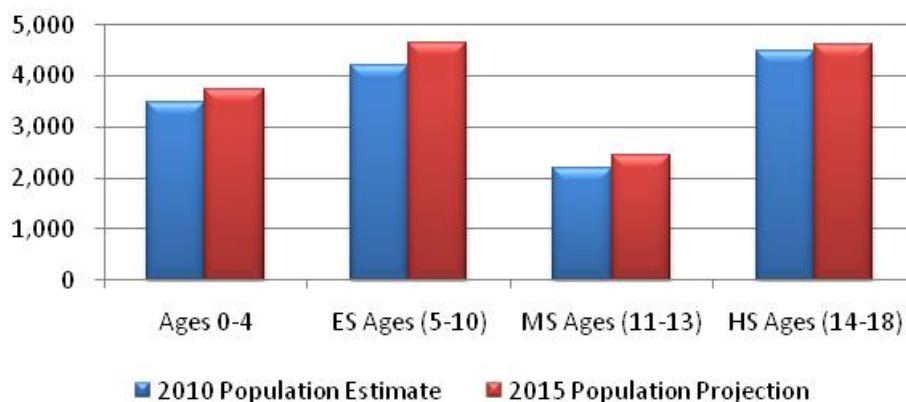
The following tables illustrate the current estimates and 5-year population projections based on block groups that comprise the school district, indicating areas of current and projected growth. The tables have been developed to determine selected age group projections and projections for household income, family size, and family income.

The 0-18 year-old population in the District currently totals 14,367. This population is projected to increase by 1,044 children, or approximately 7 percent.

School District	2010 Population Estimate	2015 Population Projection
Total Population	71,108	78,241
Ages 0-4	3,470	3,733
ES Ages (5-10)	4,207	4,630
MS Ages (11-13)	2,188	2,437
HS Ages (14-18)	4,501	4,611
Total Ages 0-18	14,367	15,411
Average Age	40	41

Source: ESRI BIS

School District Population Estimates & Projections by Age Group





Williamsburg-James City County Public Schools

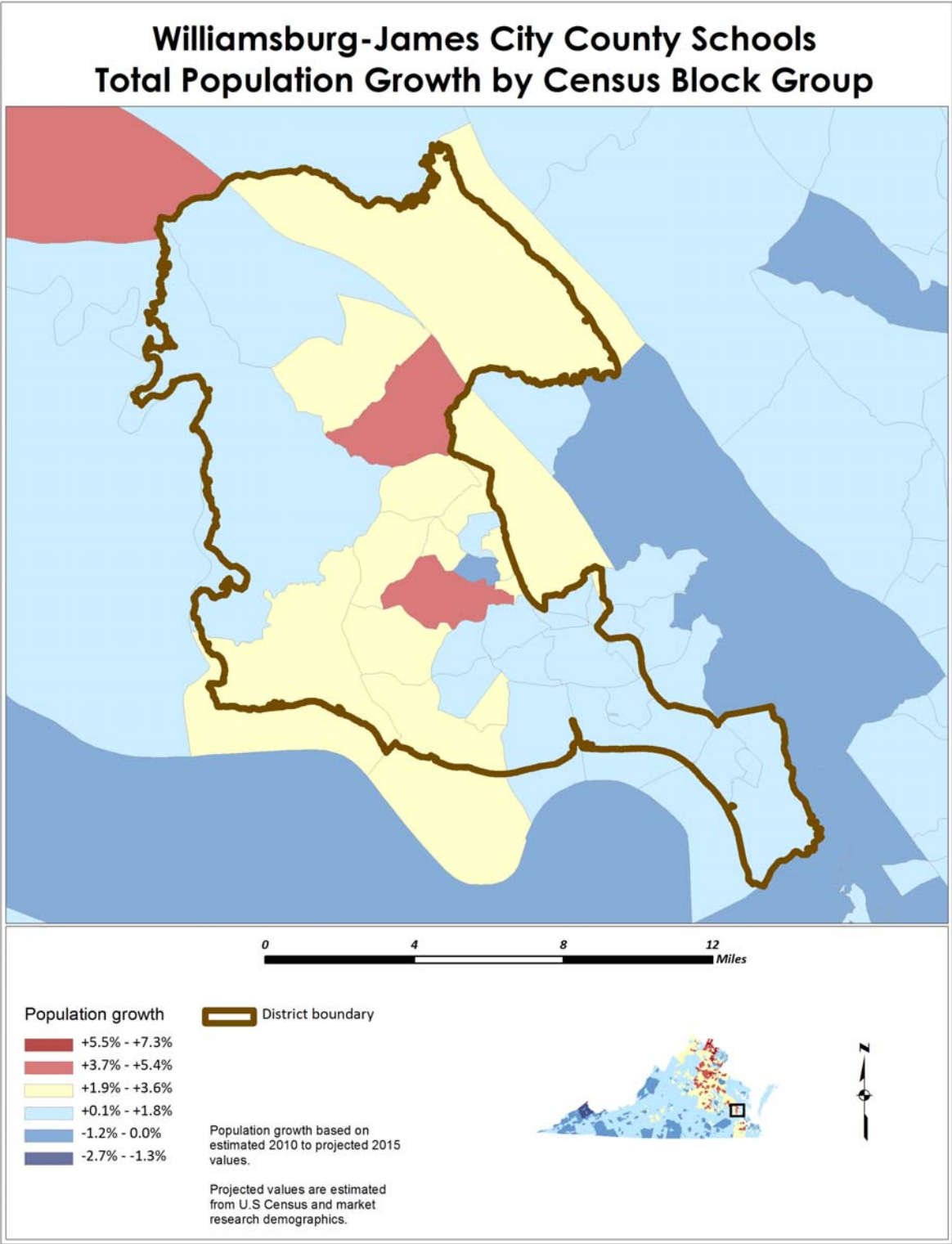
Average household and family incomes in the District are projected to increase by 13% and 11%, respectively over a 5-year period. Average family size is projected to remain the same.

School District	2010 Population Estimate	2015 Population Projection
Average Household Income	\$77,448	\$87,878
Average Family Size	2.75	2.75
Average Family Income	\$90,395	\$99,997

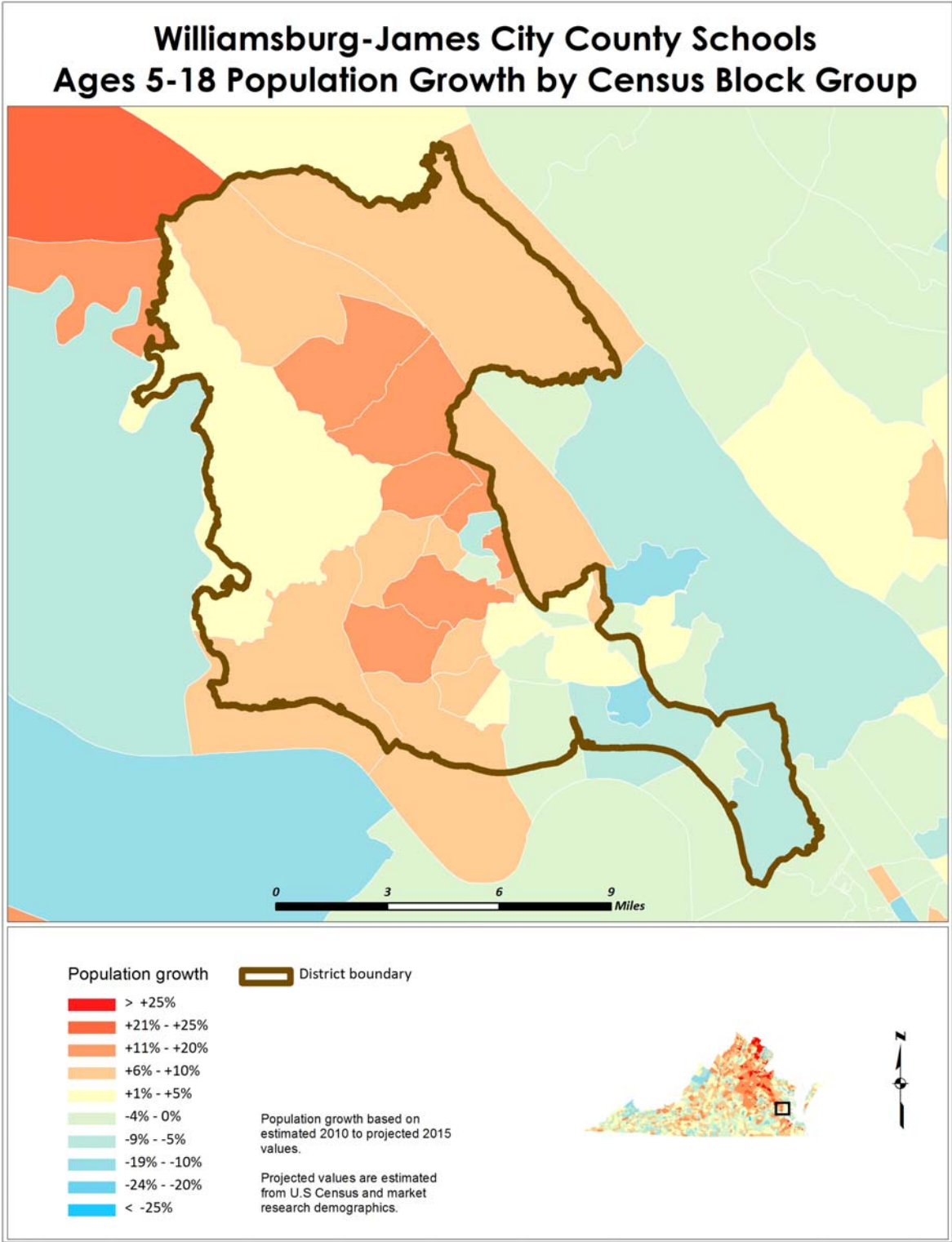
The maps on the following pages illustrate the data identified in the tables. The color coding identifies areas within the District that may be increasing or decreasing at different rates than others.



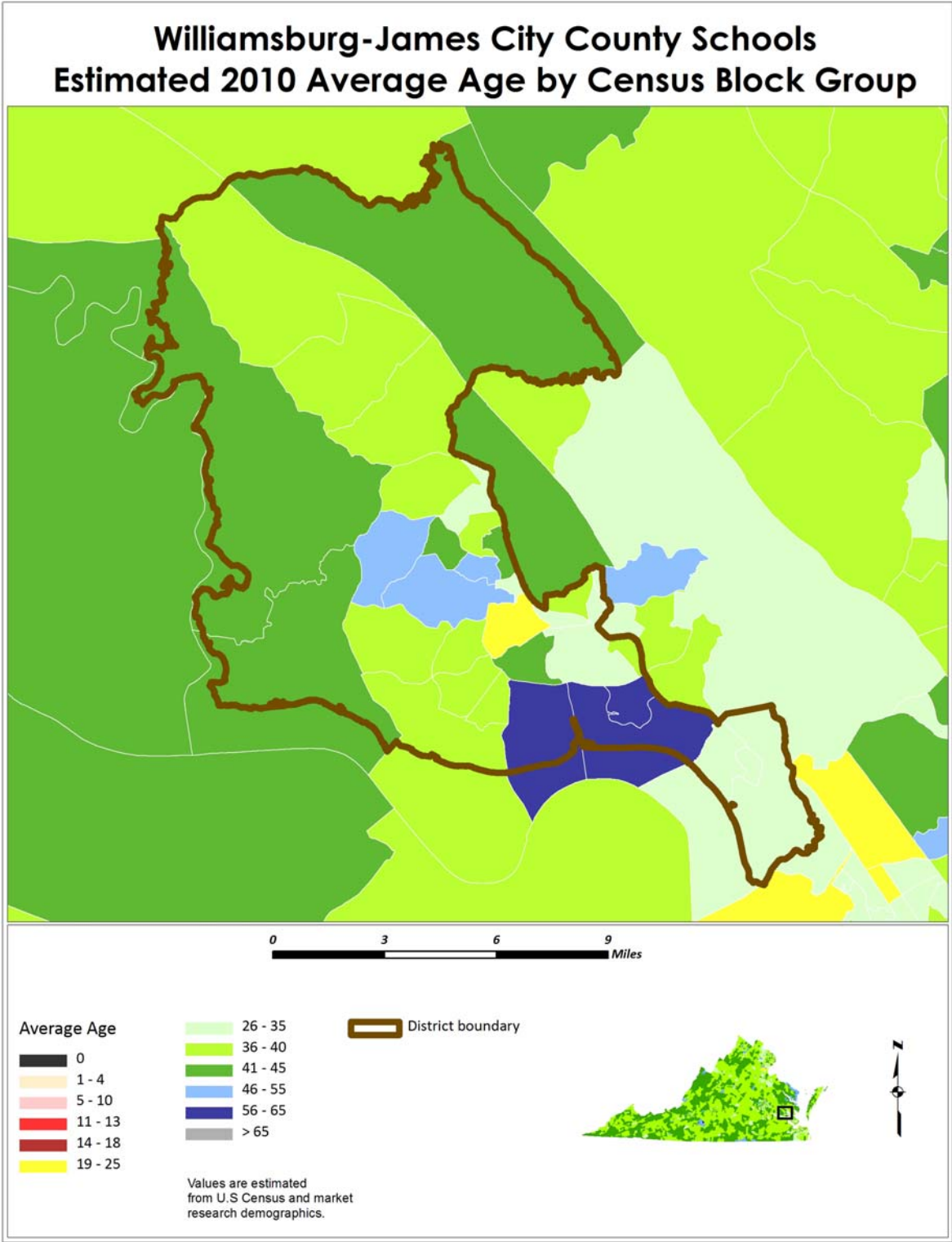
Williamsburg-James City County Public Schools



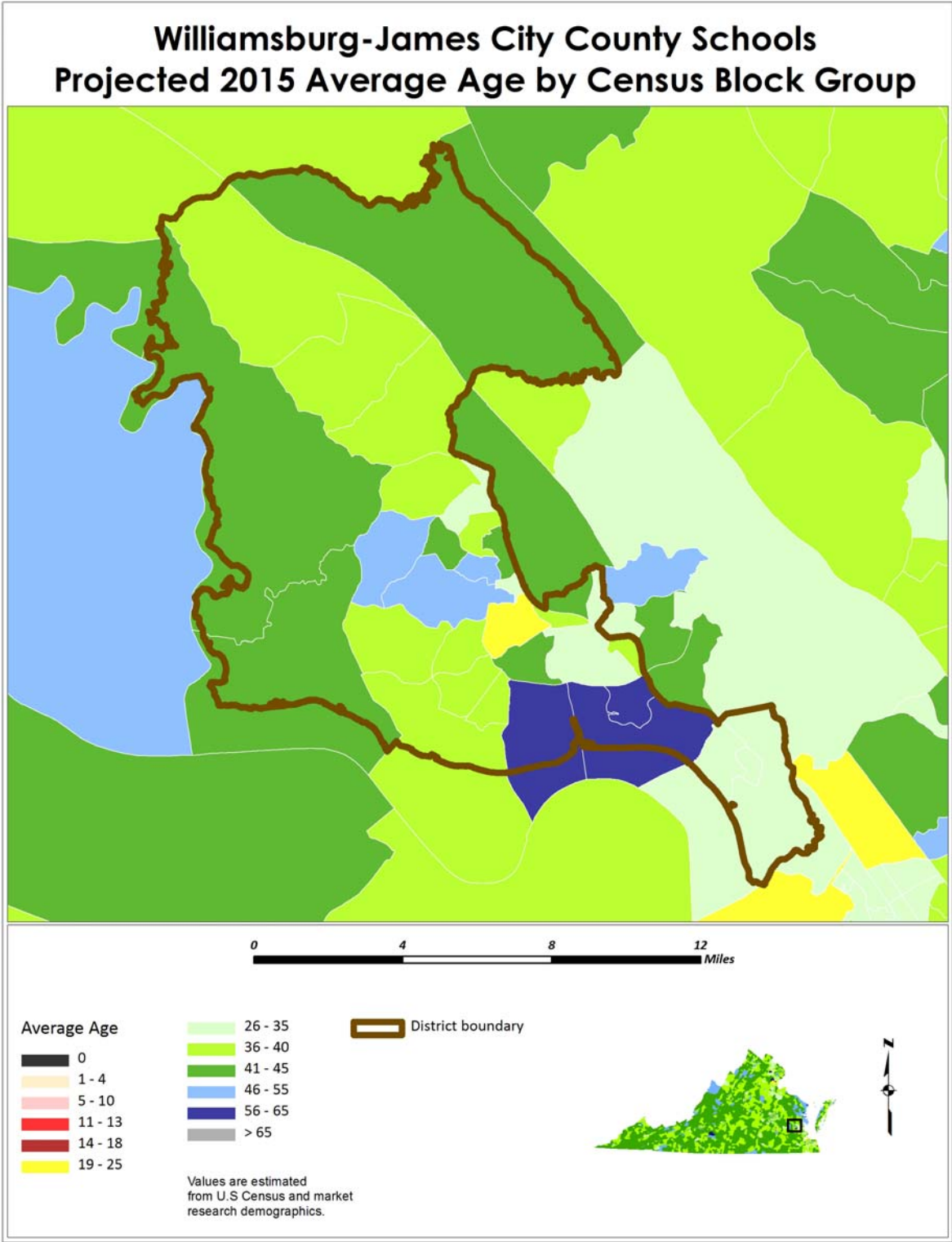
Williamsburg-James City County Public Schools



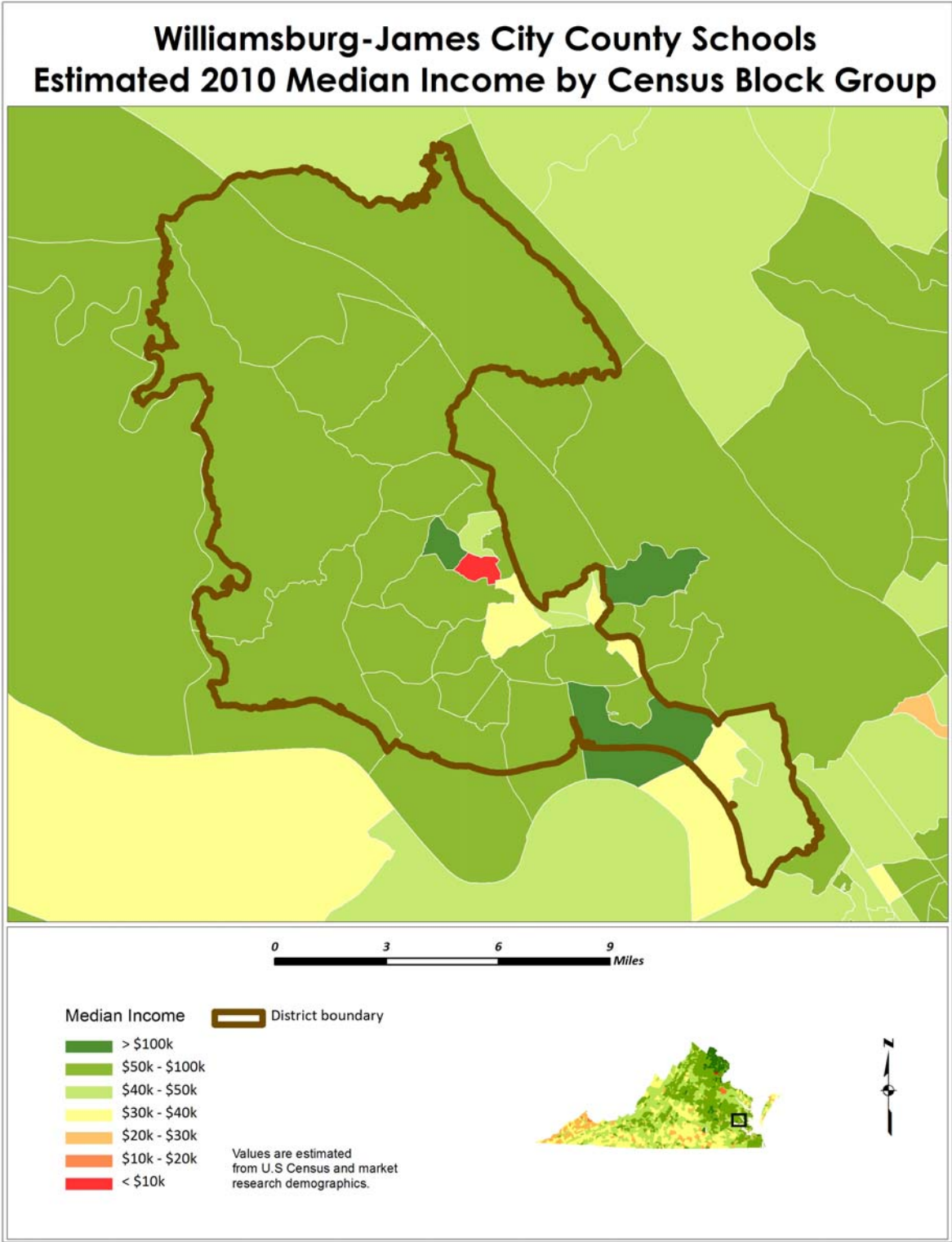
Williamsburg-James City County Public Schools



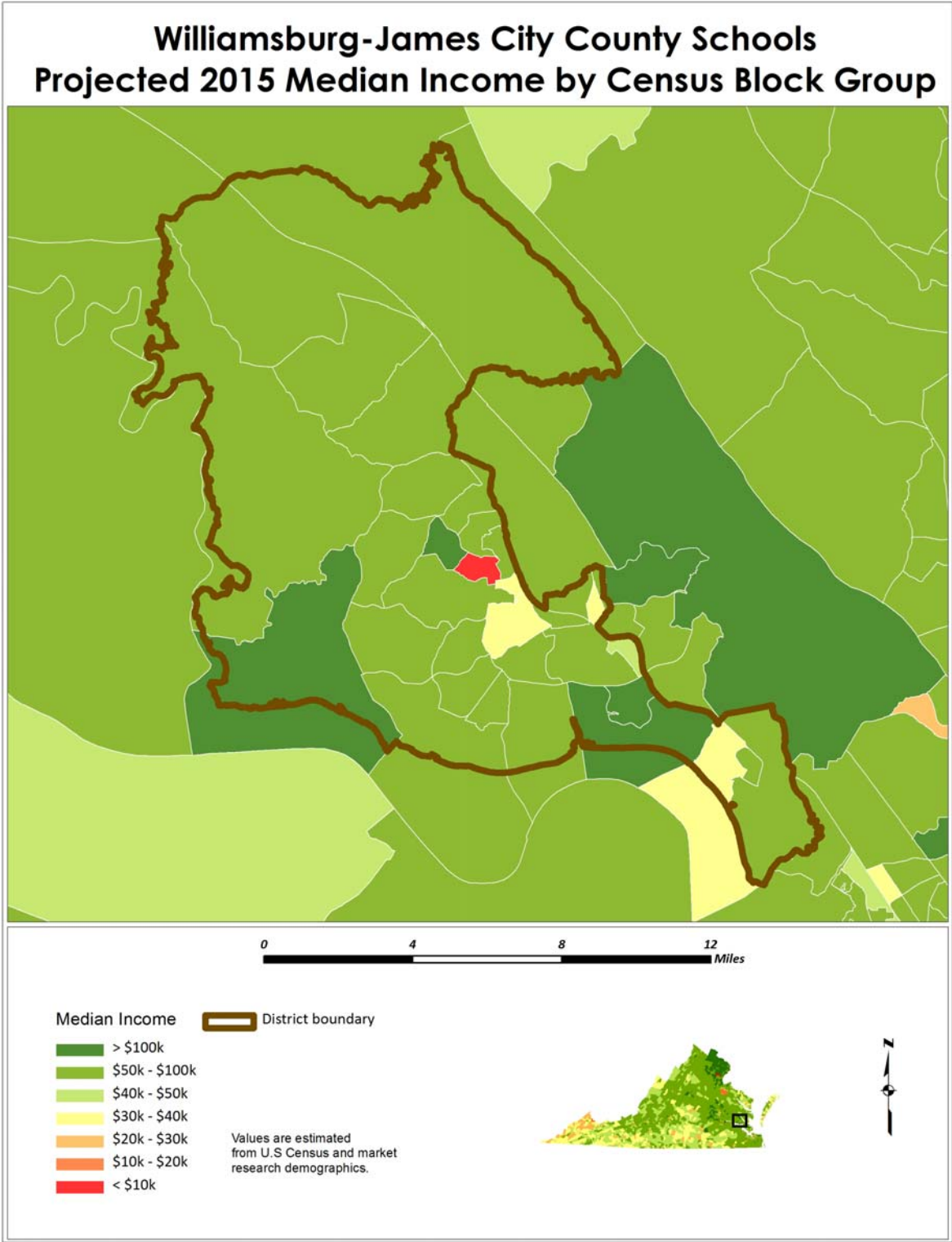
Williamsburg-James City County Public Schools



Williamsburg-James City County Public Schools



Williamsburg-James City County Public Schools



Williamsburg-James City County Public Schools

HOUSING INFORMATION

Over the past ten years, the total number of new single family dwellings in Williamsburg and James City County has fluctuated from a low of 388 in 2009 to a high of 1,209 in 2005. From 2009 to 2010, the number permits increased by 33 percent. However, permits for 2011 are tracking at a lower rate than seen in 2009 through August.

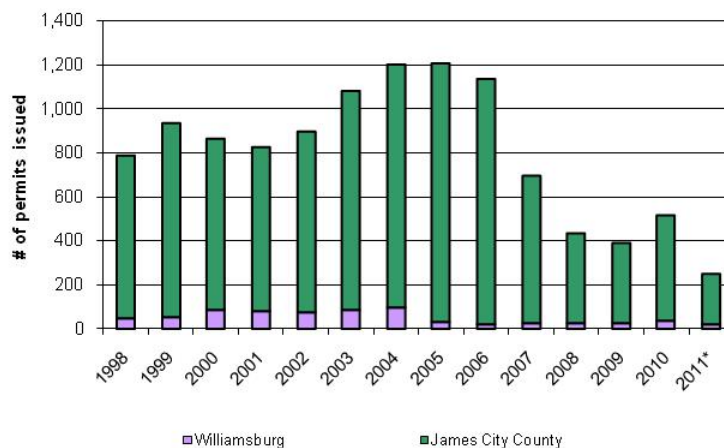
of Single-Family Building Permits Issued

Year	Williamsburg	James City County	Total
1998	44	745	789
1999	50	885	935
2000	85	781	866
2001	80	745	825
2002	71	827	898
2003	85	997	1,082
2004	93	1,111	1,204
2005	31	1,178	1,209
2006	18	1,118	1,136
2007	25	669	694
2008	22	413	435
2009	21	367	388
2010	34	482	516
2011*	19	228	247

Source: SOCDs Building Permits Database

*through August 2011

Single-Family Building Permits



Williamsburg-James City County Public Schools

SURVIVAL RATIOS

The chart below demonstrates the changes in enrollment as students move through the system. Percentages greater than 100 indicate that there are more students than there were in the previous grade the previous year. In other words, there was growth and new students were added to the system. Percentages less than 100 indicate that there was decline or students left the system.

- ▶ Birth to Kindergarten: This ratio indicates the number of children born in the area who attend kindergarten in the District 5 years later. Percentages less than 100% result from movement out of the district, attendance at a non-public or charter school, or residence in another district within the same area.
- ▶ Grades 8-9: The higher than usual percentage often is a result of school district promotion policies. Often in school districts, students are promoted from 8th to 9th grade and after one year in 9th grade do not have sufficient credits to be classified as 10th graders and are counted again as 9th graders the following year. There may also be students who are attending private or charter schools or are home schooled through grade 8 and then attend public schools for high school education.

The following table illustrates the survival ratios used in developing the enrollment projections for the Williamsburg-James City County Public Schools.

from	to	birth -> K	K->1	1->2	2->3	3->4	4->5	5->6	6->7	7->8	8->9	9->10	10->11	11->12
2002	2003	106.7%	104.9%	112.9%	108.3%	105.0%	107.3%	103.1%	110.7%	102.2%	119.0%	96.6%	90.5%	99.2%
2003	2004	124.7%	108.3%	106.6%	106.7%	105.6%	106.7%	105.6%	103.7%	103.3%	119.0%	99.3%	91.2%	98.4%
2004	2005	128.9%	109.9%	105.2%	111.7%	104.2%	104.9%	104.0%	104.8%	103.5%	116.3%	99.4%	86.5%	98.8%
2005	2006	122.2%	105.1%	105.0%	103.9%	103.2%	106.5%	100.1%	101.2%	103.7%	117.5%	97.0%	92.5%	96.4%
2006	2007	115.8%	100.1%	99.5%	99.8%	102.8%	101.1%	97.2%	100.9%	101.8%	113.2%	99.3%	90.0%	97.0%
2007	2008	97.5%	103.3%	104.1%	105.4%	103.4%	106.9%	100.0%	104.3%	101.4%	114.5%	100.3%	88.5%	95.2%
2008	2009	108.4%	104.6%	105.3%	105.4%	103.5%	103.4%	100.1%	104.4%	104.4%	119.5%	98.1%	94.6%	95.3%
2009	2010	93.1%	103.1%	105.9%	103.7%	101.2%	102.4%	100.5%	103.2%	99.6%	114.1%	96.3%	90.9%	101.3%
2010	2011	103.6%	109.2%	102.0%	101.9%	101.9%	99.3%	102.4%	102.0%	102.2%	109.1%	97.5%	92.0%	98.6%
	average	111.22%	105.392%	105.15%	105.2%	103.43%	104.3%	101.4%	103.9%	102.5%	115.799%	98.213%	90.751%	97.808%
	standard deviation	11.744%	3.002%	3.428%	3.300%	1.314%	2.734%	2.416%	2.741%	1.368%	3.216%	1.355%	2.187%	1.882%

Williamsburg-James City County Public Schools

ENROLLMENT PROJECTIONS

Following is the ten-year projected enrollment based on the slowing housing market and downturn in the economy. According to this projection, enrollment would increase 2,029 students in grades K – 12 from the current 2011-12 enrollment of 10,671 to the 2021-22 projected enrollment of 12,700 students.

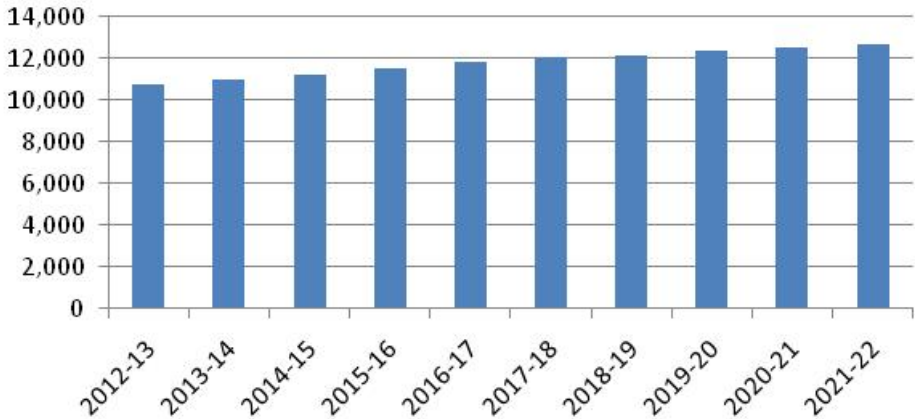
Williamsburg-James City County School District Projected Enrollment

Grade	2012-13	2013-14	2014-15	2015-16	2016-17	2017-18	2018-19	2019-20	2020-21	2021-22
K	797	762	822	820	806	806	806	806	806	806
1	717	835	793	856	856	836	836	836	836	836
2	802	759	881	838	902	901	883	883	883	883
3	819	841	793	924	877	947	945	925	925	925
4	805	845	867	818	951	905	976	974	953	953
5	851	839	880	903	852	992	943	1,018	1,013	993
K - 5 Total	4,791	4,881	5,036	5,159	5,244	5,387	5,389	5,442	5,416	5,396
6	826	851	833	879	904	851	991	943	1,017	1,014
7	897	858	860	872	913	939	886	1,031	979	1,058
8	829	913	875	900	889	930	956	902	1,049	997
6 - 8 Total	2,552	2,622	2,568	2,651	2,706	2,720	2,833	2,876	3,045	3,069
9	911	969	1,066	1,020	1,053	1,038	1,086	1,116	1,053	1,226
10	877	896	953	1,049	1,004	1,035	1,021	1,068	1,098	1,035
11	839	814	830	883	972	931	959	946	991	1,018
12	825	810	786	801	851	939	898	927	913	956
9 - 12 Total	3,452	3,489	3,635	3,753	3,880	3,943	3,964	4,057	4,055	4,235
Grand Total	10,795	10,992	11,239	11,563	11,830	12,050	12,186	12,375	12,516	12,700

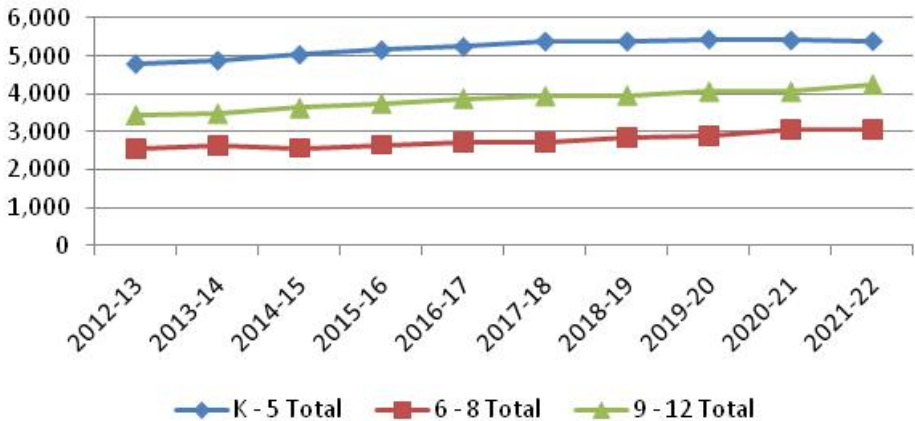
Source: DeJONG-HEALY

Williamsburg-James City County Public Schools

Williamsburg-James City County School District
Projected Enrollment



Williamsburg-James City County School District
Projected Enrollment by Grade Group



Williamsburg-James City County Public Schools

Historical & Projected Enrollment by School

The following charts illustrate the historical and projected enrollment of each school in the District.

Baker Elementary School

Historical Enrollment

Grade	2002-03	2003-04	2004-05	2005-06	2006-07	2007-08	2008-09	2009-10	2010-11	2011-12
K	104	109	140	111	128	75	78	77	69	84
1	98	114	116	139	112	85	87	77	68	82
2	116	119	123	118	158	84	88	88	66	75
3	102	128	122	130	112	103	101	96	88	71
4	132	106	147	105	129	89	103	108	95	97
5	135	146	124	149	113	104	93	105	94	100
K - 5 Total	687	722	772	752	752	540	550	551	480	509

Source: Williamsburg-James City County School District

Baker Elementary School

Projected Enrollment

Grade	2012-13	2013-14	2014-15	2015-16	2016-17	2017-18	2018-19	2019-20	2020-21	2021-22
K	84	80	87	86	85	85	85	85	85	85
1	79	92	87	94	94	92	92	92	92	92
2	78	74	86	82	88	88	86	86	86	86
3	73	75	71	83	79	85	85	83	83	83
4	98	103	106	100	116	110	119	119	116	116
5	105	104	109	112	105	122	116	126	125	123
K - 5 Total	517	528	546	557	567	582	583	591	587	585

Source: DeJONG-HEALY

Williamsburg-James City County Public Schools

Byrd Elementary School

Historical Enrollment

Grade	2002-03	2003-04	2004-05	2005-06	2006-07	2007-08	2008-09	2009-10	2010-11	2011-12
K	69	67	69	85	104	74	75	73	76	78
1	68	71	71	101	90	84	75	89	72	84
2	82	76	60	85	100	75	85	86	84	65
3	101	83	69	75	83	93	77	92	77	79
4	83	102	82	86	74	71	81	83	81	76
5	93	83	115	88	97	71	78	88	80	79
K - 5 Total	496	482	466	520	548	468	471	511	470	461

Source: Williamsburg-James City County School District

Byrd Elementary School

Projected Enrollment

Grade	2012-13	2013-14	2014-15	2015-16	2016-17	2017-18	2018-19	2019-20	2020-21	2021-22
K	78	75	80	80	79	79	79	79	79	79
1	81	94	89	96	96	94	94	94	94	94
2	68	64	74	71	76	76	75	75	75	75
3	82	84	79	92	87	94	94	92	92	92
4	77	81	83	78	91	87	93	93	91	91
5	83	82	86	88	83	97	92	99	99	97
K - 5 Total	469	480	491	505	512	527	527	532	530	528

Source: DeJONG-HEALY

Williamsburg-James City County Public Schools

Montague Elementary School Historical Enrollment

Grade	2002-03	2003-04	2004-05	2005-06	2006-07	2007-08	2008-09	2009-10	2010-11	2011-12
K	90	121	116	132	134	100	95	100	46	72
1	96	106	132	125	136	101	94	97	76	61
2	92	114	110	146	128	99	101	87	86	78
3	123	103	123	131	155	96	95	98	77	77
4	89	133	115	126	138	125	102	95	86	70
5	122	112	142	119	139	104	122	104	83	73
K - 5 Total	612	689	738	779	830	625	609	581	454	431

Source: Williamsburg-James City County School District

Montague Elementary School Projected Enrollment

Grade	2012-13	2013-14	2014-15	2015-16	2016-17	2017-18	2018-19	2019-20	2020-21	2021-22
K	72	69	74	74	73	73	73	73	73	73
1	59	68	65	70	70	68	68	68	68	68
2	81	77	89	85	91	91	89	89	89	89
3	80	82	77	90	85	92	92	90	90	90
4	71	74	76	72	84	80	86	86	84	84
5	77	76	79	82	77	90	85	92	92	90
K - 5 Total	440	446	460	473	480	494	493	498	496	494

Source: DeJONG-HEALY

Williamsburg-James City County Public Schools

Norge Elementary School

Historical Enrollment

Grade	2002-03	2003-04	2004-05	2005-06	2006-07	2007-08	2008-09	2009-10	2010-11	2011-12
K	93	90	115	110	97	93	96	80	87	91
1	106	89	89	113	111	92	91	96	83	92
2	101	111	94	93	112	104	88	101	90	84
3	117	117	114	105	99	109	100	96	82	89
4	105	120	112	118	102	102	113	109	81	95
5	103	115	120	118	115	102	113	110	97	84
K - 5 Total	625	642	644	657	636	602	601	592	520	535

Source: Williamsburg-James City County School District

Norge Elementary School

Projected Enrollment

Grade	2012-13	2013-14	2014-15	2015-16	2016-17	2017-18	2018-19	2019-20	2020-21	2021-22
K	91	87	94	94	92	92	92	92	92	92
1	88	103	98	105	105	103	103	103	103	103
2	87	83	96	91	98	98	96	96	96	96
3	92	94	89	104	98	106	106	104	104	104
4	96	101	104	98	114	108	117	116	114	114
5	88	87	91	94	89	103	98	106	105	103
K - 5 Total	542	555	572	586	596	610	612	617	614	612

Source: DeJONG-HEALY

Williamsburg-James City County Public Schools

Whaley Elementary School

Historical Enrollment

Grade	2002-03	2003-04	2004-05	2005-06	2006-07	2007-08	2008-09	2009-10	2010-11	2011-12
K	78	75	91	94	83	64	85	76	74	89
1	69	79	77	92	105	74	57	76	68	68
2	79	77	88	75	107	84	76	57	87	77
3	89	88	84	103	78	82	74	79	57	93
4	87	98	92	90	104	63	89	82	77	56
5	96	80	102	101	96	62	65	89	67	88
K - 5 Total	498	497	534	555	573	429	446	459	430	471

Source: Williamsburg-James City County School District

Whaley Elementary School

Projected Enrollment

Grade	2012-13	2013-14	2014-15	2015-16	2016-17	2017-18	2018-19	2019-20	2020-21	2021-22
K	89	85	92	92	90	90	90	90	90	90
1	65	76	72	78	78	76	76	76	76	76
2	80	76	88	84	90	90	88	88	88	88
3	96	99	93	108	103	111	111	108	108	108
4	57	60	61	58	67	64	69	69	67	67
5	93	91	96	98	93	108	103	111	110	108
K - 5 Total	480	487	502	518	521	539	537	542	539	537

Source: DeJONG-HEALY

Williamsburg-James City County Public Schools

James River Elementary School Historical Enrollment

Grade	2002-03	2003-04	2004-05	2005-06	2006-07	2007-08	2008-09	2009-10	2010-11	2011-12
K	64	58	69	69	68	76	57	85	72	94
1	48	65	74	87	71	67	76	68	87	81
2	76	58	79	75	78	80	74	77	69	90
3	66	74	75	79	80	79	93	79	83	64
4	59	73	71	75	84	77	77	78	77	88
5	59	59	66	84	75	74	82	79	78	76
K - 5 Total	372	387	434	469	456	453	459	466	466	493

Source: Williamsburg-James City County School District

James River Elementary School Projected Enrollment

Grade	2012-13	2013-14	2014-15	2015-16	2016-17	2017-18	2018-19	2019-20	2020-21	2021-22
K	94	90	97	97	95	95	95	95	95	95
1	78	90	86	93	93	91	91	91	91	91
2	94	88	103	98	105	105	103	103	103	103
3	66	68	64	75	71	77	76	75	75	75
4	89	93	96	91	105	100	108	108	106	106
5	80	79	83	85	80	93	89	96	95	93
K - 5 Total	501	508	529	539	549	561	562	568	565	563

Source: DeJONG-HEALY

Williamsburg-James City County Public Schools

Stonehouse Elementary School

Historical Enrollment

Grade	2002-03	2003-04	2004-05	2005-06	2006-07	2007-08	2008-09	2009-10	2010-11	2011-12
K	77	85	97	103	117	111	113	139	95	90
1	67	79	96	109	115	131	116	128	111	95
2	93	68	89	97	121	122	136	135	128	104
3	97	99	78	95	109	128	134	145	108	133
4	89	98	112	93	110	115	133	142	119	109
5	79	96	110	108	103	131	130	142	115	116
K - 5 Total	502	525	582	605	675	738	762	831	676	647

Source: Williamsburg-James City County School District

Stonehouse Elementary School

Projected Enrollment

Grade	2012-13	2013-14	2014-15	2015-16	2016-17	2017-18	2018-19	2019-20	2020-21	2021-22
K	90	86	93	93	91	91	91	91	91	91
1	91	106	101	109	109	106	106	106	106	106
2	108	102	119	113	122	121	119	119	119	119
3	137	141	133	155	147	159	158	155	155	155
4	110	116	119	112	130	124	134	133	131	131
5	122	120	126	129	122	142	135	146	145	142
K - 5 Total	658	671	691	711	721	743	743	750	747	744

Source: DeJONG-HEALY

Williamsburg-James City County Public Schools

Matoaka Elementary School

Historical Enrollment

Grade	2002-03	2003-04	2004-05	2005-06	2006-07	2007-08	2008-09	2009-10	2010-11	2011-12
K						96	103	103	108	122
1						98	116	103	119	118
2						88	114	119	113	124
3						112	102	118	132	126
4						94	131	106	118	128
5						101	104	140	124	114
K - 5 Total						589	670	689	714	732

Matoaka Elementary School

Projected Enrollment

Grade	2012-13	2013-14	2014-15	2015-16	2016-17	2017-18	2018-19	2019-20	2020-21	2021-22
K	122	116	126	125	123	123	123	123	123	123
1	113	132	125	135	135	132	132	132	132	132
2	129	122	141	134	145	145	142	142	142	142
3	130	133	126	146	139	150	150	147	147	147
4	130	136	139	131	153	145	157	157	153	153
5	120	118	124	127	120	140	133	143	143	140
K - 5 Total	744	757	781	798	815	835	837	844	840	837

Source: DeJONG-HEALY

Williamsburg-James City County Public Schools

Blayton Elementary School

Historical Enrollment

Grade	2002-03	2003-04	2004-05	2005-06	2006-07	2007-08	2008-09	2009-10	2010-11	2011-12
K									57	77
1									72	66
2									54	74
3									74	61
4									79	76
5									84	79
K - 5 Total									420	433

Source: Williamsburg-James City County School District

Blayton Elementary School

Projected Enrollment

Grade	2012-13	2013-14	2014-15	2015-16	2016-17	2017-18	2018-19	2019-20	2020-21	2021-22
K	77	74	79	79	78	78	78	78	78	78
1	63	74	70	76	76	74	74	74	74	74
2	77	73	85	80	87	87	85	85	85	85
3	63	65	61	71	68	73	73	71	71	71
4	77	81	83	78	91	87	93	93	91	91
5	83	82	86	88	83	97	92	99	99	97
K - 5 Total	440	449	464	472	483	496	495	500	498	496

Source: DeJONG-HEALY

Berkeley Middle School

Historical Enrollment

Grade	2002-03	2003-04	2004-05	2005-06	2006-07	2007-08	2008-09	2009-10	2010-11	2011-12
6	238	272	273	289	274	258	259	294	314	300
7	264	274	291	285	295	270	269	274	296	326
8	247	270	287	302	296	297	276	282	276	310
6 - 8 Total	749	816	851	876	865	825	804	850	886	936

Source: Williamsburg-James City County School District

Berkeley Middle School

Projected Enrollment

Grade	2012-13	2013-14	2014-15	2015-16	2016-17	2017-18	2018-19	2019-20	2020-21	2021-22
6	293	302	298	312	321	302	352	335	361	360
7	332	318	328	323	338	348	328	382	363	392
8	308	339	324	334	330	345	355	335	389	370
6 - 8 Total	933	959	950	969	989	995	1,035	1,052	1,113	1,122

Source: DeJONG-HEALY

Williamsburg-James City County Public Schools

Toano Middle School

Historical Enrollment

Grade	2002-03	2003-04	2004-05	2005-06	2006-07	2007-08	2008-09	2009-10	2010-11	2011-12
6	254	251	254	302	279	249	284	292	241	244
7	250	271	262	275	297	287	255	289	221	233
8	254	261	295	254	282	289	300	278	215	228
6 - 8 Total	758	783	811	831	858	825	839	859	677	705

Source: Williamsburg-James City County School District

Toano Middle School

Projected Enrollment

Grade	2012-13	2013-14	2014-15	2015-16	2016-17	2017-18	2018-19	2019-20	2020-21	2021-22
6	239	246	236	254	261	246	286	272	294	293
7	238	227	209	231	242	249	235	273	259	280
8	226	249	240	246	243	254	261	246	287	272
6 - 8 Total	703	722	685	731	746	749	782	791	840	845

Source: DeJONG-HEALY

Hornsby Middle School

Historical Enrollment

Grade	2002-03	2003-04	2004-05	2005-06	2006-07	2007-08	2008-09	2009-10	2010-11	2011-12
6									306	301
7									296	321
8									288	297
6 - 8 Total									890	919

Source: Williamsburg-James City County School District

Hornsby Middle School

Projected Enrollment

Grade	2012-13	2013-14	2014-15	2015-16	2016-17	2017-18	2018-19	2019-20	2020-21	2021-22
6	294	303	299	313	322	303	353	336	362	361
7	327	313	323	318	333	342	323	376	357	386
8	295	325	311	320	316	331	340	321	373	355
6 - 8 Total	916	941	933	951	971	976	1,016	1,033	1,092	1,102

Source: DeJONG-HEALY

Williamsburg-James City County Public Schools

James Blair Middle School

Historical Enrollment

Grade	2002-03	2003-04	2004-05	2005-06	2006-07	2007-08	2008-09	2009-10	2010-11	2011-12
6	191	185	203	219	215	210	206	202		
7	212	211	181	205	228	218	224	219		
8	177	211	199	204	215	249	210	221		
6 - 8 Total	580	607	583	628	658	677	640	642		

Source: Williamsburg-James City County School District

Lafayette High School

Historical Enrollment

Grade	2002-03	2003-04	2004-05	2005-06	2006-07	2007-08	2008-09	2009-10	2010-11	2011-12
9	398	403	435	449	439	280	314	299	285	255
10	380	384	422	451	441	299	284	310	298	288
11	350	338	349	373	430	272	251	271	272	265
12	290	353	330	351	353	415	250	232	258	269
9 - 12 Total	1,418	1,478	1,536	1,624	1,663	1,266	1,099	1,112	1,113	1,077

Source: Williamsburg-James City County School District

Lafayette High School

Projected Enrollment

Grade	2012-13	2013-14	2014-15	2015-16	2016-17	2017-18	2018-19	2019-20	2020-21	2021-22
9	273	291	320	306	316	311	326	335	316	368
10	290	296	315	347	332	342	338	353	363	342
11	267	259	264	281	309	296	305	301	315	324
12	263	258	250	255	271	299	286	295	291	304
9 - 12 Total	1,093	1,104	1,149	1,189	1,228	1,248	1,255	1,284	1,285	1,338

Source: DeJONG-HEALY

Williamsburg-James City County Public Schools

Jamestown High School

Historical Enrollment

Grade	2002-03	2003-04	2004-05	2005-06	2006-07	2007-08	2008-09	2009-10	2010-11	2011-12
9	370	404	448	459	454	323	331	328	311	306
10	323	358	379	427	440	324	326	312	320	297
11	279	298	328	320	382	327	294	311	287	295
12	284	271	296	318	315	373	310	284	300	288
9 - 12 Total	1,256	1,331	1,451	1,524	1,591	1,347	1,261	1,235	1,218	1,186

Source: Williamsburg-James City County School District

Jamestown High School

Projected Enrollment

Grade	2012-13	2013-14	2014-15	2015-16	2016-17	2017-18	2018-19	2019-20	2020-21	2021-22
9	328	349	384	367	379	374	391	402	379	441
10	299	306	325	358	342	353	348	364	374	353
11	297	288	294	313	344	330	340	335	351	360
12	281	276	268	273	290	320	306	316	311	326
9 - 12 Total	1,205	1,219	1,271	1,311	1,355	1,377	1,385	1,417	1,415	1,480

Source: DeJONG-HEALY

Warhill High School

Historical Enrollment

Grade	2002-03	2003-04	2004-05	2005-06	2006-07	2007-08	2008-09	2009-10	2010-11	2011-12
9						295	311	312	295	289
10						264	291	316	286	286
11						194	240	270	294	273
12							195	232	275	288
9 - 12 Total						753	1,037	1,130	1,150	1,136

Source: Williamsburg-James City County School District

Warhill High School

Projected Enrollment

Grade	2012-13	2013-14	2014-15	2015-16	2016-17	2017-18	2018-19	2019-20	2020-21	2021-22
9	310	329	362	347	358	353	369	379	358	417
10	288	294	313	344	330	340	335	351	361	340
11	275	267	272	289	319	305	314	310	325	334
12	281	276	268	273	290	320	306	316	311	326
9 - 12 Total	1,154	1,166	1,215	1,253	1,297	1,318	1,324	1,356	1,355	1,417

Source: DeJONG-HEALY

Williamsburg-James City County Public Schools

In addition to the recommended enrollment projection presented in this report, following are low, moderate, and high enrollment projections developed based on the cohort survival method. The following defines, in terms of economy and housing, the differences between the three projections.

Low Projection

- Higher inflation/interest rates
- Decline in new housing
- Decline in live births

Moderate Projection

- Moderate inflation/interest rates
- Moderate level of new housing
- Live births remain steady

High Projection

- Low inflation/interest rates
- High level of new housing
- Increase in live births

The recommended, or “most likely,” projection falls slightly below the moderate projection. This is due in large part to the decline in the housing market.

The projections range from a low of 11,607 students to a high of 14,134 students in the 2021-22 school year.

Williamsburg-James City County Public Schools

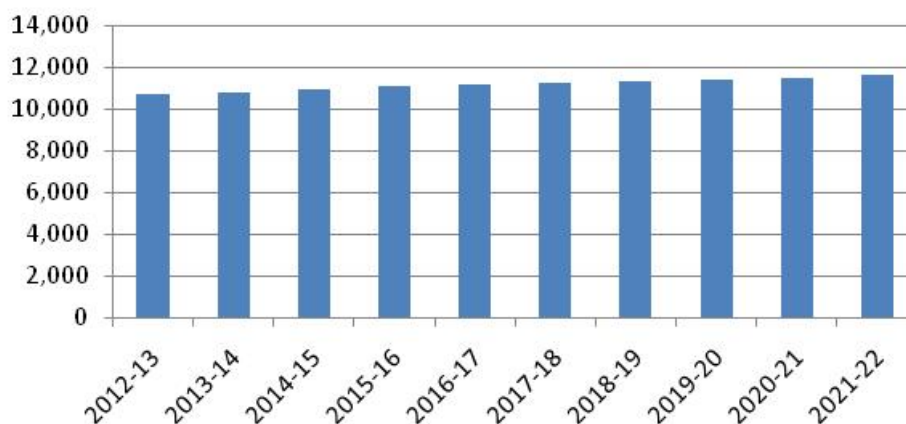
Low Projection

Williamsburg-James City County School District Projected Enrollment - Low

Grade	2012-13	2013-14	2014-15	2015-16	2016-17	2017-18	2018-19	2019-20	2020-21	2021-22
K	746	806	806	825	806	806	806	806	806	806
1	833	778	838	836	858	836	836	836	836	836
2	771	859	801	863	862	884	861	861	861	861
3	802	802	883	825	890	886	910	884	884	884
4	812	812	812	897	838	903	902	927	901	901
5	806	818	818	818	904	845	911	908	932	908
K - 5 Total	4,770	4,875	4,958	5,064	5,158	5,160	5,226	5,222	5,220	5,196
6	810	803	813	817	817	904	842	910	907	932
7	861	827	824	834	834	834	924	861	929	926
8	889	870	825	829	841	842	841	933	869	938
6 - 8 Total	2,560	2,500	2,462	2,480	2,492	2,580	2,607	2,704	2,705	2,796
9	929	990	970	931	923	938	939	939	1,039	970
10	824	901	961	941	904	896	910	910	910	1,008
11	797	754	824	878	861	826	819	833	833	833
12	804	772	728	798	848	833	798	792	804	804
9 - 12 Total	3,354	3,417	3,483	3,548	3,536	3,493	3,466	3,474	3,586	3,615
Grand Total	10,684	10,792	10,903	11,092	11,186	11,233	11,299	11,400	11,511	11,607

Source: DeJONG-HEALY

Williamsburg-James City County School District Projected Enrollment - Low



Williamsburg-James City County Public Schools

Baker Elementary School Projected Enrollment - Low

Grade	2012-13	2013-14	2014-15	2015-16	2016-17	2017-18	2018-19	2019-20	2020-21	2021-22
K	79	85	85	87	85	85	85	85	85	85
1	91	85	92	92	94	92	92	92	92	92
2	75	84	78	84	84	86	84	84	84	84
3	72	72	79	74	80	79	82	79	79	79
4	99	99	99	110	102	110	110	113	110	110
5	99	101	101	101	112	104	113	112	115	112
K - 5 Total	515	526	534	548	557	556	566	565	565	562

Source: DeJONG-HEALY

Byrd Elementary School Projected Enrollment - Low

Grade	2012-13	2013-14	2014-15	2015-16	2016-17	2017-18	2018-19	2019-20	2020-21	2021-22
K	73	79	79	81	79	79	79	79	79	79
1	94	87	94	94	97	94	94	94	94	94
2	65	72	68	73	73	75	73	73	73	73
3	80	80	88	82	89	88	91	88	88	88
4	78	78	78	86	80	86	86	89	86	86
5	79	80	80	80	88	83	89	89	91	89
K - 5 Total	469	476	487	496	506	505	512	512	511	509

Source: DeJONG-HEALY

Montague Elementary School Projected Enrollment - Low

Grade	2012-13	2013-14	2014-15	2015-16	2016-17	2017-18	2018-19	2019-20	2020-21	2021-22
K	68	73	73	75	73	73	73	73	73	73
1	68	64	69	68	70	68	68	68	68	68
2	78	87	81	87	87	90	87	87	87	87
3	78	78	86	80	86	86	88	86	86	86
4	72	72	72	79	74	80	79	82	79	79
5	73	74	74	74	82	76	82	82	84	82
K - 5 Total	437	448	455	463	472	473	477	478	477	475

Source: DeJONG-HEALY

Norge Elementary School Projected Enrollment - Low

Grade	2012-13	2013-14	2014-15	2015-16	2016-17	2017-18	2018-19	2019-20	2020-21	2021-22
K	85	92	92	94	92	92	92	92	92	92
1	103	96	103	103	106	103	103	103	103	103
2	84	94	87	94	94	96	94	94	94	94
3	90	90	99	92	100	100	102	99	99	99
4	97	97	97	107	100	108	108	111	108	108
5	84	85	85	85	94	88	95	94	97	94
K - 5 Total	543	554	563	575	586	587	594	593	593	590

Source: DeJONG-HEALY

Williamsburg-James City County Public Schools

Whaley Elementary School

Projected Enrollment - Low

Grade	2012-13	2013-14	2014-15	2015-16	2016-17	2017-18	2018-19	2019-20	2020-21	2021-22
K	83	90	90	92	90	90	90	90	90	90
1	76	71	76	76	78	76	76	76	76	76
2	77	86	80	86	86	88	86	86	86	86
3	94	94	104	97	104	104	107	104	104	104
4	57	57	57	63	59	64	64	65	64	64
5	88	89	89	89	98	92	99	99	101	99
K - 5 Total	475	487	496	503	515	514	522	520	521	519

Source: DeJONG-HEALY

James River Elementary School

Projected Enrollment - Low

Grade	2012-13	2013-14	2014-15	2015-16	2016-17	2017-18	2018-19	2019-20	2020-21	2021-22
K	88	95	95	97	95	95	95	95	95	95
1	90	84	91	91	93	91	91	91	91	91
2	90	100	93	101	101	103	100	100	100	100
3	65	65	71	67	72	72	74	72	72	72
4	90	90	90	99	93	100	100	102	100	100
5	76	77	77	77	85	79	86	85	88	85
K - 5 Total	499	511	517	532	539	540	546	545	546	543

Source: DeJONG-HEALY

Stonehouse Elementary School

Projected Enrollment - Low

Grade	2012-13	2013-14	2014-15	2015-16	2016-17	2017-18	2018-19	2019-20	2020-21	2021-22
K	84	91	91	93	91	91	91	91	91	91
1	106	99	107	106	109	106	106	106	106	106
2	104	116	108	116	116	119	116	116	116	116
3	134	134	148	138	149	148	152	148	148	148
4	111	111	111	123	115	124	124	127	123	123
5	115	117	117	117	130	121	130	130	134	130
K - 5 Total	654	668	682	693	710	709	719	718	718	714

Source: DeJONG-HEALY

Matoaka Elementary School

Projected Enrollment - Low

Grade	2012-13	2013-14	2014-15	2015-16	2016-17	2017-18	2018-19	2019-20	2020-21	2021-22
K	114	123	123	126	123	123	123	123	123	123
1	131	123	132	132	135	132	132	132	132	132
2	124	138	129	139	138	142	138	138	138	138
3	127	127	140	131	141	141	144	140	140	140
4	130	130	130	144	135	145	145	149	145	145
5	113	115	115	115	127	119	128	128	131	128
K - 5 Total	739	756	769	787	799	802	810	810	809	806

Source: DeJONG-HEALY

Williamsburg-James City County Public Schools

Blayton Elementary School

Projected Enrollment - Low

Grade	2012-13	2013-14	2014-15	2015-16	2016-17	2017-18	2018-19	2019-20	2020-21	2021-22
K	72	78	78	80	78	78	78	78	78	78
1	74	69	74	74	76	74	74	74	74	74
2	74	82	77	83	83	85	83	83	83	83
3	62	62	68	64	69	68	70	68	68	68
4	78	78	78	86	80	86	86	89	86	86
5	79	80	80	80	88	83	89	89	91	89
K - 5 Total	439	449	455	467	474	474	480	481	480	478

Source: DeJONG-HEALY

Berkeley Middle School

Projected Enrollment - Low

Grade	2012-13	2013-14	2014-15	2015-16	2016-17	2017-18	2018-19	2019-20	2020-21	2021-22
6	288	285	290	290	290	321	299	323	322	331
7	319	306	304	309	309	309	342	319	344	343
8	330	323	310	308	312	313	312	346	323	348
6 - 8 Total	937	914	904	907	911	943	953	988	989	1,022

Source: DeJONG-HEALY

Toano Middle School

Projected Enrollment - Low

Grade	2012-13	2013-14	2014-15	2015-16	2016-17	2017-18	2018-19	2019-20	2020-21	2021-22
6	234	232	232	236	236	261	243	263	262	269
7	228	219	221	221	221	221	245	228	246	245
8	243	238	218	226	230	230	230	255	237	256
6 - 8 Total	705	689	671	683	687	712	718	746	745	770

Source: DeJONG-HEALY

Hornsby Middle School

Projected Enrollment - Low

Grade	2012-13	2013-14	2014-15	2015-16	2016-17	2017-18	2018-19	2019-20	2020-21	2021-22
6	288	286	291	291	291	322	300	324	323	332
7	314	302	299	304	304	304	337	314	339	338
8	316	309	297	295	299	299	299	332	309	334
6 - 8 Total	918	897	887	890	894	925	936	970	971	1,004

Source: DeJONG-HEALY

Williamsburg-James City County Public Schools

Lafayette High School Projected Enrollment - Low

Grade	2012-13	2013-14	2014-15	2015-16	2016-17	2017-18	2018-19	2019-20	2020-21	2021-22
9	279	297	291	279	277	281	282	282	312	291
10	272	298	318	311	299	296	301	301	301	333
11	254	240	262	279	274	263	261	265	265	265
12	256	246	232	254	270	265	254	252	256	256
9 - 12 Total	1,061	1,081	1,103	1,123	1,120	1,105	1,098	1,100	1,134	1,145

Source: DeJONG-HEALY

Jamestown High School Projected Enrollment - Low

Grade	2012-13	2013-14	2014-15	2015-16	2016-17	2017-18	2018-19	2019-20	2020-21	2021-22
9	334	356	349	335	332	338	338	338	374	349
10	281	307	328	321	308	306	310	310	310	344
11	282	267	292	311	305	292	290	295	295	295
12	274	263	248	272	289	284	272	270	274	274
9 - 12 Total	1,171	1,193	1,217	1,239	1,234	1,220	1,210	1,213	1,253	1,262

Source: DeJONG-HEALY

Warhill High School Projected Enrollment - Low

Grade	2012-13	2013-14	2014-15	2015-16	2016-17	2017-18	2018-19	2019-20	2020-21	2021-22
9	316	337	330	317	314	319	319	319	353	330
10	271	296	315	309	297	294	299	299	299	331
11	261	247	270	288	282	271	268	273	273	273
12	274	263	248	272	289	284	272	270	274	274
9 - 12 Total	1,122	1,143	1,163	1,186	1,182	1,168	1,158	1,161	1,199	1,208

Source: DeJONG-HEALY

Williamsburg-James City County Public Schools

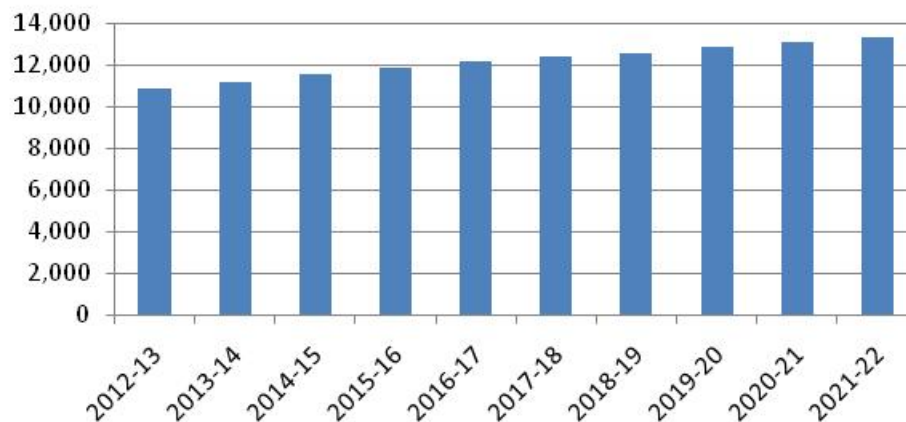
Moderate Projection

Williamsburg-James City County School District Projected Enrollment - Moderate

Grade	2012-13	2013-14	2014-15	2015-16	2016-17	2017-18	2018-19	2019-20	2020-21	2021-22
K	786	847	844	866	842	842	842	842	842	842
1	851	832	898	895	919	895	895	895	895	895
2	785	889	869	937	935	959	935	935	935	935
3	813	820	929	908	981	978	1,004	977	977	977
4	823	838	847	958	938	1,012	1,010	1,036	1,007	1,007
5	820	847	860	873	985	964	1,042	1,038	1,066	1,036
K - 5 Total	4,878	5,073	5,247	5,437	5,600	5,650	5,728	5,723	5,722	5,692
6	820	831	852	870	881	997	975	1,053	1,050	1,078
7	872	848	868	886	899	913	1,031	1,009	1,089	1,086
8	903	897	870	882	908	925	937	1,059	1,037	1,119
6 - 8 Total	2,595	2,576	2,590	2,638	2,688	2,835	2,943	3,121	3,176	3,283
9	961	1,041	1,033	1,004	1,017	1,047	1,066	1,080	1,221	1,194
10	832	941	1,020	1,012	983	995	1,026	1,044	1,056	1,196
11	808	771	872	946	937	912	923	952	968	980
12	818	795	760	857	930	924	898	909	936	951
9 - 12 Total	3,419	3,548	3,685	3,819	3,867	3,878	3,913	3,985	4,181	4,321
Grand Total	10,892	11,197	11,522	11,894	12,155	12,363	12,584	12,829	13,079	13,296

Source: DeJONG-HEALY

Williamsburg-James City County School District Projected Enrollment - Moderate



Williamsburg-James City County Public Schools

Baker Elementary School

Projected Enrollment - Moderate

Grade	2012-13	2013-14	2014-15	2015-16	2016-17	2017-18	2018-19	2019-20	2020-21	2021-22
K	83	89	89	91	89	89	89	89	89	89
1	93	91	99	98	101	98	98	98	98	98
2	76	86	85	91	91	93	91	91	91	91
3	73	74	83	81	88	88	90	88	88	88
4	100	102	103	117	114	123	123	126	123	123
5	101	105	106	108	122	119	129	128	132	128
K - 5 Total	526	547	565	586	605	610	620	620	621	617

Source: DeJONG-HEALY

Byrd Elementary School

Projected Enrollment - Moderate

Grade	2012-13	2013-14	2014-15	2015-16	2016-17	2017-18	2018-19	2019-20	2020-21	2021-22
K	77	83	83	85	83	83	83	83	83	83
1	96	94	101	101	103	101	101	101	101	101
2	66	75	73	79	79	81	79	79	79	79
3	81	82	93	91	98	97	100	97	97	97
4	79	80	81	92	90	97	97	99	96	96
5	80	83	84	85	96	94	102	101	104	101
K - 5 Total	479	497	515	533	549	553	562	560	560	557

Source: DeJONG-HEALY

Montague Elementary School

Projected Enrollment - Moderate

Grade	2012-13	2013-14	2014-15	2015-16	2016-17	2017-18	2018-19	2019-20	2020-21	2021-22
K	71	77	76	78	76	76	76	76	76	76
1	70	68	73	73	75	73	73	73	73	73
2	80	90	88	95	95	97	95	95	95	95
3	79	80	90	88	95	95	98	95	95	95
4	73	74	75	84	83	89	89	91	89	89
5	74	76	78	79	89	87	94	94	96	94
K - 5 Total	447	465	480	497	513	517	525	524	524	522

Source: DeJONG-HEALY

Norge Elementary School

Projected Enrollment - Moderate

Grade	2012-13	2013-14	2014-15	2015-16	2016-17	2017-18	2018-19	2019-20	2020-21	2021-22
K	90	97	96	99	96	96	96	96	96	96
1	105	102	111	110	113	110	110	110	110	110
2	86	97	95	102	102	105	102	102	102	102
3	91	92	104	102	110	110	113	110	110	110
4	98	100	101	114	112	121	121	124	120	120
5	85	88	89	91	102	100	108	108	111	108
K - 5 Total	555	576	596	618	635	642	650	650	649	646

Source: DeJONG-HEALY

Williamsburg-James City County Public Schools

Whaley Elementary School Projected Enrollment - Moderate

Grade	2012-13	2013-14	2014-15	2015-16	2016-17	2017-18	2018-19	2019-20	2020-21	2021-22
K	88	94	94	97	94	94	94	94	94	94
1	78	76	82	82	84	82	82	82	82	82
2	78	89	87	94	93	96	93	93	93	93
3	95	96	109	107	115	115	118	114	114	114
4	58	59	60	68	66	71	71	73	71	71
5	89	92	94	95	107	105	113	113	116	113
K - 5 Total	486	506	526	543	559	563	571	569	570	567

Source: DeJONG-HEALY

James River Elementary School Projected Enrollment - Moderate

Grade	2012-13	2013-14	2014-15	2015-16	2016-17	2017-18	2018-19	2019-20	2020-21	2021-22
K	92	100	100	102	99	99	99	99	99	99
1	92	90	97	97	100	97	97	97	97	97
2	92	104	101	109	109	112	109	109	109	109
3	66	66	75	73	79	79	81	79	79	79
4	91	93	94	106	104	112	112	115	112	112
5	77	80	81	82	93	91	98	98	100	97
K - 5 Total	510	533	548	569	584	590	596	597	596	593

Source: DeJONG-HEALY

Stonehouse Elementary School Projected Enrollment - Moderate

Grade	2012-13	2013-14	2014-15	2015-16	2016-17	2017-18	2018-19	2019-20	2020-21	2021-22
K	89	96	95	98	95	95	95	95	95	95
1	108	106	114	114	117	114	114	114	114	114
2	106	120	117	126	126	129	126	126	126	126
3	136	137	156	152	164	164	168	164	164	164
4	113	115	116	131	128	139	138	142	138	138
5	118	121	123	125	141	138	149	149	153	148
K - 5 Total	670	695	721	746	771	779	790	790	790	785

Source: DeJONG-HEALY

Matoaka Elementary School Projected Enrollment - Moderate

Grade	2012-13	2013-14	2014-15	2015-16	2016-17	2017-18	2018-19	2019-20	2020-21	2021-22
K	120	129	129	132	129	129	129	129	129	129
1	134	131	142	141	145	141	141	141	141	141
2	126	143	140	151	150	154	150	150	150	150
3	129	130	147	144	156	155	159	155	155	155
4	132	135	136	154	151	163	162	167	162	162
5	116	119	121	123	139	136	147	146	150	146
K - 5 Total	757	787	815	845	870	878	888	888	887	883

Source: DeJONG-HEALY

Williamsburg-James City County Public Schools

Blayton Elementary School Projected Enrollment - Moderate

Grade	2012-13	2013-14	2014-15	2015-16	2016-17	2017-18	2018-19	2019-20	2020-21	2021-22
K	76	82	82	84	81	81	81	81	81	81
1	75	74	79	79	81	79	79	79	79	79
2	75	85	83	90	90	92	90	90	90	90
3	63	63	72	70	76	75	77	75	75	75
4	79	80	81	92	90	97	97	99	96	96
5	80	83	84	85	96	94	102	101	104	101
K - 5 Total	448	467	481	500	514	518	526	525	525	522

Source: DeJONG-HEALY

Berkeley Middle School Projected Enrollment - Moderate

Grade	2012-13	2013-14	2014-15	2015-16	2016-17	2017-18	2018-19	2019-20	2020-21	2021-22
6	291	295	304	309	313	354	346	374	373	383
7	323	314	318	328	333	338	382	374	403	402
8	335	333	323	327	337	343	348	393	385	415
6 - 8 Total	949	942	945	964	983	1,035	1,076	1,141	1,161	1,200

Source: DeJONG-HEALY

Toano Middle School Projected Enrollment - Moderate

Grade	2012-13	2013-14	2014-15	2015-16	2016-17	2017-18	2018-19	2019-20	2020-21	2021-22
6	237	240	243	251	254	288	282	304	303	311
7	231	225	237	235	238	242	273	267	289	288
8	247	245	237	241	248	253	256	289	283	306
6 - 8 Total	715	710	717	727	740	783	811	860	875	905

Source: DeJONG-HEALY

Hornsby Middle School Projected Enrollment - Moderate

Grade	2012-13	2013-14	2014-15	2015-16	2016-17	2017-18	2018-19	2019-20	2020-21	2021-22
6	292	296	305	310	314	355	347	375	374	384
7	318	309	313	323	328	333	376	368	397	396
8	321	319	310	314	323	329	333	377	369	398
6 - 8 Total	931	924	928	947	965	1,017	1,056	1,120	1,140	1,178

Source: DeJONG-HEALY

Williamsburg-James City County Public Schools

Lafayette High School

Projected Enrollment - Moderate

Grade	2012-13	2013-14	2014-15	2015-16	2016-17	2017-18	2018-19	2019-20	2020-21	2021-22
9	288	312	310	301	305	314	320	324	366	358
10	275	311	337	335	325	329	339	345	349	395
11	257	245	277	301	298	290	294	303	308	312
12	260	253	242	273	296	294	286	289	298	303
9 - 12 Total	1,080	1,121	1,166	1,210	1,224	1,227	1,239	1,261	1,321	1,368

Source: DeJONG-HEALY

Jamestown High School

Projected Enrollment - Moderate

Grade	2012-13	2013-14	2014-15	2015-16	2016-17	2017-18	2018-19	2019-20	2020-21	2021-22
9	346	375	372	362	366	377	384	389	440	430
10	284	321	348	345	335	339	350	356	360	408
11	286	273	309	335	332	323	327	337	343	347
12	279	271	259	292	317	315	306	310	319	324
9 - 12 Total	1,195	1,240	1,288	1,334	1,350	1,354	1,367	1,392	1,462	1,509

Source: DeJONG-HEALY

Warhill High School

Projected Enrollment - Moderate

Grade	2012-13	2013-14	2014-15	2015-16	2016-17	2017-18	2018-19	2019-20	2020-21	2021-22
9	327	354	351	341	346	356	362	367	415	406
10	273	309	335	332	323	327	337	343	347	393
11	265	253	286	310	307	299	302	312	317	321
12	279	271	259	292	317	315	306	310	319	324
9 - 12 Total	1,144	1,187	1,231	1,275	1,293	1,297	1,307	1,332	1,398	1,444

Source: DeJONG-HEALY

Williamsburg-James City County Public Schools

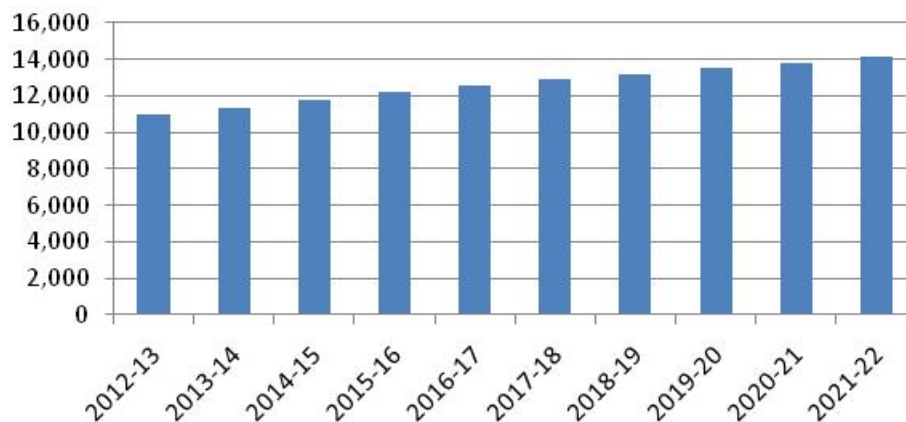
High Projection

Williamsburg-James City County School District Projected Enrollment - High

Grade	2012-13	2013-14	2014-15	2015-16	2016-17	2017-18	2018-19	2019-20	2020-21	2021-22
K	816	881	878	902	877	877	877	877	877	877
1	856	870	940	937	962	936	936	936	936	936
2	791	898	915	988	985	1,009	984	984	984	984
3	813	828	941	960	1,035	1,032	1,060	1,030	1,030	1,030
4	825	838	857	973	991	1,069	1,066	1,096	1,065	1,065
5	821	850	866	882	1,003	1,021	1,102	1,098	1,128	1,096
K - 5 Total	4,922	5,165	5,397	5,642	5,853	5,944	6,025	6,021	6,020	5,988
6	831	842	872	885	904	1,026	1,045	1,129	1,126	1,156
7	880	866	893	907	924	941	1,070	1,091	1,177	1,174
8	909	909	900	908	937	956	973	1,107	1,128	1,217
6 - 8 Total	2,620	2,617	2,665	2,700	2,765	2,923	3,088	3,327	3,431	3,547
9	967	1,055	1,056	1,039	1,053	1,087	1,108	1,130	1,283	1,308
10	834	948	1,035	1,035	1,019	1,032	1,067	1,086	1,108	1,258
11	814	777	884	964	965	949	962	994	1,013	1,033
12	821	804	766	874	953	953	939	951	983	1,000
9 - 12 Total	3,436	3,584	3,741	3,912	3,990	4,021	4,076	4,161	4,387	4,599
Grand Total	10,978	11,366	11,803	12,254	12,608	12,888	13,189	13,509	13,838	14,134

Source: DeJONG-HEALY

Williamsburg-James City County School District Projected Enrollment - High



Williamsburg-James City County Public Schools

Baker Elementary School Projected Enrollment - High

Grade	2012-13	2013-14	2014-15	2015-16	2016-17	2017-18	2018-19	2019-20	2020-21	2021-22
K	86	93	93	95	93	93	93	93	93	93
1	94	96	103	103	106	103	103	103	103	103
2	77	87	89	96	96	98	96	96	96	96
3	73	74	84	86	93	92	95	92	92	92
4	101	102	104	119	121	130	130	134	130	130
5	102	105	107	109	124	126	136	136	139	136
K - 5 Total	533	557	580	608	633	642	653	654	653	650

Source: DeJONG-HEALY

Byrd Elementary School Projected Enrollment - High

Grade	2012-13	2013-14	2014-15	2015-16	2016-17	2017-18	2018-19	2019-20	2020-21	2021-22
K	80	86	86	88	86	86	86	86	86	86
1	96	98	106	105	108	105	105	105	105	105
2	67	76	77	83	83	85	83	83	83	83
3	81	83	94	96	103	103	106	103	103	103
4	79	80	82	93	95	102	102	105	102	102
5	80	83	85	86	98	100	108	107	110	107
K - 5 Total	483	506	530	551	573	581	590	589	589	586

Source: DeJONG-HEALY

Montague Elementary School Projected Enrollment - High

Grade	2012-13	2013-14	2014-15	2015-16	2016-17	2017-18	2018-19	2019-20	2020-21	2021-22
K	74	80	79	82	79	79	79	79	79	79
1	70	71	77	77	79	77	77	77	77	77
2	80	91	93	100	100	102	100	100	100	100
3	79	80	91	93	101	100	103	100	100	100
4	73	74	76	86	87	94	94	97	94	94
5	74	77	78	80	91	92	99	99	102	99
K - 5 Total	450	473	494	518	537	544	552	552	552	549

Source: DeJONG-HEALY

Norge Elementary School Projected Enrollment - High

Grade	2012-13	2013-14	2014-15	2015-16	2016-17	2017-18	2018-19	2019-20	2020-21	2021-22
K	93	101	100	103	100	100	100	100	100	100
1	105	107	116	115	118	115	115	115	115	115
2	86	98	100	108	107	110	107	107	107	107
3	91	93	106	108	116	116	119	116	116	116
4	98	100	102	116	118	128	127	131	127	127
5	85	88	90	92	104	106	114	114	117	114
K - 5 Total	558	587	614	642	663	675	682	683	682	679

Source: DeJONG-HEALY

Williamsburg-James City County Public Schools

Whaley Elementary School

Projected Enrollment - High

Grade	2012-13	2013-14	2014-15	2015-16	2016-17	2017-18	2018-19	2019-20	2020-21	2021-22
K	91	98	98	101	98	98	98	98	98	98
1	78	79	86	85	88	85	85	85	85	85
2	79	90	91	99	98	101	98	98	98	98
3	95	97	110	112	121	121	124	121	121	121
4	58	59	61	69	70	76	75	77	75	75
5	89	92	94	96	109	111	120	120	123	119
K - 5 Total	490	515	540	562	584	592	600	599	600	596

Source: DeJONG-HEALY

James River Elementary School

Projected Enrollment - High

Grade	2012-13	2013-14	2014-15	2015-16	2016-17	2017-18	2018-19	2019-20	2020-21	2021-22
K	96	104	104	106	103	103	103	103	103	103
1	93	94	102	102	104	101	101	101	101	101
2	92	105	107	115	115	118	115	115	115	115
3	66	67	76	78	84	83	86	83	83	83
4	91	93	95	108	110	118	118	121	118	118
5	77	80	81	83	94	96	104	103	106	103
K - 5 Total	515	543	565	592	610	619	627	626	626	623

Source: DeJONG-HEALY

Stonehouse Elementary School

Projected Enrollment - High

Grade	2012-13	2013-14	2014-15	2015-16	2016-17	2017-18	2018-19	2019-20	2020-21	2021-22
K	92	99	99	102	99	99	99	99	99	99
1	109	111	119	119	122	119	119	119	119	119
2	107	121	123	133	133	136	133	133	133	133
3	136	139	158	161	173	173	177	173	173	173
4	113	115	117	133	136	147	146	150	146	146
5	118	122	124	126	144	146	158	157	162	157
K - 5 Total	675	707	740	774	807	820	832	831	832	827

Source: DeJONG-HEALY

Matoaka Elementary School

Projected Enrollment - High

Grade	2012-13	2013-14	2014-15	2015-16	2016-17	2017-18	2018-19	2019-20	2020-21	2021-22
K	125	135	134	138	134	134	134	134	134	134
1	135	137	148	148	152	148	148	148	148	148
2	127	144	147	159	158	162	158	158	158	158
3	129	131	149	152	164	164	168	163	163	163
4	133	135	138	156	159	172	172	176	171	171
5	116	120	122	124	141	144	155	155	159	154
K - 5 Total	765	802	838	877	908	924	935	934	933	928

Source: DeJONG-HEALY

Williamsburg-James City County Public Schools

Blayton Elementary School Projected Enrollment - High

Grade	2012-13	2013-14	2014-15	2015-16	2016-17	2017-18	2018-19	2019-20	2020-21	2021-22
K	79	85	85	87	85	85	85	85	85	85
1	76	77	83	83	85	83	83	83	83	83
2	76	86	88	95	95	97	94	94	94	94
3	63	64	73	74	80	80	82	79	79	79
4	79	80	82	93	95	102	102	105	102	102
5	80	83	85	86	98	100	108	107	110	107
K - 5 Total	453	475	496	518	538	547	554	553	553	550

Source: DeJONG-HEALY

Berkeley Middle School Projected Enrollment - High

Grade	2012-13	2013-14	2014-15	2015-16	2016-17	2017-18	2018-19	2019-20	2020-21	2021-22
6	295	299	309	314	321	364	371	401	400	410
7	326	321	325	336	342	349	396	404	436	435
8	338	338	332	337	348	355	361	411	419	452
6 - 8 Total	959	958	966	987	1,011	1,068	1,128	1,216	1,255	1,297

Source: DeJONG-HEALY

Toano Middle School Projected Enrollment - High

Grade	2012-13	2013-14	2014-15	2015-16	2016-17	2017-18	2018-19	2019-20	2020-21	2021-22
6	240	243	253	256	261	296	302	326	325	334
7	233	229	248	240	245	249	284	289	312	311
8	248	248	249	248	256	261	266	302	308	332
6 - 8 Total	721	720	750	744	762	806	852	917	945	977

Source: DeJONG-HEALY

Hornsby Middle School Projected Enrollment - High

Grade	2012-13	2013-14	2014-15	2015-16	2016-17	2017-18	2018-19	2019-20	2020-21	2021-22
6	296	300	310	315	322	366	372	402	401	412
7	321	316	320	331	337	343	390	398	429	428
8	323	323	319	323	333	340	346	394	401	433
6 - 8 Total	940	939	949	969	992	1,049	1,108	1,194	1,231	1,273

Source: DeJONG-HEALY

Williamsburg-James City County Public Schools

Lafayette High School Projected Enrollment - High

Grade	2012-13	2013-14	2014-15	2015-16	2016-17	2017-18	2018-19	2019-20	2020-21	2021-22
9	290	316	317	312	316	326	332	339	385	392
10	276	314	342	342	337	341	353	359	366	416
11	259	247	281	307	307	302	306	316	322	329
12	261	256	244	278	303	303	299	303	313	318
9 - 12 Total	1,086	1,133	1,184	1,239	1,263	1,272	1,290	1,317	1,386	1,455

Source: DeJONG-HEALY

Jamestown High School Projected Enrollment - High

Grade	2012-13	2013-14	2014-15	2015-16	2016-17	2017-18	2018-19	2019-20	2020-21	2021-22
9	348	380	380	374	379	391	399	407	462	471
10	284	323	353	353	347	352	364	370	378	429
11	288	275	313	341	342	336	341	352	359	366
12	280	274	261	298	325	325	320	324	335	341
9 - 12 Total	1,200	1,252	1,307	1,366	1,393	1,404	1,424	1,453	1,534	1,607

Source: DeJONG-HEALY

Warhill High School Projected Enrollment - High

Grade	2012-13	2013-14	2014-15	2015-16	2016-17	2017-18	2018-19	2019-20	2020-21	2021-22
9	329	359	359	353	358	370	377	384	436	445
10	274	311	340	340	335	339	350	357	364	413
11	267	255	290	316	316	311	315	326	332	338
12	280	274	261	298	325	325	320	324	335	341
9 - 12 Total	1,150	1,199	1,250	1,307	1,334	1,345	1,362	1,391	1,467	1,537

Source: DeJONG-HEALY

CONCLUSION

The enrollment projections presented in this report were developed using the cohort-survival methodology while incorporating housing and geographic information system data.

As with any projection, the District should pay close attention to live birth counts, enrollment in elementary schools, and in/out migration patterns. Each of these factors will have an impact on future student enrollment.

DeJONG-HEALY is pleased to have had the opportunity to provide the District with enrollment projection services. We hope this document will provide the necessary information to make informed decisions about the future of the Williamsburg-James City County Public Schools.