



Plan to Empower.

REPORT



Enrollment Projections
October 2009

ACKNOWLEDGEMENTS

DeJONG-HEALY would like to extend our appreciation to the Williamsburg-James City County Public Schools for selecting us to assist them in developing these enrollment projections. In addition, thank you to Scott Burckbuchler and Rita Roney for providing information necessary in the completion of this report.

As a consulting team, we appreciate this opportunity to serve your school community as you embark on your vision for the future of education in the Williamsburg-James City County Public Schools.

Tracy Healy
President

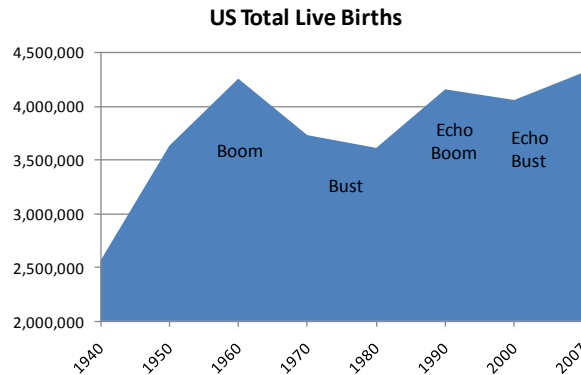
Ann Hussey
Project Director

Williamsburg-James City County Public Schools

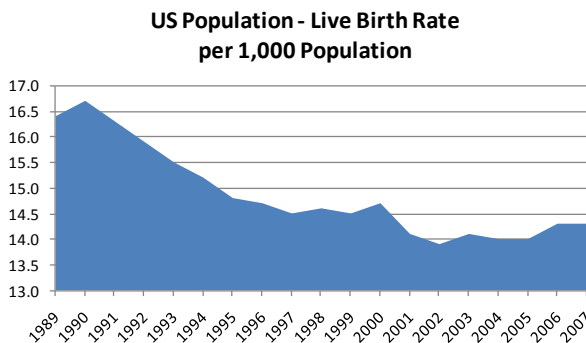
ENROLLMENT PROJECTION METHODOLOGIES

Introduction

Tracing the landscape of the country's public school enrollment back over the past fifty years reveals demographic, economic, and social changes. The United States as a whole continues to undergo major shifts in public student enrollment, due in large part to past events including the baby boom, the availability and use of birth control, and the development of suburbs. The baby boom of the late 1940s and 50s was followed by the baby bust of the 1960s and 70s. This gave rise to the echo baby boom of the 1980s, producing children who primarily graduated in the late 90s through 2007.



Source: CDC, National Vital Statistics Reports; National Center for Health Statistics



Source: CDC, National Vital Statistics Report

The U.S. live birth rate increased in 1998 for the first time in almost 10 years. In 2000, the live birth rate rebounded to levels seen in 1996, but fell again in both 2001 and 2001. The live birth rate of 13.9 is the lowest ever recorded.

increased again in 2000. However, the birth rate resumed a descending pattern in 2001 and reached an all-time low of 13.9 in 2002. It has since increased to 14.3 in 2007. When projecting future enrollments, it will be vital to track the number of live births, the amount of new housing activity, and the change in household composition. In addition, any of the following factors could cause a significant change in projected student enrollments:

Nationwide, districts continue to experience the effects of the echo baby bust of the 1990s. From the 1950s to the 1970s, a dramatic downsizing of the family unit occurred. A direct result was the declining school enrollment of the 1970s and 1980s. As of the 2000 Census, the size of a family was at an all-time low of 3.14 persons. According to the American Community Survey 2006 Estimate, the average family size increased to 3.2 persons per household. The live birth rate increased for the first time in several years in 1998 and

Williamsburg-James City County Public Schools

- ▶ Boundary adjustments
- ▶ New school openings
- ▶ Changes/additions in program offerings
- ▶ Preschool programs
- ▶ Change in grade configuration
- ▶ Interest rates/unemployment shifts
- ▶ Magnet/Charter/Private school opening or closure
- ▶ Zoning changes
- ▶ Unplanned new housing activity
- ▶ Planned, but not built, housing

Obviously, certain factors can be gauged and planned for far better than others. For instance, it may be relatively straightforward to gather housing data from local builders regarding the total number of lots in a planned subdivision and calculate the potential student yield. However, planning for changes in the unemployment rate, and how these may either boost or reduce public school enrollment, proves more difficult. In any case, it is essential to gather a wide variety of information in preparation for producing enrollment projections.

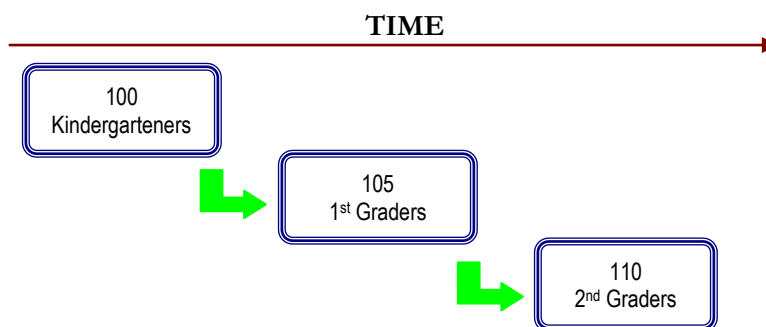
When looking ahead at a school district's enrollment over the next two, five, or ten years, it is helpful to approach the process from a global perspective. For example: How many new homes have been constructed each year? How many births have occurred each year in relation to the resident population? Is housing experiencing a turnover – if so, what is the composition of families moving in/out? Are more or less students attending private school or being home-schooled? What has the unemployment rate trend been over the past ten years? What new educational policies are in place now that could affect student enrollment figures?

The data sets generated from questions such as these have led to the development of general methodologies to project future student enrollments. They are as follows:

Williamsburg-James City County Public Schools

Cohort Survival Method

A cohort is a group of persons [in this case, students]. The cohort survival projection methodology uses previous live birth data and historical student enrollments to “age” a known population or cohort throughout the school grades. For instance, a cohort begins when a group of kindergarteners enrolls in grade K and moves to first grade the following year, second grade the next year, and so on.



A “survival ratio” is developed to track how this group of students grew or shrunk in number as they moved through the grade levels. By developing survival ratios for each grade transition [i.e., 2nd to 3rd grade] over a ten-year period of time, patterns emerge and can be folded into projections by using the survival ratios as a multiplier.

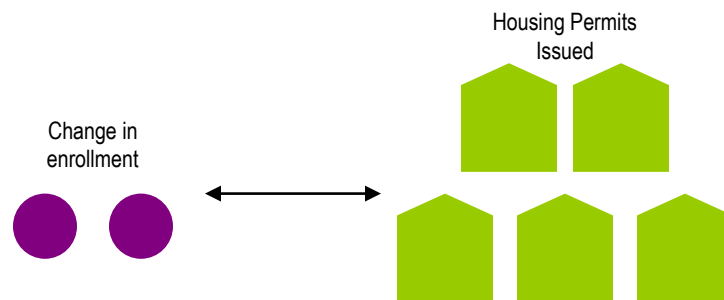
For example, if student enrollment has consistently increased from the 8th to the 9th grade over the past ten years, the survival ratio would be greater than 100% and could be multiplied by the current 8th grade to develop a projection for next year's 9th grade. This methodology can be carried through to develop ten years of projection figures. Because there is not a grade cohort to follow for students coming into kindergarten, live birth counts are used to develop a survival ratio. Babies born five years previous to the kindergarten class are compared in number, and a ratio can be developed to project future kindergarten enrollments.

The cohort survival method is useful in areas where population is stable [relatively flat, growing steadily, or declining steadily], and where there have been no significant fluctuations in enrollment, births, and housing patterns from year to year.

Williamsburg-James City County Public Schools

Housing

Enrollment projections can also be determined by analyzing the housing data for the areas that make up a school district. Yield factors can be established by comparing the historic change in enrollment from year to year divided by the total number of building or occupancy permits issued. For example, if student enrollment has increased by approximately 100 students each year and approximately 200 building permits have been issued each year for the past ten years, then the yield factor would be approximately .5 students per building permit.



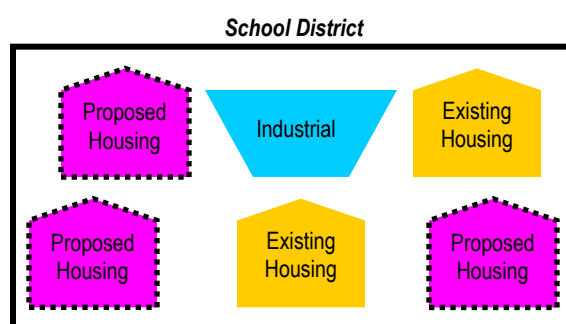
Once yield factors are established, the number of new students per year can be estimated by multiplying the yield factor by the number of projected new housing units. This method is effective when the rate of student enrollment far exceeds the live birth rate.

If housing demolitions are occurring in a district, these must also be taken into account. For instance, if housing demolitions/withdrawals have increased rapidly over recent years while new housing starts have remained relatively constant over many years, the conclusion may be that some of the new housing starts will simply be replacements for the families displaced by the demolitions. Of course, housing value and household composition would need to be further analyzed to confirm that this is indeed the case. It is possible that enrollment may remain flat or even decline even though there is new housing occurring in the area.

Williamsburg-James City County Public Schools

Land-Saturation Analysis

Housing data also drives the land-saturation analysis enrollment methodology. In areas where there is a high rate of development and the future development patterns in the area are clear, a “build-out” scenario can be developed. The scenario takes into consideration the remaining acreage to be developed, planned rate of completion, zoning policies, density per acre, type of housing, and ratios of school-age children per household type. This method is particularly useful in areas experiencing rapid growth.

**Geographic Information Systems**

The need for better tools and easier manipulation of data has led to a new industry standard in planning – GIS [Geographic Information Systems]. GIS technology allows school districts to quickly analyze countless data sets including birth data, housing information, and enrollment statistics. When paired with enrollment projections, GIS becomes an invaluable information-management and decision-making tool. For example, because data can be displayed visually, issues such as where new facilities should be located and how neighborhood schools affect the district become much clearer. Also, the software can be used to manage specific building data, becoming a maintenance-managing tool as well. Often, county or city offices are already implementing GIS technology and data can be shared and expanded among these organizations in the district. The opportunity also exists for collaboration with other agencies to share in the cost of initial implementation of GIS.

Williamsburg-James City County Public Schools

HISTORICAL ENROLLMENT

Over the past ten years, student enrollment in the Williamsburg-James City County Public Schools has increased by 2,317 students in grades K – 12. Total enrollment for the 2008-09 school year is 10,508, an increase of 260 students from the previous school year.

The following table and graphs illustrate the District's enrollment history from 2000-01 through 2009-10.

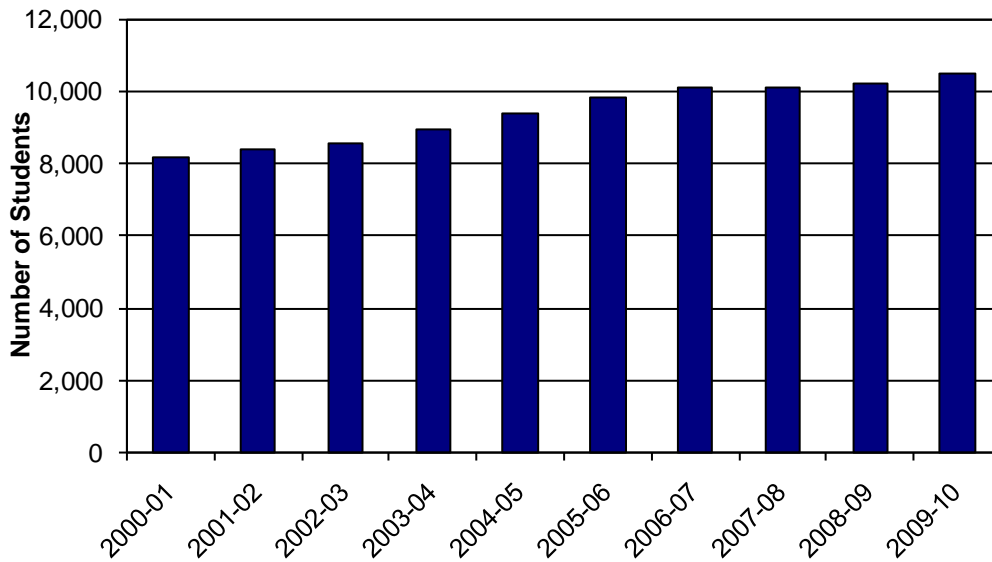
**Williamsburg-James City County School District
Historical Enrollment**

Grade	2000-01	2001-02	2002-03	2003-04	2004-05	2005-06	2006-07	2007-08	2008-09	2009-10
K	572	546	575	605	697	704	731	689	702	733
1	636	619	552	603	655	766	740	732	712	734
2	599	649	639	623	643	689	804	736	762	750
3	639	633	695	692	665	718	716	802	776	803
4	643	662	644	730	731	693	741	736	829	803
5	691	682	687	691	779	767	738	749	787	857
K - 5 Total	3,780	3,791	3,792	3,944	4,170	4,337	4,470	4,444	4,568	4,680
6	635	702	683	708	730	810	768	717	749	788
7	638	643	726	756	734	765	820	775	748	782
8	625	665	678	742	781	760	793	835	786	781
6 - 8 Total	1,898	2,010	2,087	2,206	2,245	2,335	2,381	2,327	2,283	2,351
9	757	724	768	807	883	908	893	898	956	939
10	664	722	703	742	801	878	881	887	901	938
11	590	605	629	636	677	693	812	793	785	852
12	502	555	574	624	626	669	668	788	755	748
9 - 12 Total	2,513	2,606	2,674	2,809	2,987	3,148	3,254	3,366	3,397	3,477
Grand Total	8,191	8,407	8,553	8,959	9,402	9,820	10,105	10,137	10,248	10,508

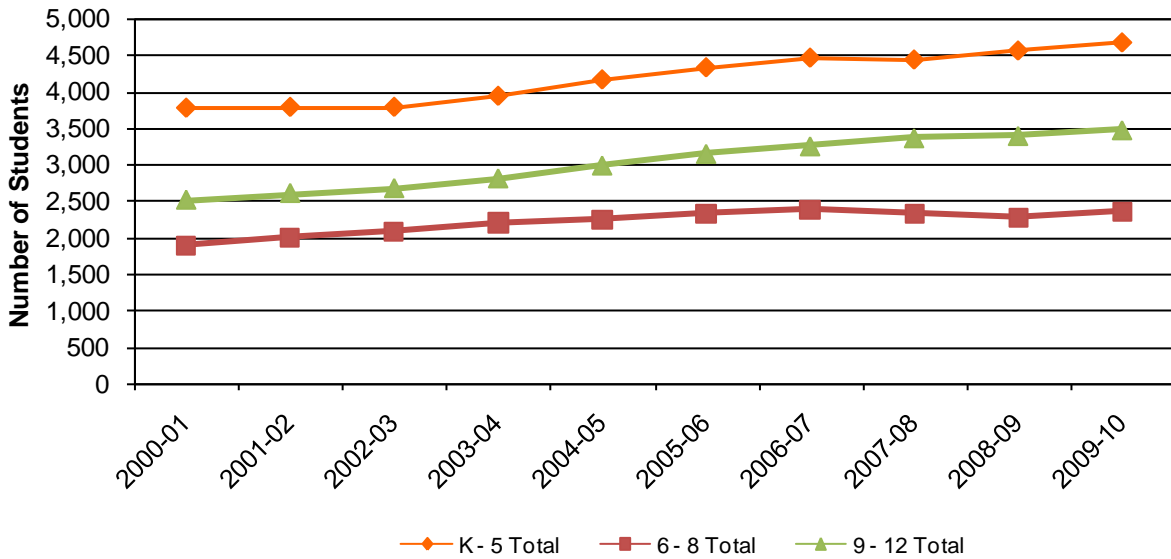
Source: Williamsburg-James City County School District

Williamsburg-James City County Public Schools

Williamsburg-James City County School District Historical Enrollment



Williamsburg-James City County School District Historical Enrollment by Grade Group



Williamsburg-James City County Public Schools

ACTUAL VERSUS PROJECTED ENROLLMENT

The following chart compares the previously developed enrollment projections, by school, versus the actual enrollments for the 2009-10 school year. Actual vs. projected enrollment for the 2009-10 school year was within 29 students.

School	2009-10	2009-10 Most Likely Projection	Difference	% Difference
Baker Elementary	551	568	-17	-3.09%
Byrd Elementary	511	488	23	4.50%
Norge Elementary	592	624	-32	-5.41%
James River Elementary	466	475	-9	-1.93%
Whaley Elementary	459	461	-2	-0.44%
DJ Montague Elementary	581	632	-51	-8.78%
Stonehouse Elementary	831	787	44	5.29%
Matoaka Elementary	689	691	-2	-0.29%
Toano Middle	859	856	3	0.35%
James Blair Middle	642	655	-13	-2.02%
Berkeley Middle	850	820	30	3.53%
Lafayette High	1,112	1106	6	0.54%
Jamestown High	1,235	1271	-36	-2.91%
Warhill High	1,130	1045	85	7.52%
Total	10,508	10,479	29	0.28%

Williamsburg-James City County Public Schools

LIVE BIRTH DATA

Utilization of live birth data is recommended when projecting future kindergarten enrollments. This data provides a helpful overall trend. Large bubbles in birth counts, either up or down, can also be planned for and anticipated by the District.

In addition, the live birth counts are used in determining a birth-to-kindergarten survival ratio. This ratio identifies the percentage of children born in a representative area who attend kindergarten in the District five years later. The survival ratios for birth-to-kindergarten as well as grades 1-12 can be found later in this report.

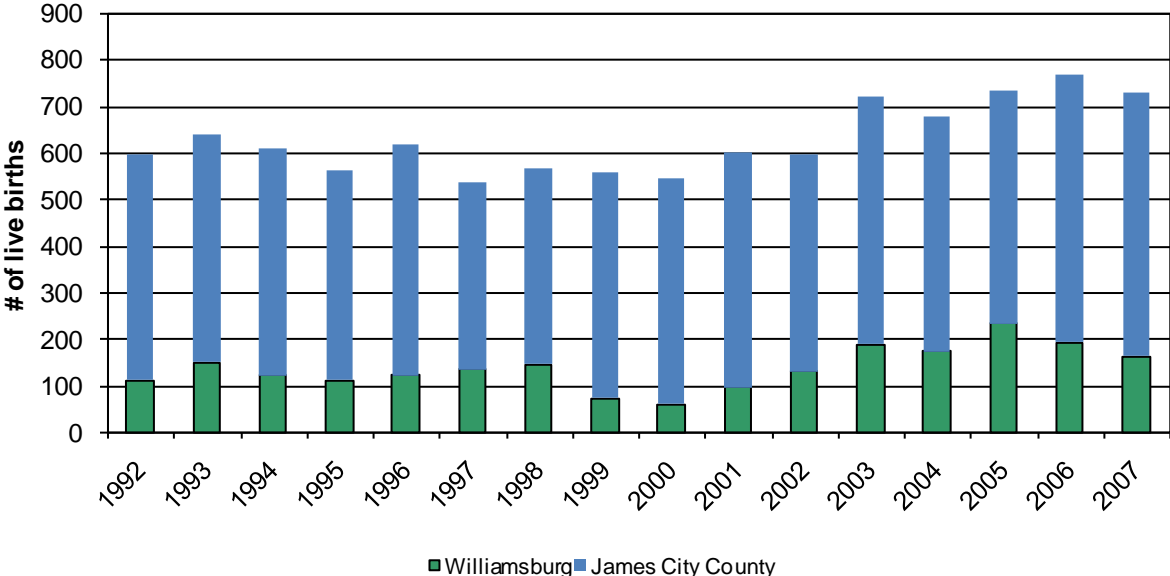
The chart and graph below illustrate live birth counts in Williamsburg and James City County.

Live Birth Count 1992-2007		
Year	Williamsburg	James City County
1992	111	486
1993	148	492
1994	121	486
1995	111	451
1996	122	497
1997	135	400
1998	144	423
1999	72	487
2000	59	487
2001	96	502
2002	129	466
2003	188	532
2004	172	504
2005	233	502
2006	192	576
2007	161	569

Source: Virginia Department of Health, Office of Vital Records and Health Statistics

Williamsburg-James City County Public Schools

Live Birth Count



Williamsburg-James City County Public Schools

DEMOGRAPHICS

Following are block group estimates and projections provided by ESRI Business Information Solutions (ESRI BIS). ESRI BIS uses a time series of estimates from the U.S. Census Bureau that includes the latest estimates and intercensal estimates adjusted for error of closure. The Census Bureau's time series is consistent, but testing has revealed improved accuracy by using a variety of sources to track county population trends.

ESRI BIS also employs a time series of building permits and housing starts plus residential deliveries. Finally, local data sources that tested well against Census 2000 are reviewed. Data sources are integrated and then analyzed by Census Block Groups.

Sources of data include:

- ▶ Supplementary Surveys of the Census Bureau
- ▶ Bureau of Labor Statistics' (BLS) Local Area Unemployment Statistics
- ▶ BLS Occupational Employment Statistics
- ▶ *InfoUSA*
- ▶ U.S. Bureau of the Census' Current Population Survey
- ▶ National Planning Association Data Service

Williamsburg-James City County Public Schools

Below is a list of definitions as they appear on the U.S. Census Bureau website, to aid in interpretation of the following tables and maps.

Household:

A household includes all the people who occupy a housing unit as their usual place of residence.

Average family size:

A measure obtained by dividing the number of members of families by the total number of families (or family householders).

Family household (Family):

A family includes a householder and one or more people living in the same household who are related to the householder by birth, marriage, or adoption. All people who are related to the householder are regarded as members of his or her family. A family household may contain people not related to the householder, but those people are not included as part of the householder's family in census tabulations. Thus, the number of family households is equal to the number of families, but family households may include more members than do families. A household can contain only one family for purposes of census tabulations. Not all households contain families since a household may comprise a group of unrelated people or one person living alone.

Householder:

The person, or one of the people, in whose name the home is owned, being bought, or rented. If there is no such person present, any household member 15 years old and over can serve as the householder for the purposes of the census. Two types of householders are distinguished: a family householder and a nonfamily householder. A family householder is a householder living with one or more people related to him or her by birth, marriage, or adoption. The householder and all people in the household related to him are family members. A nonfamily householder is a householder living alone or with nonrelatives only.

Williamsburg-James City County Public Schools

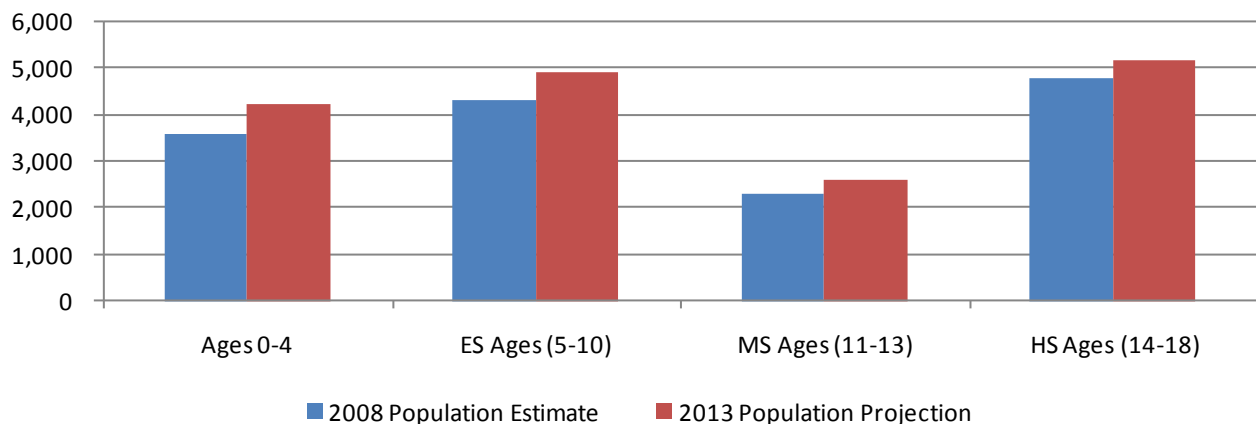
The following tables illustrate the current estimates and 5-year population projections based on block groups that comprise the state and school district, indicating areas of current and projected growth. The tables have been developed to determine selected age group projections and projections for household income, family size, and family income.

The 0-18 year-old population in the District currently totals 14,897. This population is projected to increase by 1,912 children, or approximately 13 percent.

Williamsburg-James City County School District	2008 Population Estimate	2013 Population Projection
Ages 0-4	3,564	4,200
ES Ages (5-10)	4,288	4,878
MS Ages (11-13)	2,298	2,586
HS Ages (14-18)	4,748	5,145
Total Ages 0-18	14,897	16,809
Average Age	40	41

Source: ESRI BIS

Williamsburg-James City County School District Population Estimates & Projections by Age Group



Williamsburg-James City County Public Schools

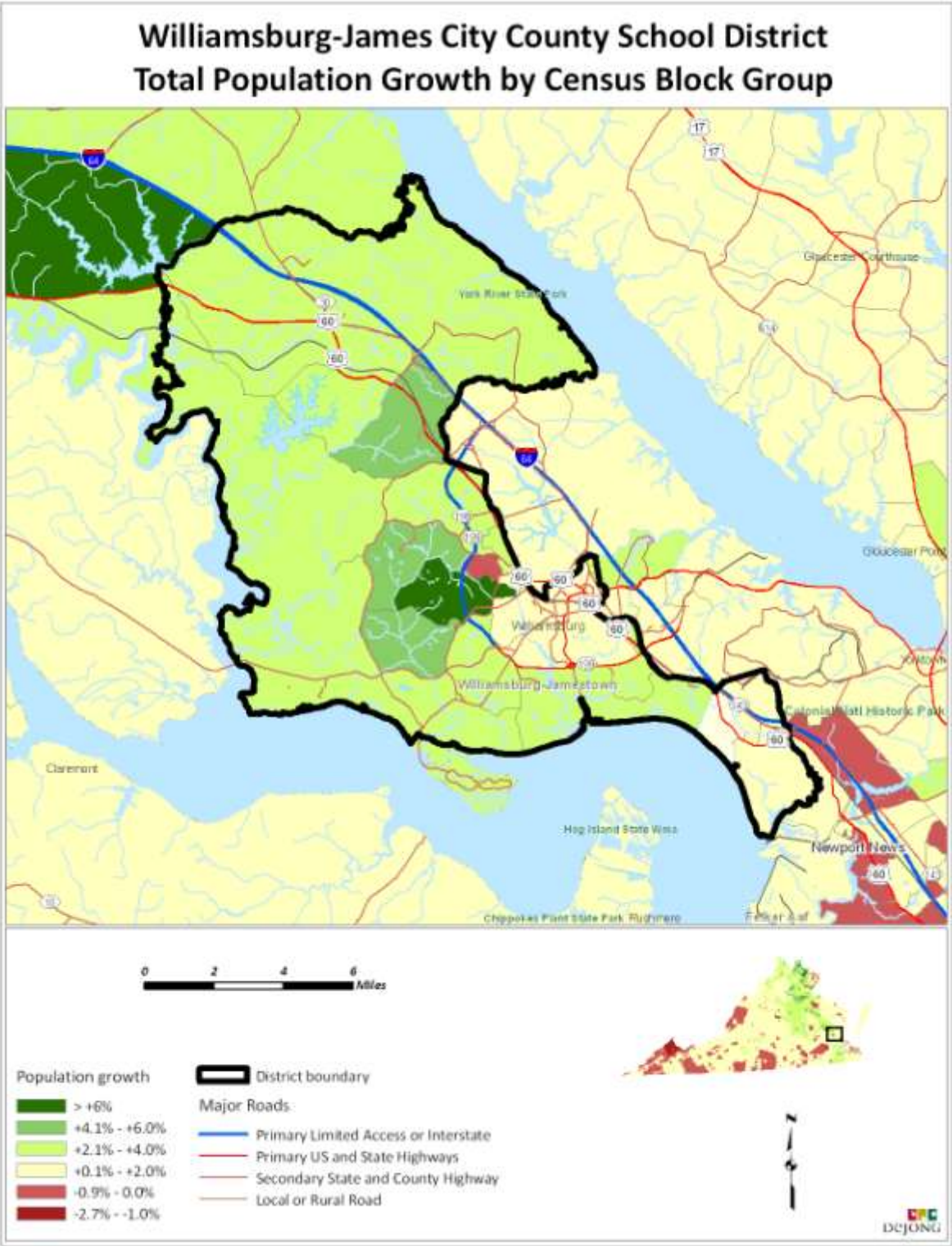
Average household and family incomes in the District are projected to increase by 19% and 17%, respectively over a 5-year period. Average family size is projected to remain relatively the same.

Williamsburg-James City County School District	2008 Population Estimate	2013 Population Projection
Total Population	100,856	116,495
Average Household Income	\$85,257	\$101,126
Average Family Size	2.87	2.88
Average Family Income	\$97,178	\$113,502

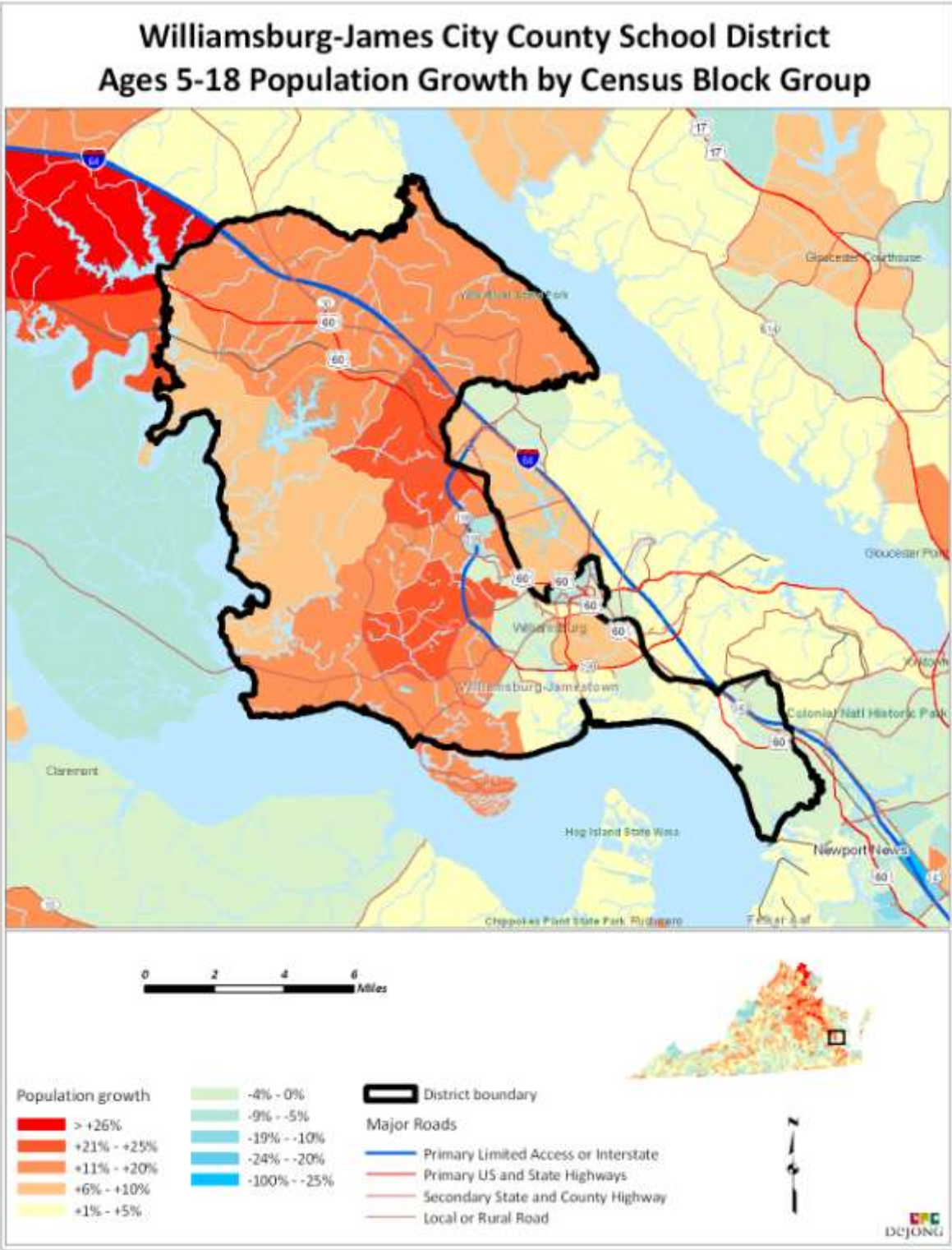
Source: ESRI BIS

The maps on the following pages illustrate the data identified in the tables. The color coding identifies areas within the District that may be increasing or decreasing at different rates than others.

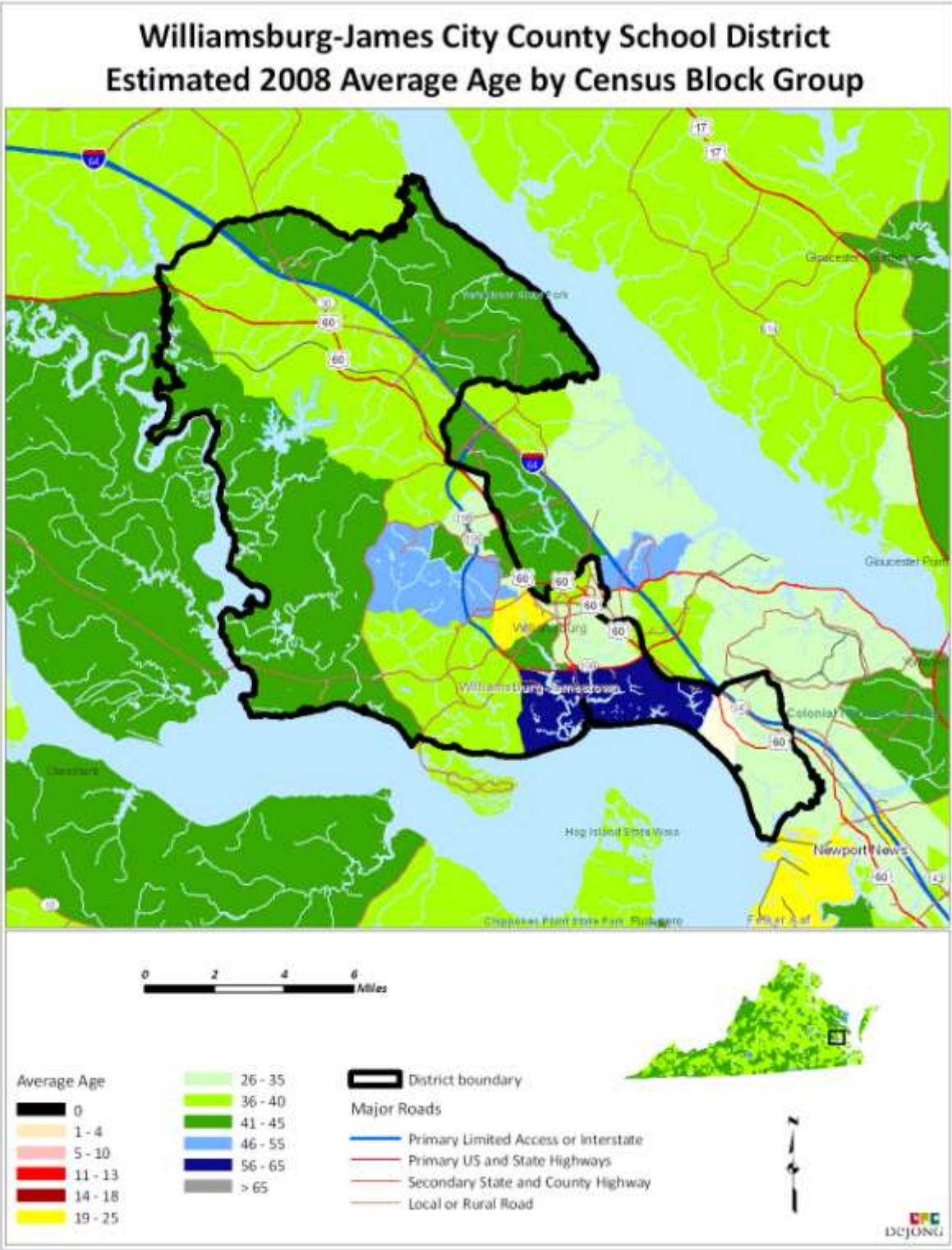
Williamsburg-James City County Public Schools



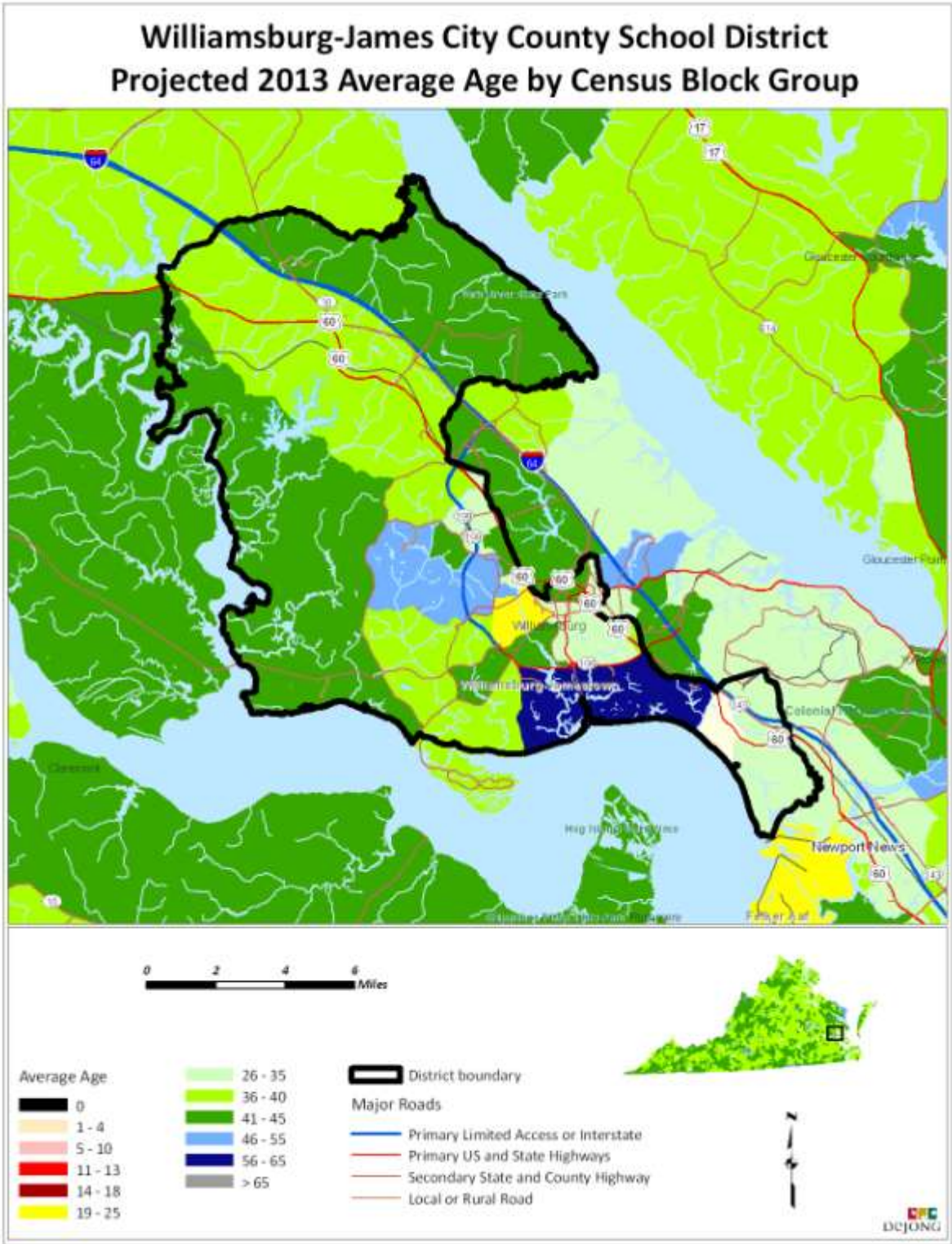
Williamsburg-James City County Public Schools



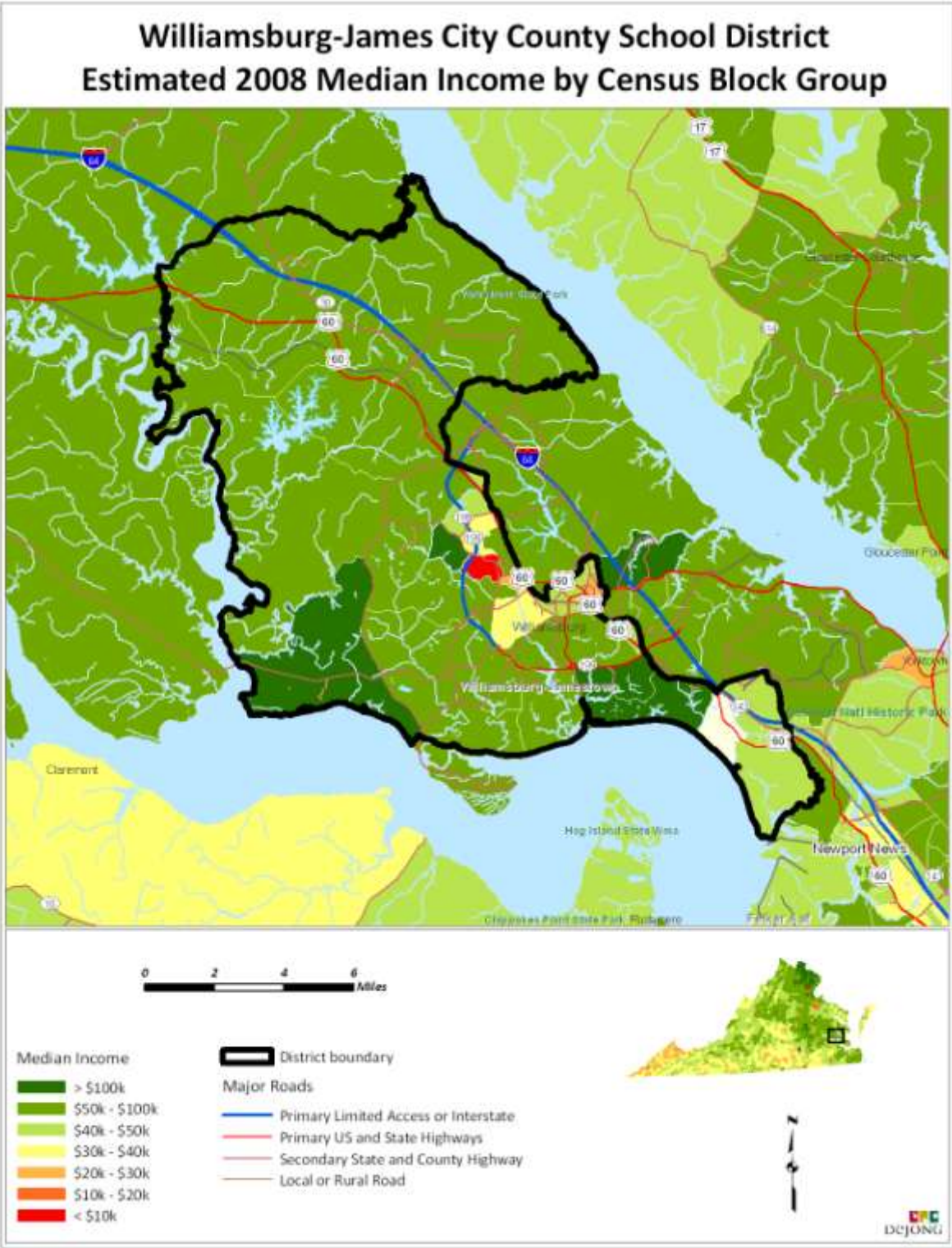
Williamsburg-James City County Public Schools



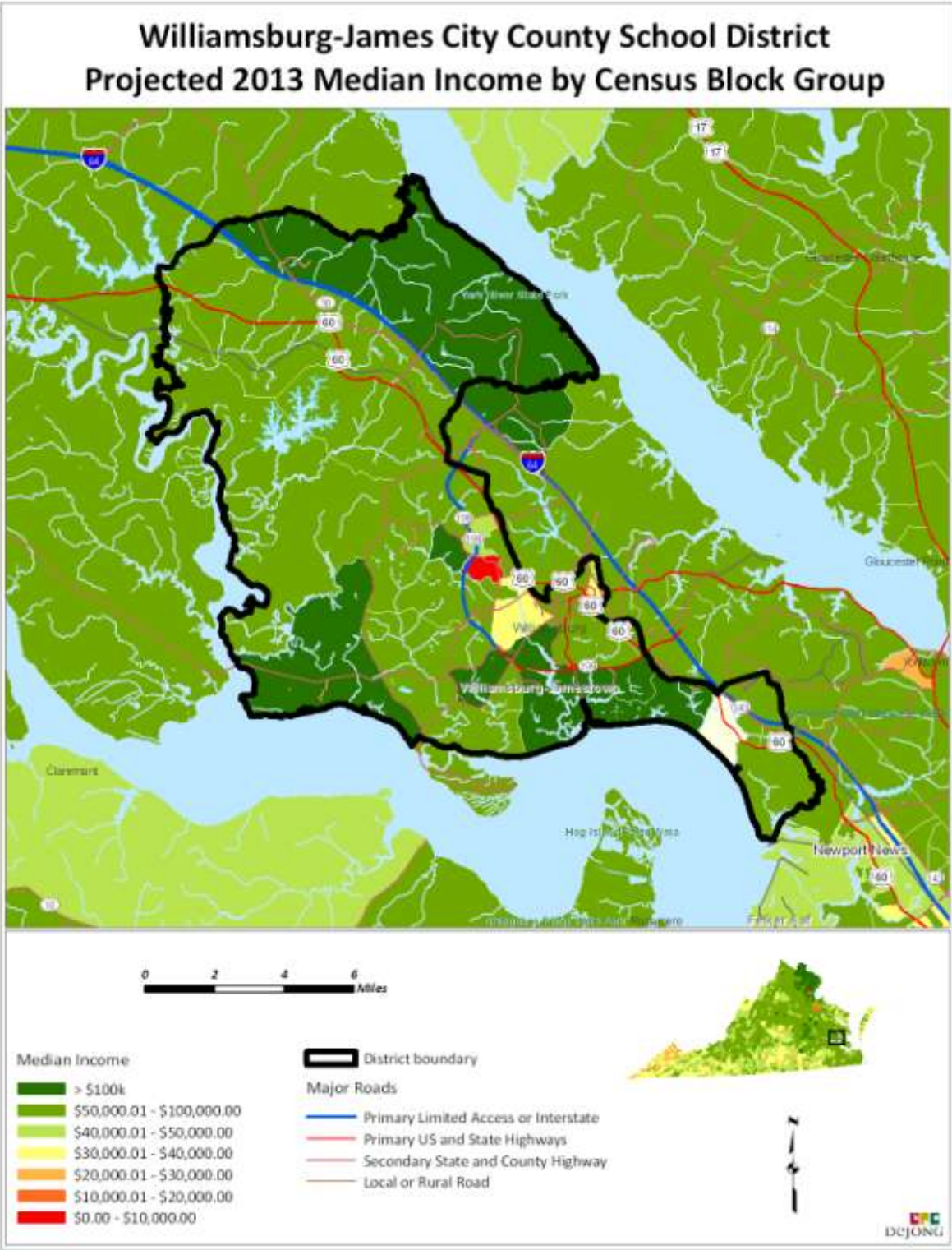
Williamsburg-James City County Public Schools



Williamsburg-James City County Public Schools



Williamsburg-James City County Public Schools



Williamsburg-James City County Public Schools

Yield factors were determined based on the historic change in enrollment from year to year, divided by the total number of building permits issued during the last 4 years. The table below illustrates the average yield factor by grade. Overall, for every 100 new single-family homes built in the county, approximately 26 new students enter the school district.

Average Yield Factor					
Grade	09	08	07	06	Avg Yield
K	733	702	689	731	0.0177
1	734	712	732	740	0.0359
2	750	762	736	804	0.0424
3	803	776	802	716	0.0500
4	803	829	736	741	0.0395
5	857	787	749	738	0.0483
6	788	749	717	768	-0.0054
7	782	748	775	820	0.0422
8	781	786	835	793	0.0350
9	939	956	898	893	0.2062
10	938	901	887	881	-0.0141
11	852	785	793	812	-0.1124
12	748	755	788	668	-0.0307
TOTAL	10508	10248	10137	10105	0.2619
# SF homes previous year	435	694	1136		

Grade	2009-10	yield	2008-09	yield	2007-08	yield
K	31	0.0713	13	0.0187	-42	-0.0370
1	32	0.0736	23	0.0331	1	0.0009
2	38	0.0874	30	0.0432	-4	-0.0035
3	41	0.0943	40	0.0576	-2	-0.0018
4	27	0.0621	27	0.0389	20	0.0176
5	28	0.0644	51	0.0735	8	0.0070
6	1	0.0023	0	0.0000	-21	-0.0185
7	33	0.0759	31	0.0447	7	0.0062
8	33	0.0759	11	0.0159	15	0.0132
9	153	0.3517	121	0.1744	105	0.0924
10	-18	-0.0414	3	0.0043	-6	-0.0053
11	-49	-0.1126	-102	-0.1470	-88	-0.0775
12	-7	-0.0161	-38	-0.0548	-24	-0.0211
TOTAL	260	0.5977	111	0.1599	32	0.0282

Williamsburg-James City County Public Schools

SURVIVAL RATIOS

The chart below demonstrates the changes in enrollment as students move through the system. Percentages greater than 100 indicate that there are more students than there were in the previous grade the previous year. In other words, there was growth and new students were added to the system. Percentages less than 100 indicate that there was decline or students left the system.

- ▶ Birth to Kindergarten: This ratio indicates the number of children born in the area who attend kindergarten in the District 5 years later. Percentages less than 100% result from movement out of the district, attendance at a non-public or charter school, or residence in another district within the same area.
- ▶ Grades 8-9: The higher than usual percentage often is a result of school district promotion policies. Often in school districts, students are promoted from 8th to 9th grade and after one year in 9th grade do not have sufficient credits to be classified as 10th graders and are counted again as 9th graders the following year. There may also be students who are attending private or charter schools or are home schooled through grade 8 and then attend public schools for high school education.

The following table illustrates the survival ratios used in developing the enrollment projections for the Williamsburg-James City County Public Schools.

from	to	birth -> K	K->1	1->2	2->3	3->4	4->5	5->6	6->7	7->8	8->9	9->10	10->11	11->12
2000	2001	88.2%	108.2%	102.0%	105.7%	103.6%	106.1%	101.6%	101.3%	104.2%	115.8%	95.4%	91.1%	94.1%
2001	2002	107.5%	101.1%	103.2%	107.1%	101.7%	103.8%	100.1%	103.4%	105.4%	115.5%	97.1%	87.1%	94.9%
2002	2003	106.7%	104.9%	112.9%	108.3%	105.0%	107.3%	103.1%	110.7%	102.2%	119.0%	96.6%	90.5%	99.2%
2003	2004	124.7%	108.3%	106.6%	106.7%	105.6%	106.7%	105.6%	103.7%	103.3%	119.0%	99.3%	91.2%	98.4%
2004	2005	128.9%	109.9%	105.2%	111.7%	104.2%	104.9%	104.0%	104.8%	103.5%	116.3%	99.4%	86.5%	98.8%
2005	2006	122.2%	105.1%	105.0%	103.9%	103.2%	106.5%	100.1%	101.2%	103.7%	117.5%	97.0%	92.5%	96.4%
2006	2007	115.8%	100.1%	99.5%	99.8%	102.8%	101.1%	97.2%	100.9%	101.8%	113.2%	99.3%	90.0%	97.0%
2007	2008	97.5%	103.3%	104.1%	105.4%	103.4%	106.9%	100.0%	104.3%	101.4%	114.5%	100.3%	88.5%	95.2%
2008	2009	108.4%	104.6%	105.3%	105.4%	103.5%	103.4%	100.1%	104.4%	104.4%	119.5%	98.1%	94.6%	95.3%
	average	111.11%	105.055%	104.87%	106.0%	103.67%	105.2%	101.3%	103.9%	103.3%	116.702%	98.065%	90.224%	96.592%
	standard deviation	12.462%	3.106%	3.462%	3.042%	1.099%	1.958%	2.408%	2.801%	1.237%	2.062%	1.541%	2.408%	1.774%

Williamsburg-James City County Public Schools

ENROLLMENT PROJECTIONS

Following is the ten-year projected enrollment based on the slowing housing market and downturn in the economy. According to this projection, enrollment would increase 2,381 students in grades K – 12 from the current 2009-10 enrollment of 10,508 to the 2019-20 projected enrollment of 12,889 students.

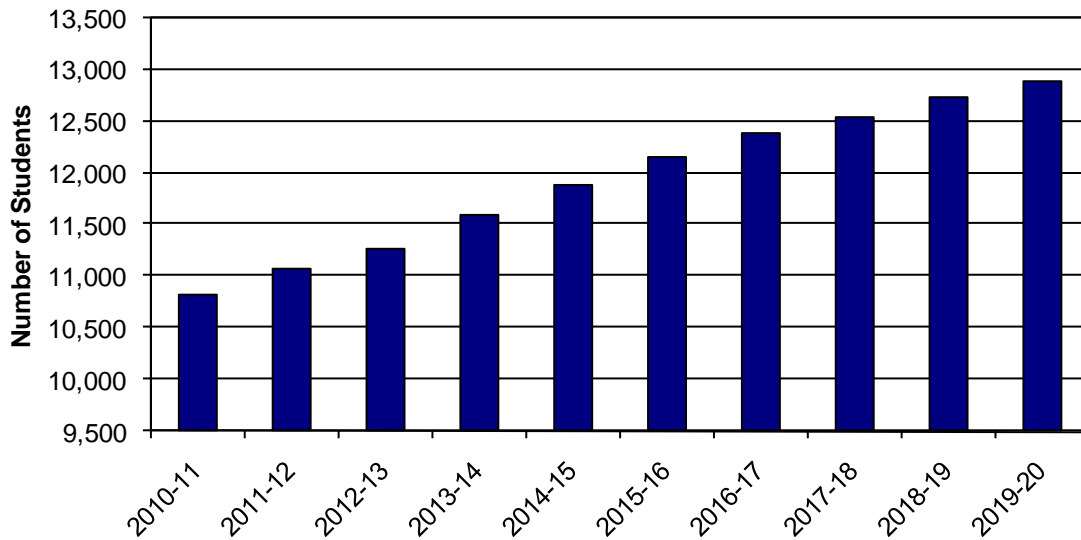
Williamsburg-James City County School District Projected Enrollment

Grade	2010-11	2011-12	2012-13	2013-14	2014-15	2015-16	2016-17	2017-18	2018-19	2019-20
K	809	845	804	825	817	817	817	817	817	817
1	764	840	879	835	857	849	849	849	849	849
2	773	801	880	920	875	896	888	888	888	888
3	794	813	844	926	968	921	944	935	935	935
4	833	820	842	872	959	1,002	953	978	967	967
5	840	867	855	875	907	998	1,043	990	1,018	1,006
K - 5 Total	4,813	4,986	5,104	5,253	5,383	5,483	5,494	5,457	5,474	5,462
6	859	837	842	853	874	907	997	1,041	990	1,015
7	825	896	875	904	890	913	947	1,039	1,087	1,033
8	806	848	906	899	930	915	938	972	1,070	1,117
6 - 8 Total	2,490	2,581	2,623	2,656	2,694	2,735	2,882	3,052	3,147	3,165
9	910	936	985	1,071	1,045	1,081	1,065	1,090	1,131	1,243
10	929	898	923	971	1,058	1,031	1,067	1,050	1,077	1,116
11	858	849	821	845	889	968	943	975	959	984
12	818	822	812	786	809	851	926	903	935	919
9 - 12 Total	3,515	3,505	3,541	3,673	3,801	3,931	4,001	4,018	4,102	4,262
Grand Total	10,818	11,072	11,268	11,582	11,878	12,149	12,377	12,527	12,723	12,889

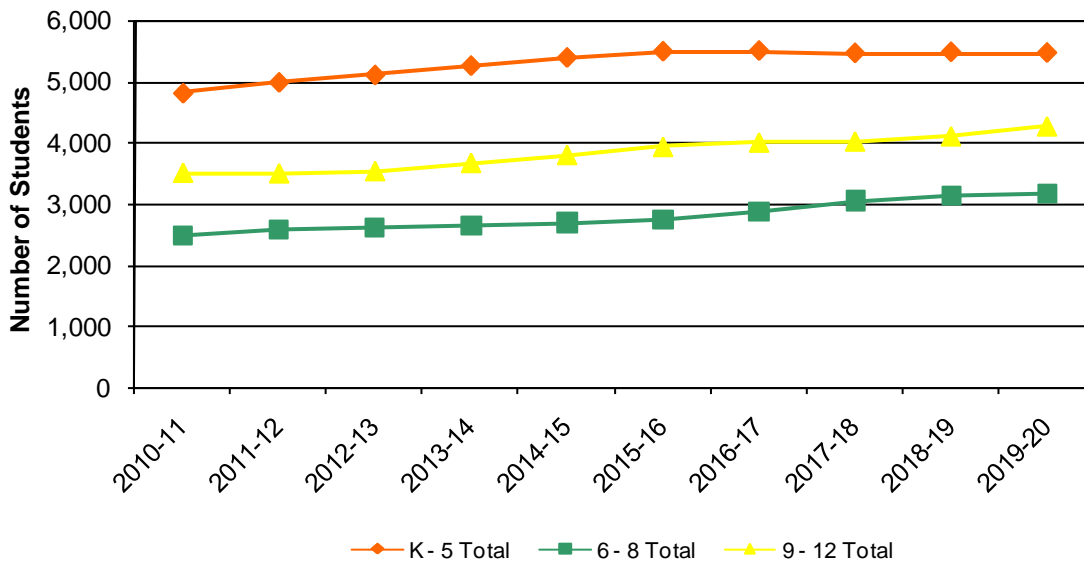
Source: DeJONG-HEALY

Williamsburg-James City County Public Schools

Williamsburg-James City County Public School District Projected Enrollment



Williamsburg-James City County School District Projected Enrollment by Grade Group



Williamsburg-James City County Public Schools

Historical & Projected Enrollment by School

The following charts illustrate the historical and projected enrollment of each school in the District.

Baker Elementary School Historical Enrollment

Grade	2000-01	2001-02	2002-03	2003-04	2004-05	2005-06	2006-07	2007-08	2008-09	2009-10
K	96	99	104	109	140	111	128	75	78	77
1	99	102	98	114	116	139	112	85	87	77
2	116	93	116	119	123	118	158	84	88	88
3	119	126	102	128	122	130	112	103	101	96
4	120	127	132	106	147	105	129	89	103	108
5	137	126	135	146	124	149	113	104	93	105
K - 5 Total	687	673	687	722	772	752	752	540	550	551

Source: Williamsburg-James City County School District

Baker Elementary School Projected Enrollment

Grade	2010-11	2011-12	2012-13	2013-14	2014-15	2015-16	2016-17	2017-18	2018-19	2019-20
K	85	89	85	87	86	86	86	86	86	86
1	80	88	92	88	90	89	89	89	89	89
2	91	94	103	108	103	105	104	104	104	104
3	95	97	101	111	116	110	113	112	112	112
4	112	110	113	117	129	135	128	131	130	130
5	103	106	105	107	111	122	128	121	125	123
K - 5 Total	566	584	599	618	635	647	648	643	646	644

Source: DeJONG-HEALY

Williamsburg-James City County Public Schools

Byrd Elementary School Historical Enrollment

Grade	2000-01	2001-02	2002-03	2003-04	2004-05	2005-06	2006-07	2007-08	2008-09	2009-10
K	79	74	69	67	69	85	104	74	75	73
1	111	88	68	71	71	101	90	84	75	89
2	81	105	82	76	60	85	100	75	85	86
3	92	81	101	83	69	75	83	93	77	92
4	80	96	83	102	82	86	74	71	81	83
5	94	82	93	83	115	88	97	71	78	88
K - 5 Total	537	526	496	482	466	520	548	468	471	511

Source: Williamsburg-James City County School District

Byrd Elementary School Projected Enrollment

Grade	2010-11	2011-12	2012-13	2013-14	2014-15	2015-16	2016-17	2017-18	2018-19	2019-20
K	81	84	80	82	81	81	81	81	81	81
1	93	102	107	101	104	103	103	103	103	103
2	89	92	101	105	100	103	102	102	102	102
3	91	93	97	106	111	106	108	107	107	107
4	86	85	87	90	99	104	99	101	100	100
5	86	89	88	90	93	103	107	102	105	103
K - 5 Total	526	545	560	574	588	600	600	596	598	596

Source: DeJONG-HEALY

Norge Elementary School Historical Enrollment

Grade	2000-01	2001-02	2002-03	2003-04	2004-05	2005-06	2006-07	2007-08	2008-09	2009-10
K	100	116	93	90	115	110	97	93	96	80
1	104	98	106	89	89	113	111	92	91	96
2	99	111	101	111	94	93	112	104	88	101
3	102	108	117	117	114	105	99	109	100	96
4	103	106	105	120	112	118	102	102	113	109
5	82	106	103	115	120	118	115	102	113	110
K - 5 Total	590	645	625	642	644	657	636	602	601	592

Source: Williamsburg-James City County School District

Norge Elementary School Projected Enrollment

Grade	2010-11	2011-12	2012-13	2013-14	2014-15	2015-16	2016-17	2017-18	2018-19	2019-20
K	88	92	88	90	89	89	89	89	89	89
1	100	110	115	109	112	111	111	111	111	111
2	104	108	119	124	118	121	119	119	119	119
3	95	97	101	111	116	110	113	112	112	112
4	113	111	114	119	130	136	129	133	131	131
5	108	111	110	112	117	128	134	127	131	129
K - 5 Total	608	629	647	665	682	695	695	691	693	691

Source: DeJONG-HEALY

Williamsburg-James City County Public Schools

James River Elementary School Historical Enrollment

Grade	2000-01	2001-02	2002-03	2003-04	2004-05	2005-06	2006-07	2007-08	2008-09	2009-10
K	78	50	64	58	69	69	68	76	57	85
1	74	80	48	65	74	87	71	67	76	68
2	65	67	76	58	79	75	78	80	74	77
3	74	65	66	74	75	79	80	79	93	79
4	73	57	59	73	71	75	84	77	77	78
5	99	79	59	59	66	84	75	74	82	79
K - 5 Total	463	398	372	387	434	469	456	453	459	466

Source: Williamsburg-James City County School District

James River Elementary School Projected Enrollment

Grade	2010-11	2011-12	2012-13	2013-14	2014-15	2015-16	2016-17	2017-18	2018-19	2019-20
K	94	98	93	96	95	95	95	95	95	95
1	71	78	82	78	80	79	79	79	79	79
2	79	82	90	95	90	92	91	91	91	91
3	78	80	83	91	95	91	93	92	92	92
4	81	80	82	85	93	97	93	95	94	94
5	78	80	79	81	84	92	96	91	94	93
K - 5 Total	481	498	509	526	537	546	547	543	545	544

Source: DeJONG-HEALY

Whaley Elementary School Historical Enrollment

Grade	2000-01	2001-02	2002-03	2003-04	2004-05	2005-06	2006-07	2007-08	2008-09	2009-10
K	61	57	78	75	91	94	83	64	85	76
1	72	73	69	79	77	92	105	74	57	76
2	72	80	79	77	88	75	107	84	76	57
3	73	83	89	88	84	103	78	82	74	79
4	79	90	87	98	92	90	104	63	89	82
5	86	82	96	80	102	101	96	62	65	89
K - 5 Total	443	465	498	497	534	555	573	429	446	459

Source: Williamsburg-James City County School District

Whaley Elementary School Projected Enrollment

Grade	2010-11	2011-12	2012-13	2013-14	2014-15	2015-16	2016-17	2017-18	2018-19	2019-20
K	84	88	83	86	85	85	85	85	85	85
1	79	87	91	87	89	88	88	88	88	88
2	59	61	67	70	67	68	68	68	68	68
3	78	80	83	91	95	91	93	92	92	92
4	85	84	86	89	98	102	97	100	99	99
5	87	90	89	91	94	104	108	103	106	105
K - 5 Total	472	490	499	514	528	538	539	536	538	537

Source: DeJONG-HEALY

Williamsburg-James City County Public Schools

DJ Montague Elementary School

Historical Enrollment

Grade	2000-01	2001-02	2002-03	2003-04	2004-05	2005-06	2006-07	2007-08	2008-09	2009-10
K	72	86	90	121	116	132	134	100	95	100
1	97	86	96	106	132	125	136	101	94	97
2	78	107	92	114	110	146	128	99	101	87
3	104	80	123	103	123	131	155	96	95	98
4	105	109	89	133	115	126	138	125	102	95
5	111	123	122	112	142	119	139	104	122	104
K - 5 Total	567	591	612	689	738	779	830	625	609	581

Source: Williamsburg-James City County School District

DJ Montague Elementary School

Projected Enrollment

Grade	2010-11	2011-12	2012-13	2013-14	2014-15	2015-16	2016-17	2017-18	2018-19	2019-20
K	110	115	110	112	111	111	111	111	111	111
1	101	111	116	110	113	112	112	112	112	112
2	90	93	102	107	101	104	103	103	103	103
3	97	99	103	113	118	112	115	114	114	114
4	99	97	100	103	114	119	113	116	114	114
5	102	105	104	106	110	121	127	120	123	122
K - 5 Total	599	620	635	651	667	679	681	676	677	676

Source: DeJONG-HEALY

Stonehouse Elementary School

Historical Enrollment

Grade	2000-01	2001-02	2002-03	2003-04	2004-05	2005-06	2006-07	2007-08	2008-09	2009-10
K	86	64	77	85	97	103	117	111	113	139
1	79	92	67	79	96	109	115	131	116	128
2	88	86	93	68	89	97	121	122	136	135
3	75	90	97	99	78	95	109	128	134	145
4	83	77	89	98	112	93	110	115	133	142
5	82	84	79	96	110	108	103	131	130	142
K - 5 Total	493	493	502	525	582	605	675	738	762	831

Source: Williamsburg-James City County School District

Stonehouse Elementary School

Projected Enrollment

Grade	2010-11	2011-12	2012-13	2013-14	2014-15	2015-16	2016-17	2017-18	2018-19	2019-20
K	153	160	152	156	155	155	155	155	155	155
1	133	146	153	145	149	148	148	148	148	148
2	139	144	158	165	157	161	160	160	160	160
3	143	147	152	167	175	166	170	169	169	169
4	147	145	149	154	169	177	168	173	171	171
5	139	144	141	145	150	165	173	164	168	167
K - 5 Total	854	886	905	932	955	972	974	969	971	970

Source: DeJONG-HEALY

Williamsburg-James City County Public Schools

Matoaka Elementary School Historical Enrollment

Grade	2000-01	2001-02	2002-03	2003-04	2004-05	2005-06	2006-07	2007-08	2008-09	2009-10
K								96	103	103
1								98	116	103
2								88	114	119
3								112	102	118
4								94	131	106
5								101	104	140
K - 5 Total	0	0	0	0	0	0	0	589	670	689

Source: Williamsburg-James City County School District

Matoaka Elementary School Projected Enrollment

Grade	2010-11	2011-12	2012-13	2013-14	2014-15	2015-16	2016-17	2017-18	2018-19	2019-20
K	114	119	113	116	115	115	115	115	115	115
1	107	118	123	117	120	119	119	119	119	119
2	122	127	140	146	139	142	141	141	141	141
3	117	120	124	136	142	135	139	137	137	137
4	110	108	111	115	127	132	126	129	128	128
5	137	142	139	143	148	163	170	162	166	164
K - 5 Total	707	734	750	773	791	806	810	803	806	804

Source: DeJONG-HEALY

Toano Middle School Historical Enrollment

Grade	2000-01	2001-02	2002-03	2003-04	2004-05	2005-06	2006-07	2007-08	2008-09	2009-10
6	234	248	254	251	254	302	279	249	284	292
7	242	252	250	271	262	275	297	287	255	289
8	243	257	254	261	295	254	282	289	300	278
6 - 8 Total	719	757	758	783	811	831	858	825	839	859

Source: Williamsburg-James City County School District

Toano Middle School Projected Enrollment

Grade	2010-11	2011-12	2012-13	2013-14	2014-15	2015-16	2016-17	2017-18	2018-19	2019-20
6	318	310	297	316	324	336	369	386	367	376
7	305	331	324	334	329	337	350	384	402	382
8	287	302	312	320	331	326	334	346	381	398
6 - 8 Total	910	943	933	970	984	999	1,053	1,116	1,150	1,156

Source: DeJONG-HEALY

Williamsburg-James City County Public Schools

James Blair Middle School Historical Enrollment

Grade	2000-01	2001-02	2002-03	2003-04	2004-05	2005-06	2006-07	2007-08	2008-09	2009-10
6	179	201	191	185	203	219	215	210	206	202
7	155	171	212	211	181	205	228	218	224	219
8	170	161	177	211	199	204	215	249	210	221
6 - 8 Total	504	533	580	607	583	628	658	677	640	642

Source: Williamsburg-James City County School District

James Blair Middle School Projected Enrollment

Grade	2010-11	2011-12	2012-13	2013-14	2014-15	2015-16	2016-17	2017-18	2018-19	2019-20
6	220	215	222	219	224	233	256	267	254	260
7	231	251	245	253	249	256	265	291	304	289
8	228	240	261	254	263	259	265	275	303	316
6 - 8 Total	679	706	728	726	736	748	786	833	861	865

Source: DeJONG-HEALY

Berkeley Middle School Historical Enrollment

Grade	2000-01	2001-02	2002-03	2003-04	2004-05	2005-06	2006-07	2007-08	2008-09	2009-10
6	222	253	238	272	273	289	274	258	259	294
7	241	220	264	274	291	285	295	270	269	274
8	212	247	247	270	287	302	296	297	276	282
6 - 8 Total	675	720	749	816	851	876	865	825	804	850

Source: Williamsburg-James City County School District

Berkeley Middle School Projected Enrollment

Grade	2010-11	2011-12	2012-13	2013-14	2014-15	2015-16	2016-17	2017-18	2018-19	2019-20
6	321	312	323	318	326	338	372	388	369	379
7	289	314	306	317	312	320	332	364	381	362
8	291	306	333	325	336	330	339	351	386	403
6 - 8 Total	901	932	962	960	974	988	1,043	1,103	1,136	1,144

Source: DeJONG-HEALY

Williamsburg-James City County Public Schools

Lafayette High School Historical Enrollment

Grade	2000-01	2001-02	2002-03	2003-04	2004-05	2005-06	2006-07	2007-08	2008-09	2009-10
9	427	368	398	403	435	449	439	280	314	299
10	333	409	380	384	422	451	441	299	284	310
11	329	305	350	338	349	373	430	272	251	271
12	262	309	290	353	330	351	353	415	250	232
9 - 12 Total	1,351	1,391	1,418	1,478	1,536	1,624	1,663	1,266	1,099	1,112

Source: Williamsburg-James City County School District

Lafayette High School Projected Enrollment

Grade	2010-11	2011-12	2012-13	2013-14	2014-15	2015-16	2016-17	2017-18	2018-19	2019-20
9	290	298	314	341	333	344	339	347	360	396
10	307	297	305	321	350	341	353	347	356	369
11	273	270	261	269	283	308	300	310	305	313
12	254	255	252	244	251	264	287	280	290	285
9 - 12 Total	1,124	1,120	1,132	1,175	1,217	1,257	1,279	1,284	1,311	1,363

Source: DeJONG-HEALY

Jamestown High School Historical Enrollment

Grade	2000-01	2001-02	2002-03	2003-04	2004-05	2005-06	2006-07	2007-08	2008-09	2009-10
9	330	356	370	404	448	459	454	323	331	328
10	331	313	323	358	379	427	440	324	326	312
11	261	300	279	298	328	320	382	327	294	311
12	240	246	284	271	296	318	315	373	310	284
9 - 12 Total	1,162	1,215	1,256	1,331	1,451	1,524	1,591	1,347	1,261	1,235

Source: Williamsburg-James City County School District

Jamestown High School Projected Enrollment

Grade	2010-11	2011-12	2012-13	2013-14	2014-15	2015-16	2016-17	2017-18	2018-19	2019-20
9	318	327	344	374	365	378	372	381	395	434
10	309	299	307	323	352	343	355	349	358	371
11	313	310	300	308	324	353	344	356	350	359
12	310	312	308	298	307	323	352	343	355	349
9 - 12 Total	1,250	1,248	1,259	1,303	1,348	1,397	1,423	1,429	1,458	1,513

Source: DeJONG-HEALY

Williamsburg-James City County Public Schools

Warhill High School Historical Enrollment

Grade	2000-01	2001-02	2002-03	2003-04	2004-05	2005-06	2006-07	2007-08	2008-09	2009-10
9								295	311	312
10								264	291	316
11								194	240	270
12									195	232
9 - 12 Total	0	0	0	0	0	0	0	753	1,037	1,130

Source: Williamsburg-James City County School District

Warhill High School Projected Enrollment

Grade	2010-11	2011-12	2012-13	2013-14	2014-15	2015-16	2016-17	2017-18	2018-19	2019-20
9	302	311	327	356	347	359	354	362	376	413
10	313	302	311	327	356	347	359	354	363	376
11	272	269	260	268	282	307	299	309	304	312
12	254	255	252	244	251	264	287	280	290	285
9 - 12 Total	1,141	1,137	1,150	1,195	1,236	1,277	1,299	1,305	1,333	1,386

Source: DeJONG-HEALY

Williamsburg-James City County Public Schools

In addition to the recommended enrollment projection presented in this report, following are low, moderate, and high enrollment projections developed based on the cohort survival method. The following defines, in terms of economy and housing, the differences between the three projections.

Low Projection

- Higher inflation/interest rates
- Decline in new housing
- Decline in live births

Moderate Projection

- Moderate inflation/interest rates
- Moderate level of new housing
- Live births remain steady

High Projection

- Low inflation/interest rates
- High level of new housing
- Increase in live births

The recommended, or “most likely,” projection falls slightly below the moderate projection. This is due in large part to the decline in the housing market.

The projections range from a low of 12,159 students to a high of 14,191 students in the 2019-20 school year.

Williamsburg-James City County Public Schools

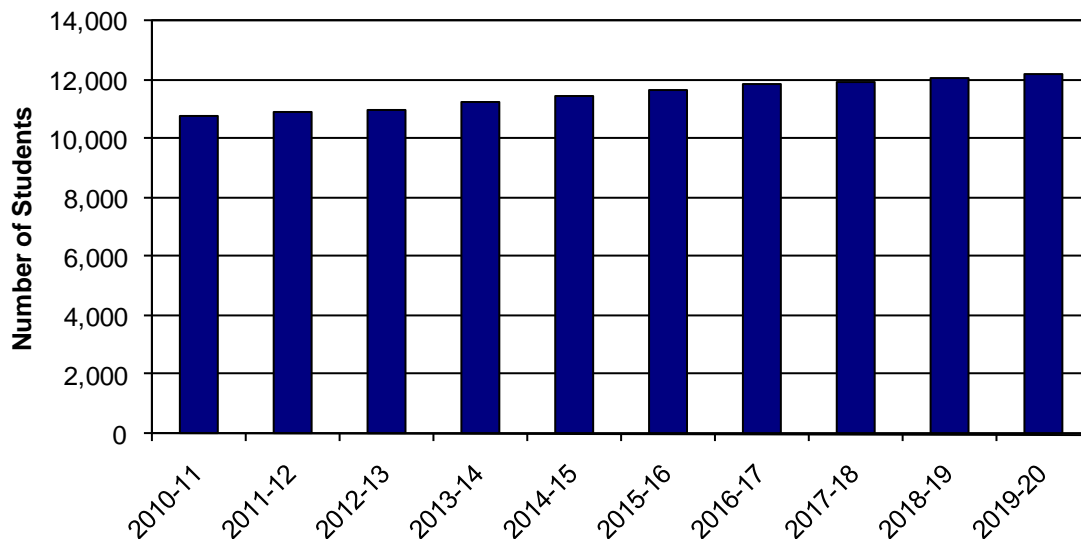
Low Projection

Williamsburg-James City County School District
Projected Enrollment - Low

Grade	2010-11	2011-12	2012-13	2013-14	2014-15	2015-16	2016-17	2017-18	2018-19	2019-20
K	791	827	786	807	799	799	799	799	799	799
1	763	818	856	812	833	826	826	826	826	826
2	760	785	845	881	838	861	851	851	851	851
3	793	801	826	886	926	880	904	893	893	893
4	832	818	825	850	914	956	907	930	922	922
5	840	865	849	857	884	950	993	944	969	958
K - 5 Total	4,779	4,914	4,987	5,093	5,194	5,272	5,280	5,243	5,260	5,249
6	850	829	828	839	847	874	940	982	933	958
7	814	878	855	882	867	874	902	970	1,013	963
8	804	836	879	878	905	889	897	925	995	1,039
6 - 8 Total	2,468	2,543	2,562	2,599	2,619	2,637	2,739	2,877	2,941	2,960
9	905	930	967	1,042	1,015	1,048	1,028	1,037	1,071	1,150
10	914	880	905	941	1,013	987	1,018	999	1,009	1,041
11	842	820	789	811	843	909	886	912	896	905
12	812	802	780	751	771	802	864	842	868	854
9 - 12 Total	3,473	3,432	3,441	3,545	3,642	3,746	3,796	3,790	3,844	3,950
Grand Total	10,720	10,889	10,990	11,237	11,455	11,655	11,815	11,910	12,045	12,159

Source: DeJONG-HEALY

Williamsburg-James City County Public School District
Projected Enrollment



Williamsburg-James City County Public Schools

Baker Elementary School Projected Enrollment - Low

Grade	2010-11	2011-12	2012-13	2013-14	2014-15	2015-16	2016-17	2017-18	2018-19	2019-20
K	83	87	83	85	84	84	84	84	84	84
1	80	86	90	85	88	87	87	87	87	87
2	89	92	99	103	98	101	100	100	100	100
3	95	96	99	106	111	105	108	107	107	107
4	112	110	111	114	123	128	122	125	124	124
5	103	106	104	105	108	116	122	116	119	117
K - 5 Total	562	577	586	598	612	621	623	619	621	619

Source: DeJONG-HEALY

Byrd Elementary School Projected Enrollment - Low

Grade	2010-11	2011-12	2012-13	2013-14	2014-15	2015-16	2016-17	2017-18	2018-19	2019-20
K	79	82	78	80	80	80	80	80	80	80
1	92	99	104	99	101	100	100	100	100	100
2	87	90	97	101	96	99	98	98	98	98
3	91	92	95	102	106	101	104	102	102	102
4	86	85	85	88	95	99	94	96	95	95
5	86	89	87	88	91	98	102	97	100	99
K - 5 Total	521	537	546	558	569	577	578	573	575	574

Source: DeJONG-HEALY

Norge Elementary School Projected Enrollment - Low

Grade	2010-11	2011-12	2012-13	2013-14	2014-15	2015-16	2016-17	2017-18	2018-19	2019-20
K	86	90	86	88	87	87	87	87	87	87
1	100	107	112	106	109	108	108	108	108	108
2	102	106	114	119	113	116	114	114	114	114
3	95	96	99	106	111	105	108	107	107	107
4	113	111	112	115	124	130	123	126	125	125
5	108	111	109	110	114	122	127	121	124	123
K - 5 Total	604	621	632	644	658	668	667	663	665	664

Source: DeJONG-HEALY

James River Elementary School Projected Enrollment - Low

Grade	2010-11	2011-12	2012-13	2013-14	2014-15	2015-16	2016-17	2017-18	2018-19	2019-20
K	92	96	91	94	93	93	93	93	93	93
1	71	76	79	75	77	77	77	77	77	77
2	78	81	87	91	86	88	87	87	87	87
3	78	79	81	87	91	87	89	88	88	88
4	81	79	80	83	89	93	88	91	90	90
5	78	80	78	79	82	88	92	87	89	88
K - 5 Total	478	491	496	509	518	526	526	523	524	523

Source: DeJONG-HEALY

Williamsburg-James City County Public Schools

Whaley Elementary School Projected Enrollment - Low

Grade	2010-11	2011-12	2012-13	2013-14	2014-15	2015-16	2016-17	2017-18	2018-19	2019-20
K	82	86	82	84	83	83	83	83	83	83
1	79	85	89	84	86	85	85	85	85	85
2	58	60	64	67	64	66	65	65	65	65
3	78	79	81	87	91	87	89	88	88	88
4	85	84	84	87	93	98	93	95	94	94
5	87	90	88	89	92	99	103	98	101	100
K - 5 Total	469	484	488	498	509	518	518	514	516	515

Source: DeJONG-HEALY

DJ Montague Elementary School Projected Enrollment - Low

Grade	2010-11	2011-12	2012-13	2013-14	2014-15	2015-16	2016-17	2017-18	2018-19	2019-20
K	108	113	107	110	109	109	109	109	109	109
1	101	108	113	107	110	109	109	109	109	109
2	88	91	98	102	97	100	99	99	99	99
3	97	98	101	108	113	107	110	109	109	109
4	98	97	98	101	108	113	107	110	109	109
5	102	105	103	104	107	115	121	115	118	116
K - 5 Total	594	612	620	632	644	653	655	651	653	651

Source: DeJONG-HEALY

Stonehouse Elementary School Projected Enrollment - Low

Grade	2010-11	2011-12	2012-13	2013-14	2014-15	2015-16	2016-17	2017-18	2018-19	2019-20
K	150	157	149	153	151	151	151	151	151	151
1	133	142	149	142	145	144	144	144	144	144
2	137	141	152	158	151	155	153	153	153	153
3	143	144	149	160	167	159	163	161	161	161
4	147	144	146	150	161	169	160	164	163	163
5	139	143	141	142	146	157	164	156	160	159
K - 5 Total	849	871	886	905	921	935	935	929	932	931

Source: DeJONG-HEALY

Matoaka Elementary School Projected Enrollment - Low

Grade	2010-11	2011-12	2012-13	2013-14	2014-15	2015-16	2016-17	2017-18	2018-19	2019-20
K	111	116	110	113	112	112	112	112	112	112
1	107	115	120	114	117	116	116	116	116	116
2	121	124	134	140	133	136	135	135	135	135
3	116	117	121	130	136	129	133	131	131	131
4	110	108	109	112	121	126	120	123	122	122
5	137	141	139	140	144	155	162	154	158	156
K - 5 Total	702	721	733	749	763	774	778	771	774	772

Source: DeJONG-HEALY

Williamsburg-James City County Public Schools

Toano Middle School Projected Enrollment - Low

Grade	2010-11	2011-12	2012-13	2013-14	2014-15	2015-16	2016-17	2017-18	2018-19	2019-20
6	315	307	290	311	314	324	348	364	346	355
7	301	324	315	326	320	323	333	358	374	356
8	286	297	299	312	322	316	319	329	354	370
6 - 8 Total	902	928	904	949	956	963	1,000	1,051	1,074	1,081

Source: DeJONG-HEALY

James Blair Middle School Projected Enrollment - Low

Grade	2010-11	2011-12	2012-13	2013-14	2014-15	2015-16	2016-17	2017-18	2018-19	2019-20
6	218	213	219	215	217	224	241	252	239	246
7	228	246	240	247	243	245	253	272	284	270
8	228	237	255	249	256	252	254	262	282	294
6 - 8 Total	674	696	714	711	716	721	748	786	805	810

Source: DeJONG-HEALY

Berkeley Middle School Projected Enrollment - Low

Grade	2010-11	2011-12	2012-13	2013-14	2014-15	2015-16	2016-17	2017-18	2018-19	2019-20
6	317	309	319	313	316	326	351	366	348	357
7	285	308	300	309	304	306	316	340	355	337
8	290	302	325	317	327	321	324	334	359	375
6 - 8 Total	892	919	944	939	947	953	991	1,040	1,062	1,069

Source: DeJONG-HEALY

Lafayette High School Projected Enrollment - Low

Grade	2010-11	2011-12	2012-13	2013-14	2014-15	2015-16	2016-17	2017-18	2018-19	2019-20
9	288	296	308	332	323	334	327	330	341	366
10	302	291	299	311	335	326	336	330	333	344
11	268	261	251	258	268	289	282	290	285	288
12	252	249	242	233	239	249	268	261	269	265
9 - 12 Total	1,110	1,097	1,100	1,134	1,165	1,198	1,213	1,211	1,228	1,263

Source: DeJONG-HEALY

Jamestown High School Projected Enrollment - Low

Grade	2010-11	2011-12	2012-13	2013-14	2014-15	2015-16	2016-17	2017-18	2018-19	2019-20
9	316	325	338	364	355	366	359	362	374	402
10	304	293	301	313	337	328	339	332	336	346
11	307	299	288	296	308	332	323	333	327	330
12	308	304	296	285	293	304	328	320	330	324
9 - 12 Total	1,235	1,221	1,223	1,258	1,293	1,330	1,349	1,347	1,367	1,402

Source: DeJONG-HEALY

Williamsburg-James City County Public Schools

Warhill High School Projected Enrollment - Low

Grade	2010-11	2011-12	2012-13	2013-14	2014-15	2015-16	2016-17	2017-18	2018-19	2019-20
9	301	309	321	346	337	348	342	345	356	382
10	308	296	305	317	341	333	343	337	340	351
11	267	260	250	257	267	288	281	289	284	287
12	252	249	242	233	239	249	268	261	269	265
9 - 12 Total	1,128	1,114	1,118	1,153	1,184	1,218	1,234	1,232	1,249	1,285

Source: DeJONG-HEALY

Williamsburg-James City County Public Schools

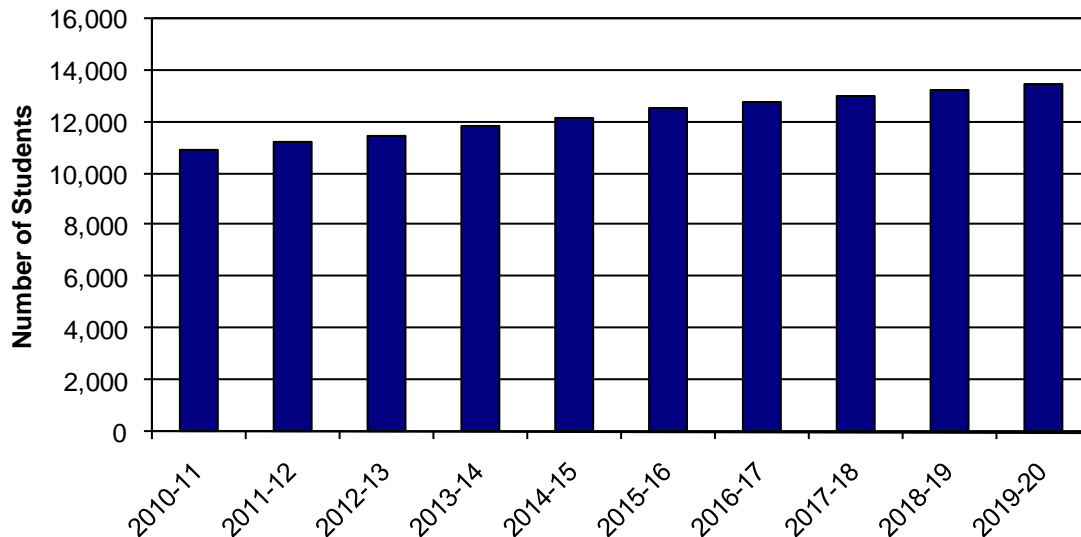
Moderate Projection

Williamsburg-James City County School District
Projected Enrollment - Moderate

Grade	2010-11	2011-12	2012-13	2013-14	2014-15	2015-16	2016-17	2017-18	2018-19	2019-20
K	820	856	814	835	826	826	826	826	826	826
1	770	856	894	849	872	863	863	863	863	863
2	775	809	896	938	891	914	905	905	905	905
3	801	820	854	953	994	945	970	961	961	961
4	833	827	849	885	986	1,029	979	1,004	992	992
5	850	880	873	896	932	1,038	1,085	1,030	1,059	1,047
K - 5 Total	4,849	5,048	5,180	5,356	5,501	5,615	5,628	5,589	5,606	5,594
6	866	855	858	877	900	939	1,045	1,091	1,037	1,064
7	825	904	893	924	915	939	980	1,090	1,139	1,082
8	812	854	922	925	956	947	972	1,014	1,130	1,180
6 - 8 Total	2,503	2,613	2,673	2,726	2,771	2,825	2,997	3,195	3,306	3,326
9	915	948	999	1,095	1,082	1,119	1,108	1,137	1,187	1,321
10	932	908	941	990	1,086	1,074	1,110	1,100	1,128	1,178
11	859	855	830	861	906	994	981	1,016	1,006	1,033
12	818	823	818	796	825	867	951	941	973	964
9 - 12 Total	3,524	3,534	3,588	3,742	3,899	4,054	4,150	4,194	4,294	4,496
Grand Total	10,876	11,195	11,441	11,824	12,171	12,494	12,775	12,978	13,206	13,416

Source: DeJONG-HEALY

Williamsburg-James City County Public School District
Projected Enrollment



Williamsburg-James City County Public Schools

Baker Elementary School Projected Enrollment - Moderate

Grade	2010-11	2011-12	2012-13	2013-14	2014-15	2015-16	2016-17	2017-18	2018-19	2019-20
K	86	90	86	88	87	87	87	87	87	87
1	81	90	94	89	92	91	91	91	91	91
2	91	95	105	110	105	107	106	106	106	106
3	96	98	102	114	119	113	116	115	115	115
4	112	111	114	119	132	138	132	135	133	133
5	104	108	107	110	114	127	133	126	130	128
K - 5 Total	570	592	608	630	649	663	665	660	662	660

Source: DeJONG-HEALY

Byrd Elementary School Projected Enrollment - Moderate

Grade	2010-11	2011-12	2012-13	2013-14	2014-15	2015-16	2016-17	2017-18	2018-19	2019-20
K	82	85	81	83	82	82	82	82	82	82
1	93	104	108	103	106	105	105	105	105	105
2	89	93	103	108	102	105	104	104	104	104
3	92	94	98	109	114	108	111	110	110	110
4	86	86	88	92	102	106	101	104	103	103
5	87	90	90	92	96	107	111	106	109	108
K - 5 Total	529	552	568	587	602	613	614	611	613	612

Source: DeJONG-HEALY

Norge Elementary School Projected Enrollment - Moderate

Grade	2010-11	2011-12	2012-13	2013-14	2014-15	2015-16	2016-17	2017-18	2018-19	2019-20
K	90	94	89	91	90	90	90	90	90	90
1	101	112	117	111	114	113	113	113	113	113
2	104	109	121	126	120	123	122	122	122	122
3	96	98	102	114	119	113	116	115	115	115
4	113	112	115	120	134	140	133	136	135	135
5	109	113	112	115	120	133	139	132	136	134
K - 5 Total	613	638	656	677	697	712	713	708	711	709

Source: DeJONG-HEALY

James River Elementary School Projected Enrollment - Moderate

Grade	2010-11	2011-12	2012-13	2013-14	2014-15	2015-16	2016-17	2017-18	2018-19	2019-20
K	95	99	94	97	96	96	96	96	96	96
1	71	79	83	79	81	80	80	80	80	80
2	80	83	92	96	92	94	93	93	93	93
3	79	81	84	94	98	93	96	95	95	95
4	81	80	83	86	96	100	95	98	97	97
5	79	81	81	83	86	96	100	95	98	97
K - 5 Total	485	503	517	535	549	559	560	557	559	558

Source: DeJONG-HEALY

Williamsburg-James City County Public Schools

Whaley Elementary School Projected Enrollment - Moderate

Grade	2010-11	2011-12	2012-13	2013-14	2014-15	2015-16	2016-17	2017-18	2018-19	2019-20
K	85	89	85	87	86	86	86	86	86	86
1	80	89	93	88	90	89	89	89	89	89
2	59	62	68	71	68	70	69	69	69	69
3	79	81	84	94	98	93	96	95	95	95
4	85	85	87	90	101	105	100	103	101	101
5	88	91	91	93	97	108	113	107	110	109
K - 5 Total	476	497	508	523	540	551	553	549	550	549

Source: DeJONG-HEALY

DJ Montague Elementary School Projected Enrollment - Moderate

Grade	2010-11	2011-12	2012-13	2013-14	2014-15	2015-16	2016-17	2017-18	2018-19	2019-20
K	112	117	111	114	113	113	113	113	113	113
1	102	113	118	112	115	114	114	114	114	114
2	90	94	104	109	103	106	105	105	105	105
3	98	100	104	116	121	115	118	117	117	117
4	99	98	100	105	117	122	116	119	117	117
5	103	107	106	109	113	126	132	125	128	127
K - 5 Total	604	629	643	665	682	696	698	693	694	693

Source: DeJONG-HEALY

Stonehouse Elementary School Projected Enrollment - Moderate

Grade	2010-11	2011-12	2012-13	2013-14	2014-15	2015-16	2016-17	2017-18	2018-19	2019-20
K	155	162	154	158	156	156	156	156	156	156
1	134	149	156	148	152	150	150	150	150	150
2	139	145	161	169	160	164	163	163	163	163
3	144	148	154	172	179	171	175	173	173	173
4	147	146	150	156	174	182	173	177	175	175
5	141	146	144	148	154	172	180	171	175	173
K - 5 Total	860	896	919	951	975	995	997	990	992	990

Source: DeJONG-HEALY

Matoaka Elementary School Projected Enrollment - Moderate

Grade	2010-11	2011-12	2012-13	2013-14	2014-15	2015-16	2016-17	2017-18	2018-19	2019-20
K	115	120	114	117	116	116	116	116	116	116
1	108	120	125	119	122	121	121	121	121	121
2	123	128	142	149	141	145	143	143	143	143
3	117	120	126	140	146	139	142	141	141	141
4	110	109	112	117	130	136	129	132	131	131
5	139	144	142	146	152	169	177	168	173	171
K - 5 Total	712	741	761	788	807	826	828	821	825	823

Source: DeJONG-HEALY

Williamsburg-James City County Public Schools

Toano Middle School Projected Enrollment - Moderate

Grade	2010-11	2011-12	2012-13	2013-14	2014-15	2015-16	2016-17	2017-18	2018-19	2019-20
6	321	317	301	325	333	348	387	404	384	394
7	305	334	330	341	338	347	362	403	421	400
8	289	304	319	329	340	337	346	361	402	420
6 - 8 Total	915	955	950	995	1,011	1,032	1,095	1,168	1,207	1,214

Source: DeJONG-HEALY

James Blair Middle School Projected Enrollment - Moderate

Grade	2010-11	2011-12	2012-13	2013-14	2014-15	2015-16	2016-17	2017-18	2018-19	2019-20
6	222	219	227	225	231	241	268	280	266	273
7	231	253	250	259	256	263	275	305	319	303
8	230	242	265	262	271	268	275	287	320	334
6 - 8 Total	683	714	742	746	758	772	818	872	905	910

Source: DeJONG-HEALY

Berkeley Middle School Projected Enrollment - Moderate

Grade	2010-11	2011-12	2012-13	2013-14	2014-15	2015-16	2016-17	2017-18	2018-19	2019-20
6	323	319	330	327	336	350	390	407	387	397
7	289	317	313	324	321	329	343	382	399	379
8	293	308	338	334	345	342	351	366	408	426
6 - 8 Total	905	944	981	985	1,002	1,021	1,084	1,155	1,194	1,202

Source: DeJONG-HEALY

Lafayette High School Projected Enrollment - Moderate

Grade	2010-11	2011-12	2012-13	2013-14	2014-15	2015-16	2016-17	2017-18	2018-19	2019-20
9	291	302	318	349	345	356	353	362	378	421
10	308	300	311	327	359	355	367	363	373	389
11	273	272	264	274	288	316	312	323	320	329
12	254	255	254	247	256	269	295	292	302	299
9 - 12 Total	1,126	1,129	1,147	1,197	1,248	1,296	1,327	1,340	1,373	1,438

Source: DeJONG-HEALY

Jamestown High School Projected Enrollment - Moderate

Grade	2010-11	2011-12	2012-13	2013-14	2014-15	2015-16	2016-17	2017-18	2018-19	2019-20
9	320	331	349	382	378	391	387	397	415	461
10	310	302	313	329	361	357	369	366	375	392
11	314	312	303	314	331	363	358	371	367	377
12	310	313	310	302	313	329	361	357	369	366
9 - 12 Total	1,254	1,258	1,275	1,327	1,383	1,440	1,475	1,491	1,526	1,596

Source: DeJONG-HEALY

Williamsburg-James City County Public Schools

Warhill High School
Projected Enrollment - Moderate

Grade	2010-11	2011-12	2012-13	2013-14	2014-15	2015-16	2016-17	2017-18	2018-19	2019-20
9	304	315	332	364	359	372	368	378	394	439
10	314	306	317	334	366	362	374	371	380	397
11	272	271	263	273	287	315	311	322	319	327
12	254	255	254	247	256	269	295	292	302	299
9 - 12 Total	1,144	1,147	1,166	1,218	1,268	1,318	1,348	1,363	1,395	1,462

Source: DeJONG-HEALY

Williamsburg-James City County Public Schools

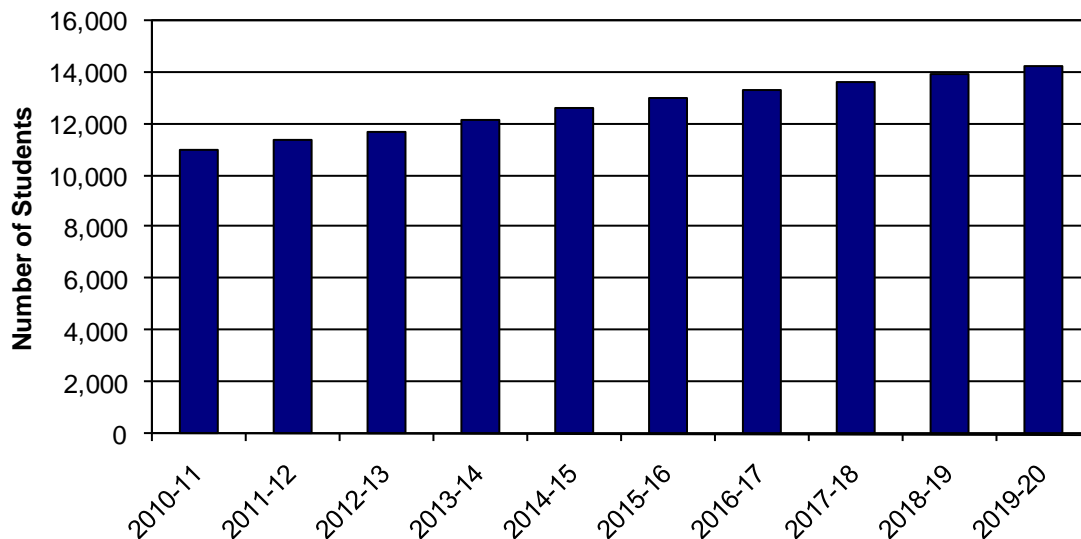
High Projection

Williamsburg-James City County School District
Projected Enrollment - High

Grade	2010-11	2011-12	2012-13	2013-14	2014-15	2015-16	2016-17	2017-18	2018-19	2019-20
K	845	885	841	862	854	854	854	854	854	854
1	771	885	925	879	901	892	892	892	892	892
2	777	811	931	973	926	950	940	940	940	940
3	811	834	871	1,002	1,045	994	1,019	1,009	1,009	1,009
4	838	840	864	903	1,038	1,083	1,031	1,057	1,047	1,047
5	857	892	896	922	963	1,105	1,154	1,098	1,127	1,115
K - 5 Total	4,899	5,147	5,328	5,541	5,727	5,878	5,890	5,850	5,869	5,857
6	869	866	877	901	929	971	1,115	1,166	1,107	1,136
7	828	910	913	942	945	974	1,017	1,168	1,221	1,161
8	815	862	941	945	981	983	1,014	1,059	1,216	1,271
6 - 8 Total	2,512	2,638	2,731	2,788	2,855	2,928	3,146	3,393	3,544	3,568
9	919	958	1,011	1,112	1,111	1,152	1,156	1,191	1,243	1,429
10	935	914	953	1,005	1,104	1,104	1,145	1,148	1,182	1,235
11	861	855	836	871	921	1,012	1,010	1,049	1,052	1,084
12	825	832	828	809	844	890	980	977	1,015	1,018
9 - 12 Total	3,540	3,559	3,628	3,797	3,980	4,158	4,291	4,365	4,492	4,766
Grand Total	10,951	11,344	11,687	12,126	12,562	12,964	13,327	13,608	13,905	14,191

Source: DeJONG-HEALY

Williamsburg-James City County Public School District
Projected Enrollment



Williamsburg-James City County Public Schools

Baker Elementary School Projected Enrollment - High

Grade	2010-11	2011-12	2012-13	2013-14	2014-15	2015-16	2016-17	2017-18	2018-19	2019-20
K	89	93	88	91	90	90	90	90	90	90
1	81	93	97	92	95	94	94	94	94	94
2	91	95	109	114	109	111	110	110	110	110
3	97	100	104	120	125	119	122	121	121	121
4	113	113	116	121	140	146	139	142	141	141
5	105	109	110	113	118	135	141	135	138	137
K - 5 Total	576	603	624	651	677	695	696	692	694	693

Source: DeJONG-HEALY

Byrd Elementary School Projected Enrollment - High

Grade	2010-11	2011-12	2012-13	2013-14	2014-15	2015-16	2016-17	2017-18	2018-19	2019-20
K	84	88	84	86	85	85	85	85	85	85
1	93	107	112	107	109	108	108	108	108	108
2	89	93	107	112	106	109	108	108	108	108
3	93	96	100	115	120	114	117	116	116	116
4	87	87	90	93	107	112	107	109	108	108
5	88	92	92	95	99	114	119	113	116	115
K - 5 Total	534	563	585	608	626	642	644	639	641	640

Source: DeJONG-HEALY

Norge Elementary School Projected Enrollment - High

Grade	2010-11	2011-12	2012-13	2013-14	2014-15	2015-16	2016-17	2017-18	2018-19	2019-20
K	92	97	92	94	93	93	93	93	93	93
1	101	116	121	115	118	117	117	117	117	117
2	105	109	125	131	125	128	126	126	126	126
3	97	100	104	120	125	119	122	121	121	121
4	114	114	117	123	141	147	140	143	142	142
5	110	114	115	118	124	142	148	141	145	143
K - 5 Total	619	650	674	701	726	746	746	741	744	742

Source: DeJONG-HEALY

James River Elementary School Projected Enrollment - High

Grade	2010-11	2011-12	2012-13	2013-14	2014-15	2015-16	2016-17	2017-18	2018-19	2019-20
K	98	103	98	100	99	99	99	99	99	99
1	72	82	86	82	84	83	83	83	83	83
2	80	83	96	100	95	98	97	97	97	97
3	80	82	86	99	103	98	100	99	99	99
4	81	82	84	88	101	105	100	103	102	102
5	79	82	83	85	89	102	107	101	104	103
K - 5 Total	490	514	533	554	571	585	586	582	584	583

Source: DeJONG-HEALY

Williamsburg-James City County Public Schools

Whaley Elementary School Projected Enrollment - High

Grade	2010-11	2011-12	2012-13	2013-14	2014-15	2015-16	2016-17	2017-18	2018-19	2019-20
K	88	92	87	89	89	89	89	89	89	89
1	80	92	96	91	93	92	92	92	92	92
2	59	62	71	74	71	72	72	72	72	72
3	80	82	86	99	103	98	100	99	99	99
4	86	86	88	92	106	111	105	108	107	107
5	89	93	93	96	100	115	120	114	117	116
K - 5 Total	482	507	521	541	562	577	578	574	576	575

Source: DeJONG-HEALY

DJ Montague Elementary School Projected Enrollment - High

Grade	2010-11	2011-12	2012-13	2013-14	2014-15	2015-16	2016-17	2017-18	2018-19	2019-20
K	115	121	115	118	116	116	116	116	116	116
1	102	117	122	116	119	118	118	118	118	118
2	90	94	108	113	107	110	109	109	109	109
3	99	102	106	122	128	121	124	123	123	123
4	99	99	102	107	123	128	122	125	124	124
5	104	108	109	112	117	134	140	133	137	135
K - 5 Total	609	641	662	688	710	727	729	724	727	725

Source: DeJONG-HEALY

Stonehouse Elementary School Projected Enrollment - High

Grade	2010-11	2011-12	2012-13	2013-14	2014-15	2015-16	2016-17	2017-18	2018-19	2019-20
K	160	167	159	163	162	162	162	162	162	162
1	134	154	161	153	157	155	155	155	155	155
2	140	146	167	175	166	171	169	169	169	169
3	146	150	157	180	188	179	184	182	182	182
4	148	148	153	160	183	191	182	187	185	185
5	142	148	148	153	159	183	191	182	186	184
K - 5 Total	870	913	945	984	1,015	1,041	1,043	1,037	1,039	1,037

Source: DeJONG-HEALY

Matoaka Elementary School Projected Enrollment - High

Grade	2010-11	2011-12	2012-13	2013-14	2014-15	2015-16	2016-17	2017-18	2018-19	2019-20
K	119	124	118	121	120	120	120	120	120	120
1	108	124	130	123	126	125	125	125	125	125
2	123	129	148	154	147	151	149	149	149	149
3	119	122	128	147	153	146	150	148	148	148
4	110	111	114	119	137	143	136	140	138	138
5	140	146	146	150	157	180	188	179	184	182
K - 5 Total	719	756	784	814	840	865	868	861	864	862

Source: DeJONG-HEALY

Williamsburg-James City County Public Schools

Toano Middle School Projected Enrollment - High

Grade	2010-11	2011-12	2012-13	2013-14	2014-15	2015-16	2016-17	2017-18	2018-19	2019-20
6	322	321	311	334	344	360	413	432	410	421
7	306	336	341	348	349	360	376	432	451	429
8	290	307	331	336	349	350	361	377	433	452
6 - 8 Total	918	964	983	1,018	1,042	1,070	1,150	1,241	1,294	1,302

Source: DeJONG-HEALY

James Blair Middle School Projected Enrollment - High

Grade	2010-11	2011-12	2012-13	2013-14	2014-15	2015-16	2016-17	2017-18	2018-19	2019-20
6	223	222	231	231	238	249	286	299	284	291
7	232	255	254	264	265	273	285	327	342	325
8	231	244	268	268	278	278	287	300	344	360
6 - 8 Total	686	721	753	763	781	800	858	926	970	976

Source: DeJONG-HEALY

Berkeley Middle School Projected Enrollment - High

Grade	2010-11	2011-12	2012-13	2013-14	2014-15	2015-16	2016-17	2017-18	2018-19	2019-20
6	324	323	335	336	347	362	416	435	413	424
7	290	319	318	330	331	341	356	409	428	407
8	294	311	342	341	354	355	366	382	439	459
6 - 8 Total	908	953	995	1,007	1,032	1,058	1,138	1,226	1,280	1,290

Source: DeJONG-HEALY

Lafayette High School Projected Enrollment - High

Grade	2010-11	2011-12	2012-13	2013-14	2014-15	2015-16	2016-17	2017-18	2018-19	2019-20
9	293	305	322	354	354	367	368	379	396	455
10	309	302	315	332	365	365	378	379	391	408
11	274	272	266	277	293	322	321	334	335	345
12	256	258	257	251	262	276	304	303	315	316
9 - 12 Total	1,132	1,137	1,160	1,214	1,274	1,330	1,371	1,395	1,437	1,524

Source: DeJONG-HEALY

Jamestown High School Projected Enrollment - High

Grade	2010-11	2011-12	2012-13	2013-14	2014-15	2015-16	2016-17	2017-18	2018-19	2019-20
9	321	335	353	388	388	402	404	416	434	499
10	311	304	317	334	367	367	381	382	393	411
11	314	312	305	318	336	369	369	383	384	396
12	313	316	314	307	320	338	372	371	385	386
9 - 12 Total	1,259	1,267	1,289	1,347	1,411	1,476	1,526	1,552	1,596	1,692

Source: DeJONG-HEALY

Williamsburg-James City County Public Schools

Warhill High School Projected Enrollment - High

Grade	2010-11	2011-12	2012-13	2013-14	2014-15	2015-16	2016-17	2017-18	2018-19	2019-20
9	305	318	336	370	369	383	384	396	413	475
10	315	308	321	339	372	372	386	387	398	416
11	273	271	265	276	292	321	320	332	333	343
12	256	258	257	251	262	276	304	303	315	316
9 - 12 Total	1,149	1,155	1,179	1,236	1,295	1,352	1,394	1,418	1,459	1,550

Source: DeJONG-HEALY

CONCLUSION

The enrollment projections presented in this report were developed using the cohort-survival methodology while incorporating housing and geographic information system data.

As with any projection, the District should pay close attention to live birth counts, enrollment in elementary schools, and in/out migration patterns. Each of these factors will have an impact on future student enrollment.

DeJONG-HEALY is pleased to have had the opportunity to provide the District with enrollment projection services. We hope this document will provide the necessary information to make informed decisions about the future of the Williamsburg-James City County Public Schools.