



*Plan to Empower.*

# REPORT



Enrollment Projections  
October 2010

## ACKNOWLEDGEMENTS

---

**DeJONG-HEALY** would like to extend our appreciation to the Williamsburg-James City County Public Schools for selecting us to assist them in developing these enrollment projections. In addition, thank you to Scott Burckbuchler and Rita Roney for providing information necessary in the completion of this report.

As a consulting team, we appreciate this opportunity to serve your school community as you embark on your vision for the future of education in the Williamsburg-James City County Public Schools.

Tracy Healy  
*President*

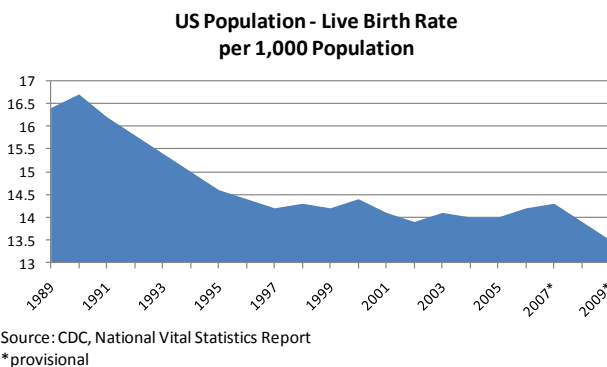
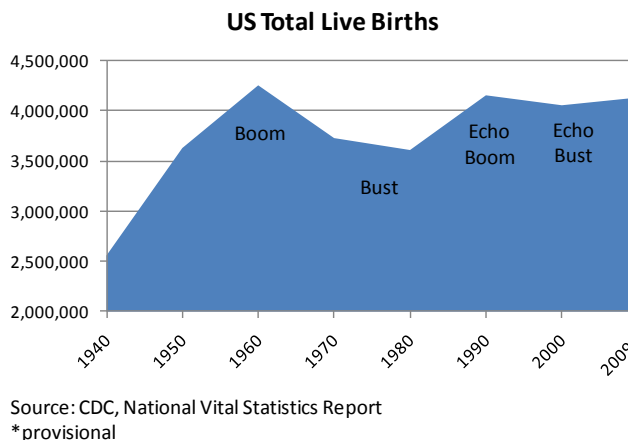
Ann Hussey  
*Project Director*

## Williamsburg-James City County Public Schools

### ENROLLMENT PROJECTION METHODOLOGIES

#### Introduction

Tracing the landscape of the country's public school enrollment back over the past fifty years reveals demographic, economic, and social changes. The United States as a whole continues to undergo major shifts in public student enrollment, due in large part to past events including the baby boom, the availability and use of birth control, and the development of suburbs. The baby boom of the late 1940s and 50s was followed by the baby bust of the 1960s and 70s. This gave rise to the echo baby boom of the 1980s, producing children who primarily graduated in the late 90s through 2007.



Nationwide, districts continue to experience the effects of the echo baby bust of the 1990s. From the 1950s to the 1970s, a dramatic downsizing of the family unit occurred. A direct result was the declining school enrollment of the 1970s and 1980s. As of the 2000 Census, the size of a family was at an all-time low of 3.14 persons. According to the American Community Survey 2009 Estimate, the average family size increased to 3.23 persons per household.

The live birth rate increased for the first time in several years in 1998 and increased again in 2000. However, the birth rate resumed a descending pattern in 2001 and reached an all-time low of 13.5 in 2009. When projecting future enrollments, it will be vital to track the number of live births, the amount of new housing activity, and the change in household composition. In addition, any of the following factors could cause a significant change in projected student enrollments:

## Williamsburg-James City County Public Schools

- ▶ Boundary adjustments
- ▶ New school openings
- ▶ Changes/additions in program offerings
- ▶ Preschool programs
- ▶ Change in grade configuration
- ▶ Interest rates/unemployment shifts
- ▶ Magnet/Charter/Private school opening or closure
- ▶ Zoning changes
- ▶ Unplanned new housing activity
- ▶ Planned, but not built, housing

Obviously, certain factors can be gauged and planned for far better than others. For instance, it may be relatively straightforward to gather housing data from local builders regarding the total number of lots in a planned subdivision and calculate the potential student yield. However, planning for changes in the unemployment rate, and how these may either boost or reduce public school enrollment, proves more difficult. In any case, it is essential to gather a wide variety of information in preparation for producing enrollment projections.

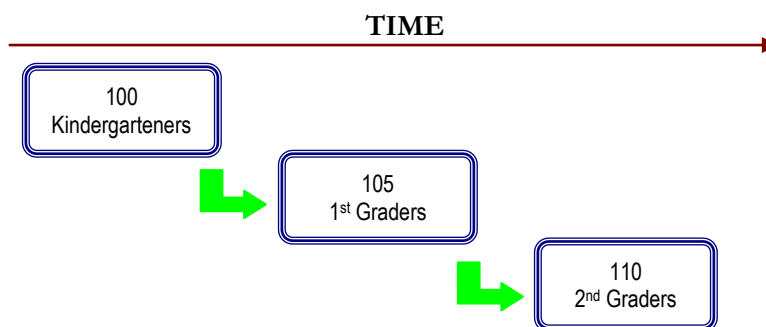
When looking ahead at a school district's enrollment over the next two, five, or ten years, it is helpful to approach the process from a global perspective. For example: How many new homes have been constructed each year? How many births have occurred each year in relation to the resident population? Is housing experiencing a turnover – if so, what is the composition of families moving in/out? Are more or less students attending private school or being home-schooled? What has the unemployment rate trend been over the past ten years? What new educational policies are in place now that could affect student enrollment figures?

The data sets generated from questions such as these have led to the development of general methodologies to project future student enrollments. They are as follows:

## Williamsburg-James City County Public Schools

**Cohort Survival Method**

A cohort is a group of persons [in this case, students]. The cohort survival projection methodology uses previous live birth data and historical student enrollments to “age” a known population or cohort throughout the school grades. For instance, a cohort begins when a group of kindergarteners enrolls in grade K and moves to first grade the following year, second grade the next year, and so on.



A “survival ratio” is developed to track how this group of students grew or shrunk in number as they moved through the grade levels. By developing survival ratios for each grade transition [i.e., 2nd to 3rd grade] over a ten-year period of time, patterns emerge and can be folded into projections by using the survival ratios as a multiplier.

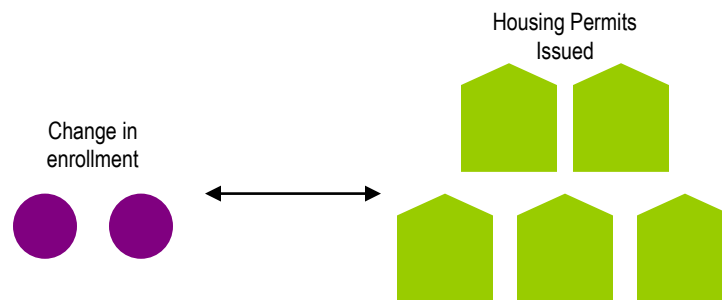
For example, if student enrollment has consistently increased from the 8th to the 9th grade over the past ten years, the survival ratio would be greater than 100% and could be multiplied by the current 8th grade to develop a projection for next year's 9th grade. This methodology can be carried through to develop ten years of projection figures. Because there is not a grade cohort to follow for students coming into kindergarten, live birth counts are used to develop a survival ratio. Babies born five years previous to the kindergarten class are compared in number, and a ratio can be developed to project future kindergarten enrollments.

The cohort survival method is useful in areas where population is stable [relatively flat, growing steadily, or declining steadily], and where there have been no significant fluctuations in enrollment, births, and housing patterns from year to year.

## Williamsburg-James City County Public Schools

### Housing

Enrollment projections can also be determined by analyzing the housing data for the areas that make up a school district. Yield factors can be established by comparing the historic change in enrollment from year to year divided by the total number of building or occupancy permits issued. For example, if student enrollment has increased by approximately 100 students each year and approximately 200 building permits have been issued each year for the past ten years, then the yield factor would be approximately .5 students per building permit.



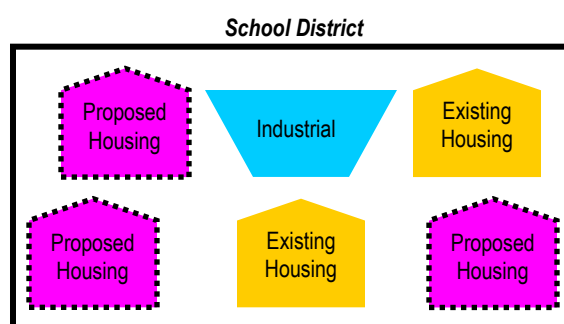
Once yield factors are established, the number of new students per year can be estimated by multiplying the yield factor by the number of projected new housing units. This method is effective when the rate of student enrollment far exceeds the live birth rate.

If housing demolitions are occurring in a district, these must also be taken into account. For instance, if housing demolitions/withdrawals have increased rapidly over recent years while new housing starts have remained relatively constant over many years, the conclusion may be that some of the new housing starts will simply be replacements for the families displaced by the demolitions. Of course, housing value and household composition would need to be further analyzed to confirm that this is indeed the case. It is possible that enrollment may remain flat or even decline even though there is new housing occurring in the area.

## Williamsburg-James City County Public Schools

**Land-Saturation Analysis**

Housing data also drives the land-saturation analysis enrollment methodology. In areas where there is a high rate of development and the future development patterns in the area are clear, a “build-out” scenario can be developed. The scenario takes into consideration the remaining acreage to be developed, planned rate of completion, zoning policies, density per acre, type of housing, and ratios of school-age children per household type. This method is particularly useful in areas experiencing rapid growth.

**Geographic Information Systems**

The need for better tools and easier manipulation of data has led to a new industry standard in planning – GIS [Geographic Information Systems]. GIS technology allows school districts to quickly analyze countless data sets including birth data, housing information, and enrollment statistics. When paired with enrollment projections, GIS becomes an invaluable information-management and decision-making tool. For example, because data can be displayed visually, issues such as where new facilities should be located and how neighborhood schools affect the district become much clearer. Also, the software can be used to manage specific building data, becoming a maintenance-managing tool as well. Often, county or city offices are already implementing GIS technology and data can be shared and expanded among these organizations in the district. The opportunity also exists for collaboration with other agencies to share in the cost of initial implementation of GIS.

## Williamsburg-James City County Public Schools

### HISTORICAL ENROLLMENT

Over the past ten years, student enrollment in the Williamsburg-James City County Public Schools has increased by 2,157 students in grades K – 12. Total enrollment for the 2010-11 school year is 10,564, an increase of 56 students from the previous school year.

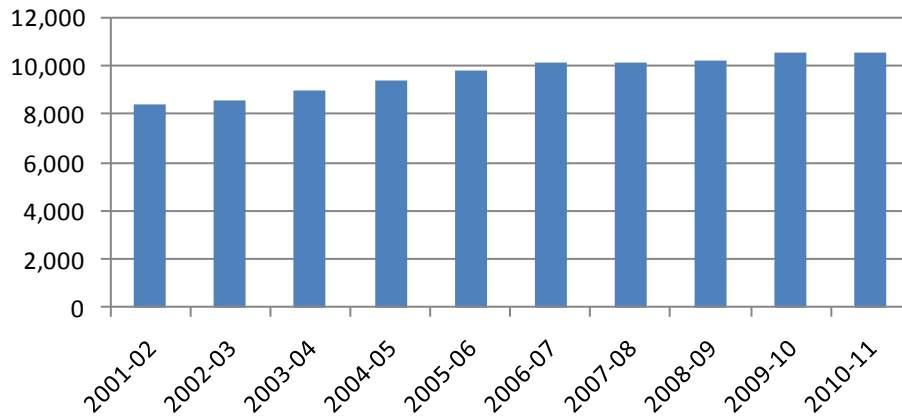
The following table and graphs illustrate the District's enrollment history from 2001-02 through 2010-11.

| Williamsburg-James City County School District |              |              |              |              |              |               |               |               |               |               |
|--|--------------|--------------|--------------|--------------|--------------|---------------|---------------|---------------|---------------|---------------|
| Historical Enrollment                          |              |              |              |              |              |               |               |               |               |               |
| Grade  | 2001-02      | 2002-03      | 2003-04      | 2004-05      | 2005-06      | 2006-07       | 2007-08       | 2008-09       | 2009-10       | 2010-11       |
| K  | 546          | 575          | 605          | 697          | 704          | 731           | 689           | 702           | 733           | 684           |
| 1  | 619          | 552          | 603          | 655          | 766          | 740           | 732           | 712           | 734           | 756           |
| 2  | 649          | 639          | 623          | 643          | 689          | 804           | 736           | 762           | 750           | 777           |
| 3  | 633          | 695          | 692          | 665          | 718          | 716           | 802           | 776           | 803           | 778           |
| 4  | 662          | 644          | 730          | 731          | 693          | 741           | 736           | 829           | 803           | 813           |
| 5  | 682          | 687          | 691          | 779          | 767          | 738           | 749           | 787           | 857           | 822           |
| <b>K - 5 Total</b>                             | <b>3,791</b> | <b>3,792</b> | <b>3,944</b> | <b>4,170</b> | <b>4,337</b> | <b>4,470</b>  | <b>4,444</b>  | <b>4,568</b>  | <b>4,680</b>  | <b>4,630</b>  |
| 6  | 702          | 683          | 708          | 730          | 810          | 768           | 717           | 749           | 788           | 861           |
| 7  | 643          | 726          | 756          | 734          | 765          | 820           | 775           | 748           | 782           | 813           |
| 8  | 665          | 678          | 742          | 781          | 760          | 793           | 835           | 786           | 781           | 779           |
| <b>6 - 8 Total</b>                             | <b>2,010</b> | <b>2,087</b> | <b>2,206</b> | <b>2,245</b> | <b>2,335</b> | <b>2,381</b>  | <b>2,327</b>  | <b>2,283</b>  | <b>2,351</b>  | <b>2,453</b>  |
| 9  | 724          | 768          | 807          | 883          | 908          | 893           | 898           | 956           | 939           | 891           |
| 10   | 722          | 703          | 742          | 801          | 878          | 881           | 887           | 901           | 938           | 904           |
| 11   | 605          | 629          | 636          | 677          | 693          | 812           | 793           | 785           | 852           | 853           |
| 12   | 555          | 574          | 624          | 626          | 669          | 668           | 788           | 755           | 748           | 833           |
| <b>9 - 12 Total</b>                            | <b>2,606</b> | <b>2,674</b> | <b>2,809</b> | <b>2,987</b> | <b>3,148</b> | <b>3,254</b>  | <b>3,366</b>  | <b>3,397</b>  | <b>3,477</b>  | <b>3,481</b>  |
| <b>Grand Total</b>                             | <b>8,407</b> | <b>8,553</b> | <b>8,959</b> | <b>9,402</b> | <b>9,820</b> | <b>10,105</b> | <b>10,137</b> | <b>10,248</b> | <b>10,508</b> | <b>10,564</b> |

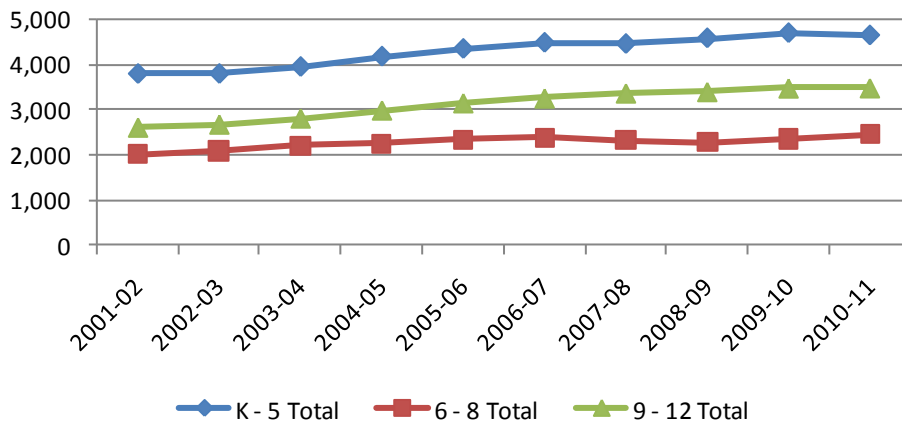
Source: Williamsburg-James City County School District

Williamsburg-James City County Public Schools

**Williamsburg-James City County School District  
Historical Enrollment**



**Williamsburg-James City County School District  
Historical Enrollment by Grade Group**



## Williamsburg-James City County Public Schools

### ACTUAL VERSUS PROJECTED ENROLLMENT

The following chart compares the previously developed enrollment projections, by school, versus the actual enrollments for the 2010-11 school year. In the 2010-11 school year, Blayton Elementary and Hornsby Middle schools opened, while James Blair Middle School closed. Actual vs. projected enrollment for the 2010-11 school year was within 254 students, or 2.4 percent.

| School                 | 2010-11       | 2010-11 Most Likely Projection | Difference  | % Difference  |
|------------------------|---------------|--------------------------------|-------------|---------------|
| Baker Elementary       | 480           | 566                            | -86         | -17.92%       |
| Blayton Elementary     | 420           |                                | 420         |               |
| Byrd Elementary        | 470           | 526                            | -56         | -11.91%       |
| Norge Elementary       | 520           | 608                            | -88         | -16.92%       |
| James River Elementary | 466           | 481                            | -15         | -3.22%        |
| Whaley Elementary      | 430           | 472                            | -42         | -9.77%        |
| DJ Montague Elementary | 454           | 599                            | -145        | -31.94%       |
| Stonehouse Elementary  | 676           | 854                            | -178        | -26.33%       |
| Matoaka Elementary     | 714           | 707                            | 7           | 0.98%         |
| Toano Middle           | 677           | 910                            | -233        | -34.42%       |
| James Blair Middle     | 0             | 679                            | -679        |               |
| Hornsby Middle         | 890           |                                | 890         |               |
| Berkeley Middle        | 886           | 901                            | -15         | -1.69%        |
| Lafayette High         | 1,113         | 1124                           | -11         | -0.99%        |
| Jamestown High         | 1,218         | 1250                           | -32         | -2.63%        |
| Warhill High           | 1,150         | 1141                           | 9           | 0.78%         |
| <b>Total</b>           | <b>10,564</b> | <b>10,818</b>                  | <b>-254</b> | <b>-2.40%</b> |

## Williamsburg-James City County Public Schools

**LIVE BIRTH DATA**

Utilization of live birth data is recommended when projecting future kindergarten enrollments. This data provides a helpful overall trend. Large bubbles in birth counts, either up or down, can also be planned for and anticipated by the District.

In addition, the live birth counts are used in determining a birth-to-kindergarten survival ratio. This ratio identifies the percentage of children born in a representative area who attend kindergarten in the District five years later. The survival ratios for birth-to-kindergarten as well as grades 1-12 can be found later in this report.

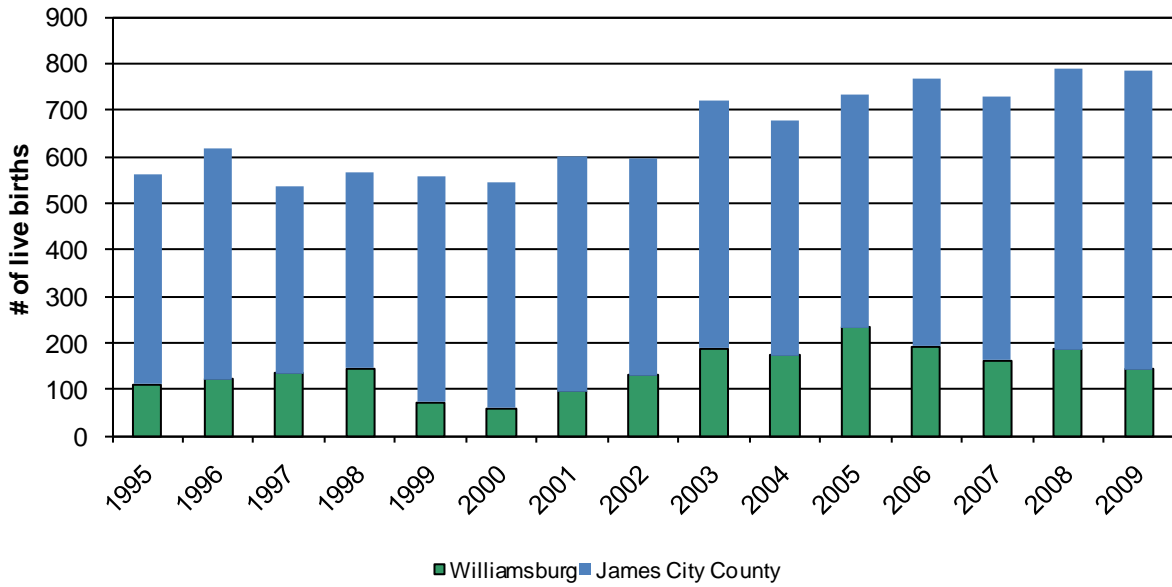
The chart and graph below illustrate live birth counts in Williamsburg and James City County.

| <b>Live Birth Count</b> |                     |                          |
|-------------------------|---------------------|--------------------------|
| <b>1995-2009</b>        |                     |                          |
| <b>Year</b>             | <b>Williamsburg</b> | <b>James City County</b> |
| 1995                    | 111                 | 451                      |
| 1996                    | 122                 | 497                      |
| 1997                    | 135                 | 400                      |
| 1998                    | 144                 | 423                      |
| 1999                    | 72                  | 487                      |
| 2000                    | 59                  | 487                      |
| 2001                    | 96                  | 502                      |
| 2002                    | 129                 | 466                      |
| 2003                    | 188                 | 532                      |
| 2004                    | 172                 | 504                      |
| 2005                    | 233                 | 502                      |
| 2006                    | 192                 | 576                      |
| 2007                    | 161                 | 569                      |
| 2008                    | 186                 | 602                      |
| 2009                    | 142                 | 644                      |

Source: Virginia Department of Health, Office of Vital Records and Health Statistics

Williamsburg-James City County Public Schools

Live Birth Count



## Williamsburg-James City County Public Schools

## DEMOGRAPHICS

The Williamsburg-James City County Public Schools is comprised of Williamsburg City and James City County, Virginia. General demographic data is included in the following tables for the county.

| <b>General Demographic Information</b> |                              |                              |
|--|------------------------------|------------------------------|
|  | <b>Williamsburg<br/>City</b> | <b>James City<br/>County</b> |
| Per Capita Income (1999)               | \$18,483                     | \$29,256                     |
| Median Household Income (2008)         | \$50,209                     | \$76,705                     |
| Persons Below Poverty (2008)           | 18.7%                        | 6.0%                         |
| Total Population (2000)                | 11,998                       | 48,102                       |
| Total Population (2009 Estimate)       | 12,729                       | 63,735                       |

Source: US Census

Following are block group estimates and projections provided by ESRI Business Information Solutions (ESRI BIS). ESRI BIS uses a time series of estimates from the U.S. Census Bureau that includes the latest estimates and intercensal estimates adjusted for error of closure. The Census Bureau's time series is consistent, but testing has revealed improved accuracy by using a variety of sources to track county population trends.

ESRI BIS also employs a time series of building permits and housing starts plus residential deliveries. Finally, local data sources that tested well against Census 2000 are reviewed. Data sources are integrated and then analyzed by Census Block Groups.

Sources of data include:

- ▶ Supplementary Surveys of the Census Bureau
- ▶ Bureau of Labor Statistics' (BLS) Local Area Unemployment Statistics
- ▶ BLS Occupational Employment Statistics
- ▶ InfoUSA
- ▶ U.S. Bureau of the Census' Current Population Survey
- ▶ National Planning Association Data Service

## Williamsburg-James City County Public Schools

Below is a list of definitions as they appear on the U.S. Census Bureau website, to aid in interpretation of the following tables and maps.

**Household:**

*A household includes all the people who occupy a housing unit as their usual place of residence.*

**Average family size:**

*A measure obtained by dividing the number of members of families by the total number of families (or family householders).*

**Family household (Family):**

*A family includes a householder and one or more people living in the same household who are related to the householder by birth, marriage, or adoption. All people who are related to the householder are regarded as members of his or her family. A family household may contain people not related to the householder, but those people are not included as part of the householder's family in census tabulations. Thus, the number of family households is equal to the number of families, but family households may include more members than do families. A household can contain only one family for purposes of census tabulations. Not all households contain families since a household may comprise a group of unrelated people or one person living alone.*

**Householder:**

*The person, or one of the people, in whose name the home is owned, being bought, or rented. If there is no such person present, any household member 15 years old and over can serve as the householder for the purposes of the census. Two types of householders are distinguished: a family householder and a nonfamily householder. A family householder is a householder living with one or more people related to him or her by birth, marriage, or adoption. The householder and all people in the household related to him are family members. A nonfamily householder is a householder living alone or with nonrelatives only.*

## Williamsburg-James City County Public Schools

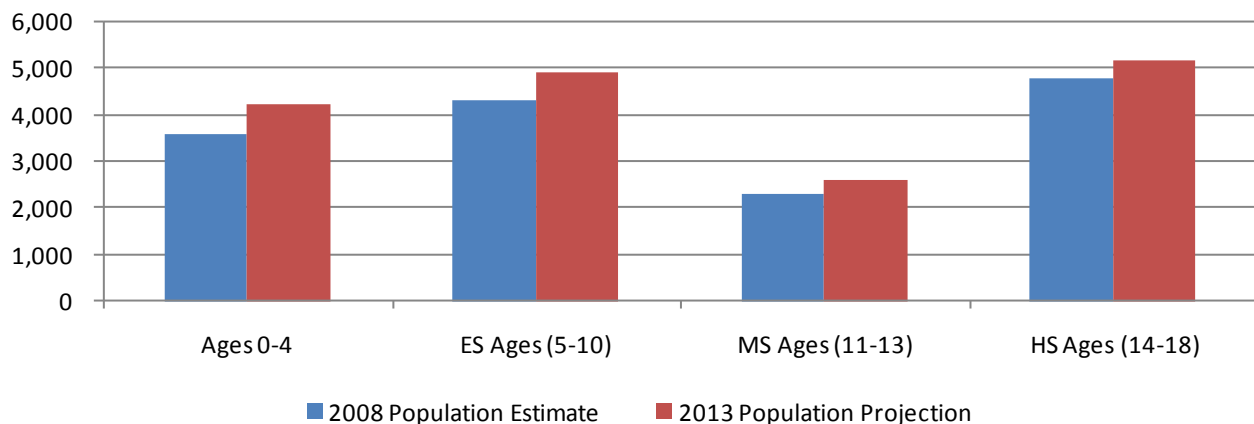
The following tables illustrate the current estimates and 5-year population projections based on block groups that comprise the school district, indicating areas of current and projected growth. The tables have been developed to determine selected age group projections and projections for household income, family size, and family income.

The 0-18 year-old population in the District currently totals 14,897. This population is projected to increase by 1,912 children, or approximately 13 percent.

| <b>Williamsburg-James City County School District</b> | <b>2008 Population Estimate</b> | <b>2013 Population Projection</b> |
|---|---------------------------------|-----------------------------------|
| Ages 0-4  | 3,564                           | 4,200                             |
| ES Ages (5-10)  | 4,288                           | 4,878                             |
| MS Ages (11-13)                                       | 2,298                           | 2,586                             |
| HS Ages (14-18)                                       | 4,748                           | 5,145                             |
| <b>Total Ages 0-18</b>                                | <b>14,897</b>                   | <b>16,809</b>                     |
| Average Age   | 40                              | 41                                |

Source: ESRI BIS

**Williamsburg-James City County School District Population Estimates & Projections by Age Group**



## Williamsburg-James City County Public Schools

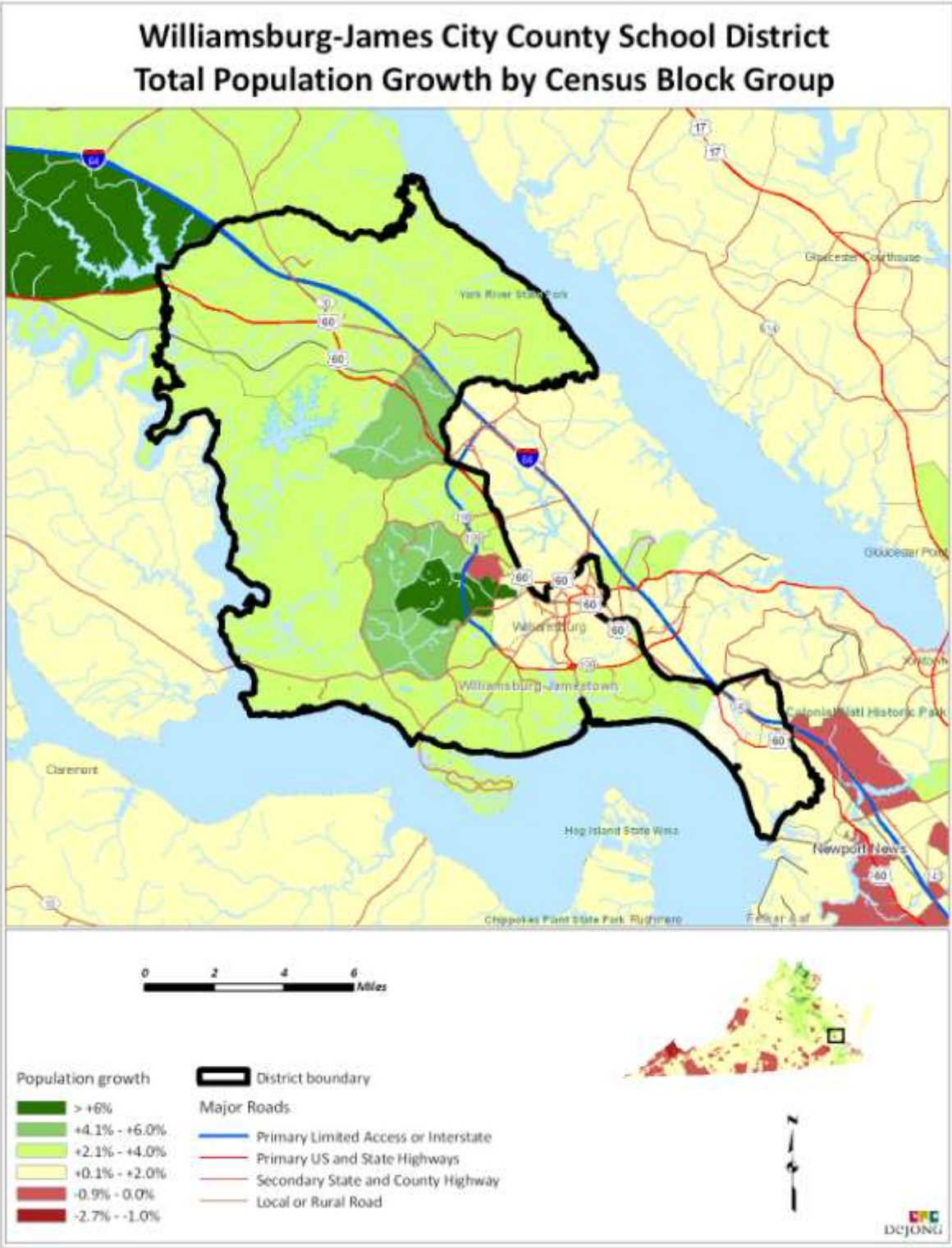
Average household and family incomes in the District are projected to increase by 19% and 17%, respectively over a 5-year period. Average family size is projected to remain relatively the same.

| <b>Williamsburg-James City County School District</b> | <b>2008 Population Estimate</b> | <b>2013 Population Projection</b> |
|---|---------------------------------|-----------------------------------|
| Total Population                                      | 100,856                         | 116,495                           |
| Average Household Income                              | \$85,257                        | \$101,126                         |
| Average Family Size                                   | 2.87                            | 2.88                              |
| Average Family Income                                 | \$97,178                        | \$113,502                         |

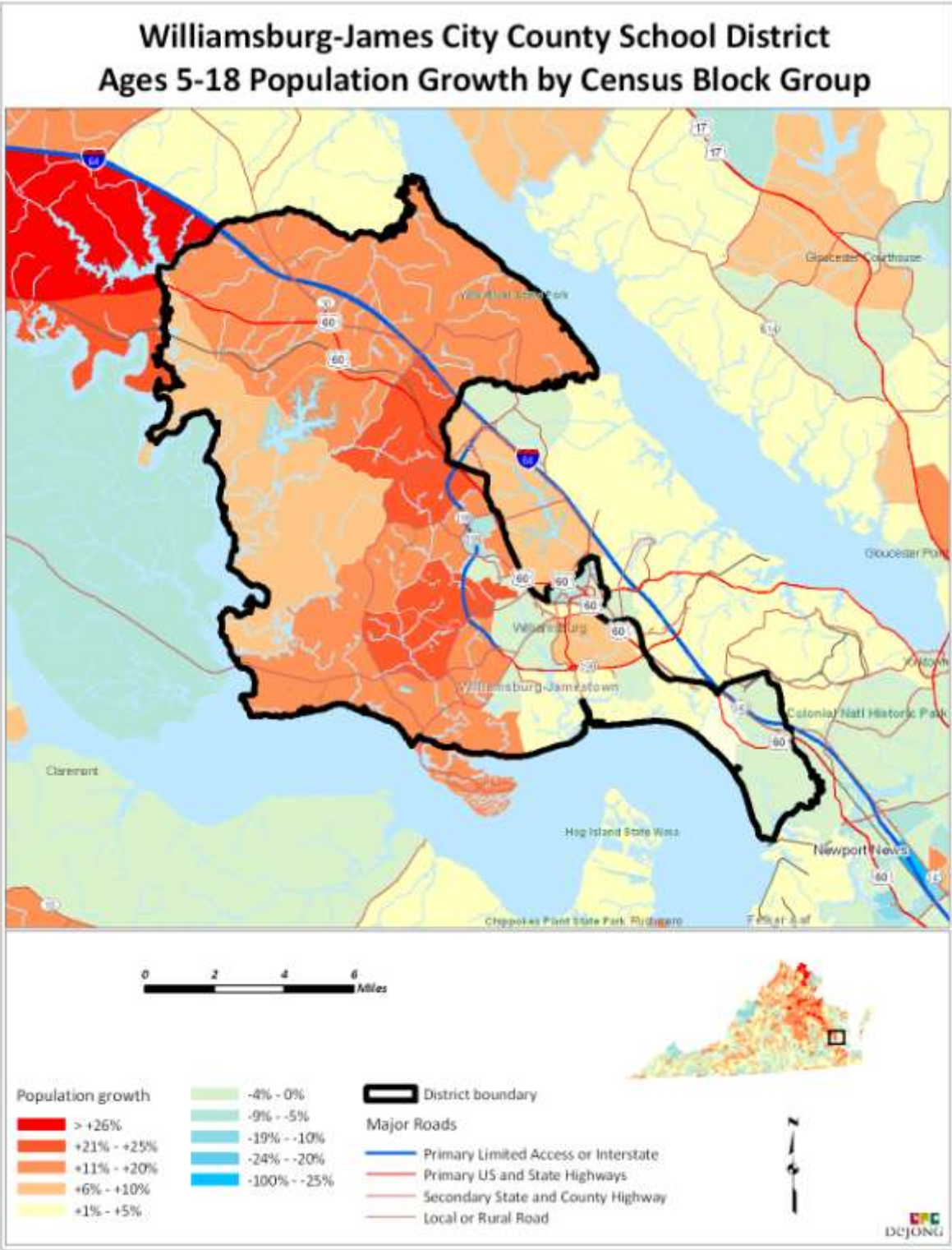
Source: ESRI BIS

The maps on the following pages illustrate the data identified in the tables. The color coding identifies areas within the District that may be increasing or decreasing at different rates than others.

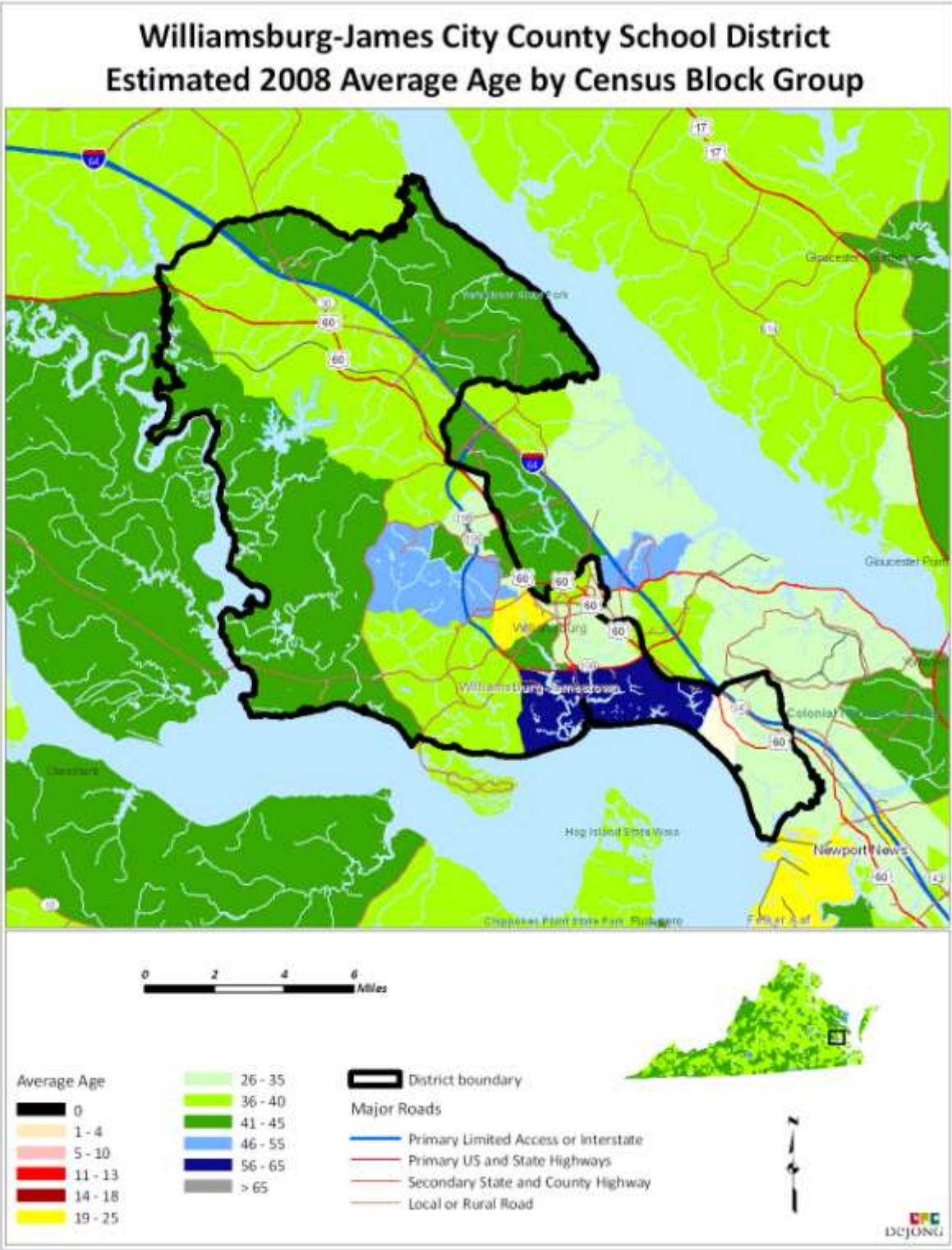
Williamsburg-James City County Public Schools



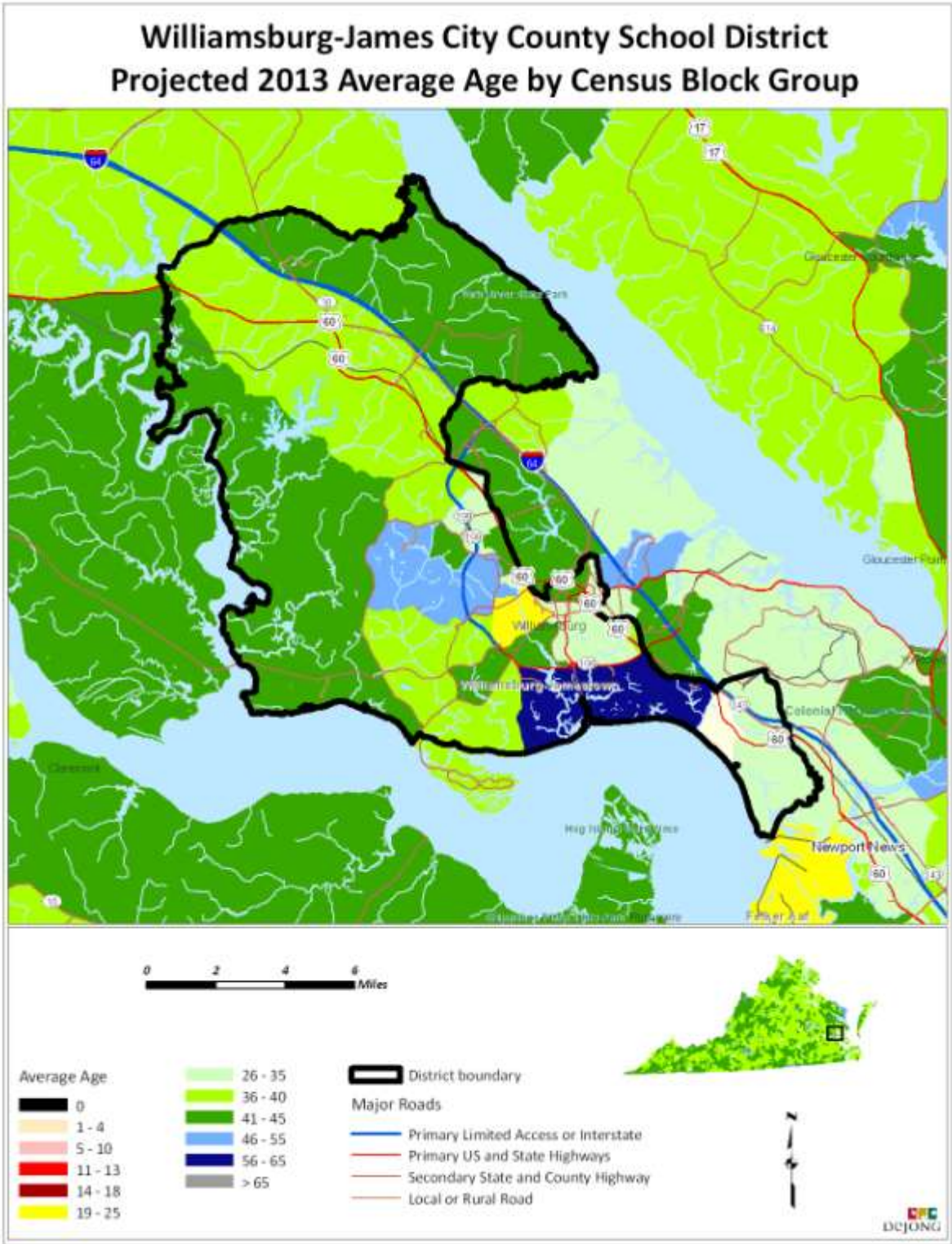
Williamsburg-James City County Public Schools



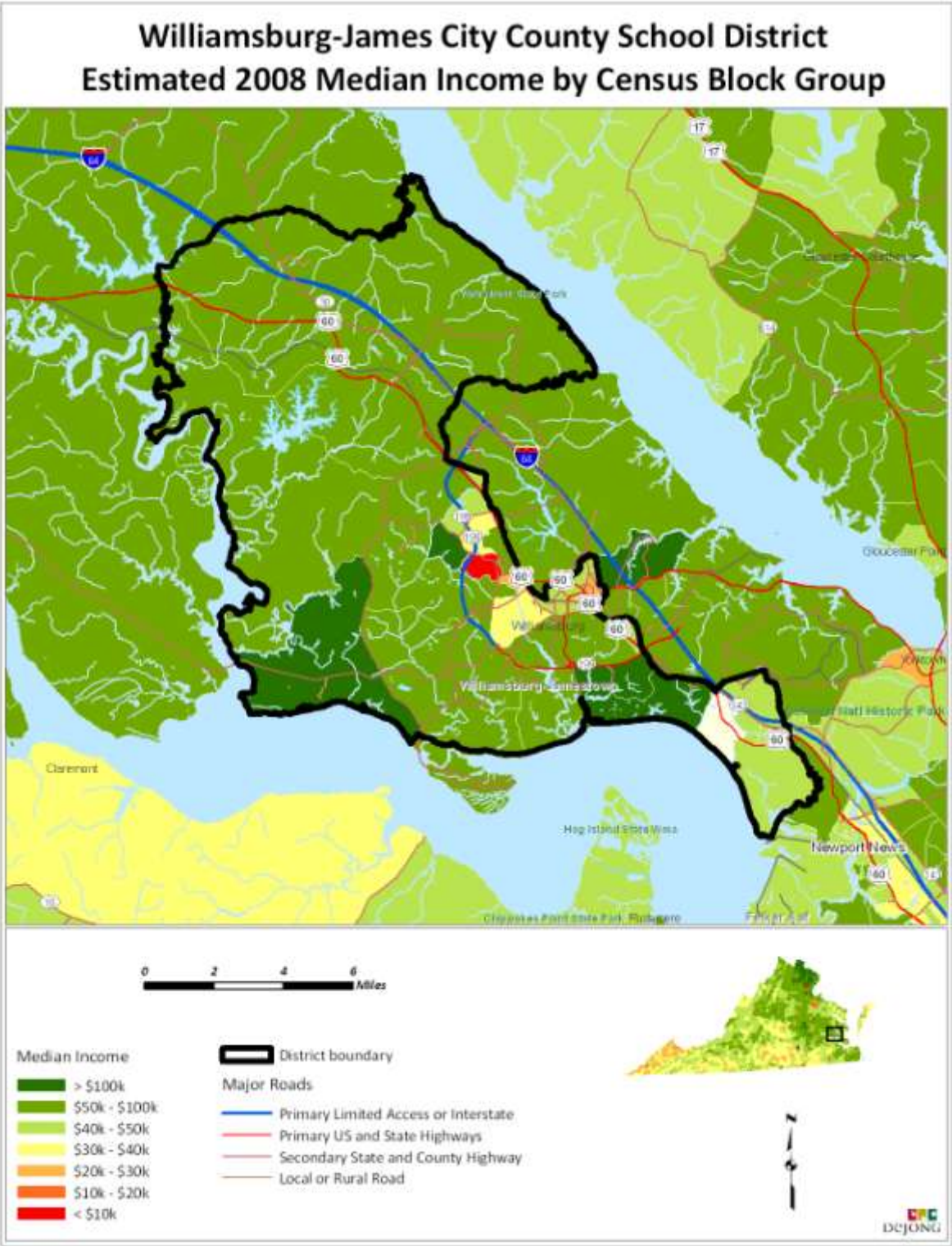
Williamsburg-James City County Public Schools



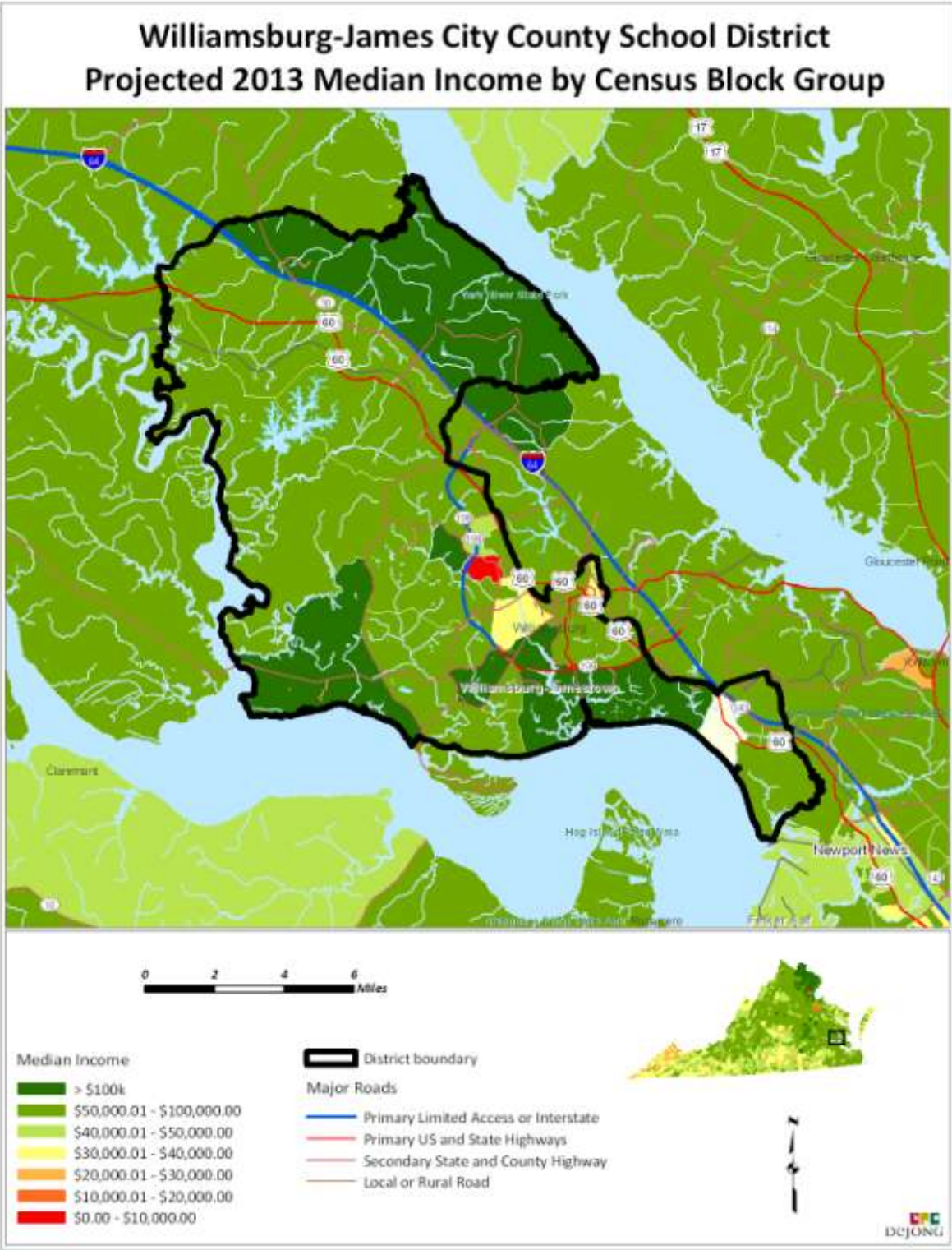
Williamsburg-James City County Public Schools



Williamsburg-James City County Public Schools



Williamsburg-James City County Public Schools



## Williamsburg-James City County Public Schools

### HOUSING INFORMATION

Over the past ten years, the total number of new single family dwellings in Williamsburg and James City County has fluctuated from a low of 388 in 2009 to a high of 1,209 in 2005.

| <b># of Single-Family Building Permits Issued</b> |                     |                          |              |
|---|---------------------|--------------------------|--------------|
| <b>Year</b>                                       | <b>Williamsburg</b> | <b>James City County</b> | <b>Total</b> |
| 1998  | 44                  | 745                      | 789          |
| 1999  | 50                  | 885                      | 935          |
| 2000  | 85                  | 781                      | 866          |
| 2001  | 80                  | 745                      | 825          |
| 2002  | 71                  | 827                      | 898          |
| 2003  | 85                  | 997                      | 1,082        |
| 2004  | 93                  | 1,111                    | 1,204        |
| 2005  | 31                  | 1,178                    | 1,209        |
| 2006  | 18                  | 1,118                    | 1,136        |
| 2007  | 25                  | 669                      | 694          |
| 2008  | 22                  | 413                      | 435          |
| 2009  | 21                  | 367                      | 388          |
| 2010*   | 16                  | 323                      | 339          |

Source: SOCDs Building Permits Database  
\*through August 2010

**Single-Family Building Permits**



## Williamsburg-James City County Public Schools

### SURVIVAL RATIOS

The chart below demonstrates the changes in enrollment as students move through the system. Percentages greater than 100 indicate that there are more students than there were in the previous grade the previous year. In other words, there was growth and new students were added to the system. Percentages less than 100 indicate that there was decline or students left the system.

- ▶ Birth to Kindergarten: This ratio indicates the number of children born in the area who attend kindergarten in the District 5 years later. Percentages less than 100% result from movement out of the district, attendance at a non-public or charter school, or residence in another district within the same area.
- ▶ Grades 8-9: The higher than usual percentage often is a result of school district promotion policies. Often in school districts, students are promoted from 8<sup>th</sup> to 9<sup>th</sup> grade and after one year in 9<sup>th</sup> grade do not have sufficient credits to be classified as 10<sup>th</sup> graders and are counted again as 9<sup>th</sup> graders the following year. There may also be students who are attending private or charter schools or are home schooled through grade 8 and then attend public schools for high school education.

The following table illustrates the survival ratios used in developing the enrollment projections for the Williamsburg-James City County Public Schools.

| from | to                 | birth -> K | K->1     | 1->2    | 2->3   | 3->4    | 4->5   | 5->6   | 6->7   | 7->8   | 8->9     | 9->10   | 10->11  | 11->12  |
|------|--------------------|------------|----------|---------|--------|---------|--------|--------|--------|--------|----------|---------|---------|---------|
| 2001 | 2002               | 107.5%     | 101.1%   | 103.2%  | 107.1% | 101.7%  | 103.8% | 100.1% | 103.4% | 105.4% | 115.5%   | 97.1%   | 87.1%   | 94.9%   |
| 2002 | 2003               | 106.7%     | 104.9%   | 112.9%  | 108.3% | 105.0%  | 107.3% | 103.1% | 110.7% | 102.2% | 119.0%   | 96.6%   | 90.5%   | 99.2%   |
| 2003 | 2004               | 124.7%     | 108.3%   | 106.6%  | 106.7% | 105.6%  | 106.7% | 105.6% | 103.7% | 103.3% | 119.0%   | 99.3%   | 91.2%   | 98.4%   |
| 2004 | 2005               | 128.9%     | 109.9%   | 105.2%  | 111.7% | 104.2%  | 104.9% | 104.0% | 104.8% | 103.5% | 116.3%   | 99.4%   | 86.5%   | 98.8%   |
| 2005 | 2006               | 122.2%     | 105.1%   | 105.0%  | 103.9% | 103.2%  | 106.5% | 100.1% | 101.2% | 103.7% | 117.5%   | 97.0%   | 92.5%   | 96.4%   |
| 2006 | 2007               | 115.8%     | 100.1%   | 99.5%   | 99.8%  | 102.8%  | 101.1% | 97.2%  | 100.9% | 101.8% | 113.2%   | 99.3%   | 90.0%   | 97.0%   |
| 2007 | 2008               | 97.5%      | 103.3%   | 104.1%  | 105.4% | 103.4%  | 106.9% | 100.0% | 104.3% | 101.4% | 114.5%   | 100.3%  | 88.5%   | 95.2%   |
| 2008 | 2009               | 108.4%     | 104.6%   | 105.3%  | 105.4% | 103.5%  | 103.4% | 100.1% | 104.4% | 104.4% | 119.5%   | 98.1%   | 94.6%   | 95.3%   |
| 2009 | 2010               | 93.1%      | 103.1%   | 105.9%  | 103.7% | 101.2%  | 102.4% | 100.5% | 103.2% | 99.6%  | 114.1%   | 96.3%   | 90.9%   | 97.8%   |
|      | average            | 111.65%    | 104.491% | 105.29% | 105.8% | 103.41% | 104.8% | 101.2% | 104.1% | 102.8% | 116.507% | 98.165% | 90.204% | 97.003% |
|      | standard deviation | 11.529%    | 2.937%   | 3.321%  | 3.124% | 1.340%  | 2.112% | 2.419% | 2.665% | 1.649% | 2.211%   | 1.386%  | 2.402%  | 1.557%  |

## Williamsburg-James City County Public Schools

### ENROLLMENT PROJECTIONS

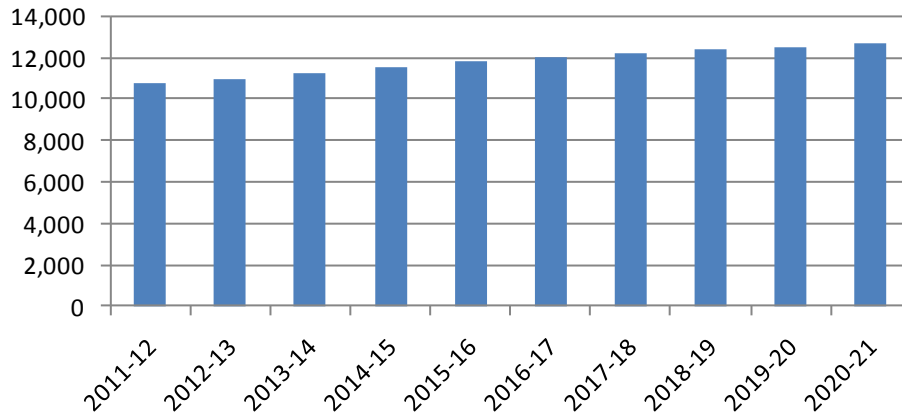
Following is the ten-year projected enrollment based on the slowing housing market and downturn in the economy. According to this projection, enrollment would increase 2,135 students in grades K – 12 from the current 2010-11 enrollment of 10,564 to the 2020-21 projected enrollment of 12,699 students.

| Williamsburg-James City County School District |               |               |               |               |               |               |               |               |               |               |
|--|---------------|---------------|---------------|---------------|---------------|---------------|---------------|---------------|---------------|---------------|
| Projected Enrollment                           |               |               |               |               |               |               |               |               |               |               |
| Grade  | 2011-12       | 2012-13       | 2013-14       | 2014-15       | 2015-16       | 2016-17       | 2017-18       | 2018-19       | 2019-20       | 2020-21       |
| K  | 801           | 762           | 822           | 819           | 803           | 803           | 803           | 803           | 803           | 803           |
| 1  | 718           | 835           | 793           | 857           | 853           | 836           | 836           | 836           | 836           | 836           |
| 2  | 803           | 757           | 880           | 838           | 904           | 901           | 882           | 882           | 882           | 882           |
| 3  | 819           | 841           | 795           | 921           | 879           | 947           | 946           | 926           | 926           | 926           |
| 4  | 804           | 843           | 866           | 822           | 952           | 905           | 977           | 973           | 952           | 952           |
| 5  | 851           | 841           | 881           | 903           | 852           | 991           | 943           | 1,017         | 1,015         | 994           |
| <b>K - 5 Total</b>                             | <b>4,796</b>  | <b>4,879</b>  | <b>5,037</b>  | <b>5,160</b>  | <b>5,243</b>  | <b>5,383</b>  | <b>5,387</b>  | <b>5,437</b>  | <b>5,414</b>  | <b>5,393</b>  |
| 6  | 826           | 850           | 833           | 879           | 903           | 852           | 991           | 943           | 1,017         | 1,015         |
| 7  | 896           | 860           | 859           | 873           | 915           | 939           | 885           | 1,030         | 980           | 1,058         |
| 8  | 829           | 912           | 875           | 901           | 889           | 931           | 956           | 901           | 1,050         | 997           |
| <b>6 - 8 Total</b>                             | <b>2,551</b>  | <b>2,622</b>  | <b>2,567</b>  | <b>2,653</b>  | <b>2,707</b>  | <b>2,722</b>  | <b>2,832</b>  | <b>2,874</b>  | <b>3,047</b>  | <b>3,070</b>  |
| 9  | 912           | 969           | 1,066         | 1,020         | 1,051         | 1,038         | 1,087         | 1,117         | 1,052         | 1,226         |
| 10   | 878           | 897           | 952           | 1,049         | 1,004         | 1,034         | 1,021         | 1,068         | 1,098         | 1,035         |
| 11   | 839           | 815           | 831           | 883           | 972           | 931           | 960           | 947           | 990           | 1,019         |
| 12   | 824           | 810           | 785           | 803           | 852           | 939           | 899           | 926           | 914           | 956           |
| <b>9 - 12 Total</b>                            | <b>3,453</b>  | <b>3,491</b>  | <b>3,634</b>  | <b>3,755</b>  | <b>3,879</b>  | <b>3,942</b>  | <b>3,967</b>  | <b>4,058</b>  | <b>4,054</b>  | <b>4,236</b>  |
| <b>Grand Total</b>                             | <b>10,800</b> | <b>10,992</b> | <b>11,238</b> | <b>11,568</b> | <b>11,829</b> | <b>12,047</b> | <b>12,186</b> | <b>12,369</b> | <b>12,515</b> | <b>12,699</b> |

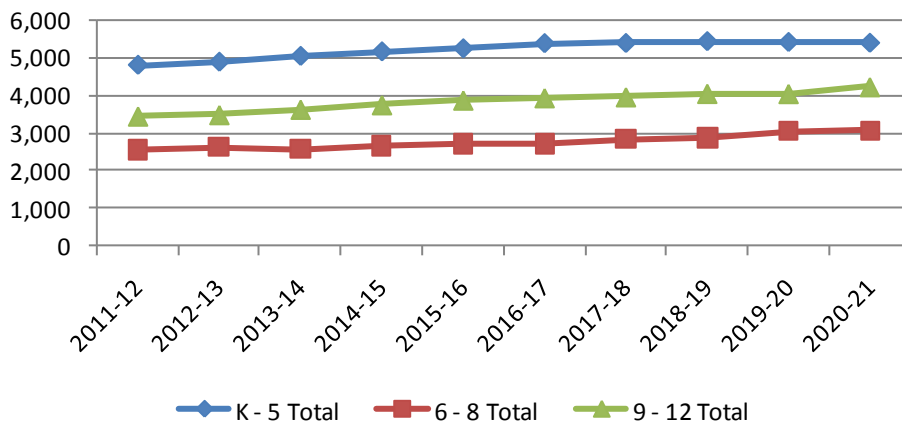
Source: DeJONG-HEALY

## Williamsburg-James City County Public Schools

### Williamsburg-James City County School District Projected Enrollment



### Williamsburg-James City County School District Projected Enrollment by Grade Group



## Williamsburg-James City County Public Schools

### Historical & Projected Enrollment by School

The following charts illustrate the historical and projected enrollment of each school in the District.

| Baker Elementary School |            |            |            |            |            |            |            |            |            |            |
|-------------------------|------------|------------|------------|------------|------------|------------|------------|------------|------------|------------|
| Historical Enrollment   |            |            |            |            |            |            |            |            |            |            |
| Grade                   | 2001-02    | 2002-03    | 2003-04    | 2004-05    | 2005-06    | 2006-07    | 2007-08    | 2008-09    | 2009-10    | 2010-11    |
| K                       | 99         | 104        | 109        | 140        | 111        | 128        | 75         | 78         | 77         | 69         |
| 1                       | 102        | 98         | 114        | 116        | 139        | 112        | 85         | 87         | 77         | 68         |
| 2                       | 93         | 116        | 119        | 123        | 118        | 158        | 84         | 88         | 88         | 66         |
| 3                       | 126        | 102        | 128        | 122        | 130        | 112        | 103        | 101        | 96         | 88         |
| 4                       | 127        | 132        | 106        | 147        | 105        | 129        | 89         | 103        | 108        | 95         |
| 5                       | 126        | 135        | 146        | 124        | 149        | 113        | 104        | 93         | 105        | 94         |
| <b>K - 5 Total</b>      | <b>673</b> | <b>687</b> | <b>722</b> | <b>772</b> | <b>752</b> | <b>752</b> | <b>540</b> | <b>550</b> | <b>551</b> | <b>480</b> |

Source: Williamsburg-James City County School District

| Baker Elementary School |            |            |            |            |            |            |            |            |            |            |
|-------------------------|------------|------------|------------|------------|------------|------------|------------|------------|------------|------------|
| Projected Enrollment    |            |            |            |            |            |            |            |            |            |            |
| Grade                   | 2011-12    | 2012-13    | 2013-14    | 2014-15    | 2015-16    | 2016-17    | 2017-18    | 2018-19    | 2019-20    | 2020-21    |
| K                       | 81         | 77         | 83         | 83         | 81         | 81         | 81         | 81         | 81         | 81         |
| 1                       | 65         | 75         | 71         | 77         | 77         | 75         | 75         | 75         | 75         | 75         |
| 2                       | 68         | 64         | 75         | 71         | 77         | 77         | 75         | 75         | 75         | 75         |
| 3                       | 93         | 95         | 90         | 104        | 99         | 107        | 107        | 105        | 105        | 105        |
| 4                       | 94         | 99         | 101        | 96         | 111        | 106        | 114        | 114        | 111        | 111        |
| 5                       | 97         | 96         | 101        | 103        | 97         | 113        | 108        | 116        | 116        | 114        |
| <b>K - 5 Total</b>      | <b>498</b> | <b>506</b> | <b>521</b> | <b>534</b> | <b>542</b> | <b>559</b> | <b>560</b> | <b>566</b> | <b>563</b> | <b>561</b> |

Source: DeJONG-HEALY

## Williamsburg-James City County Public Schools

| Blayton Elementary School |         |         |         |         |         |         |         |         |         |            |
|---------------------------|---------|---------|---------|---------|---------|---------|---------|---------|---------|------------|
| Historical Enrollment     |         |         |         |         |         |         |         |         |         |            |
| Grade                     | 2001-02 | 2002-03 | 2003-04 | 2004-05 | 2005-06 | 2006-07 | 2007-08 | 2008-09 | 2009-10 | 2010-11    |
| K                         |         |         |         |         |         |         |         |         |         | 57         |
| 1                         |         |         |         |         |         |         |         |         |         | 72         |
| 2                         |         |         |         |         |         |         |         |         |         | 54         |
| 3                         |         |         |         |         |         |         |         |         |         | 74         |
| 4                         |         |         |         |         |         |         |         |         |         | 79         |
| 5                         |         |         |         |         |         |         |         |         |         | 84         |
| <b>K - 5 Total</b>        |         |         |         |         |         |         |         |         |         | <b>420</b> |

Source: Williamsburg-James City County School District

| Blayton Elementary School |            |            |            |            |            |            |            |            |            |            |
|---------------------------|------------|------------|------------|------------|------------|------------|------------|------------|------------|------------|
| Projected Enrollment      |            |            |            |            |            |            |            |            |            |            |
| Grade                     | 2011-12    | 2012-13    | 2013-14    | 2014-15    | 2015-16    | 2016-17    | 2017-18    | 2018-19    | 2019-20    | 2020-21    |
| K                         | 67         | 64         | 69         | 68         | 67         | 67         | 67         | 67         | 67         | 67         |
| 1                         | 68         | 80         | 76         | 82         | 81         | 80         | 80         | 80         | 80         | 80         |
| 2                         | 56         | 53         | 61         | 58         | 63         | 63         | 62         | 62         | 62         | 62         |
| 3                         | 78         | 80         | 76         | 88         | 84         | 90         | 90         | 88         | 88         | 88         |
| 4                         | 78         | 82         | 84         | 80         | 93         | 88         | 95         | 95         | 93         | 93         |
| 5                         | 87         | 86         | 90         | 92         | 87         | 101        | 96         | 104        | 104        | 102        |
| <b>K - 5 Total</b>        | <b>434</b> | <b>445</b> | <b>456</b> | <b>468</b> | <b>475</b> | <b>489</b> | <b>490</b> | <b>496</b> | <b>494</b> | <b>492</b> |

Source: DeJONG-HEALY

## Williamsburg-James City County Public Schools

| Byrd Elementary School |            |            |            |            |            |            |            |            |            |            |
|------------------------|------------|------------|------------|------------|------------|------------|------------|------------|------------|------------|
| Historical Enrollment  |            |            |            |            |            |            |            |            |            |            |
| Grade                  | 2001-02    | 2002-03    | 2003-04    | 2004-05    | 2005-06    | 2006-07    | 2007-08    | 2008-09    | 2009-10    | 2010-11    |
| K                      | 74         | 69         | 67         | 69         | 85         | 104        | 74         | 75         | 73         | 76         |
| 1                      | 88         | 68         | 71         | 71         | 101        | 90         | 84         | 75         | 89         | 72         |
| 2                      | 105        | 82         | 76         | 60         | 85         | 100        | 75         | 85         | 86         | 84         |
| 3                      | 81         | 101        | 83         | 69         | 75         | 83         | 93         | 77         | 92         | 77         |
| 4                      | 96         | 83         | 102        | 82         | 86         | 74         | 71         | 81         | 83         | 81         |
| 5                      | 82         | 93         | 83         | 115        | 88         | 97         | 71         | 78         | 88         | 80         |
| <b>K - 5 Total</b>     | <b>526</b> | <b>496</b> | <b>482</b> | <b>466</b> | <b>520</b> | <b>548</b> | <b>468</b> | <b>471</b> | <b>511</b> | <b>470</b> |

Source: Williamsburg-James City County School District

| Byrd Elementary School |            |            |            |            |            |            |            |            |            |            |
|------------------------|------------|------------|------------|------------|------------|------------|------------|------------|------------|------------|
| Projected Enrollment   |            |            |            |            |            |            |            |            |            |            |
| Grade                  | 2011-12    | 2012-13    | 2013-14    | 2014-15    | 2015-16    | 2016-17    | 2017-18    | 2018-19    | 2019-20    | 2020-21    |
| K                      | 89         | 85         | 91         | 91         | 89         | 89         | 89         | 89         | 89         | 89         |
| 1                      | 68         | 80         | 76         | 82         | 81         | 80         | 80         | 80         | 80         | 80         |
| 2                      | 87         | 82         | 95         | 91         | 98         | 97         | 95         | 95         | 95         | 95         |
| 3                      | 81         | 83         | 79         | 91         | 87         | 94         | 94         | 92         | 92         | 92         |
| 4                      | 80         | 84         | 86         | 82         | 95         | 90         | 97         | 97         | 95         | 95         |
| 5                      | 83         | 82         | 86         | 88         | 83         | 97         | 92         | 99         | 99         | 97         |
| <b>K - 5 Total</b>     | <b>488</b> | <b>496</b> | <b>513</b> | <b>525</b> | <b>533</b> | <b>547</b> | <b>547</b> | <b>552</b> | <b>550</b> | <b>548</b> |

Source: DeJONG-HEALY

## Williamsburg-James City County Public Schools

| Norge Elementary School |            |            |            |            |            |            |            |            |            |            |
|-------------------------|------------|------------|------------|------------|------------|------------|------------|------------|------------|------------|
| Historical Enrollment   |            |            |            |            |            |            |            |            |            |            |
| Grade                   | 2001-02    | 2002-03    | 2003-04    | 2004-05    | 2005-06    | 2006-07    | 2007-08    | 2008-09    | 2009-10    | 2010-11    |
| K                       | 116        | 93         | 90         | 115        | 110        | 97         | 93         | 96         | 80         | 87         |
| 1                       | 98         | 106        | 89         | 89         | 113        | 111        | 92         | 91         | 96         | 83         |
| 2                       | 111        | 101        | 111        | 94         | 93         | 112        | 104        | 88         | 101        | 90         |
| 3                       | 108        | 117        | 117        | 114        | 105        | 99         | 109        | 100        | 96         | 82         |
| 4                       | 106        | 105        | 120        | 112        | 118        | 102        | 102        | 113        | 109        | 81         |
| 5                       | 106        | 103        | 115        | 120        | 118        | 115        | 102        | 113        | 110        | 97         |
| <b>K - 5 Total</b>      | <b>645</b> | <b>625</b> | <b>642</b> | <b>644</b> | <b>657</b> | <b>636</b> | <b>602</b> | <b>601</b> | <b>592</b> | <b>520</b> |

Source: Williamsburg-James City County School District

| Norge Elementary School |            |            |            |            |            |            |            |            |            |            |
|-------------------------|------------|------------|------------|------------|------------|------------|------------|------------|------------|------------|
| Projected Enrollment    |            |            |            |            |            |            |            |            |            |            |
| Grade                   | 2011-12    | 2012-13    | 2013-14    | 2014-15    | 2015-16    | 2016-17    | 2017-18    | 2018-19    | 2019-20    | 2020-21    |
| K                       | 102        | 97         | 104        | 104        | 102        | 102        | 102        | 102        | 102        | 102        |
| 1                       | 79         | 92         | 87         | 94         | 94         | 92         | 92         | 92         | 92         | 92         |
| 2                       | 93         | 88         | 102        | 97         | 105        | 104        | 102        | 102        | 102        | 102        |
| 3                       | 86         | 89         | 84         | 97         | 93         | 100        | 100        | 97         | 97         | 97         |
| 4                       | 80         | 84         | 86         | 82         | 95         | 90         | 97         | 97         | 95         | 95         |
| 5                       | 100        | 99         | 104        | 107        | 101        | 117        | 111        | 120        | 120        | 117        |
| <b>K - 5 Total</b>      | <b>540</b> | <b>549</b> | <b>567</b> | <b>581</b> | <b>590</b> | <b>605</b> | <b>604</b> | <b>610</b> | <b>608</b> | <b>605</b> |

Source: DeJONG-HEALY

## Williamsburg-James City County Public Schools

| James River Elementary School |            |            |            |            |            |            |            |            |            |            |
|-------------------------------|------------|------------|------------|------------|------------|------------|------------|------------|------------|------------|
| Historical Enrollment         |            |            |            |            |            |            |            |            |            |            |
| Grade                         | 2001-02    | 2002-03    | 2003-04    | 2004-05    | 2005-06    | 2006-07    | 2007-08    | 2008-09    | 2009-10    | 2010-11    |
| K                             | 50         | 64         | 58         | 69         | 69         | 68         | 76         | 57         | 85         | 72         |
| 1                             | 80         | 48         | 65         | 74         | 87         | 71         | 67         | 76         | 68         | 87         |
| 2                             | 67         | 76         | 58         | 79         | 75         | 78         | 80         | 74         | 77         | 69         |
| 3                             | 65         | 66         | 74         | 75         | 79         | 80         | 79         | 93         | 79         | 83         |
| 4                             | 57         | 59         | 73         | 71         | 75         | 84         | 77         | 77         | 78         | 77         |
| 5                             | 79         | 59         | 59         | 66         | 84         | 75         | 74         | 82         | 79         | 78         |
| <b>K - 5 Total</b>            | <b>398</b> | <b>372</b> | <b>387</b> | <b>434</b> | <b>469</b> | <b>456</b> | <b>453</b> | <b>459</b> | <b>466</b> | <b>466</b> |

Source: Williamsburg-James City County School District

| James River Elementary School |            |            |            |            |            |            |            |            |            |            |
|-------------------------------|------------|------------|------------|------------|------------|------------|------------|------------|------------|------------|
| Projected Enrollment          |            |            |            |            |            |            |            |            |            |            |
| Grade                         | 2011-12    | 2012-13    | 2013-14    | 2014-15    | 2015-16    | 2016-17    | 2017-18    | 2018-19    | 2019-20    | 2020-21    |
| K                             | 84         | 80         | 87         | 86         | 85         | 85         | 85         | 85         | 85         | 85         |
| 1                             | 83         | 96         | 91         | 98         | 98         | 96         | 96         | 96         | 96         | 96         |
| 2                             | 71         | 67         | 78         | 74         | 80         | 80         | 78         | 78         | 78         | 78         |
| 3                             | 87         | 90         | 85         | 98         | 94         | 101        | 101        | 99         | 99         | 99         |
| 4                             | 76         | 80         | 82         | 78         | 90         | 86         | 93         | 92         | 90         | 90         |
| 5                             | 81         | 80         | 84         | 86         | 81         | 94         | 90         | 97         | 96         | 94         |
| <b>K - 5 Total</b>            | <b>482</b> | <b>493</b> | <b>507</b> | <b>520</b> | <b>528</b> | <b>542</b> | <b>543</b> | <b>547</b> | <b>544</b> | <b>542</b> |

Source: DeJONG-HEALY

## Williamsburg-James City County Public Schools

| Whaley Elementary School |            |            |            |            |            |            |            |            |            |            |
|--------------------------|------------|------------|------------|------------|------------|------------|------------|------------|------------|------------|
| Historical Enrollment    |            |            |            |            |            |            |            |            |            |            |
| Grade                    | 2001-02    | 2002-03    | 2003-04    | 2004-05    | 2005-06    | 2006-07    | 2007-08    | 2008-09    | 2009-10    | 2010-11    |
| K                        | 57         | 78         | 75         | 91         | 94         | 83         | 64         | 85         | 76         | 74         |
| 1                        | 73         | 69         | 79         | 77         | 92         | 105        | 74         | 57         | 76         | 68         |
| 2                        | 80         | 79         | 77         | 88         | 75         | 107        | 84         | 76         | 57         | 87         |
| 3                        | 83         | 89         | 88         | 84         | 103        | 78         | 82         | 74         | 79         | 57         |
| 4                        | 90         | 87         | 98         | 92         | 90         | 104        | 63         | 89         | 82         | 77         |
| 5                        | 82         | 96         | 80         | 102        | 101        | 96         | 62         | 65         | 89         | 67         |
| <b>K - 5 Total</b>       | <b>465</b> | <b>498</b> | <b>497</b> | <b>534</b> | <b>555</b> | <b>573</b> | <b>429</b> | <b>446</b> | <b>459</b> | <b>430</b> |

Source: Williamsburg-James City County School District

| Whaley Elementary School |            |            |            |            |            |            |            |            |            |            |
|--------------------------|------------|------------|------------|------------|------------|------------|------------|------------|------------|------------|
| Projected Enrollment     |            |            |            |            |            |            |            |            |            |            |
| Grade                    | 2011-12    | 2012-13    | 2013-14    | 2014-15    | 2015-16    | 2016-17    | 2017-18    | 2018-19    | 2019-20    | 2020-21    |
| K                        | 87         | 82         | 89         | 89         | 87         | 87         | 87         | 87         | 87         | 87         |
| 1                        | 65         | 75         | 71         | 77         | 77         | 75         | 75         | 75         | 75         | 75         |
| 2                        | 90         | 85         | 99         | 94         | 101        | 101        | 99         | 99         | 99         | 99         |
| 3                        | 60         | 62         | 58         | 68         | 64         | 70         | 69         | 68         | 68         | 68         |
| 4                        | 76         | 80         | 82         | 78         | 90         | 86         | 93         | 92         | 90         | 90         |
| 5                        | 70         | 69         | 72         | 74         | 70         | 81         | 77         | 83         | 83         | 81         |
| <b>K - 5 Total</b>       | <b>448</b> | <b>453</b> | <b>471</b> | <b>480</b> | <b>489</b> | <b>500</b> | <b>500</b> | <b>504</b> | <b>502</b> | <b>500</b> |

Source: DeJONG-HEALY

## Williamsburg-James City County Public Schools

| DJ Montague Elementary School |            |            |            |            |            |            |            |            |            |            |
|-------------------------------|------------|------------|------------|------------|------------|------------|------------|------------|------------|------------|
| Historical Enrollment         |            |            |            |            |            |            |            |            |            |            |
| Grade                         | 2001-02    | 2002-03    | 2003-04    | 2004-05    | 2005-06    | 2006-07    | 2007-08    | 2008-09    | 2009-10    | 2010-11    |
| K                             | 86         | 90         | 121        | 116        | 132        | 134        | 100        | 95         | 100        | 46         |
| 1                             | 86         | 96         | 106        | 132        | 125        | 136        | 101        | 94         | 97         | 76         |
| 2                             | 107        | 92         | 114        | 110        | 146        | 128        | 99         | 101        | 87         | 86         |
| 3                             | 80         | 123        | 103        | 123        | 131        | 155        | 96         | 95         | 98         | 77         |
| 4                             | 109        | 89         | 133        | 115        | 126        | 138        | 125        | 102        | 95         | 86         |
| 5                             | 123        | 122        | 112        | 142        | 119        | 139        | 104        | 122        | 104        | 83         |
| <b>K - 5 Total</b>            | <b>591</b> | <b>612</b> | <b>689</b> | <b>738</b> | <b>779</b> | <b>830</b> | <b>625</b> | <b>609</b> | <b>581</b> | <b>454</b> |

Source: Williamsburg-James City County School District

| DJ Montague Elementary School |            |            |            |            |            |            |            |            |            |            |
|-------------------------------|------------|------------|------------|------------|------------|------------|------------|------------|------------|------------|
| Projected Enrollment          |            |            |            |            |            |            |            |            |            |            |
| Grade                         | 2011-12    | 2012-13    | 2013-14    | 2014-15    | 2015-16    | 2016-17    | 2017-18    | 2018-19    | 2019-20    | 2020-21    |
| K                             | 54         | 51         | 55         | 55         | 54         | 54         | 54         | 54         | 54         | 54         |
| 1                             | 72         | 84         | 80         | 86         | 86         | 84         | 84         | 84         | 84         | 84         |
| 2                             | 89         | 84         | 97         | 93         | 100        | 100        | 98         | 98         | 98         | 98         |
| 3                             | 81         | 83         | 79         | 91         | 87         | 94         | 94         | 92         | 92         | 92         |
| 4                             | 85         | 89         | 92         | 87         | 101        | 96         | 103        | 103        | 101        | 101        |
| 5                             | 86         | 85         | 89         | 91         | 86         | 100        | 95         | 103        | 102        | 100        |
| <b>K - 5 Total</b>            | <b>467</b> | <b>476</b> | <b>492</b> | <b>503</b> | <b>514</b> | <b>528</b> | <b>528</b> | <b>534</b> | <b>531</b> | <b>529</b> |

Source: DeJONG-HEALY

## Williamsburg-James City County Public Schools

| Stonehouse Elementary School |            |            |            |            |            |            |            |            |            |            |
|------------------------------|------------|------------|------------|------------|------------|------------|------------|------------|------------|------------|
| Historical Enrollment        |            |            |            |            |            |            |            |            |            |            |
| Grade                        | 2001-02    | 2002-03    | 2003-04    | 2004-05    | 2005-06    | 2006-07    | 2007-08    | 2008-09    | 2009-10    | 2010-11    |
| K                            | 64         | 77         | 85         | 97         | 103        | 117        | 111        | 113        | 139        | 95         |
| 1                            | 92         | 67         | 79         | 96         | 109        | 115        | 131        | 116        | 128        | 111        |
| 2                            | 86         | 93         | 68         | 89         | 97         | 121        | 122        | 136        | 135        | 128        |
| 3                            | 90         | 97         | 99         | 78         | 95         | 109        | 128        | 134        | 145        | 108        |
| 4                            | 77         | 89         | 98         | 112        | 93         | 110        | 115        | 133        | 142        | 119        |
| 5                            | 84         | 79         | 96         | 110        | 108        | 103        | 131        | 130        | 142        | 115        |
| <b>K - 5 Total</b>           | <b>493</b> | <b>502</b> | <b>525</b> | <b>582</b> | <b>605</b> | <b>675</b> | <b>738</b> | <b>762</b> | <b>831</b> | <b>676</b> |

Source: Williamsburg-James City County School District

| Stonehouse Elementary School |            |            |            |            |            |            |            |            |            |            |
|------------------------------|------------|------------|------------|------------|------------|------------|------------|------------|------------|------------|
| Projected Enrollment         |            |            |            |            |            |            |            |            |            |            |
| Grade                        | 2011-12    | 2012-13    | 2013-14    | 2014-15    | 2015-16    | 2016-17    | 2017-18    | 2018-19    | 2019-20    | 2020-21    |
| K                            | 111        | 106        | 114        | 114        | 111        | 111        | 111        | 111        | 111        | 111        |
| 1                            | 105        | 122        | 116        | 126        | 125        | 123        | 123        | 123        | 123        | 123        |
| 2                            | 132        | 124        | 145        | 138        | 149        | 148        | 145        | 145        | 145        | 145        |
| 3                            | 114        | 117        | 110        | 128        | 122        | 131        | 131        | 128        | 128        | 128        |
| 4                            | 118        | 123        | 127        | 120        | 139        | 132        | 143        | 142        | 139        | 139        |
| 5                            | 119        | 117        | 123        | 126        | 119        | 139        | 132        | 142        | 142        | 139        |
| <b>K - 5 Total</b>           | <b>699</b> | <b>709</b> | <b>735</b> | <b>752</b> | <b>765</b> | <b>784</b> | <b>785</b> | <b>791</b> | <b>788</b> | <b>785</b> |

Source: DeJONG-HEALY

## Williamsburg-James City County Public Schools

| Matoaka Elementary School |         |         |         |         |         |         |            |            |            |            |
|---------------------------|---------|---------|---------|---------|---------|---------|------------|------------|------------|------------|
| Historical Enrollment     |         |         |         |         |         |         |            |            |            |            |
| Grade                     | 2001-02 | 2002-03 | 2003-04 | 2004-05 | 2005-06 | 2006-07 | 2007-08    | 2008-09    | 2009-10    | 2010-11    |
| K                         |         |         |         |         |         |         | 96         | 103        | 103        | 108        |
| 1                         |         |         |         |         |         |         | 98         | 116        | 103        | 119        |
| 2                         |         |         |         |         |         |         | 88         | 114        | 119        | 113        |
| 3                         |         |         |         |         |         |         | 112        | 102        | 118        | 132        |
| 4                         |         |         |         |         |         |         | 94         | 131        | 106        | 118        |
| 5                         |         |         |         |         |         |         | 101        | 104        | 140        | 124        |
| <b>K - 5 Total</b>        |         |         |         |         |         |         | <b>589</b> | <b>670</b> | <b>689</b> | <b>714</b> |

Source: Williamsburg-James City County School District

| Matoaka Elementary School |            |            |            |            |            |            |            |            |            |            |
|---------------------------|------------|------------|------------|------------|------------|------------|------------|------------|------------|------------|
| Projected Enrollment      |            |            |            |            |            |            |            |            |            |            |
| Grade                     | 2011-12    | 2012-13    | 2013-14    | 2014-15    | 2015-16    | 2016-17    | 2017-18    | 2018-19    | 2019-20    | 2020-21    |
| K                         | 126        | 120        | 130        | 129        | 127        | 127        | 127        | 127        | 127        | 127        |
| 1                         | 113        | 131        | 125        | 135        | 134        | 131        | 131        | 131        | 131        | 131        |
| 2                         | 117        | 110        | 128        | 122        | 131        | 131        | 128        | 128        | 128        | 128        |
| 3                         | 139        | 142        | 134        | 156        | 149        | 160        | 160        | 157        | 157        | 157        |
| 4                         | 117        | 122        | 126        | 119        | 138        | 131        | 142        | 141        | 138        | 138        |
| 5                         | 128        | 127        | 132        | 136        | 128        | 149        | 142        | 153        | 153        | 150        |
| <b>K - 5 Total</b>        | <b>740</b> | <b>752</b> | <b>775</b> | <b>797</b> | <b>807</b> | <b>829</b> | <b>830</b> | <b>837</b> | <b>834</b> | <b>831</b> |

Source: DeJONG-HEALY

| Toano Middle School   |            |            |            |            |            |            |            |            |            |            |
|-----------------------|------------|------------|------------|------------|------------|------------|------------|------------|------------|------------|
| Historical Enrollment |            |            |            |            |            |            |            |            |            |            |
| Grade                 | 2001-02    | 2002-03    | 2003-04    | 2004-05    | 2005-06    | 2006-07    | 2007-08    | 2008-09    | 2009-10    | 2010-11    |
| 6                     | 248        | 254        | 251        | 254        | 302        | 279        | 249        | 284        | 292        | 241        |
| 7                     | 252        | 250        | 271        | 262        | 275        | 297        | 287        | 255        | 289        | 221        |
| 8                     | 257        | 254        | 261        | 295        | 254        | 282        | 289        | 300        | 278        | 215        |
| <b>6 - 8 Total</b>    | <b>757</b> | <b>758</b> | <b>783</b> | <b>811</b> | <b>831</b> | <b>858</b> | <b>825</b> | <b>839</b> | <b>859</b> | <b>677</b> |

Source: Williamsburg-James City County School District

| Toano Middle School  |            |            |            |            |            |            |            |            |            |            |
|----------------------|------------|------------|------------|------------|------------|------------|------------|------------|------------|------------|
| Projected Enrollment |            |            |            |            |            |            |            |            |            |            |
| Grade                | 2011-12    | 2012-13    | 2013-14    | 2014-15    | 2015-16    | 2016-17    | 2017-18    | 2018-19    | 2019-20    | 2020-21    |
| 6                    | 231        | 238        | 229        | 246        | 253        | 238        | 278        | 264        | 285        | 284        |
| 7                    | 244        | 234        | 215        | 237        | 249        | 255        | 241        | 280        | 266        | 288        |
| 8                    | 229        | 252        | 242        | 249        | 245        | 257        | 264        | 249        | 290        | 275        |
| <b>6 - 8 Total</b>   | <b>704</b> | <b>724</b> | <b>686</b> | <b>732</b> | <b>747</b> | <b>750</b> | <b>783</b> | <b>793</b> | <b>841</b> | <b>847</b> |

Source: DeJONG-HEALY

## Williamsburg-James City County Public Schools

### James Blair Middle School

#### Historical Enrollment

| Grade              | 2001-02    | 2002-03    | 2003-04    | 2004-05    | 2005-06    | 2006-07    | 2007-08    | 2008-09    | 2009-10    | 2010-11 |
|--------------------|------------|------------|------------|------------|------------|------------|------------|------------|------------|---------|
| 6                  | 201        | 191        | 185        | 203        | 219        | 215        | 210        | 206        | 202        |         |
| 7                  | 171        | 212        | 211        | 181        | 205        | 228        | 218        | 224        | 219        |         |
| 8                  | 161        | 177        | 211        | 199        | 204        | 215        | 249        | 210        | 221        |         |
| <b>6 - 8 Total</b> | <b>533</b> | <b>580</b> | <b>607</b> | <b>583</b> | <b>628</b> | <b>658</b> | <b>677</b> | <b>640</b> | <b>642</b> |         |

Source: Williamsburg-James City County School District

### Hornsby Middle School

#### Historical Enrollment

| Grade              | 2001-02 | 2002-03 | 2003-04 | 2004-05 | 2005-06 | 2006-07 | 2007-08 | 2008-09 | 2009-10 | 2010-11    |
|--------------------|---------|---------|---------|---------|---------|---------|---------|---------|---------|------------|
| 6                  |         |         |         |         |         |         |         |         |         | 306        |
| 7                  |         |         |         |         |         |         |         |         |         | 296        |
| 8                  |         |         |         |         |         |         |         |         |         | 288        |
| <b>6 - 8 Total</b> |         |         |         |         |         |         |         |         |         | <b>890</b> |

Source: Williamsburg-James City County School District

### Hornsby Middle School

#### Projected Enrollment

| Grade              | 2011-12    | 2012-13    | 2013-14    | 2014-15    | 2015-16    | 2016-17    | 2017-18      | 2018-19      | 2019-20      | 2020-21      |
|--------------------|------------|------------|------------|------------|------------|------------|--------------|--------------|--------------|--------------|
| 6                  | 294        | 302        | 298        | 312        | 321        | 303        | 352          | 335          | 361          | 361          |
| 7                  | 326        | 313        | 322        | 318        | 333        | 342        | 322          | 375          | 357          | 385          |
| 8                  | 306        | 337        | 323        | 333        | 329        | 344        | 353          | 333          | 388          | 369          |
| <b>6 - 8 Total</b> | <b>926</b> | <b>952</b> | <b>943</b> | <b>963</b> | <b>983</b> | <b>989</b> | <b>1,027</b> | <b>1,043</b> | <b>1,106</b> | <b>1,115</b> |

Source: DeJONG-HEALY

### Berkeley Middle School

#### Historical Enrollment

| Grade              | 2001-02    | 2002-03    | 2003-04    | 2004-05    | 2005-06    | 2006-07    | 2007-08    | 2008-09    | 2009-10    | 2010-11    |
|--------------------|------------|------------|------------|------------|------------|------------|------------|------------|------------|------------|
| 6                  | 253        | 238        | 272        | 273        | 289        | 274        | 258        | 259        | 294        | 314        |
| 7                  | 220        | 264        | 274        | 291        | 285        | 295        | 270        | 269        | 274        | 296        |
| 8                  | 247        | 247        | 270        | 287        | 302        | 296        | 297        | 276        | 282        | 276        |
| <b>6 - 8 Total</b> | <b>720</b> | <b>749</b> | <b>816</b> | <b>851</b> | <b>876</b> | <b>865</b> | <b>825</b> | <b>804</b> | <b>850</b> | <b>886</b> |

Source: Williamsburg-James City County School District

### Berkeley Middle School

#### Projected Enrollment

| Grade              | 2011-12    | 2012-13    | 2013-14    | 2014-15    | 2015-16    | 2016-17    | 2017-18      | 2018-19      | 2019-20      | 2020-21      |
|--------------------|------------|------------|------------|------------|------------|------------|--------------|--------------|--------------|--------------|
| 6                  | 301        | 310        | 306        | 321        | 329        | 311        | 361          | 344          | 371          | 370          |
| 7                  | 326        | 313        | 322        | 318        | 333        | 342        | 322          | 375          | 357          | 385          |
| 8                  | 294        | 323        | 310        | 319        | 315        | 330        | 339          | 319          | 372          | 353          |
| <b>6 - 8 Total</b> | <b>921</b> | <b>946</b> | <b>938</b> | <b>958</b> | <b>977</b> | <b>983</b> | <b>1,022</b> | <b>1,038</b> | <b>1,100</b> | <b>1,108</b> |

Source: DeJONG-HEALY

## Williamsburg-James City County Public Schools

| Lafayette High School |              |              |              |              |              |              |              |              |              |              |
|-----------------------|--------------|--------------|--------------|--------------|--------------|--------------|--------------|--------------|--------------|--------------|
| Historical Enrollment |              |              |              |              |              |              |              |              |              |              |
| Grade                 | 2001-02      | 2002-03      | 2003-04      | 2004-05      | 2005-06      | 2006-07      | 2007-08      | 2008-09      | 2009-10      | 2010-11      |
| 9                     | 368          | 398          | 403          | 435          | 449          | 439          | 280          | 314          | 299          | 285          |
| 10                    | 409          | 380          | 384          | 422          | 451          | 441          | 299          | 284          | 310          | 298          |
| 11                    | 305          | 350          | 338          | 349          | 373          | 430          | 272          | 251          | 271          | 272          |
| 12                    | 309          | 290          | 353          | 330          | 351          | 353          | 415          | 250          | 232          | 258          |
| <b>9 - 12 Total</b>   | <b>1,391</b> | <b>1,418</b> | <b>1,478</b> | <b>1,536</b> | <b>1,624</b> | <b>1,663</b> | <b>1,266</b> | <b>1,099</b> | <b>1,112</b> | <b>1,113</b> |

Source: Williamsburg-James City County School District

| Lafayette High School |              |              |              |              |              |              |              |              |              |              |
|-----------------------|--------------|--------------|--------------|--------------|--------------|--------------|--------------|--------------|--------------|--------------|
| Projected Enrollment  |              |              |              |              |              |              |              |              |              |              |
| Grade                 | 2011-12      | 2012-13      | 2013-14      | 2014-15      | 2015-16      | 2016-17      | 2017-18      | 2018-19      | 2019-20      | 2020-21      |
| 9                     | 292          | 310          | 341          | 326          | 336          | 332          | 348          | 357          | 337          | 392          |
| 10                    | 289          | 296          | 314          | 346          | 331          | 341          | 337          | 352          | 362          | 341          |
| 11                    | 268          | 260          | 265          | 282          | 310          | 297          | 306          | 302          | 316          | 325          |
| 12                    | 255          | 251          | 243          | 249          | 264          | 291          | 278          | 287          | 283          | 296          |
| <b>9 - 12 Total</b>   | <b>1,104</b> | <b>1,117</b> | <b>1,163</b> | <b>1,203</b> | <b>1,241</b> | <b>1,261</b> | <b>1,269</b> | <b>1,298</b> | <b>1,298</b> | <b>1,354</b> |

Source: DeJONG-HEALY

| Jamestown High School |              |              |              |              |              |              |              |              |              |              |
|-----------------------|--------------|--------------|--------------|--------------|--------------|--------------|--------------|--------------|--------------|--------------|
| Historical Enrollment |              |              |              |              |              |              |              |              |              |              |
| Grade                 | 2001-02      | 2002-03      | 2003-04      | 2004-05      | 2005-06      | 2006-07      | 2007-08      | 2008-09      | 2009-10      | 2010-11      |
| 9                     | 356          | 370          | 404          | 448          | 459          | 454          | 323          | 331          | 328          | 311          |
| 10                    | 313          | 323          | 358          | 379          | 427          | 440          | 324          | 326          | 312          | 320          |
| 11                    | 300          | 279          | 298          | 328          | 320          | 382          | 327          | 294          | 311          | 287          |
| 12                    | 246          | 284          | 271          | 296          | 318          | 315          | 373          | 310          | 284          | 300          |
| <b>9 - 12 Total</b>   | <b>1,215</b> | <b>1,256</b> | <b>1,331</b> | <b>1,451</b> | <b>1,524</b> | <b>1,591</b> | <b>1,347</b> | <b>1,261</b> | <b>1,235</b> | <b>1,218</b> |

Source: Williamsburg-James City County School District

| Jamestown High School |              |              |              |              |              |              |              |              |              |              |
|-----------------------|--------------|--------------|--------------|--------------|--------------|--------------|--------------|--------------|--------------|--------------|
| Projected Enrollment  |              |              |              |              |              |              |              |              |              |              |
| Grade                 | 2011-12      | 2012-13      | 2013-14      | 2014-15      | 2015-16      | 2016-17      | 2017-18      | 2018-19      | 2019-20      | 2020-21      |
| 9                     | 318          | 338          | 372          | 356          | 367          | 362          | 379          | 390          | 367          | 428          |
| 10                    | 311          | 317          | 337          | 371          | 355          | 366          | 361          | 378          | 389          | 366          |
| 11                    | 282          | 274          | 280          | 297          | 327          | 313          | 323          | 319          | 333          | 343          |
| 12                    | 297          | 292          | 283          | 289          | 307          | 338          | 324          | 333          | 329          | 344          |
| <b>9 - 12 Total</b>   | <b>1,208</b> | <b>1,221</b> | <b>1,272</b> | <b>1,313</b> | <b>1,356</b> | <b>1,379</b> | <b>1,387</b> | <b>1,420</b> | <b>1,418</b> | <b>1,481</b> |

Source: DeJONG-HEALY

## Williamsburg-James City County Public Schools

| <b>Warhill High School</b>   |                |                |                |                |                |                |                |                |                |                |
|------------------------------|----------------|----------------|----------------|----------------|----------------|----------------|----------------|----------------|----------------|----------------|
| <b>Historical Enrollment</b> |                |                |                |                |                |                |                |                |                |                |
| <b>Grade</b>                 | <b>2001-02</b> | <b>2002-03</b> | <b>2003-04</b> | <b>2004-05</b> | <b>2005-06</b> | <b>2006-07</b> | <b>2007-08</b> | <b>2008-09</b> | <b>2009-10</b> | <b>2010-11</b> |
| 9                            |                |                |                |                |                |                | 295            | 311            | 312            | 295            |
| 10                           |                |                |                |                |                |                | 264            | 291            | 316            | 286            |
| 11                           |                |                |                |                |                |                | 194            | 240            | 270            | 294            |
| 12                           |                |                |                |                |                |                |                | 195            | 232            | 275            |
| <b>9 - 12 Total</b>          |                |                |                |                |                |                | <b>753</b>     | <b>1,037</b>   | <b>1,130</b>   | <b>1,150</b>   |

Source: Williamsburg-James City County School District

| <b>Warhill High School</b>  |                |                |                |                |                |                |                |                |                |                |
|-----------------------------|----------------|----------------|----------------|----------------|----------------|----------------|----------------|----------------|----------------|----------------|
| <b>Projected Enrollment</b> |                |                |                |                |                |                |                |                |                |                |
| <b>Grade</b>                | <b>2011-12</b> | <b>2012-13</b> | <b>2013-14</b> | <b>2014-15</b> | <b>2015-16</b> | <b>2016-17</b> | <b>2017-18</b> | <b>2018-19</b> | <b>2019-20</b> | <b>2020-21</b> |
| 9                           | 302            | 321            | 353            | 338            | 348            | 344            | 360            | 370            | 348            | 406            |
| 10                          | 278            | 284            | 301            | 332            | 318            | 327            | 323            | 338            | 347            | 328            |
| 11                          | 289            | 281            | 286            | 304            | 335            | 321            | 331            | 326            | 341            | 351            |
| 12                          | 272            | 267            | 259            | 265            | 281            | 310            | 297            | 306            | 302            | 316            |
| <b>9 - 12 Total</b>         | <b>1,141</b>   | <b>1,153</b>   | <b>1,199</b>   | <b>1,239</b>   | <b>1,282</b>   | <b>1,302</b>   | <b>1,311</b>   | <b>1,340</b>   | <b>1,338</b>   | <b>1,401</b>   |

Source: DeJONG-HEALY

## Williamsburg-James City County Public Schools

In addition to the recommended enrollment projection presented in this report, following are low, moderate, and high enrollment projections developed based on the cohort survival method. The following defines, in terms of economy and housing, the differences between the three projections.

### **Low Projection**

- Higher inflation/interest rates
- Decline in new housing
- Decline in live births

### **Moderate Projection**

- Moderate inflation/interest rates
- Moderate level of new housing
- Live births remain steady

### **High Projection**

- Low inflation/interest rates
- High level of new housing
- Increase in live births

The recommended, or “most likely,” projection falls slightly below the moderate projection. This is due in large part to the decline in the housing market.

The projections range from a low of 11,954 students to a high of 13,966 students in the 2020-21 school year.

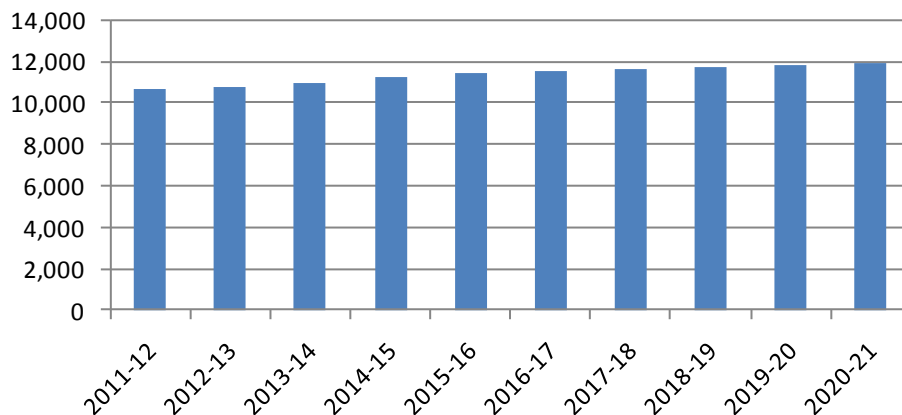
## Williamsburg-James City County Public Schools

### Low Projection

| Williamsburg-James City County School District |               |               |               |               |               |               |               |               |               |               |
|--|---------------|---------------|---------------|---------------|---------------|---------------|---------------|---------------|---------------|---------------|
| Projected Enrollment - Low                     |               |               |               |               |               |               |               |               |               |               |
| Grade  | 2011-12       | 2012-13       | 2013-14       | 2014-15       | 2015-16       | 2016-17       | 2017-18       | 2018-19       | 2019-20       | 2020-21       |
| K  | 779           | 741           | 799           | 794           | 780           | 780           | 780           | 780           | 780           | 780           |
| 1  | 711           | 803           | 765           | 824           | 821           | 804           | 804           | 804           | 804           | 804           |
| 2  | 797           | 747           | 843           | 802           | 866           | 863           | 846           | 846           | 846           | 846           |
| 3  | 807           | 826           | 770           | 872           | 828           | 894           | 892           | 872           | 872           | 872           |
| 4  | 804           | 833           | 851           | 793           | 898           | 854           | 923           | 918           | 901           | 901           |
| 5  | 850           | 840           | 867           | 884           | 831           | 935           | 890           | 958           | 957           | 936           |
| <b>K - 5 Total</b>                             | <b>4,748</b>  | <b>4,790</b>  | <b>4,895</b>  | <b>4,969</b>  | <b>5,024</b>  | <b>5,130</b>  | <b>5,135</b>  | <b>5,178</b>  | <b>5,160</b>  | <b>5,139</b>  |
| 6  | 825           | 849           | 826           | 864           | 883           | 825           | 933           | 887           | 957           | 954           |
| 7  | 893           | 854           | 847           | 866           | 895           | 915           | 854           | 964           | 918           | 991           |
| 8  | 830           | 909           | 861           | 894           | 881           | 911           | 931           | 869           | 982           | 934           |
| <b>6 - 8 Total</b>                             | <b>2,548</b>  | <b>2,612</b>  | <b>2,534</b>  | <b>2,624</b>  | <b>2,659</b>  | <b>2,651</b>  | <b>2,718</b>  | <b>2,720</b>  | <b>2,857</b>  | <b>2,879</b>  |
| 9  | 897           | 954           | 1,044         | 999           | 1,028         | 1,014         | 1,047         | 1,069         | 1,000         | 1,129         |
| 10   | 870           | 874           | 929           | 1,017         | 973           | 1,001         | 988           | 1,020         | 1,043         | 974           |
| 11   | 821           | 788           | 793           | 841           | 922           | 882           | 907           | 894           | 925           | 945           |
| 12   | 821           | 788           | 758           | 761           | 809           | 885           | 847           | 872           | 860           | 888           |
| <b>9 - 12 Total</b>                            | <b>3,409</b>  | <b>3,404</b>  | <b>3,524</b>  | <b>3,618</b>  | <b>3,732</b>  | <b>3,782</b>  | <b>3,789</b>  | <b>3,855</b>  | <b>3,828</b>  | <b>3,936</b>  |
| <b>Grand Total</b>                             | <b>10,705</b> | <b>10,806</b> | <b>10,953</b> | <b>11,211</b> | <b>11,415</b> | <b>11,563</b> | <b>11,642</b> | <b>11,753</b> | <b>11,845</b> | <b>11,954</b> |

Source: DeJONG-HEALY

### Williamsburg-James City County School District Projected Enrollment - Low



## Williamsburg-James City County Public Schools

| <b>Baker Elementary School</b>    |            |            |            |            |            |            |            |            |            |            |
|-----------------------------------|------------|------------|------------|------------|------------|------------|------------|------------|------------|------------|
| <b>Projected Enrollment - Low</b> |            |            |            |            |            |            |            |            |            |            |
| Grade                             | 2011-12    | 2012-13    | 2013-14    | 2014-15    | 2015-16    | 2016-17    | 2017-18    | 2018-19    | 2019-20    | 2020-21    |
| K                                 | 79         | 75         | 81         | 80         | 79         | 79         | 79         | 79         | 79         | 79         |
| 1                                 | 64         | 72         | 69         | 74         | 74         | 72         | 72         | 72         | 72         | 72         |
| 2                                 | 68         | 64         | 72         | 68         | 74         | 73         | 72         | 72         | 72         | 72         |
| 3                                 | 91         | 93         | 87         | 99         | 94         | 101        | 101        | 99         | 99         | 99         |
| 4                                 | 94         | 97         | 99         | 93         | 105        | 100        | 108        | 107        | 105        | 105        |
| 5                                 | 97         | 96         | 99         | 101        | 95         | 107        | 102        | 110        | 109        | 107        |
| <b>K - 5 Total</b>                | <b>493</b> | <b>497</b> | <b>507</b> | <b>515</b> | <b>521</b> | <b>532</b> | <b>534</b> | <b>539</b> | <b>536</b> | <b>534</b> |

Source: DeJONG-HEALY

| <b>Blayton Elementary School</b>  |            |            |            |            |            |            |            |            |            |            |
|-----------------------------------|------------|------------|------------|------------|------------|------------|------------|------------|------------|------------|
| <b>Projected Enrollment - Low</b> |            |            |            |            |            |            |            |            |            |            |
| Grade                             | 2011-12    | 2012-13    | 2013-14    | 2014-15    | 2015-16    | 2016-17    | 2017-18    | 2018-19    | 2019-20    | 2020-21    |
| K                                 | 65         | 62         | 67         | 66         | 65         | 65         | 65         | 65         | 65         | 65         |
| 1                                 | 68         | 77         | 73         | 79         | 78         | 77         | 77         | 77         | 77         | 77         |
| 2                                 | 56         | 52         | 59         | 56         | 60         | 60         | 59         | 59         | 59         | 59         |
| 3                                 | 77         | 79         | 73         | 83         | 79         | 85         | 85         | 83         | 83         | 83         |
| 4                                 | 78         | 81         | 83         | 77         | 87         | 83         | 90         | 89         | 88         | 88         |
| 5                                 | 87         | 86         | 89         | 91         | 85         | 96         | 91         | 98         | 98         | 96         |
| <b>K - 5 Total</b>                | <b>431</b> | <b>437</b> | <b>444</b> | <b>452</b> | <b>454</b> | <b>466</b> | <b>467</b> | <b>471</b> | <b>470</b> | <b>468</b> |

Source: DeJONG-HEALY

| <b>Byrd Elementary School</b>     |            |            |            |            |            |            |            |            |            |            |
|-----------------------------------|------------|------------|------------|------------|------------|------------|------------|------------|------------|------------|
| <b>Projected Enrollment - Low</b> |            |            |            |            |            |            |            |            |            |            |
| Grade                             | 2011-12    | 2012-13    | 2013-14    | 2014-15    | 2015-16    | 2016-17    | 2017-18    | 2018-19    | 2019-20    | 2020-21    |
| K                                 | 86         | 82         | 89         | 88         | 87         | 87         | 87         | 87         | 87         | 87         |
| 1                                 | 68         | 77         | 73         | 79         | 78         | 77         | 77         | 77         | 77         | 77         |
| 2                                 | 86         | 81         | 91         | 87         | 94         | 93         | 91         | 91         | 91         | 91         |
| 3                                 | 80         | 82         | 76         | 86         | 82         | 89         | 88         | 86         | 86         | 86         |
| 4                                 | 80         | 83         | 85         | 79         | 90         | 85         | 92         | 92         | 90         | 90         |
| 5                                 | 83         | 82         | 84         | 86         | 81         | 91         | 87         | 93         | 93         | 91         |
| <b>K - 5 Total</b>                | <b>483</b> | <b>487</b> | <b>498</b> | <b>505</b> | <b>512</b> | <b>522</b> | <b>522</b> | <b>526</b> | <b>524</b> | <b>522</b> |

Source: DeJONG-HEALY

| <b>Norge Elementary School</b>    |            |            |            |            |            |            |            |            |            |            |
|-----------------------------------|------------|------------|------------|------------|------------|------------|------------|------------|------------|------------|
| <b>Projected Enrollment - Low</b> |            |            |            |            |            |            |            |            |            |            |
| Grade                             | 2011-12    | 2012-13    | 2013-14    | 2014-15    | 2015-16    | 2016-17    | 2017-18    | 2018-19    | 2019-20    | 2020-21    |
| K                                 | 99         | 94         | 101        | 101        | 99         | 99         | 99         | 99         | 99         | 99         |
| 1                                 | 78         | 88         | 84         | 90         | 90         | 88         | 88         | 88         | 88         | 88         |
| 2                                 | 92         | 86         | 98         | 93         | 100        | 100        | 98         | 98         | 98         | 98         |
| 3                                 | 85         | 87         | 81         | 92         | 87         | 94         | 94         | 92         | 92         | 92         |
| 4                                 | 80         | 83         | 85         | 79         | 90         | 85         | 92         | 92         | 90         | 90         |
| 5                                 | 100        | 99         | 102        | 104        | 98         | 110        | 105        | 113        | 113        | 110        |
| <b>K - 5 Total</b>                | <b>534</b> | <b>537</b> | <b>551</b> | <b>559</b> | <b>564</b> | <b>576</b> | <b>576</b> | <b>582</b> | <b>580</b> | <b>577</b> |

Source: DeJONG-HEALY

## Williamsburg-James City County Public Schools

### James River Elementary School

#### Projected Enrollment - Low

| Grade              | 2011-12    | 2012-13    | 2013-14    | 2014-15    | 2015-16    | 2016-17    | 2017-18    | 2018-19    | 2019-20    | 2020-21    |
|--------------------|------------|------------|------------|------------|------------|------------|------------|------------|------------|------------|
| K                  | 82         | 78         | 84         | 84         | 82         | 82         | 82         | 82         | 82         | 82         |
| 1                  | 82         | 92         | 88         | 95         | 95         | 93         | 93         | 93         | 93         | 93         |
| 2                  | 71         | 66         | 75         | 71         | 77         | 77         | 75         | 75         | 75         | 75         |
| 3                  | 86         | 88         | 82         | 93         | 88         | 95         | 95         | 93         | 93         | 93         |
| 4                  | 76         | 79         | 81         | 75         | 85         | 81         | 87         | 87         | 85         | 85         |
| 5                  | 81         | 80         | 82         | 84         | 79         | 89         | 84         | 91         | 91         | 89         |
| <b>K - 5 Total</b> | <b>478</b> | <b>483</b> | <b>492</b> | <b>502</b> | <b>506</b> | <b>517</b> | <b>516</b> | <b>521</b> | <b>519</b> | <b>517</b> |

Source: DeJONG-HEALY

### Whaley Elementary School

#### Projected Enrollment - Low

| Grade              | 2011-12    | 2012-13    | 2013-14    | 2014-15    | 2015-16    | 2016-17    | 2017-18    | 2018-19    | 2019-20    | 2020-21    |
|--------------------|------------|------------|------------|------------|------------|------------|------------|------------|------------|------------|
| K                  | 84         | 80         | 86         | 86         | 84         | 84         | 84         | 84         | 84         | 84         |
| 1                  | 64         | 72         | 69         | 74         | 74         | 72         | 72         | 72         | 72         | 72         |
| 2                  | 89         | 84         | 94         | 90         | 97         | 97         | 95         | 95         | 95         | 95         |
| 3                  | 59         | 61         | 57         | 64         | 61         | 66         | 66         | 64         | 64         | 64         |
| 4                  | 76         | 79         | 81         | 75         | 85         | 81         | 87         | 87         | 85         | 85         |
| 5                  | 69         | 69         | 71         | 72         | 68         | 76         | 73         | 78         | 78         | 76         |
| <b>K - 5 Total</b> | <b>441</b> | <b>445</b> | <b>458</b> | <b>461</b> | <b>469</b> | <b>476</b> | <b>477</b> | <b>480</b> | <b>478</b> | <b>476</b> |

Source: DeJONG-HEALY

### DJ Montague Elementary School

#### Projected Enrollment - Low

| Grade              | 2011-12    | 2012-13    | 2013-14    | 2014-15    | 2015-16    | 2016-17    | 2017-18    | 2018-19    | 2019-20    | 2020-21    |
|--------------------|------------|------------|------------|------------|------------|------------|------------|------------|------------|------------|
| K                  | 53         | 50         | 54         | 54         | 53         | 53         | 53         | 53         | 53         | 53         |
| 1                  | 71         | 81         | 77         | 83         | 83         | 81         | 81         | 81         | 81         | 81         |
| 2                  | 88         | 83         | 93         | 89         | 96         | 96         | 94         | 94         | 94         | 94         |
| 3                  | 80         | 82         | 76         | 86         | 82         | 89         | 88         | 86         | 86         | 86         |
| 4                  | 85         | 88         | 90         | 84         | 95         | 90         | 98         | 97         | 95         | 95         |
| 5                  | 86         | 85         | 88         | 89         | 84         | 94         | 90         | 97         | 97         | 95         |
| <b>K - 5 Total</b> | <b>463</b> | <b>469</b> | <b>478</b> | <b>485</b> | <b>493</b> | <b>503</b> | <b>504</b> | <b>508</b> | <b>506</b> | <b>504</b> |

Source: DeJONG-HEALY

### Stonehouse Elementary School

#### Projected Enrollment - Low

| Grade              | 2011-12    | 2012-13    | 2013-14    | 2014-15    | 2015-16    | 2016-17    | 2017-18    | 2018-19    | 2019-20    | 2020-21    |
|--------------------|------------|------------|------------|------------|------------|------------|------------|------------|------------|------------|
| K                  | 108        | 103        | 111        | 110        | 108        | 108        | 108        | 108        | 108        | 108        |
| 1                  | 104        | 118        | 112        | 121        | 120        | 118        | 118        | 118        | 118        | 118        |
| 2                  | 131        | 123        | 139        | 132        | 142        | 142        | 139        | 139        | 139        | 139        |
| 3                  | 112        | 114        | 107        | 121        | 115        | 124        | 124        | 121        | 121        | 121        |
| 4                  | 118        | 122        | 124        | 116        | 131        | 125        | 135        | 134        | 132        | 132        |
| 5                  | 119        | 117        | 121        | 124        | 116        | 131        | 124        | 134        | 134        | 131        |
| <b>K - 5 Total</b> | <b>692</b> | <b>697</b> | <b>714</b> | <b>724</b> | <b>732</b> | <b>748</b> | <b>748</b> | <b>754</b> | <b>752</b> | <b>749</b> |

Source: DeJONG-HEALY

## Williamsburg-James City County Public Schools

### Matoaka Elementary School

#### Projected Enrollment - Low

| Grade              | 2011-12    | 2012-13    | 2013-14    | 2014-15    | 2015-16    | 2016-17    | 2017-18    | 2018-19    | 2019-20    | 2020-21    |
|--------------------|------------|------------|------------|------------|------------|------------|------------|------------|------------|------------|
| K                  | 123        | 117        | 126        | 125        | 123        | 123        | 123        | 123        | 123        | 123        |
| 1                  | 112        | 126        | 120        | 129        | 129        | 126        | 126        | 126        | 126        | 126        |
| 2                  | 116        | 108        | 122        | 116        | 126        | 125        | 123        | 123        | 123        | 123        |
| 3                  | 137        | 140        | 131        | 148        | 140        | 151        | 151        | 148        | 148        | 148        |
| 4                  | 117        | 121        | 123        | 115        | 130        | 124        | 134        | 133        | 131        | 131        |
| 5                  | 128        | 126        | 131        | 133        | 125        | 141        | 134        | 144        | 144        | 141        |
| <b>K - 5 Total</b> | <b>733</b> | <b>738</b> | <b>753</b> | <b>766</b> | <b>773</b> | <b>790</b> | <b>791</b> | <b>797</b> | <b>795</b> | <b>792</b> |

Source: DeJONG-HEALY

### Toano Middle School

#### Projected Enrollment - Low

| Grade              | 2011-12    | 2012-13    | 2013-14    | 2014-15    | 2015-16    | 2016-17    | 2017-18    | 2018-19    | 2019-20    | 2020-21    |
|--------------------|------------|------------|------------|------------|------------|------------|------------|------------|------------|------------|
| 6                  | 231        | 238        | 223        | 242        | 247        | 231        | 261        | 248        | 268        | 267        |
| 7                  | 243        | 232        | 207        | 236        | 243        | 249        | 232        | 262        | 250        | 269        |
| 8                  | 229        | 251        | 232        | 247        | 243        | 251        | 257        | 240        | 271        | 258        |
| <b>6 - 8 Total</b> | <b>703</b> | <b>721</b> | <b>662</b> | <b>725</b> | <b>733</b> | <b>731</b> | <b>750</b> | <b>750</b> | <b>789</b> | <b>794</b> |

Source: DeJONG-HEALY

### Hornsby Middle School

#### Projected Enrollment - Low

| Grade              | 2011-12    | 2012-13    | 2013-14    | 2014-15    | 2015-16    | 2016-17    | 2017-18    | 2018-19    | 2019-20      | 2020-21      |
|--------------------|------------|------------|------------|------------|------------|------------|------------|------------|--------------|--------------|
| 6                  | 293        | 302        | 298        | 307        | 314        | 293        | 332        | 315        | 340          | 339          |
| 7                  | 325        | 311        | 320        | 315        | 326        | 333        | 311        | 351        | 334          | 361          |
| 8                  | 307        | 336        | 321        | 330        | 326        | 337        | 344        | 321        | 363          | 345          |
| <b>6 - 8 Total</b> | <b>925</b> | <b>949</b> | <b>939</b> | <b>952</b> | <b>966</b> | <b>963</b> | <b>987</b> | <b>987</b> | <b>1,037</b> | <b>1,045</b> |

Source: DeJONG-HEALY

### Berkeley Middle School

#### Projected Enrollment - Low

| Grade              | 2011-12    | 2012-13    | 2013-14    | 2014-15    | 2015-16    | 2016-17    | 2017-18    | 2018-19    | 2019-20      | 2020-21      |
|--------------------|------------|------------|------------|------------|------------|------------|------------|------------|--------------|--------------|
| 6                  | 301        | 309        | 305        | 315        | 322        | 301        | 340        | 324        | 349          | 348          |
| 7                  | 325        | 311        | 320        | 315        | 326        | 333        | 311        | 351        | 334          | 361          |
| 8                  | 294        | 322        | 308        | 317        | 312        | 323        | 330        | 308        | 348          | 331          |
| <b>6 - 8 Total</b> | <b>920</b> | <b>942</b> | <b>933</b> | <b>947</b> | <b>960</b> | <b>957</b> | <b>981</b> | <b>983</b> | <b>1,031</b> | <b>1,040</b> |

Source: DeJONG-HEALY

## Williamsburg-James City County Public Schools

| <b>Lafayette High School</b>      |                |                |                |                |                |                |                |                |                |                |
|-----------------------------------|----------------|----------------|----------------|----------------|----------------|----------------|----------------|----------------|----------------|----------------|
| <b>Projected Enrollment - Low</b> |                |                |                |                |                |                |                |                |                |                |
| <b>Grade</b>                      | <b>2011-12</b> | <b>2012-13</b> | <b>2013-14</b> | <b>2014-15</b> | <b>2015-16</b> | <b>2016-17</b> | <b>2017-18</b> | <b>2018-19</b> | <b>2019-20</b> | <b>2020-21</b> |
| 9                                 | 287            | 305            | 334            | 319            | 329            | 324            | 335            | 342            | 320            | 361            |
| 10                                | 287            | 288            | 306            | 335            | 321            | 330            | 326            | 336            | 344            | 321            |
| 11                                | 262            | 251            | 253            | 268            | 294            | 281            | 289            | 285            | 295            | 301            |
| 12                                | 254            | 244            | 235            | 236            | 251            | 274            | 262            | 270            | 266            | 275            |
| <b>9 - 12 Total</b>               | <b>1,090</b>   | <b>1,088</b>   | <b>1,128</b>   | <b>1,158</b>   | <b>1,195</b>   | <b>1,209</b>   | <b>1,212</b>   | <b>1,233</b>   | <b>1,225</b>   | <b>1,258</b>   |

Source: DeJONG-HEALY

| <b>Jamestown High School</b>      |                |                |                |                |                |                |                |                |                |                |
|-----------------------------------|----------------|----------------|----------------|----------------|----------------|----------------|----------------|----------------|----------------|----------------|
| <b>Projected Enrollment - Low</b> |                |                |                |                |                |                |                |                |                |                |
| <b>Grade</b>                      | <b>2011-12</b> | <b>2012-13</b> | <b>2013-14</b> | <b>2014-15</b> | <b>2015-16</b> | <b>2016-17</b> | <b>2017-18</b> | <b>2018-19</b> | <b>2019-20</b> | <b>2020-21</b> |
| 9                                 | 313            | 333            | 364            | 349            | 359            | 354            | 365            | 373            | 349            | 394            |
| 10                                | 308            | 309            | 329            | 360            | 344            | 354            | 350            | 361            | 369            | 345            |
| 11                                | 276            | 265            | 267            | 283            | 310            | 297            | 305            | 301            | 311            | 318            |
| 12                                | 296            | 284            | 273            | 274            | 291            | 319            | 305            | 314            | 310            | 320            |
| <b>9 - 12 Total</b>               | <b>1,193</b>   | <b>1,191</b>   | <b>1,233</b>   | <b>1,266</b>   | <b>1,304</b>   | <b>1,324</b>   | <b>1,325</b>   | <b>1,349</b>   | <b>1,339</b>   | <b>1,377</b>   |

Source: DeJONG-HEALY

| <b>Warhill High School</b>        |                |                |                |                |                |                |                |                |                |                |
|-----------------------------------|----------------|----------------|----------------|----------------|----------------|----------------|----------------|----------------|----------------|----------------|
| <b>Projected Enrollment - Low</b> |                |                |                |                |                |                |                |                |                |                |
| <b>Grade</b>                      | <b>2011-12</b> | <b>2012-13</b> | <b>2013-14</b> | <b>2014-15</b> | <b>2015-16</b> | <b>2016-17</b> | <b>2017-18</b> | <b>2018-19</b> | <b>2019-20</b> | <b>2020-21</b> |
| 9                                 | 297            | 316            | 346            | 331            | 340            | 336            | 347            | 354            | 331            | 374            |
| 10                                | 275            | 277            | 294            | 322            | 308            | 317            | 312            | 323            | 330            | 308            |
| 11                                | 283            | 272            | 273            | 290            | 318            | 304            | 313            | 308            | 319            | 326            |
| 12                                | 271            | 260            | 250            | 251            | 267            | 292            | 280            | 288            | 284            | 293            |
| <b>9 - 12 Total</b>               | <b>1,126</b>   | <b>1,125</b>   | <b>1,163</b>   | <b>1,194</b>   | <b>1,233</b>   | <b>1,249</b>   | <b>1,252</b>   | <b>1,273</b>   | <b>1,264</b>   | <b>1,301</b>   |

Source: DeJONG-HEALY

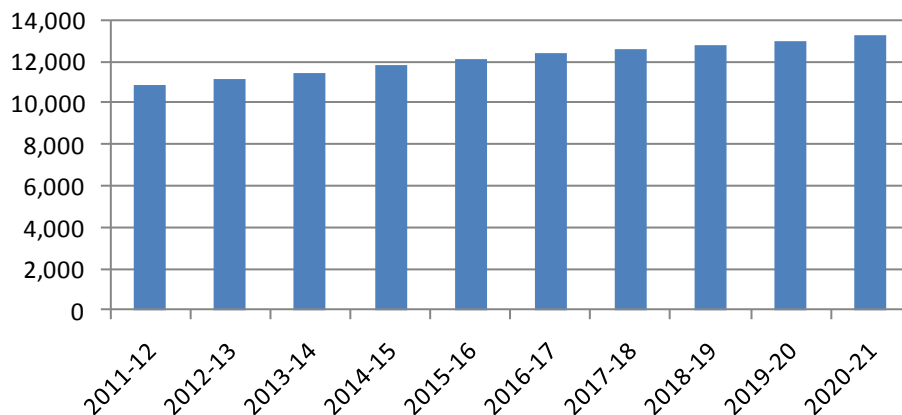
## Williamsburg-James City County Public Schools

### Moderate Projection

| Williamsburg-James City County School District |               |               |               |               |               |               |               |               |               |               |
|--|---------------|---------------|---------------|---------------|---------------|---------------|---------------|---------------|---------------|---------------|
| Projected Enrollment - Moderate                |               |               |               |               |               |               |               |               |               |               |
| Grade  | 2011-12       | 2012-13       | 2013-14       | 2014-15       | 2015-16       | 2016-17       | 2017-18       | 2018-19       | 2019-20       | 2020-21       |
| K  | 828           | 786           | 849           | 848           | 829           | 829           | 829           | 829           | 829           | 829           |
| 1  | 718           | 863           | 819           | 885           | 882           | 864           | 864           | 864           | 864           | 864           |
| 2  | 803           | 757           | 909           | 866           | 934           | 931           | 914           | 914           | 914           | 914           |
| 3  | 819           | 841           | 795           | 954           | 909           | 979           | 976           | 957           | 957           | 957           |
| 4  | 811           | 846           | 870           | 822           | 984           | 937           | 1,012         | 1,011         | 989           | 989           |
| 5  | 859           | 850           | 890           | 914           | 861           | 1,036         | 985           | 1,063         | 1,060         | 1,038         |
| <b>K - 5 Total</b>                             | <b>4,838</b>  | <b>4,943</b>  | <b>5,132</b>  | <b>5,289</b>  | <b>5,399</b>  | <b>5,576</b>  | <b>5,580</b>  | <b>5,638</b>  | <b>5,613</b>  | <b>5,591</b>  |
| 6  | 829           | 861           | 851           | 892           | 917           | 864           | 1,039         | 988           | 1,067         | 1,064         |
| 7  | 896           | 862           | 874           | 887           | 928           | 953           | 898           | 1,080         | 1,027         | 1,110         |
| 8  | 838           | 923           | 893           | 921           | 912           | 954           | 980           | 924           | 1,112         | 1,058         |
| <b>6 - 8 Total</b>                             | <b>2,563</b>  | <b>2,646</b>  | <b>2,618</b>  | <b>2,700</b>  | <b>2,757</b>  | <b>2,771</b>  | <b>2,917</b>  | <b>2,992</b>  | <b>3,206</b>  | <b>3,232</b>  |
| 9  | 912           | 979           | 1,078         | 1,036         | 1,076         | 1,066         | 1,115         | 1,145         | 1,081         | 1,300         |
| 10   | 885           | 904           | 971           | 1,070         | 1,028         | 1,068         | 1,056         | 1,107         | 1,137         | 1,071         |
| 11   | 839           | 821           | 838           | 900           | 992           | 953           | 990           | 980           | 1,025         | 1,053         |
| 12   | 833           | 817           | 800           | 817           | 878           | 966           | 928           | 964           | 955           | 999           |
| <b>9 - 12 Total</b>                            | <b>3,469</b>  | <b>3,521</b>  | <b>3,687</b>  | <b>3,823</b>  | <b>3,974</b>  | <b>4,053</b>  | <b>4,089</b>  | <b>4,196</b>  | <b>4,198</b>  | <b>4,423</b>  |
| <b>Grand Total</b>                             | <b>10,870</b> | <b>11,110</b> | <b>11,437</b> | <b>11,812</b> | <b>12,130</b> | <b>12,400</b> | <b>12,586</b> | <b>12,826</b> | <b>13,017</b> | <b>13,246</b> |

Source: DeJONG-HEALY

### Williamsburg-James City County School District Projected Enrollment - Moderate



## Williamsburg-James City County Public Schools

| Baker Elementary School         |            |            |            |            |            |            |            |            |            |            |
|---------------------------------|------------|------------|------------|------------|------------|------------|------------|------------|------------|------------|
| Projected Enrollment - Moderate |            |            |            |            |            |            |            |            |            |            |
| Grade                           | 2011-12    | 2012-13    | 2013-14    | 2014-15    | 2015-16    | 2016-17    | 2017-18    | 2018-19    | 2019-20    | 2020-21    |
| K                               | 84         | 79         | 86         | 85         | 84         | 84         | 84         | 84         | 84         | 84         |
| 1                               | 65         | 78         | 74         | 80         | 79         | 78         | 78         | 78         | 78         | 78         |
| 2                               | 68         | 64         | 77         | 74         | 79         | 79         | 78         | 78         | 78         | 78         |
| 3                               | 93         | 95         | 90         | 108        | 103        | 111        | 110        | 108        | 108        | 108        |
| 4                               | 95         | 99         | 102        | 96         | 115        | 110        | 118        | 118        | 115        | 115        |
| 5                               | 98         | 97         | 102        | 104        | 98         | 118        | 113        | 122        | 121        | 119        |
| <b>K - 5 Total</b>              | <b>503</b> | <b>512</b> | <b>531</b> | <b>547</b> | <b>558</b> | <b>580</b> | <b>581</b> | <b>588</b> | <b>584</b> | <b>582</b> |

Source: DeJONG-HEALY

| Blayton Elementary School       |            |            |            |            |            |            |            |            |            |            |
|---------------------------------|------------|------------|------------|------------|------------|------------|------------|------------|------------|------------|
| Projected Enrollment - Moderate |            |            |            |            |            |            |            |            |            |            |
| Grade                           | 2011-12    | 2012-13    | 2013-14    | 2014-15    | 2015-16    | 2016-17    | 2017-18    | 2018-19    | 2019-20    | 2020-21    |
| K                               | 69         | 66         | 71         | 71         | 69         | 69         | 69         | 69         | 69         | 69         |
| 1                               | 68         | 82         | 78         | 84         | 84         | 82         | 82         | 82         | 82         | 82         |
| 2                               | 56         | 53         | 63         | 60         | 65         | 65         | 64         | 64         | 64         | 64         |
| 3                               | 78         | 80         | 76         | 91         | 86         | 93         | 93         | 91         | 91         | 91         |
| 4                               | 79         | 82         | 85         | 80         | 96         | 91         | 98         | 98         | 96         | 96         |
| 5                               | 88         | 87         | 91         | 93         | 88         | 106        | 101        | 109        | 108        | 106        |
| <b>K - 5 Total</b>              | <b>438</b> | <b>450</b> | <b>464</b> | <b>479</b> | <b>488</b> | <b>506</b> | <b>507</b> | <b>513</b> | <b>510</b> | <b>508</b> |

Source: DeJONG-HEALY

| Byrd Elementary School          |            |            |            |            |            |            |            |            |            |            |
|---------------------------------|------------|------------|------------|------------|------------|------------|------------|------------|------------|------------|
| Projected Enrollment - Moderate |            |            |            |            |            |            |            |            |            |            |
| Grade                           | 2011-12    | 2012-13    | 2013-14    | 2014-15    | 2015-16    | 2016-17    | 2017-18    | 2018-19    | 2019-20    | 2020-21    |
| K                               | 92         | 87         | 94         | 94         | 92         | 92         | 92         | 92         | 92         | 92         |
| 1                               | 68         | 82         | 78         | 84         | 84         | 82         | 82         | 82         | 82         | 82         |
| 2                               | 87         | 82         | 98         | 94         | 101        | 101        | 99         | 99         | 99         | 99         |
| 3                               | 81         | 83         | 79         | 94         | 90         | 97         | 97         | 95         | 95         | 95         |
| 4                               | 81         | 84         | 87         | 82         | 98         | 93         | 101        | 101        | 99         | 99         |
| 5                               | 84         | 83         | 87         | 89         | 84         | 101        | 96         | 103        | 103        | 101        |
| <b>K - 5 Total</b>              | <b>493</b> | <b>501</b> | <b>523</b> | <b>537</b> | <b>549</b> | <b>566</b> | <b>567</b> | <b>572</b> | <b>570</b> | <b>568</b> |

Source: DeJONG-HEALY

| Norge Elementary School         |            |            |            |            |            |            |            |            |            |            |
|---------------------------------|------------|------------|------------|------------|------------|------------|------------|------------|------------|------------|
| Projected Enrollment - Moderate |            |            |            |            |            |            |            |            |            |            |
| Grade                           | 2011-12    | 2012-13    | 2013-14    | 2014-15    | 2015-16    | 2016-17    | 2017-18    | 2018-19    | 2019-20    | 2020-21    |
| K                               | 105        | 100        | 108        | 108        | 105        | 105        | 105        | 105        | 105        | 105        |
| 1                               | 79         | 95         | 90         | 97         | 97         | 95         | 95         | 95         | 95         | 95         |
| 2                               | 93         | 88         | 105        | 100        | 108        | 108        | 106        | 106        | 106        | 106        |
| 3                               | 86         | 89         | 84         | 101        | 96         | 103        | 103        | 101        | 101        | 101        |
| 4                               | 81         | 84         | 87         | 82         | 98         | 93         | 101        | 101        | 99         | 99         |
| 5                               | 101        | 100        | 105        | 108        | 102        | 122        | 116        | 125        | 125        | 122        |
| <b>K - 5 Total</b>              | <b>545</b> | <b>556</b> | <b>579</b> | <b>596</b> | <b>606</b> | <b>626</b> | <b>626</b> | <b>633</b> | <b>631</b> | <b>628</b> |

Source: DeJONG-HEALY

## Williamsburg-James City County Public Schools

### James River Elementary School

#### Projected Enrollment - Moderate

| Grade              | 2011-12    | 2012-13    | 2013-14    | 2014-15    | 2015-16    | 2016-17    | 2017-18    | 2018-19    | 2019-20    | 2020-21    |
|--------------------|------------|------------|------------|------------|------------|------------|------------|------------|------------|------------|
| K                  | 87         | 83         | 89         | 89         | 87         | 87         | 87         | 87         | 87         | 87         |
| 1                  | 83         | 99         | 94         | 102        | 102        | 99         | 99         | 99         | 99         | 99         |
| 2                  | 71         | 67         | 81         | 77         | 83         | 83         | 81         | 81         | 81         | 81         |
| 3                  | 87         | 90         | 85         | 102        | 97         | 104        | 104        | 102        | 102        | 102        |
| 4                  | 77         | 80         | 82         | 78         | 93         | 89         | 96         | 96         | 94         | 94         |
| 5                  | 82         | 81         | 84         | 87         | 82         | 98         | 94         | 101        | 101        | 99         |
| <b>K - 5 Total</b> | <b>487</b> | <b>500</b> | <b>515</b> | <b>535</b> | <b>544</b> | <b>560</b> | <b>561</b> | <b>566</b> | <b>564</b> | <b>562</b> |

Source: DeJONG-HEALY

### Whaley Elementary School

#### Projected Enrollment - Moderate

| Grade              | 2011-12    | 2012-13    | 2013-14    | 2014-15    | 2015-16    | 2016-17    | 2017-18    | 2018-19    | 2019-20    | 2020-21    |
|--------------------|------------|------------|------------|------------|------------|------------|------------|------------|------------|------------|
| K                  | 90         | 85         | 92         | 92         | 90         | 90         | 90         | 90         | 90         | 90         |
| 1                  | 65         | 78         | 74         | 80         | 79         | 78         | 78         | 78         | 78         | 78         |
| 2                  | 90         | 85         | 102        | 97         | 105        | 104        | 102        | 102        | 102        | 102        |
| 3                  | 60         | 62         | 58         | 70         | 67         | 72         | 72         | 70         | 70         | 70         |
| 4                  | 77         | 80         | 82         | 78         | 93         | 89         | 96         | 96         | 94         | 94         |
| 5                  | 70         | 69         | 73         | 75         | 70         | 85         | 80         | 87         | 87         | 85         |
| <b>K - 5 Total</b> | <b>452</b> | <b>459</b> | <b>481</b> | <b>492</b> | <b>504</b> | <b>518</b> | <b>518</b> | <b>523</b> | <b>521</b> | <b>519</b> |

Source: DeJONG-HEALY

### DJ Montague Elementary School

#### Projected Enrollment - Moderate

| Grade              | 2011-12    | 2012-13    | 2013-14    | 2014-15    | 2015-16    | 2016-17    | 2017-18    | 2018-19    | 2019-20    | 2020-21    |
|--------------------|------------|------------|------------|------------|------------|------------|------------|------------|------------|------------|
| K                  | 56         | 53         | 57         | 57         | 56         | 56         | 56         | 56         | 56         | 56         |
| 1                  | 72         | 87         | 82         | 89         | 89         | 87         | 87         | 87         | 87         | 87         |
| 2                  | 89         | 84         | 101        | 96         | 103        | 103        | 101        | 101        | 101        | 101        |
| 3                  | 81         | 83         | 79         | 94         | 90         | 97         | 97         | 95         | 95         | 95         |
| 4                  | 86         | 90         | 92         | 87         | 104        | 99         | 107        | 107        | 105        | 105        |
| 5                  | 87         | 86         | 90         | 92         | 87         | 105        | 99         | 107        | 107        | 105        |
| <b>K - 5 Total</b> | <b>471</b> | <b>483</b> | <b>501</b> | <b>515</b> | <b>529</b> | <b>547</b> | <b>547</b> | <b>553</b> | <b>551</b> | <b>549</b> |

Source: DeJONG-HEALY

### Stonehouse Elementary School

#### Projected Enrollment - Moderate

| Grade              | 2011-12    | 2012-13    | 2013-14    | 2014-15    | 2015-16    | 2016-17    | 2017-18    | 2018-19    | 2019-20    | 2020-21    |
|--------------------|------------|------------|------------|------------|------------|------------|------------|------------|------------|------------|
| K                  | 115        | 109        | 118        | 118        | 115        | 115        | 115        | 115        | 115        | 115        |
| 1                  | 105        | 126        | 120        | 130        | 129        | 127        | 127        | 127        | 127        | 127        |
| 2                  | 132        | 124        | 150        | 142        | 154        | 153        | 150        | 150        | 150        | 150        |
| 3                  | 114        | 117        | 110        | 132        | 126        | 136        | 135        | 133        | 133        | 133        |
| 4                  | 118        | 124        | 127        | 120        | 144        | 137        | 148        | 148        | 144        | 144        |
| 5                  | 120        | 119        | 124        | 128        | 120        | 145        | 138        | 149        | 148        | 145        |
| <b>K - 5 Total</b> | <b>704</b> | <b>719</b> | <b>749</b> | <b>770</b> | <b>788</b> | <b>813</b> | <b>813</b> | <b>822</b> | <b>817</b> | <b>814</b> |

Source: DeJONG-HEALY

## Williamsburg-James City County Public Schools

| <b>Matoaka Elementary School</b>       |                |                |                |                |                |                |                |                |                |                |
|--|----------------|----------------|----------------|----------------|----------------|----------------|----------------|----------------|----------------|----------------|
| <b>Projected Enrollment - Moderate</b> |                |                |                |                |                |                |                |                |                |                |
| <b>Grade</b>                           | <b>2011-12</b> | <b>2012-13</b> | <b>2013-14</b> | <b>2014-15</b> | <b>2015-16</b> | <b>2016-17</b> | <b>2017-18</b> | <b>2018-19</b> | <b>2019-20</b> | <b>2020-21</b> |
| K                                      | 130            | 124            | 134            | 134            | 131            | 131            | 131            | 131            | 131            | 131            |
| 1                                      | 113            | 136            | 129            | 139            | 139            | 136            | 136            | 136            | 136            | 136            |
| 2                                      | 117            | 110            | 132            | 126            | 136            | 135            | 133            | 133            | 133            | 133            |
| 3                                      | 139            | 142            | 134            | 162            | 154            | 166            | 165            | 162            | 162            | 162            |
| 4                                      | 117            | 123            | 126            | 119            | 143            | 136            | 147            | 146            | 143            | 143            |
| 5                                      | 129            | 128            | 134            | 138            | 130            | 156            | 148            | 160            | 160            | 156            |
| <b>K - 5 Total</b>                     | <b>745</b>     | <b>763</b>     | <b>789</b>     | <b>818</b>     | <b>833</b>     | <b>860</b>     | <b>860</b>     | <b>868</b>     | <b>865</b>     | <b>861</b>     |

Source: DeJONG-HEALY

| <b>Toano Middle School</b>             |                |                |                |                |                |                |                |                |                |                |
|--|----------------|----------------|----------------|----------------|----------------|----------------|----------------|----------------|----------------|----------------|
| <b>Projected Enrollment - Moderate</b> |                |                |                |                |                |                |                |                |                |                |
| <b>Grade</b>                           | <b>2011-12</b> | <b>2012-13</b> | <b>2013-14</b> | <b>2014-15</b> | <b>2015-16</b> | <b>2016-17</b> | <b>2017-18</b> | <b>2018-19</b> | <b>2019-20</b> | <b>2020-21</b> |
| 6                                      | 232            | 241            | 237            | 250            | 257            | 242            | 291            | 277            | 299            | 298            |
| 7                                      | 244            | 234            | 222            | 241            | 252            | 259            | 244            | 294            | 279            | 302            |
| 8                                      | 231            | 255            | 251            | 254            | 252            | 263            | 271            | 255            | 307            | 292            |
| <b>6 - 8 Total</b>                     | <b>707</b>     | <b>730</b>     | <b>710</b>     | <b>745</b>     | <b>761</b>     | <b>764</b>     | <b>806</b>     | <b>826</b>     | <b>885</b>     | <b>892</b>     |

Source: DeJONG-HEALY

| <b>Hornsby Middle School</b>           |                |                |                |                |                |                |                |                |                |                |
|--|----------------|----------------|----------------|----------------|----------------|----------------|----------------|----------------|----------------|----------------|
| <b>Projected Enrollment - Moderate</b> |                |                |                |                |                |                |                |                |                |                |
| <b>Grade</b>                           | <b>2011-12</b> | <b>2012-13</b> | <b>2013-14</b> | <b>2014-15</b> | <b>2015-16</b> | <b>2016-17</b> | <b>2017-18</b> | <b>2018-19</b> | <b>2019-20</b> | <b>2020-21</b> |
| 6                                      | 295            | 306            | 303            | 317            | 326            | 307            | 369            | 351            | 379            | 378            |
| 7                                      | 326            | 314            | 326            | 323            | 338            | 347            | 327            | 393            | 374            | 404            |
| 8                                      | 310            | 341            | 328            | 341            | 337            | 353            | 362            | 342            | 411            | 391            |
| <b>6 - 8 Total</b>                     | <b>931</b>     | <b>961</b>     | <b>957</b>     | <b>981</b>     | <b>1,001</b>   | <b>1,007</b>   | <b>1,058</b>   | <b>1,086</b>   | <b>1,164</b>   | <b>1,173</b>   |

Source: DeJONG-HEALY

| <b>Berkeley Middle School</b>          |                |                |                |                |                |                |                |                |                |                |
|--|----------------|----------------|----------------|----------------|----------------|----------------|----------------|----------------|----------------|----------------|
| <b>Projected Enrollment - Moderate</b> |                |                |                |                |                |                |                |                |                |                |
| <b>Grade</b>                           | <b>2011-12</b> | <b>2012-13</b> | <b>2013-14</b> | <b>2014-15</b> | <b>2015-16</b> | <b>2016-17</b> | <b>2017-18</b> | <b>2018-19</b> | <b>2019-20</b> | <b>2020-21</b> |
| 6                                      | 302            | 314            | 311            | 325            | 334            | 315            | 379            | 360            | 389            | 388            |
| 7                                      | 326            | 314            | 326            | 323            | 338            | 347            | 327            | 393            | 374            | 404            |
| 8                                      | 297            | 327            | 314            | 326            | 323            | 338            | 347            | 327            | 394            | 375            |
| <b>6 - 8 Total</b>                     | <b>925</b>     | <b>955</b>     | <b>951</b>     | <b>974</b>     | <b>995</b>     | <b>1,000</b>   | <b>1,053</b>   | <b>1,080</b>   | <b>1,157</b>   | <b>1,167</b>   |

Source: DeJONG-HEALY

## Williamsburg-James City County Public Schools

| <b>Lafayette High School</b>           |                |                |                |                |                |                |                |                |                |                |
|--|----------------|----------------|----------------|----------------|----------------|----------------|----------------|----------------|----------------|----------------|
| <b>Projected Enrollment - Moderate</b> |                |                |                |                |                |                |                |                |                |                |
| <b>Grade</b>                           | <b>2011-12</b> | <b>2012-13</b> | <b>2013-14</b> | <b>2014-15</b> | <b>2015-16</b> | <b>2016-17</b> | <b>2017-18</b> | <b>2018-19</b> | <b>2019-20</b> | <b>2020-21</b> |
| 9                                      | 292            | 313            | 345            | 331            | 344            | 341            | 357            | 366            | 346            | 416            |
| 10                                     | 292            | 298            | 320            | 353            | 339            | 352            | 348            | 365            | 375            | 353            |
| 11                                     | 268            | 262            | 267            | 287            | 316            | 304            | 316            | 312            | 327            | 336            |
| 12                                     | 258            | 253            | 248            | 253            | 272            | 299            | 288            | 299            | 296            | 309            |
| <b>9 - 12 Total</b>                    | <b>1,110</b>   | <b>1,126</b>   | <b>1,180</b>   | <b>1,224</b>   | <b>1,271</b>   | <b>1,296</b>   | <b>1,309</b>   | <b>1,342</b>   | <b>1,344</b>   | <b>1,414</b>   |

Source: DeJONG-HEALY

| <b>Jamestown High School</b>           |                |                |                |                |                |                |                |                |                |                |
|--|----------------|----------------|----------------|----------------|----------------|----------------|----------------|----------------|----------------|----------------|
| <b>Projected Enrollment - Moderate</b> |                |                |                |                |                |                |                |                |                |                |
| <b>Grade</b>                           | <b>2011-12</b> | <b>2012-13</b> | <b>2013-14</b> | <b>2014-15</b> | <b>2015-16</b> | <b>2016-17</b> | <b>2017-18</b> | <b>2018-19</b> | <b>2019-20</b> | <b>2020-21</b> |
| 9                                      | 318            | 342            | 376            | 362            | 376            | 372            | 389            | 400            | 377            | 454            |
| 10                                     | 313            | 320            | 344            | 379            | 364            | 378            | 374            | 392            | 402            | 379            |
| 11                                     | 282            | 276            | 282            | 303            | 334            | 321            | 333            | 330            | 345            | 354            |
| 12                                     | 300            | 294            | 288            | 294            | 316            | 348            | 334            | 347            | 344            | 360            |
| <b>9 - 12 Total</b>                    | <b>1,213</b>   | <b>1,232</b>   | <b>1,290</b>   | <b>1,338</b>   | <b>1,390</b>   | <b>1,419</b>   | <b>1,430</b>   | <b>1,469</b>   | <b>1,468</b>   | <b>1,547</b>   |

Source: DeJONG-HEALY

| <b>Warhill High School</b>             |                |                |                |                |                |                |                |                |                |                |
|--|----------------|----------------|----------------|----------------|----------------|----------------|----------------|----------------|----------------|----------------|
| <b>Projected Enrollment - Moderate</b> |                |                |                |                |                |                |                |                |                |                |
| <b>Grade</b>                           | <b>2011-12</b> | <b>2012-13</b> | <b>2013-14</b> | <b>2014-15</b> | <b>2015-16</b> | <b>2016-17</b> | <b>2017-18</b> | <b>2018-19</b> | <b>2019-20</b> | <b>2020-21</b> |
| 9                                      | 302            | 324            | 357            | 343            | 356            | 353            | 369            | 379            | 358            | 430            |
| 10                                     | 280            | 286            | 307            | 338            | 325            | 338            | 334            | 350            | 360            | 339            |
| 11                                     | 289            | 283            | 289            | 310            | 342            | 328            | 341            | 338            | 353            | 363            |
| 12                                     | 275            | 270            | 264            | 270            | 290            | 319            | 306            | 318            | 315            | 330            |
| <b>9 - 12 Total</b>                    | <b>1,146</b>   | <b>1,163</b>   | <b>1,217</b>   | <b>1,261</b>   | <b>1,313</b>   | <b>1,338</b>   | <b>1,350</b>   | <b>1,385</b>   | <b>1,386</b>   | <b>1,462</b>   |

Source: DeJONG-HEALY

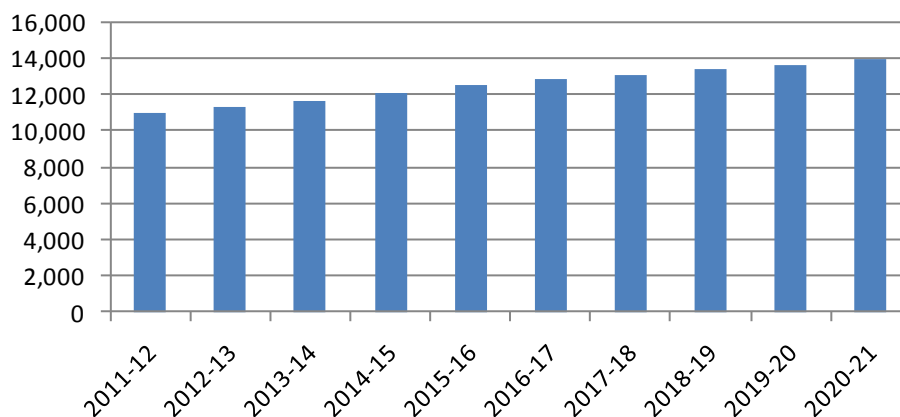
## Williamsburg-James City County Public Schools

### High Projection

| Williamsburg-James City County School District |               |               |               |               |               |               |               |               |               |               |
|--|---------------|---------------|---------------|---------------|---------------|---------------|---------------|---------------|---------------|---------------|
| Projected Enrollment - High                    |               |               |               |               |               |               |               |               |               |               |
| Grade  | 2011-12       | 2012-13       | 2013-14       | 2014-15       | 2015-16       | 2016-17       | 2017-18       | 2018-19       | 2019-20       | 2020-21       |
| K  | 846           | 804           | 867           | 865           | 849           | 849           | 849           | 849           | 849           | 849           |
| 1  | 722           | 887           | 844           | 911           | 909           | 889           | 889           | 889           | 889           | 889           |
| 2  | 803           | 761           | 937           | 892           | 962           | 959           | 941           | 941           | 941           | 941           |
| 3  | 827           | 850           | 807           | 992           | 943           | 1,018         | 1,017         | 993           | 993           | 993           |
| 4  | 813           | 857           | 883           | 837           | 1,031         | 980           | 1,056         | 1,054         | 1,033         | 1,033         |
| 5  | 872           | 865           | 915           | 942           | 892           | 1,097         | 1,043         | 1,127         | 1,123         | 1,100         |
| <b>K - 5 Total</b>                             | <b>4,883</b>  | <b>5,024</b>  | <b>5,253</b>  | <b>5,439</b>  | <b>5,586</b>  | <b>5,792</b>  | <b>5,795</b>  | <b>5,853</b>  | <b>5,828</b>  | <b>5,805</b>  |
| 6  | 829           | 875           | 868           | 918           | 943           | 896           | 1,102         | 1,047         | 1,130         | 1,128         |
| 7  | 901           | 866           | 893           | 907           | 959           | 986           | 936           | 1,151         | 1,094         | 1,181         |
| 8  | 844           | 935           | 908           | 947           | 941           | 995           | 1,022         | 971           | 1,194         | 1,135         |
| <b>6 - 8 Total</b>                             | <b>2,574</b>  | <b>2,676</b>  | <b>2,669</b>  | <b>2,772</b>  | <b>2,843</b>  | <b>2,877</b>  | <b>3,060</b>  | <b>3,169</b>  | <b>3,418</b>  | <b>3,444</b>  |
| 9  | 912           | 988           | 1,092         | 1,050         | 1,106         | 1,100         | 1,163         | 1,195         | 1,135         | 1,395         |
| 10   | 887           | 907           | 980           | 1,085         | 1,043         | 1,099         | 1,093         | 1,155         | 1,188         | 1,127         |
| 11   | 856           | 838           | 856           | 928           | 1,026         | 987           | 1,040         | 1,034         | 1,091         | 1,123         |
| 12   | 839           | 840           | 823           | 841           | 910           | 1,008         | 969           | 1,020         | 1,014         | 1,072         |
| <b>9 - 12 Total</b>                            | <b>3,494</b>  | <b>3,573</b>  | <b>3,751</b>  | <b>3,904</b>  | <b>4,085</b>  | <b>4,194</b>  | <b>4,265</b>  | <b>4,404</b>  | <b>4,428</b>  | <b>4,717</b>  |
| <b>Grand Total</b>                             | <b>10,951</b> | <b>11,273</b> | <b>11,673</b> | <b>12,115</b> | <b>12,514</b> | <b>12,863</b> | <b>13,120</b> | <b>13,426</b> | <b>13,674</b> | <b>13,966</b> |

Source: DeJONG-HEALY

### Williamsburg-James City County School District Projected Enrollment - High



## Williamsburg-James City County Public Schools

### Baker Elementary School

#### Projected Enrollment - High

| Grade              | 2011-12    | 2012-13    | 2013-14    | 2014-15    | 2015-16    | 2016-17    | 2017-18    | 2018-19    | 2019-20    | 2020-21    |
|--------------------|------------|------------|------------|------------|------------|------------|------------|------------|------------|------------|
| K                  | 85         | 81         | 88         | 87         | 86         | 86         | 86         | 86         | 86         | 86         |
| 1                  | 65         | 80         | 76         | 82         | 82         | 80         | 80         | 80         | 80         | 80         |
| 2                  | 68         | 65         | 80         | 76         | 82         | 82         | 80         | 80         | 80         | 80         |
| 3                  | 93         | 96         | 91         | 112        | 107        | 115        | 115        | 112        | 112        | 112        |
| 4                  | 95         | 100        | 103        | 98         | 120        | 114        | 123        | 123        | 121        | 121        |
| 5                  | 100        | 99         | 105        | 108        | 102        | 126        | 119        | 129        | 128        | 126        |
| <b>K - 5 Total</b> | <b>506</b> | <b>521</b> | <b>543</b> | <b>563</b> | <b>579</b> | <b>603</b> | <b>603</b> | <b>610</b> | <b>607</b> | <b>605</b> |

Source: DeJONG-HEALY

### Blayton Elementary School

#### Projected Enrollment - High

| Grade              | 2011-12    | 2012-13    | 2013-14    | 2014-15    | 2015-16    | 2016-17    | 2017-18    | 2018-19    | 2019-20    | 2020-21    |
|--------------------|------------|------------|------------|------------|------------|------------|------------|------------|------------|------------|
| K                  | 71         | 67         | 72         | 72         | 71         | 71         | 71         | 71         | 71         | 71         |
| 1                  | 69         | 85         | 80         | 87         | 87         | 85         | 85         | 85         | 85         | 85         |
| 2                  | 56         | 53         | 65         | 62         | 67         | 67         | 65         | 65         | 65         | 65         |
| 3                  | 79         | 81         | 77         | 94         | 90         | 97         | 97         | 95         | 95         | 95         |
| 4                  | 79         | 83         | 86         | 81         | 100        | 95         | 103        | 102        | 100        | 100        |
| 5                  | 89         | 89         | 93         | 96         | 91         | 112        | 107        | 115        | 115        | 112        |
| <b>K - 5 Total</b> | <b>443</b> | <b>458</b> | <b>473</b> | <b>492</b> | <b>506</b> | <b>527</b> | <b>528</b> | <b>533</b> | <b>531</b> | <b>528</b> |

Source: DeJONG-HEALY

### Byrd Elementary School

#### Projected Enrollment - High

| Grade              | 2011-12    | 2012-13    | 2013-14    | 2014-15    | 2015-16    | 2016-17    | 2017-18    | 2018-19    | 2019-20    | 2020-21    |
|--------------------|------------|------------|------------|------------|------------|------------|------------|------------|------------|------------|
| K                  | 94         | 89         | 96         | 96         | 94         | 94         | 94         | 94         | 94         | 94         |
| 1                  | 69         | 85         | 80         | 87         | 87         | 85         | 85         | 85         | 85         | 85         |
| 2                  | 87         | 82         | 101        | 96         | 104        | 104        | 102        | 102        | 102        | 102        |
| 3                  | 82         | 84         | 80         | 98         | 93         | 101        | 101        | 98         | 98         | 98         |
| 4                  | 81         | 86         | 88         | 84         | 103        | 98         | 105        | 105        | 103        | 103        |
| 5                  | 85         | 84         | 89         | 92         | 87         | 107        | 102        | 110        | 109        | 107        |
| <b>K - 5 Total</b> | <b>498</b> | <b>510</b> | <b>534</b> | <b>553</b> | <b>568</b> | <b>589</b> | <b>589</b> | <b>594</b> | <b>591</b> | <b>589</b> |

Source: DeJONG-HEALY

### Norge Elementary School

#### Projected Enrollment - High

| Grade              | 2011-12    | 2012-13    | 2013-14    | 2014-15    | 2015-16    | 2016-17    | 2017-18    | 2018-19    | 2019-20    | 2020-21    |
|--------------------|------------|------------|------------|------------|------------|------------|------------|------------|------------|------------|
| K                  | 108        | 102        | 110        | 110        | 108        | 108        | 108        | 108        | 108        | 108        |
| 1                  | 79         | 97         | 93         | 100        | 100        | 98         | 98         | 98         | 98         | 98         |
| 2                  | 93         | 88         | 109        | 103        | 111        | 111        | 109        | 109        | 109        | 109        |
| 3                  | 87         | 90         | 85         | 105        | 99         | 107        | 107        | 105        | 105        | 105        |
| 4                  | 81         | 86         | 88         | 84         | 103        | 98         | 105        | 105        | 103        | 103        |
| 5                  | 103        | 102        | 108        | 111        | 105        | 129        | 123        | 133        | 133        | 130        |
| <b>K - 5 Total</b> | <b>551</b> | <b>565</b> | <b>593</b> | <b>613</b> | <b>626</b> | <b>651</b> | <b>650</b> | <b>658</b> | <b>656</b> | <b>653</b> |

Source: DeJONG-HEALY

## Williamsburg-James City County Public Schools

### James River Elementary School

#### Projected Enrollment - High

| Grade              | 2011-12    | 2012-13    | 2013-14    | 2014-15    | 2015-16    | 2016-17    | 2017-18    | 2018-19    | 2019-20    | 2020-21    |
|--------------------|------------|------------|------------|------------|------------|------------|------------|------------|------------|------------|
| K                  | 89         | 85         | 91         | 91         | 89         | 89         | 89         | 89         | 89         | 89         |
| 1                  | 83         | 102        | 97         | 105        | 104        | 102        | 102        | 102        | 102        | 102        |
| 2                  | 71         | 68         | 83         | 79         | 86         | 85         | 84         | 84         | 84         | 84         |
| 3                  | 88         | 91         | 86         | 106        | 101        | 109        | 108        | 106        | 106        | 106        |
| 4                  | 77         | 81         | 84         | 79         | 98         | 93         | 100        | 100        | 98         | 98         |
| 5                  | 83         | 82         | 87         | 89         | 85         | 104        | 99         | 107        | 107        | 104        |
| <b>K - 5 Total</b> | <b>491</b> | <b>509</b> | <b>528</b> | <b>549</b> | <b>563</b> | <b>582</b> | <b>582</b> | <b>588</b> | <b>586</b> | <b>583</b> |

Source: DeJONG-HEALY

### Whaley Elementary School

#### Projected Enrollment - High

| Grade              | 2011-12    | 2012-13    | 2013-14    | 2014-15    | 2015-16    | 2016-17    | 2017-18    | 2018-19    | 2019-20    | 2020-21    |
|--------------------|------------|------------|------------|------------|------------|------------|------------|------------|------------|------------|
| K                  | 92         | 87         | 94         | 94         | 92         | 92         | 92         | 92         | 92         | 92         |
| 1                  | 65         | 80         | 76         | 82         | 82         | 80         | 80         | 80         | 80         | 80         |
| 2                  | 90         | 85         | 105        | 100        | 108        | 107        | 105        | 105        | 105        | 105        |
| 3                  | 61         | 62         | 59         | 73         | 69         | 75         | 75         | 73         | 73         | 73         |
| 4                  | 77         | 81         | 84         | 79         | 98         | 93         | 100        | 100        | 98         | 98         |
| 5                  | 71         | 71         | 75         | 77         | 73         | 90         | 85         | 92         | 92         | 90         |
| <b>K - 5 Total</b> | <b>456</b> | <b>466</b> | <b>493</b> | <b>505</b> | <b>522</b> | <b>537</b> | <b>537</b> | <b>542</b> | <b>540</b> | <b>538</b> |

Source: DeJONG-HEALY

### DJ Montague Elementary School

#### Projected Enrollment - High

| Grade              | 2011-12    | 2012-13    | 2013-14    | 2014-15    | 2015-16    | 2016-17    | 2017-18    | 2018-19    | 2019-20    | 2020-21    |
|--------------------|------------|------------|------------|------------|------------|------------|------------|------------|------------|------------|
| K                  | 57         | 54         | 59         | 58         | 57         | 57         | 57         | 57         | 57         | 57         |
| 1                  | 73         | 89         | 85         | 92         | 91         | 89         | 89         | 89         | 89         | 89         |
| 2                  | 89         | 84         | 104        | 99         | 106        | 106        | 104        | 104        | 104        | 104        |
| 3                  | 82         | 84         | 80         | 98         | 93         | 101        | 101        | 98         | 98         | 98         |
| 4                  | 86         | 91         | 93         | 89         | 109        | 104        | 112        | 112        | 109        | 109        |
| 5                  | 88         | 87         | 92         | 95         | 90         | 111        | 105        | 114        | 113        | 111        |
| <b>K - 5 Total</b> | <b>475</b> | <b>489</b> | <b>513</b> | <b>531</b> | <b>546</b> | <b>568</b> | <b>568</b> | <b>574</b> | <b>570</b> | <b>568</b> |

Source: DeJONG-HEALY

### Stonehouse Elementary School

#### Projected Enrollment - High

| Grade              | 2011-12    | 2012-13    | 2013-14    | 2014-15    | 2015-16    | 2016-17    | 2017-18    | 2018-19    | 2019-20    | 2020-21    |
|--------------------|------------|------------|------------|------------|------------|------------|------------|------------|------------|------------|
| K                  | 117        | 112        | 120        | 120        | 118        | 118        | 118        | 118        | 118        | 118        |
| 1                  | 106        | 130        | 124        | 133        | 133        | 130        | 130        | 130        | 130        | 130        |
| 2                  | 132        | 125        | 154        | 147        | 158        | 158        | 155        | 155        | 155        | 155        |
| 3                  | 115        | 118        | 112        | 138        | 131        | 141        | 141        | 138        | 138        | 138        |
| 4                  | 119        | 125        | 129        | 122        | 151        | 143        | 155        | 154        | 151        | 151        |
| 5                  | 122        | 121        | 128        | 132        | 125        | 153        | 146        | 157        | 157        | 154        |
| <b>K - 5 Total</b> | <b>711</b> | <b>731</b> | <b>767</b> | <b>792</b> | <b>816</b> | <b>843</b> | <b>845</b> | <b>852</b> | <b>849</b> | <b>846</b> |

Source: DeJONG-HEALY

## Williamsburg-James City County Public Schools

### Matoaka Elementary School

#### Projected Enrollment - High

| Grade              | 2011-12    | 2012-13    | 2013-14    | 2014-15    | 2015-16    | 2016-17    | 2017-18    | 2018-19    | 2019-20    | 2020-21    |
|--------------------|------------|------------|------------|------------|------------|------------|------------|------------|------------|------------|
| K                  | 133        | 127        | 137        | 137        | 134        | 134        | 134        | 134        | 134        | 134        |
| 1                  | 113        | 139        | 133        | 143        | 143        | 140        | 140        | 140        | 140        | 140        |
| 2                  | 117        | 111        | 136        | 130        | 140        | 139        | 137        | 137        | 137        | 137        |
| 3                  | 140        | 144        | 137        | 168        | 160        | 172        | 172        | 168        | 168        | 168        |
| 4                  | 118        | 124        | 128        | 121        | 149        | 142        | 153        | 153        | 150        | 150        |
| 5                  | 131        | 130        | 138        | 142        | 134        | 165        | 157        | 170        | 169        | 166        |
| <b>K - 5 Total</b> | <b>752</b> | <b>775</b> | <b>809</b> | <b>841</b> | <b>860</b> | <b>892</b> | <b>893</b> | <b>902</b> | <b>898</b> | <b>895</b> |

Source: DeJONG-HEALY

### Toano Middle School

#### Projected Enrollment - High

| Grade              | 2011-12    | 2012-13    | 2013-14    | 2014-15    | 2015-16    | 2016-17    | 2017-18    | 2018-19    | 2019-20    | 2020-21    |
|--------------------|------------|------------|------------|------------|------------|------------|------------|------------|------------|------------|
| 6                  | 232        | 245        | 242        | 257        | 264        | 251        | 308        | 293        | 316        | 316        |
| 7                  | 245        | 236        | 229        | 247        | 261        | 268        | 254        | 313        | 298        | 321        |
| 8                  | 233        | 258        | 258        | 261        | 260        | 275        | 282        | 268        | 330        | 313        |
| <b>6 - 8 Total</b> | <b>710</b> | <b>739</b> | <b>729</b> | <b>765</b> | <b>785</b> | <b>794</b> | <b>844</b> | <b>874</b> | <b>944</b> | <b>950</b> |

Source: DeJONG-HEALY

### Hornsby Middle School

#### Projected Enrollment - High

| Grade              | 2011-12    | 2012-13    | 2013-14    | 2014-15      | 2015-16      | 2016-17      | 2017-18      | 2018-19      | 2019-20      | 2020-21      |
|--------------------|------------|------------|------------|--------------|--------------|--------------|--------------|--------------|--------------|--------------|
| 6                  | 295        | 311        | 309        | 326          | 335          | 318          | 392          | 372          | 402          | 401          |
| 7                  | 328        | 315        | 332        | 330          | 349          | 359          | 341          | 419          | 398          | 430          |
| 8                  | 312        | 346        | 332        | 350          | 348          | 368          | 378          | 359          | 441          | 420          |
| <b>6 - 8 Total</b> | <b>935</b> | <b>972</b> | <b>973</b> | <b>1,006</b> | <b>1,032</b> | <b>1,045</b> | <b>1,111</b> | <b>1,150</b> | <b>1,241</b> | <b>1,251</b> |

Source: DeJONG-HEALY

### Berkeley Middle School

#### Projected Enrollment - High

| Grade              | 2011-12    | 2012-13    | 2013-14    | 2014-15      | 2015-16      | 2016-17      | 2017-18      | 2018-19      | 2019-20      | 2020-21      |
|--------------------|------------|------------|------------|--------------|--------------|--------------|--------------|--------------|--------------|--------------|
| 6                  | 302        | 319        | 317        | 335          | 344          | 327          | 402          | 382          | 412          | 411          |
| 7                  | 328        | 315        | 332        | 330          | 349          | 359          | 341          | 419          | 398          | 430          |
| 8                  | 299        | 331        | 318        | 336          | 333          | 352          | 362          | 344          | 423          | 402          |
| <b>6 - 8 Total</b> | <b>929</b> | <b>965</b> | <b>967</b> | <b>1,001</b> | <b>1,026</b> | <b>1,038</b> | <b>1,105</b> | <b>1,145</b> | <b>1,233</b> | <b>1,243</b> |

Source: DeJONG-HEALY

## Williamsburg-James City County Public Schools

| <b>Lafayette High School</b>       |                |                |                |                |                |                |                |                |                |                |
|------------------------------------|----------------|----------------|----------------|----------------|----------------|----------------|----------------|----------------|----------------|----------------|
| <b>Projected Enrollment - High</b> |                |                |                |                |                |                |                |                |                |                |
| <b>Grade</b>                       | <b>2011-12</b> | <b>2012-13</b> | <b>2013-14</b> | <b>2014-15</b> | <b>2015-16</b> | <b>2016-17</b> | <b>2017-18</b> | <b>2018-19</b> | <b>2019-20</b> | <b>2020-21</b> |
| 9                                  | 292            | 316            | 349            | 336            | 354            | 352            | 372            | 382            | 363            | 446            |
| 10                                 | 292            | 299            | 323            | 358            | 344            | 362            | 360            | 381            | 392            | 371            |
| 11                                 | 273            | 267            | 273            | 296            | 327            | 315            | 332            | 330            | 348            | 358            |
| 12                                 | 260            | 260            | 255            | 260            | 282            | 312            | 300            | 316            | 314            | 332            |
| <b>9 - 12 Total</b>                | <b>1,117</b>   | <b>1,142</b>   | <b>1,200</b>   | <b>1,250</b>   | <b>1,307</b>   | <b>1,341</b>   | <b>1,364</b>   | <b>1,409</b>   | <b>1,417</b>   | <b>1,507</b>   |

Source: DeJONG-HEALY

| <b>Jamestown High School</b>       |                |                |                |                |                |                |                |                |                |                |
|------------------------------------|----------------|----------------|----------------|----------------|----------------|----------------|----------------|----------------|----------------|----------------|
| <b>Projected Enrollment - High</b> |                |                |                |                |                |                |                |                |                |                |
| <b>Grade</b>                       | <b>2011-12</b> | <b>2012-13</b> | <b>2013-14</b> | <b>2014-15</b> | <b>2015-16</b> | <b>2016-17</b> | <b>2017-18</b> | <b>2018-19</b> | <b>2019-20</b> | <b>2020-21</b> |
| 9                                  | 318            | 345            | 381            | 366            | 386            | 384            | 406            | 417            | 396            | 487            |
| 10                                 | 314            | 321            | 347            | 384            | 369            | 389            | 387            | 409            | 420            | 399            |
| 11                                 | 288            | 282            | 288            | 312            | 345            | 332            | 350            | 348            | 367            | 378            |
| 12                                 | 302            | 303            | 296            | 303            | 328            | 363            | 349            | 367            | 365            | 386            |
| <b>9 - 12 Total</b>                | <b>1,222</b>   | <b>1,251</b>   | <b>1,312</b>   | <b>1,365</b>   | <b>1,428</b>   | <b>1,468</b>   | <b>1,492</b>   | <b>1,541</b>   | <b>1,548</b>   | <b>1,650</b>   |

Source: DeJONG-HEALY

| <b>Warhill High School</b>         |                |                |                |                |                |                |                |                |                |                |
|------------------------------------|----------------|----------------|----------------|----------------|----------------|----------------|----------------|----------------|----------------|----------------|
| <b>Projected Enrollment - High</b> |                |                |                |                |                |                |                |                |                |                |
| <b>Grade</b>                       | <b>2011-12</b> | <b>2012-13</b> | <b>2013-14</b> | <b>2014-15</b> | <b>2015-16</b> | <b>2016-17</b> | <b>2017-18</b> | <b>2018-19</b> | <b>2019-20</b> | <b>2020-21</b> |
| 9                                  | 302            | 327            | 362            | 348            | 366            | 364            | 385            | 396            | 376            | 462            |
| 10                                 | 281            | 287            | 310            | 343            | 330            | 348            | 346            | 365            | 376            | 357            |
| 11                                 | 295            | 289            | 295            | 320            | 354            | 340            | 358            | 356            | 376            | 387            |
| 12                                 | 277            | 277            | 272            | 278            | 300            | 333            | 320            | 337            | 335            | 354            |
| <b>9 - 12 Total</b>                | <b>1,155</b>   | <b>1,180</b>   | <b>1,239</b>   | <b>1,289</b>   | <b>1,350</b>   | <b>1,385</b>   | <b>1,409</b>   | <b>1,454</b>   | <b>1,463</b>   | <b>1,560</b>   |

Source: DeJONG-HEALY

### CONCLUSION

---

The enrollment projections presented in this report were developed using the cohort-survival methodology while incorporating housing and geographic information system data.

As with any projection, the District should pay close attention to live birth counts, enrollment in elementary schools, and in/out migration patterns. Each of these factors will have an impact on future student enrollment.

**DeJONG-HEALY** is pleased to have had the opportunity to provide the District with enrollment projection services. We hope this document will provide the necessary information to make informed decisions about the future of the Williamsburg-James City County Public Schools.