



**Williamsburg-James City County Public Schools**  
**OFFICIAL STUDENT ENROLLMENT REPORT**

September 30, 2009

*Revised: December 2009*

WILLIAMSBURG-JAMES CITY COUNTY PUBLIC SCHOOLS  
Williamsburg, Virginia

**Official Student Enrollment Report**

September 30, 2009

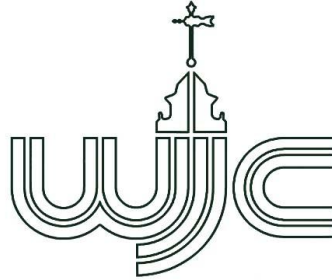


Table of Contents

Introduction	Page 3
FY 2009-2010 Fall Membership	Page 4
Graph: Growth in Total Enrollment by Year	Page 5
Total Enrollment by Grade	Page 6
Graph: Enrollment by Grade	Page 7
Growth in Enrollment by School	Page 8
Graph: Growth in K-12 Enrollment	Page 9
Graph: K-12 Enrollment by Jurisdiction	Page 10
Graph: K-12 Enrollment by Ethnicity	Page 11
Graph: Enrollment by Gender	Page 12
September 30 <sup>th</sup> Enrollment: 2009-2010 School Year	Page 13
Pre-Kindergarten: Counts by School	Page 14
Special Education (K-12)	Page 15
School Level Demographics and Enrollment	Page 16
Division Level Demographics and Enrollment	Page 21

*Finance Department: October 2009*

*Revised: December 2009*



## **INTRODUCTION**

For the 2009-2010 School Year, the enrollment for the Williamsburg-James City County Public Schools has continued to increase, though less than previous years. From the September 30, 2008 K-12 enrollment level of 10,248 students, the School Division experienced an increase of 255 additional students, resulting in a September 30, 2009 K-12 total of 10,503. This increase of 255 students equates to a growth rate of 2.49 percent.

The updated information within these tables will serve as a partial basis for determining next year's enrollment projection, as well as projections for subsequent years. A great deal of other information is used to prepare these projections but the current year's experience will rank as a major source of data on which to predict future events.

As was the case in last year's report, this document provides detailed information about the composition of this year's enrollment, its dispersal among schools, and how this year's student population compares to the previous years. Other tables include such information as the percentage of students on the federal free and reduced lunch program at each school. A separate chart showing Special Education numbers was added last year.

The table, entitled *September 30 Enrollment 2009-2010 School Year* shows a breakdown of the enrollment between the City of Williamsburg and James City County and by race for each school and grade level. Other tables within this document provide more data about this breakdown, as well as race and gender statistics by grade level for each school, and actual class size at each school.

*Revised: 12-2009*

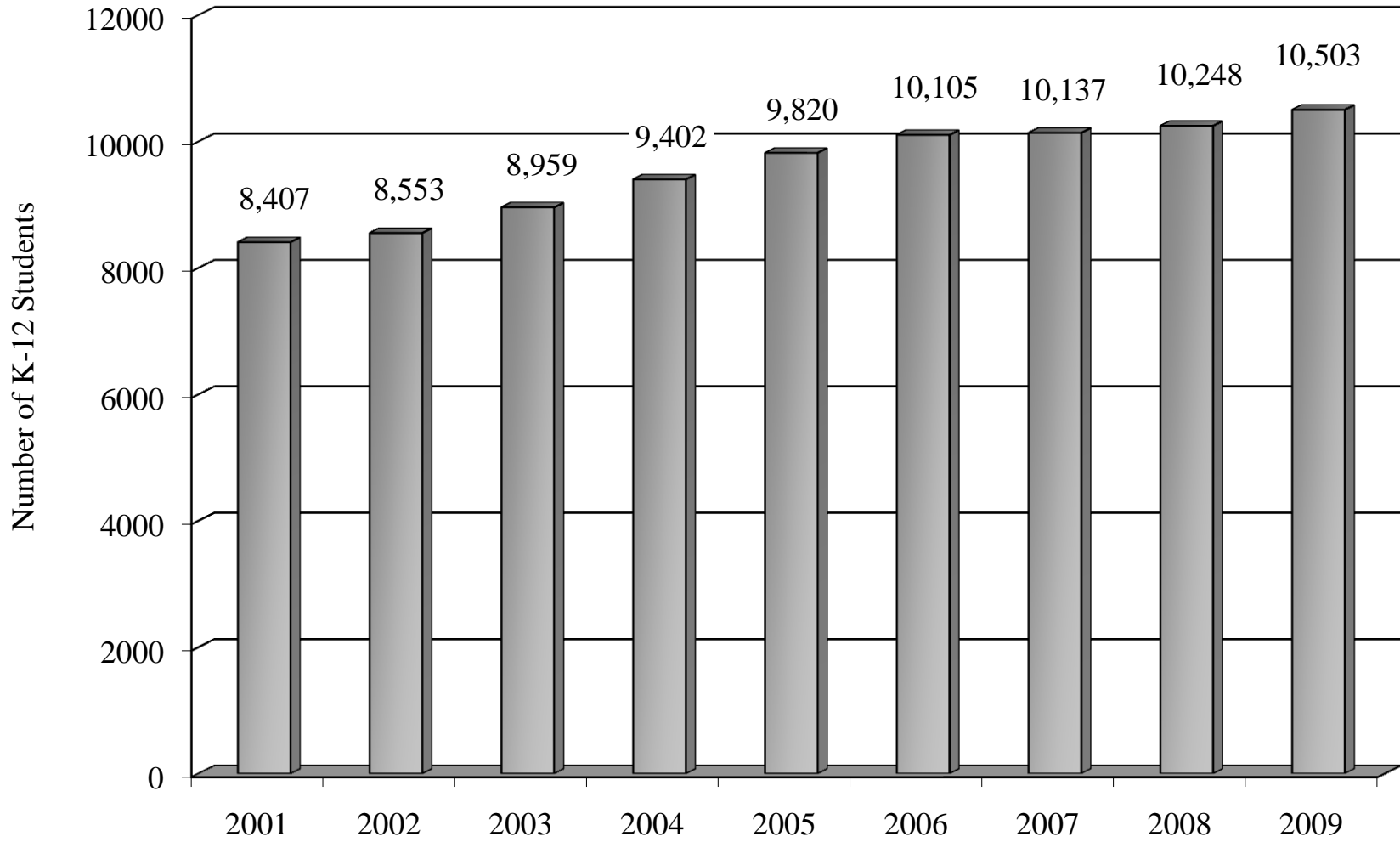
**WJCC Public Schools: 2009-2010 Fall Membership (K-12)**

	<b>9-30-2008 Official</b>	<b>9-30-2009 Projected</b>	<b>9-30-2009 Official</b>	<b>Change from 2008 to 2009 Official</b>	<b>% Difference</b>	<b>Effective Capacity K-12</b>	<b>Difference in Capacity vs. Actual</b>	<b>% of Free/Reduced Lunch*</b>
Baker	550	563	551	1	0.18%	630	(79)	18.15%
Byrd	471	481	510	39	8.28%	570	(60)	36.47%
James River	459	471	466	7	1.53%	540	(74)	56.65%
Matoaka	670	684	688	18	2.69%	720	(32)	18.60%
Montague	609	624	581	(28)	-4.60%	590	(9)	35.46%
Norge	601	616	592	(9)	-1.50%	715	(123)	29.39%
Stonehouse	762	779	831	69	9.06%	725	106	21.42%
Whaley	446	456	456	10	2.24%	515	(59)	36.62%
<b>Subtotal: Elementary</b>	<b>4,568</b>	<b>4,674</b>	<b>4,675</b>	<b>107</b>	<b>2.34%</b>	<b>5,005</b>	<b>(330)</b>	<b>30.01%</b>
Berkeley	804	814	848	44	5.47%	884	(36)	21.23%
Blair	640	648	643	3	0.47%	644	(1)	34.06%
Toano	839	849	859	20	2.38%	822	37	22.12%
<b>Subtotal: Middle</b>	<b>2,283</b>	<b>2,311</b>	<b>2,350</b>	<b>67</b>	<b>2.93%</b>	<b>2,350</b>	<b>-</b>	<b>25.06%</b>
Jamestown	1,261	1,253	1,232	(29)	-2.30%	1208	24	12.50%
Lafayette	1,099	1,091	1,114	15	1.36%	1314	(200)	22.53%
Warhill	1,037	1,031	1,132	95	9.16%	1441	(309)	21.73%
<b>Subtotal: High School</b>	<b>3,397</b>	<b>3,375</b>	<b>3,478</b>	<b>81</b>	<b>2.38%</b>	<b>3,963</b>	<b>(485)</b>	<b>18.72%</b>
<b>Total-Division</b>	<b>10,248</b>	<b>10,360</b>	<b>10,503</b>	<b>255</b>	<b>2.49%</b>	<b>11,318</b>	<b>(815)</b>	<b>25.16%</b>
Grade Level:	K	702	734	732	30	4.27%		
	1	712	722	734	22	3.09%		
	2	762	738	750	(12)	-1.57%		
	3	776	805	802	26	3.35%		
	4	829	805	801	(28)	-3.38%		
	5	787	870	856	69	8.77%		
	6	749	789	787	38	5.07%		
	7	748	759	783	35	4.68%		
	8	786	763	780	(6)	-0.76%		
	9	956	913	940	(16)	-1.67%		
	10	901	924	940	39	4.33%		
	11	785	792	848	63	8.03%		
	12	755	746	750	(5)	-0.66%		
<b>Total</b>	<b>10,248</b>	<b>10,360</b>	<b>10,503</b>	<b>255</b>	<b>2.49%</b>			

*\*Source:  
Child Nutrition Services  
(excluding Pre-K)*

# Growth in Total Enrollment by Year

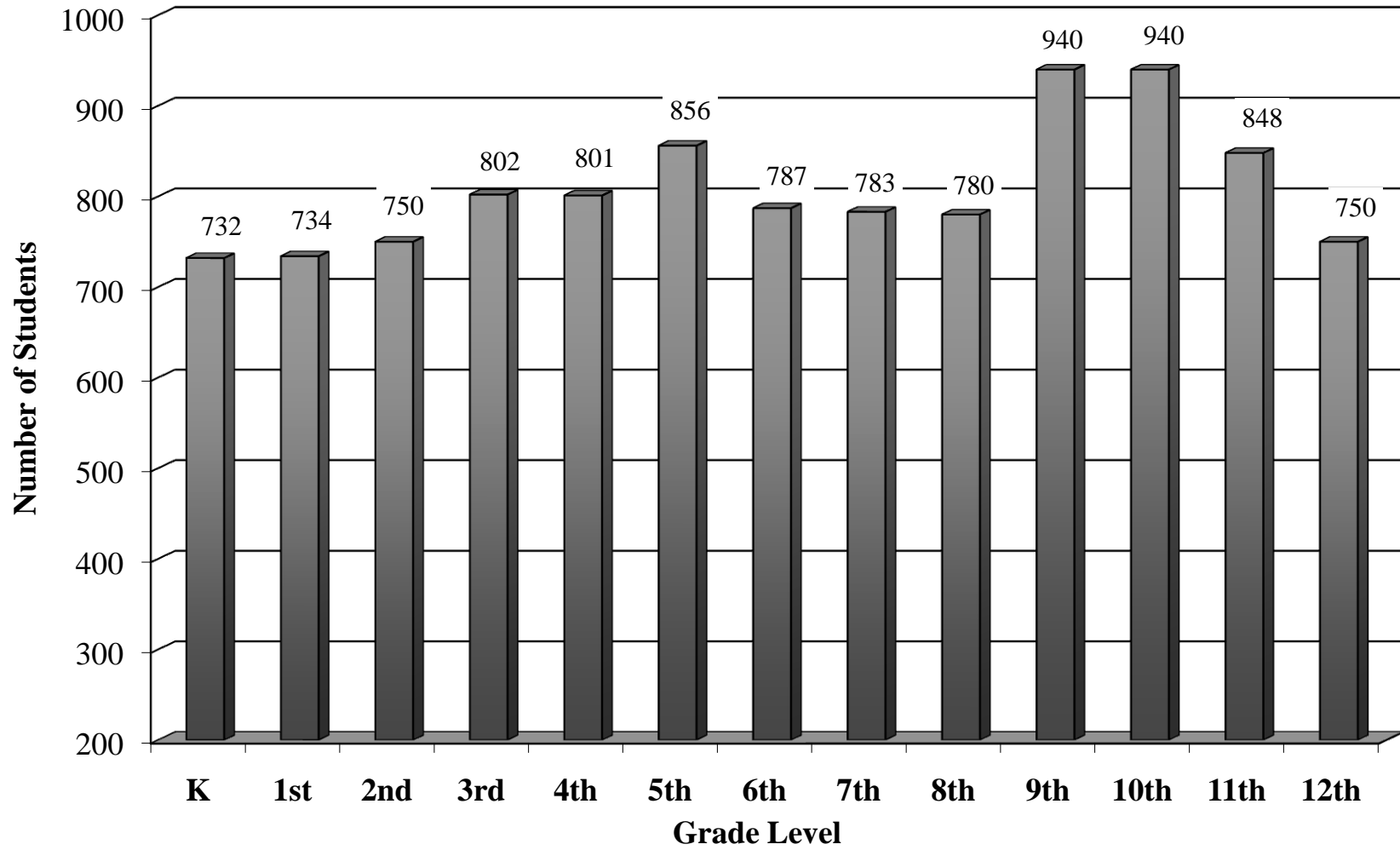
## 2009-2010 School Year



**WILLIAMSBURG-JAMES CITY COUNTY PUBLIC SCHOOLS**  
**2009-2010 Student Enrollment**  
**Total Enrollment by Grade**

	<b>K</b>	<b>1</b>	<b>2</b>	<b>3</b>	<b>4</b>	<b>5</b>	<b>6</b>	<b>7</b>	<b>8</b>	<b>9</b>	<b>10</b>	<b>11</b>	<b>12</b>	<b>FY 2010 Grand Total</b>	<b>FY09 Actual</b>	<b>Change</b>
<b>Baker</b>	77	77	88	96	108	105								<b>551</b>	550	1
<b>Byrd</b>	73	89	87	92	82	87								<b>510</b>	471	39
<b>James River</b>	85	68	77	78	79	79								<b>466</b>	459	7
<b>Matoaka</b>	103	103	118	118	106	140								<b>688</b>	670	18
<b>Montague</b>	100	97	87	98	95	104								<b>581</b>	609	(28)
<b>Norge</b>	80	96	101	96	109	110								<b>592</b>	601	(9)
<b>Stonehouse</b>	139	128	135	145	142	142								<b>831</b>	762	69
<b>Whaley</b>	75	76	57	79	80	89								<b>456</b>	446	10
<b>Subtotal: Elementary</b>	<b>732</b>	<b>734</b>	<b>750</b>	<b>802</b>	<b>801</b>	<b>856</b>								<b>4,675</b>	<b>4,568</b>	<b>107</b>
<b>Berkeley</b>							293	274	281					<b>848</b>	804	44
<b>Blair</b>							202	220	221					<b>643</b>	640	3
<b>Toano</b>							292	289	278					<b>859</b>	839	20
<b>Subtotal: Middle</b>							<b>787</b>	<b>783</b>	<b>780</b>					<b>2,350</b>	<b>2,283</b>	<b>67</b>
<b>Jamestown</b>										328	312	308	284	<b>1,232</b>	1,261	(29)
<b>Lafayette</b>										299	311	270	234	<b>1,114</b>	1,099	15
<b>Warhill</b>										313	317	270	232	<b>1,132</b>	1,037	95
<b>Subtotal: High School</b>										<b>940</b>	<b>940</b>	<b>848</b>	<b>750</b>	<b>3,478</b>	<b>3,397</b>	<b>81</b>
<b>Total: Division</b>	<b>732</b>	<b>734</b>	<b>750</b>	<b>802</b>	<b>801</b>	<b>856</b>	<b>787</b>	<b>783</b>	<b>780</b>	<b>940</b>	<b>940</b>	<b>848</b>	<b>750</b>	<b>10,503</b>	<b>10,248</b>	<b>255</b>

## Enrollment by Grade 2009 - 2010 School Year



**WILLIAMSBURG-JAMES CITY COUNTY PUBLIC SCHOOLS**  
**Growth in K-12 Enrollment by School**  
*from 9-30-2001 to 9-30-2009*

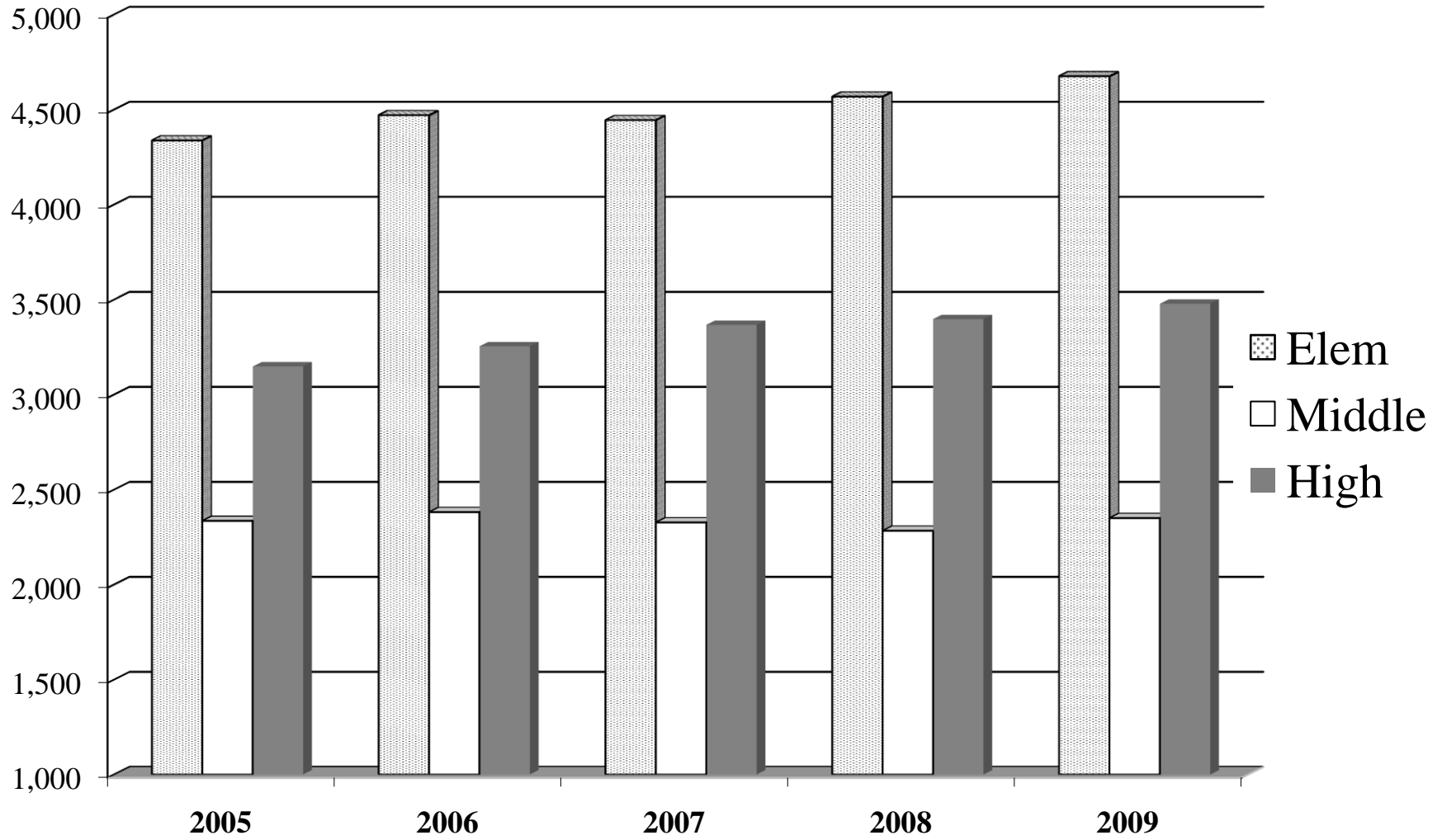
	Actual 9/30/2001	Actual 9/30/2002	Actual 9/30/2003	Actual 9/30/2004	Actual 9/30/2005	Actual 9/30/2006	Actual 9/30/2007	Actual 9/30/2008	Actual 9/30/2009	From 2008 to 2009		3-Year Net Gain/Loss
										Gain/ (Loss)	Percent	
<b><u>I. Elementary</u></b>												
Baker	673	687	722	772	752	752	538	550	551	1	0.19%	(201)
Byrd	526	496	482	466	520	548	468	471	510	39	8.33%	(38)
James River	398	372	387	434	469	456	458	459	466	7	1.53%	10
Matoaka	-	-	-	-	-	-	589	670	688	18	-	688
Montague	591	612	689	738	779	830	624	609	581	(28)	-4.49%	(249)
Norge	645	625	642	644	657	636	602	601	592	(9)	-1.50%	(44)
Stonehouse	493	502	525	582	605	675	737	762	831	69	9.36%	156
Whaley	465	498	497	534	555	573	428	446	456	10	2.34%	(117)
<b>SubTotal: Elem</b>	<b>3,791</b>	<b>3,792</b>	<b>3,944</b>	<b>4,170</b>	<b>4,337</b>	<b>4,470</b>	<b>4,444</b>	<b>4,568</b>	<b>4,675</b>	107	2.41%	205
<b><u>II. Middle School</u></b>												
Berkeley	720	749	816	851	876	865	823	804	848	44	5.35%	(17)
Blair	533	580	607	583	628	658	679	640	643	3	0.44%	(15)
Toano	757	758	783	811	831	858	825	839	859	20	2.42%	1
<b>SubTotal: Middle</b>	<b>2,010</b>	<b>2,087</b>	<b>2,206</b>	<b>2,245</b>	<b>2,335</b>	<b>2,381</b>	<b>2,327</b>	<b>2,283</b>	<b>2,350</b>	67	2.88%	(31)
<b><u>III. High School</u></b>												
Jamestown	1,215	1,256	1,331	1,451	1,524	1,591	1,344	1,261	1,232	(29)	-2.16%	(359)
Lafayette	1,391	1,418	1,478	1,536	1,624	1,663	1,266	1,099	1,114	15	1.18%	(549)
Warhill	-	-	-	-	-	-	756	1,037	1,132	95	-	1,132
<b>SubTotal: High</b>	<b>2,606</b>	<b>2,674</b>	<b>2,809</b>	<b>2,987</b>	<b>3,148</b>	<b>3,254</b>	<b>3,366</b>	<b>3,397</b>	<b>3,478</b>	81	2.41%	224
<b>Total: Regular Ed</b>	<b>8,407</b>	<b>8,553</b>	<b>8,959</b>	<b>9,402</b>	<b>9,820</b>	<b>10,105</b>	<b>10,137</b>	<b>10,248</b>	<b>10,503</b>	255	2.52%	398
<b>Total Enrollment</b>	<b>8,407</b>	<b>8,553</b>	<b>8,959</b>	<b>9,402</b>	<b>9,820</b>	<b>10,105</b>	<b>10,137</b>	<b>10,248</b>	<b>10,503</b>	255	2.52%	398

Stonehouse Elementary opened in September 2000.

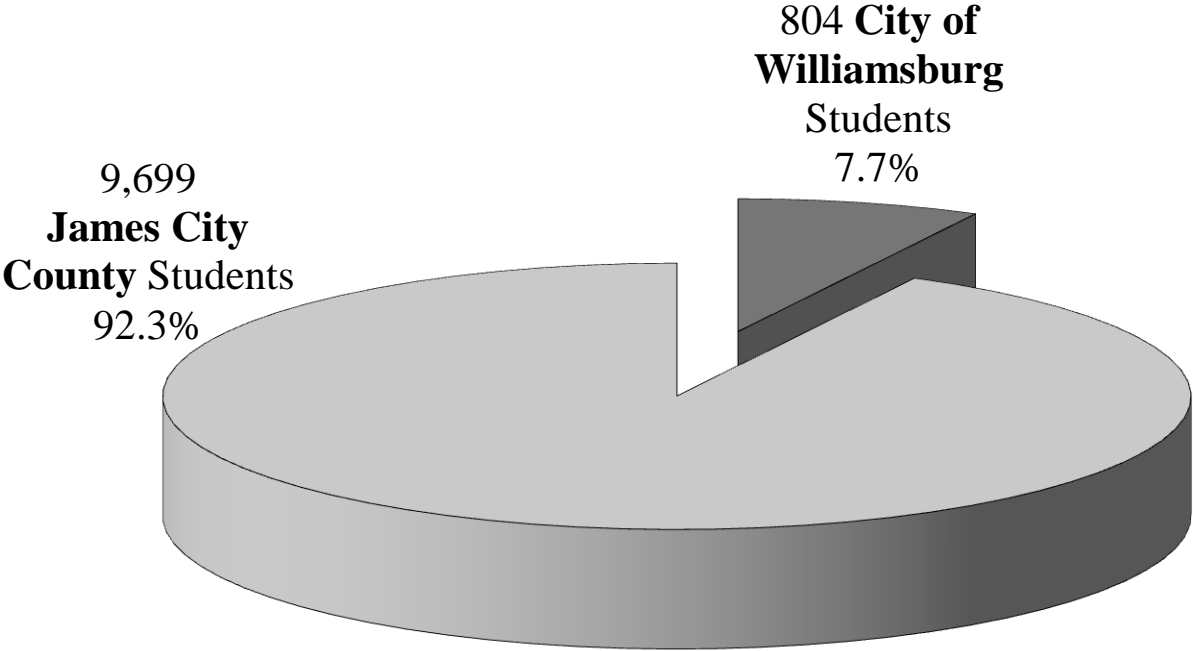
A re-districting took place in FY05 between Clara Byrd Baker and Rawls Byrd Elementary Schools.

Matoaka Elementary School and Warhill High School both opened in September 2007.

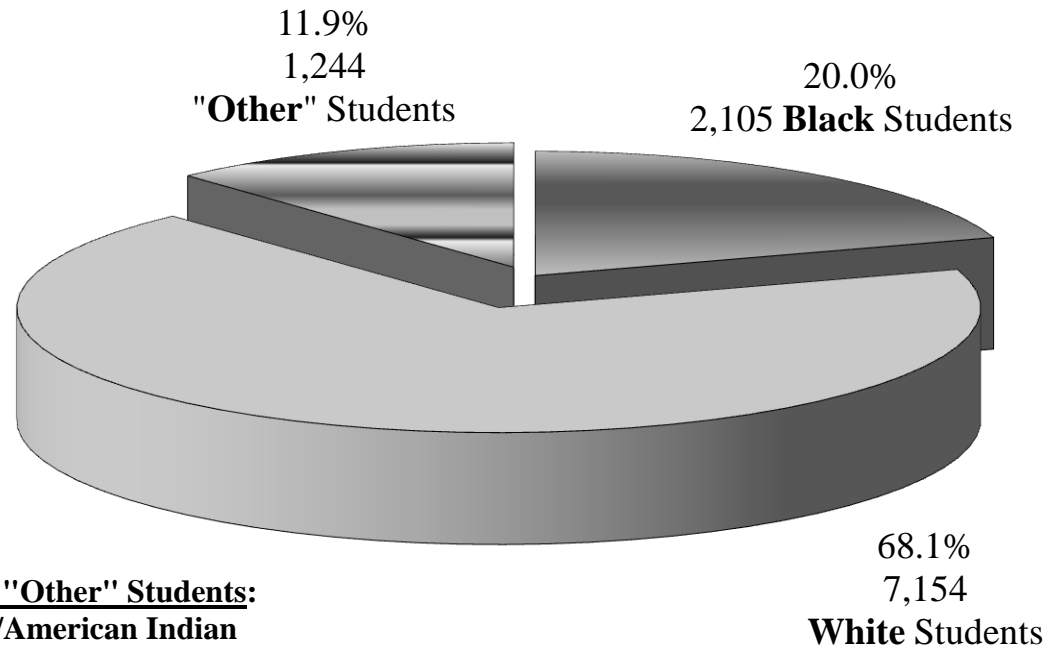
## Growth in K-12 Enrollment Five Year History



**K-12 Enrollment by Jurisdiction**  
2009 - 2010 School Year



## K-12 Enrollment by Ethnicity 2009 - 2010 School Year

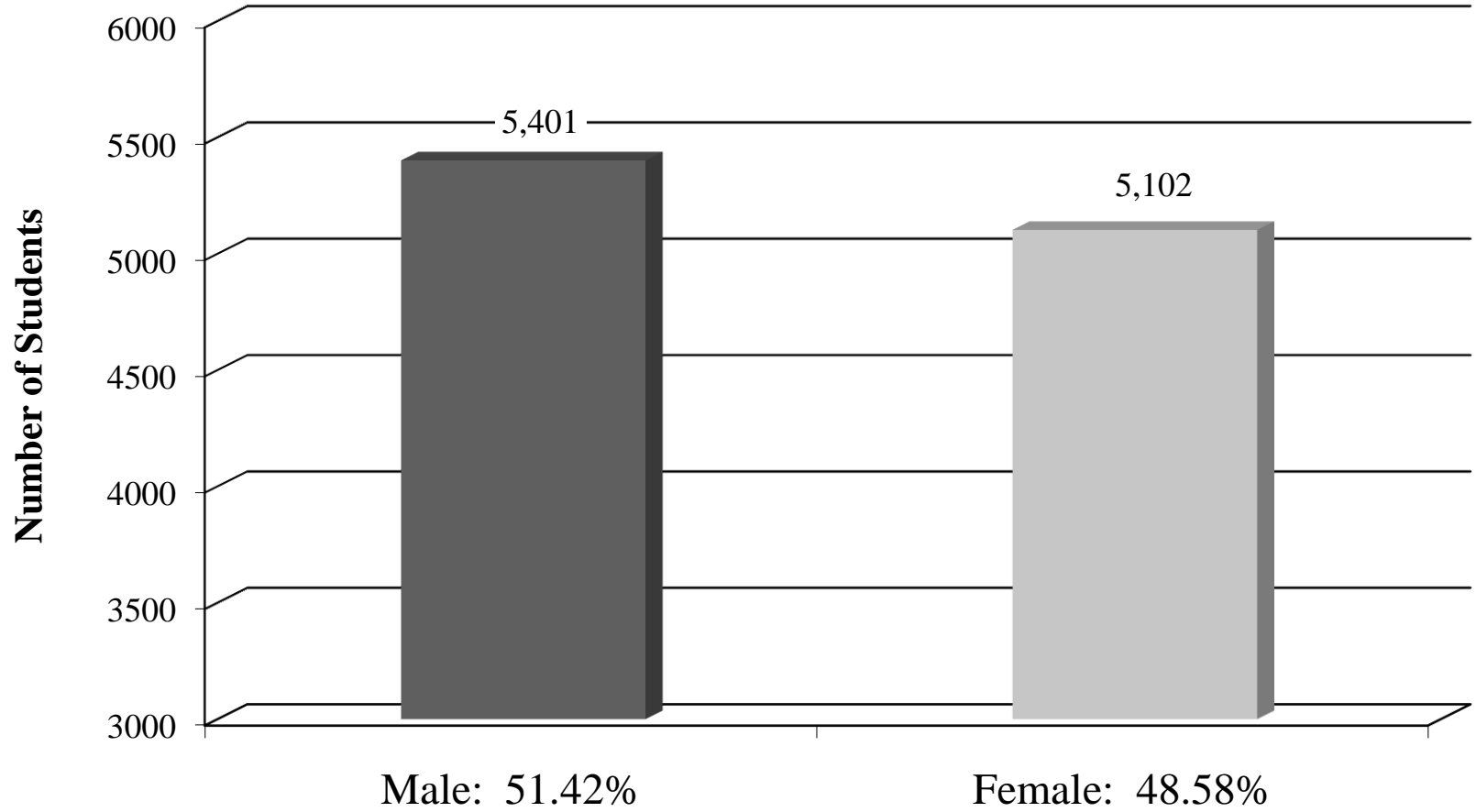


**Breakdown of 1,244 "Other" Students:**

- 96 Native Alaskan/American Indian**
- 317 Asian**
- 617 Hispanic**
- 211 Unspecified**
- 3 Native Hawaiian**

*Does not include Pre-K Students*

## Enrollment by Gender 2009-2010 School Year



**WJCC Public Schools    September 30th Enrollment    2009-2010 School Year**

	City of Williamsburg		County of James City		Total	Black		White		Other		
Baker	34	6.2%	517	93.8%	551	82	14.9%	406	73.7%	63	11.4%	
Byrd	26	5.1%	484	94.9%	510	99	19.4%	342	67.1%	69	13.5%	
James River	2	0.4%	464	99.6%	466	166	35.6%	227	48.7%	73	15.7%	
Matoaka	8	1.2%	680	98.8%	688	94	13.7%	491	71.4%	103	15.0%	
Montague	7	1.2%	574	98.8%	581	164	28.2%	340	58.5%	77	13.3%	
Norge	3	0.5%	589	99.5%	592	116	19.6%	390	65.9%	86	14.5%	
Stonehouse	1	0.1%	830	99.9%	831	118	14.2%	613	73.8%	100	12.0%	
Whaley	289	63.4%	167	36.6%	456	107	23.5%	277	60.7%	72	15.8%	
<b>Elementary Sub</b>	<b>370</b>	<b>7.9%</b>	<b>4,305</b>	<b>92.1%</b>	<b>4,675</b>	<b>946</b>	<b>20.2%</b>	<b>3,086</b>	<b>66.0%</b>	<b>643</b>	<b>13.8%</b>	
Berkeley	146	17.2%	702	82.8%	848	150	17.7%	603	71.1%	95	11.2%	
Blair	38	5.9%	605	94.1%	643	155	24.1%	407	63.3%	81	12.6%	
Toano	7	0.8%	852	99.2%	859	157	18.3%	623	72.5%	79	9.2%	
<b>Middle SubTotal</b>	<b>191</b>	<b>8.1%</b>	<b>2,159</b>	<b>91.9%</b>	<b>2,350</b>	<b>462</b>	<b>19.7%</b>	<b>1,633</b>	<b>69.5%</b>	<b>255</b>	<b>10.9%</b>	
Jamestown	5	0.4%	1,227	99.6%	1,232	152	12.3%	948	76.9%	132	10.7%	
Lafayette	176	15.8%	938	84.2%	1,114	297	26.7%	700	62.8%	117	10.5%	
Warhill	62	5.5%	1,070	94.5%	1,132	248	21.9%	787	69.5%	97	8.6%	
<b>High SubTotal</b>	<b>243</b>	<b>7.0%</b>	<b>3,235</b>	<b>93.0%</b>	<b>3,478</b>	<b>697</b>	<b>20.0%</b>	<b>2,435</b>	<b>70.0%</b>	<b>346</b>	<b>9.9%</b>	
<b>Total Division</b>	<b>804</b>	<b>7.7%</b>	<b>9,699</b>	<b>92.3%</b>	<b>10,503</b>	<b>2,105</b>	<b>20.0%</b>	<b>7,154</b>	<b>68.1%</b>	<b>1,244</b>	<b>11.8%</b>	
Grade:	K	64	8.7%	668	91.3%	732	137	18.7%	472	64.5%	123	16.8%
	1	57	7.8%	677	92.2%	734	154	21.0%	467	63.6%	113	15.4%
	2	52	6.9%	698	93.1%	750	153	20.4%	496	66.1%	101	13.5%
	3	61	7.6%	741	92.4%	802	150	18.7%	550	68.6%	102	12.7%
	4	65	8.1%	736	91.9%	801	165	20.6%	536	66.9%	100	12.5%
	5	71	8.3%	785	91.7%	856	187	21.8%	565	66.0%	104	12.1%
	6	68	8.6%	719	91.4%	787	164	20.8%	537	68.2%	86	10.9%
	7	67	8.6%	716	91.4%	783	153	19.5%	536	68.5%	94	12.0%
	8	56	7.2%	724	92.8%	780	145	18.6%	560	71.8%	75	9.6%
	9	71	7.6%	869	92.4%	940	194	20.6%	643	68.4%	103	11.0%
	10	82	8.7%	858	91.3%	940	203	21.6%	636	67.7%	101	10.7%
	11	53	6.3%	795	93.8%	848	169	19.9%	604	71.2%	75	8.8%
	12	37	4.9%	713	95.1%	750	131	17.5%	552	73.6%	67	8.9%
<b>Total</b>	<b>804</b>	<b>7.7%</b>	<b>9,699</b>	<b>92.3%</b>	<b>10,503</b>	<b>2,105</b>	<b>20.0%</b>	<b>7,154</b>	<b>68.1%</b>	<b>1,244</b>	<b>11.8%</b>	

**WILLIAMSBURG-JAMES CITY COUNTY PUBLIC SCHOOLS**

**2009 - 2010 Student Enrollment**

**Total Enrollment by Grade  
Including Pre-Kindergarten Students**

	<b>PreK</b>	<b>K</b>	<b>1</b>	<b>2</b>	<b>3</b>	<b>4</b>	<b>5</b>	<b>6</b>	<b>7</b>	<b>8</b>	<b>9</b>	<b>10</b>	<b>11</b>	<b>12</b>	FY09-10 <b>Grand Total</b>
<b>Baker</b>	<b>25</b>	77	77	88	96	108	105								<b>576</b>
<b>Byrd</b>	<b>73</b>	73	89	87	92	82	87								<b>583</b>
<b>James River</b>	<b>19</b>	85	68	77	78	79	79								<b>485</b>
<b>Matoaka</b>	<b>0</b>	103	103	118	118	106	140								<b>688</b>
<b>Montague</b>	<b>33</b>	100	97	87	98	95	104								<b>614</b>
<b>Norge</b>	<b>98</b>	80	96	101	96	109	110								<b>690</b>
<b>Stonehouse</b>	<b>46</b>	139	128	135	145	142	142								<b>877</b>
<b>Whaley</b>	<b>0</b>	75	76	57	79	80	89								<b>456</b>
<b>Subtotal: Elem</b>	<b>294</b>	<b>732</b>	<b>734</b>	<b>750</b>	<b>802</b>	<b>801</b>	<b>856</b>								<b>4,969</b>
<b>Berkeley</b>								293	274	281					<b>848</b>
<b>Blair</b>								202	220	221					<b>643</b>
<b>Toano</b>								292	289	278					<b>859</b>
<b>Subtotal: Middle</b>								<b>787</b>	<b>783</b>	<b>780</b>					<b>2,350</b>
<b>Jamestown</b>											328	312	308	284	<b>1,232</b>
<b>Lafayette</b>											299	311	270	234	<b>1,114</b>
<b>Warhill</b>											313	317	270	232	<b>1,132</b>
<b>Subtotal: High</b>											<b>940</b>	<b>940</b>	<b>848</b>	<b>750</b>	<b>3,478</b>
<b>Total~Division</b>	<b>294</b>	<b>732</b>	<b>734</b>	<b>750</b>	<b>802</b>	<b>801</b>	<b>856</b>	<b>787</b>	<b>783</b>	<b>780</b>	<b>940</b>	<b>940</b>	<b>848</b>	<b>750</b>	<b>10,797</b>

**WILLIAMSBURG-JAMES CITY COUNTY PUBLIC SCHOOLS  
2009 - 2010 Student Enrollment**

**Special Education  
(includes Pre-K Students)**

	<b>AUT</b>	<b>DB</b>	<b>DD</b>	<b>ED</b>	<b>HI</b>	<b>MD</b>	<b>MR</b>	<b>OHI</b>	<b>OI</b>	<b>SD</b>	<b>SLD</b>	<b>SLI</b>	<b>TBI</b>	<b>VI</b>	<b>Total</b>
<b>Baker</b>	6	0	18	1	0	0	8	7	0	0	11	18	0	0	<b>69</b>
<b>Byrd</b>	4	0	31	1	0	9	2	6	0	0	15	35	1	0	<b>104</b>
<b>James River</b>	3	0	10	1	0	0	0	8	0	0	12	32	0	0	<b>66</b>
<b>Matoaka</b>	15	0	13	0	0	1	1	7	0	0	11	21	0	0	<b>69</b>
<b>Montague</b>	4	0	37	6	0	0	2	8	0	0	8	19	0	0	<b>84</b>
<b>Norge</b>	0	0	46	1	0	8	0	9	0	0	12	29	1	2	<b>108</b>
<b>Stonehouse</b>	4	0	29	3	11	0	1	12	0	0	18	48	0	0	<b>126</b>
<b>Whaley</b>	1	0	5	0	0	0	0	5	1	0	9	24	0	0	<b>45</b>
<b>Subtotal: Elementary</b>	<b>37</b>	<b>0</b>	<b>189</b>	<b>13</b>	<b>11</b>	<b>18</b>	<b>14</b>	<b>62</b>	<b>1</b>	<b>0</b>	<b>96</b>	<b>226</b>	<b>2</b>	<b>2</b>	<b>671</b>
<b>Berkeley</b>	6	0	0	6	0	1	7	16	0	0	42	5	0	0	<b>83</b>
<b>Blair</b>	5	0	0	4	0	4	3	19	0	1	34	17	1	0	<b>88</b>
<b>Toano</b>	3	0	0	4	0	1	7	21	1	0	43	11	0	0	<b>91</b>
<b>Subtotal: Middle School</b>	<b>14</b>	<b>0</b>	<b>0</b>	<b>14</b>	<b>0</b>	<b>6</b>	<b>17</b>	<b>56</b>	<b>1</b>	<b>1</b>	<b>119</b>	<b>33</b>	<b>1</b>	<b>0</b>	<b>262</b>
<b>Jamestown</b>	9	0	0	5	0	5	12	31	1	0	41	3	0	0	<b>107</b>
<b>Lafayette</b>	7	0	0	10	3	4	10	34	1	1	58	3	2	0	<b>133</b>
<b>Warhill</b>	4	0	0	16	3	3	13	37	1	0	73	4	1	1	<b>156</b>
<b>Subtotal: High School</b>	<b>20</b>	<b>0</b>	<b>0</b>	<b>31</b>	<b>6</b>	<b>12</b>	<b>35</b>	<b>102</b>	<b>3</b>	<b>1</b>	<b>172</b>	<b>10</b>	<b>3</b>	<b>1</b>	<b>396</b>
<b>Total: Division</b>	<b>71</b>	<b>0</b>	<b>189</b>	<b>58</b>	<b>17</b>	<b>36</b>	<b>66</b>	<b>220</b>	<b>5</b>	<b>2</b>	<b>387</b>	<b>269</b>	<b>6</b>	<b>3</b>	<b>1,329</b>

**Special Ed Codes:** AUT =Autism  
DB =Deaf-Blindness  
DD =Developmentally Delayed  
ED =Emotional Disturbance  
HI =Hearing Impairment  
MD =Multiple Disabilities  
MR =Mental Retardation  
OHI =Other Health Impairment  
OI =Orthopedic Impairment  
SD =Severe Disability  
SLD =Specific Learning Disability  
SLI =Speech or Language Impairment  
TBI =Traumatic Brain  
VI =Visual Impairment

**CLARA BYRD BAKER Elementary School**

Grade	City of Williamsburg								James City County								Totals		
	Male				Female				Male				Female				City	County	Total
	Black	White	Other	Total	Black	White	Other	Total	Black	White	Other	Total	Black	White	Other	Total			
K	2	1	0	3	3	1	1	5	3	23	9	35	2	25	7	34	8	69	77
1	2	0	0	2	2	0	0	2	4	33	4	41	4	25	3	32	4	73	77
2	3	1	0	4	1	2	0	3	7	24	5	36	1	41	3	45	7	81	88
3	4	0	0	4	0	0	0	0	6	44	3	53	5	29	5	39	4	92	96
4	3	1	0	4	1	1	0	2	6	43	7	56	5	34	7	46	6	102	108
5	4	1	0	5	0	0	0	0	8	37	7	52	6	40	2	48	5	100	105
<b>TOTAL</b>	<b>18</b>	<b>4</b>	<b>0</b>	<b>22</b>	<b>7</b>	<b>4</b>	<b>1</b>	<b>12</b>	<b>34</b>	<b>204</b>	<b>35</b>	<b>273</b>	<b>23</b>	<b>194</b>	<b>27</b>	<b>244</b>	<b>34</b>	<b>517</b>	<b>551</b>

**RAWLS BYRD Elementary School**

Grade	City of Williamsburg								James City County								Totals		
	Male				Female				Male				Female				City	County	Total
	Black	White	Other	Total	Black	White	Other	Total	Black	White	Other	Total	Black	White	Other	Total			
K	0	1	0	1	2	1	1	4	6	25	6	37	8	16	7	31	5	68	73
1	0	1	1	2	0	0	1	1	11	30	8	49	7	25	5	37	3	86	89
2	2	0	1	3	1	0	1	2	7	33	3	43	8	26	5	39	5	82	87
3	1	1	0	2	0	0	0	0	4	32	8	44	7	35	4	46	2	90	92
4	1	0	1	2	1	0	1	2	4	33	2	39	7	25	7	39	4	78	82
5	3	0	1	4	1	0	2	3	7	32	2	41	11	26	2	39	7	80	87
<b>TOTAL</b>	<b>7</b>	<b>3</b>	<b>4</b>	<b>14</b>	<b>5</b>	<b>1</b>	<b>6</b>	<b>12</b>	<b>39</b>	<b>185</b>	<b>29</b>	<b>253</b>	<b>48</b>	<b>153</b>	<b>30</b>	<b>231</b>	<b>26</b>	<b>484</b>	<b>510</b>

**JAMES RIVER Elementary School**

Grade	City of Williamsburg								James City County								Totals		
	Male				Female				Male				Female				City	County	Total
	Black	White	Other	Total	Black	White	Other	Total	Black	White	Other	Total	Black	White	Other	Total			
K	0	0	0	0	0	0	0	0	15	17	8	40	9	23	13	45	0	85	85
1	0	0	0	0	0	0	0	0	16	19	3	38	10	17	3	30	0	68	68
2	0	0	0	0	0	0	0	0	16	14	5	35	16	20	6	42	0	77	77
3	0	0	0	0	1	1	0	2	9	21	9	39	14	20	3	37	2	76	78
4	0	0	0	0	0	0	0	0	18	14	7	39	16	19	5	40	0	79	79
5	0	0	0	0	0	0	0	0	13	22	5	40	13	20	6	39	0	79	79
<b>TOTAL</b>	<b>0</b>	<b>0</b>	<b>0</b>	<b>0</b>	<b>1</b>	<b>1</b>	<b>0</b>	<b>2</b>	<b>87</b>	<b>107</b>	<b>37</b>	<b>231</b>	<b>78</b>	<b>119</b>	<b>36</b>	<b>233</b>	<b>2</b>	<b>464</b>	<b>466</b>

**MATOAKA Elementary School**

Grade	City of Williamsburg								James City County								Totals		
	Male				Female				Male				Female				City	County	Total
	Black	White	Other	Total	Black	White	Other	Total	Black	White	Other	Total	Black	White	Other	Total			
K	1	2	0	3	0	0	0	0	10	39	7	56	5	28	11	44	3	100	103
1	0	0	0	0	0	0	0	0	8	39	7	54	5	35	9	49	0	103	103
2	0	0	0	0	1	1	0	2	6	48	8	62	6	38	10	54	2	116	118
3	1	0	0	1	0	0	0	0	7	42	8	57	10	41	9	60	1	117	118
4	1	0	0	1	0	0	0	0	7	39	10	56	7	37	5	49	1	105	106
5	0	0	0	0	1	0	0	1	12	57	9	78	6	45	10	61	1	139	140
<b>TOTAL</b>	<b>3</b>	<b>2</b>	<b>0</b>	<b>5</b>	<b>2</b>	<b>1</b>	<b>0</b>	<b>3</b>	<b>50</b>	<b>264</b>	<b>49</b>	<b>363</b>	<b>39</b>	<b>224</b>	<b>54</b>	<b>317</b>	<b>8</b>	<b>680</b>	<b>688</b>

**D. J. MONTAGUE Elementary School**

Grade	City of Williamsburg								James City County								Totals		
	Male				Female				Male				Female				City	County	Total
	Black	White	Other	Total	Black	White	Other	Total	Black	White	Other	Total	Black	White	Other	Total			
K	0	0	0	0	0	0	0	0	13	34	4	51	9	33	7	49	0	100	100
1	1	0	0	1	0	0	0	0	11	21	12	44	15	30	7	52	1	96	97
2	1	0	0	1	0	0	0	0	10	29	5	44	16	22	4	42	1	86	87
3	0	0	0	0	1	0	0	1	15	31	5	51	11	31	4	46	1	97	98
4	0	1	0	1	0	2	0	2	12	29	8	49	13	25	5	43	3	92	95
5	0	1	0	1	0	0	0	0	21	23	11	55	15	28	5	48	1	103	104
<b>TOTAL</b>	<b>2</b>	<b>2</b>	<b>0</b>	<b>4</b>	<b>1</b>	<b>2</b>	<b>0</b>	<b>3</b>	<b>82</b>	<b>167</b>	<b>45</b>	<b>294</b>	<b>79</b>	<b>169</b>	<b>32</b>	<b>280</b>	<b>7</b>	<b>574</b>	<b>581</b>

**NORGE Elementary School**

Grade	City of Williamsburg								James City County								Totals		
	Male				Female				Male				Female				City	County	Total
	Black	White	Other	Total	Black	White	Other	Total	Black	White	Other	Total	Black	White	Other	Total			
K	0	1	0	1	0	0	0	0	5	28	10	43	7	25	4	36	1	79	80
1	0	1	0	1	0	0	0	0	11	26	10	47	13	28	7	48	1	95	96
2	0	0	0	0	0	0	0	0	12	31	9	52	7	33	9	49	0	101	101
3	0	1	0	1	0	0	0	0	7	31	9	47	9	35	4	48	1	95	96
4	0	0	0	0	0	0	0	0	16	34	6	56	10	39	4	53	0	109	109
5	0	0	0	0	0	0	0	0	9	41	7	57	10	36	7	53	0	110	110
<b>TOTAL</b>	<b>0</b>	<b>3</b>	<b>0</b>	<b>3</b>	<b>0</b>	<b>0</b>	<b>0</b>	<b>0</b>	<b>60</b>	<b>191</b>	<b>51</b>	<b>302</b>	<b>56</b>	<b>196</b>	<b>35</b>	<b>287</b>	<b>3</b>	<b>589</b>	<b>592</b>

**STONEHOUSE Elementary School**

Grade	City of Williamsburg								James City County								Totals		
	Male				Female				Male				Female				City	County	Total
	Black	White	Other	Total	Black	White	Other	Total	Black	White	Other	Total	Black	White	Other	Total			
K	0	0	0	0	0	0	0	0	12	52	1	65	9	52	13	74	0	139	139
1	0	0	0	0	0	0	0	0	12	35	11	58	9	52	9	70	0	128	128
2	0	0	0	0	0	0	1	1	8	51	10	69	9	46	10	65	1	134	135
3	0	0	0	0	0	0	0	0	10	55	9	74	12	47	12	71	0	145	145
4	0	0	0	0	0	0	0	0	10	63	8	81	8	47	6	61	0	142	142
5	0	0	0	0	0	0	0	0	10	54	6	70	9	59	4	72	0	142	142
<b>TOTAL</b>	0	0	0	0	0	0	1	1	62	310	45	417	56	303	54	413	1	830	831

**MATTHEW WHALEY Elementary School**

Grade	City of Williamsburg								James City County								Totals		
	Male				Female				Male				Female				City	County	Total
	Black	White	Other	Total	Black	White	Other	Total	Black	White	Other	Total	Black	White	Other	Total			
K	5	14	6	25	5	11	6	22	2	13	1	16	4	7	1	12	47	28	75
1	5	16	5	26	4	12	6	22	3	10	1	14	1	12	1	14	48	28	76
2	2	8	3	13	7	13	3	23	5	8	0	13	1	7	0	8	36	21	57
3	7	18	4	29	6	11	4	21	1	14	1	16	2	10	1	13	50	29	79
4	6	15	5	26	5	15	5	25	3	9	0	12	5	11	1	17	51	29	80
5	7	14	7	28	8	13	8	29	8	10	2	20	5	6	1	12	57	32	89
<b>TOTAL</b>	32	85	30	147	35	75	32	142	22	64	5	91	18	53	5	76	289	167	456

**BERKELEY Middle School**

Grade	City of Williamsburg								James City County								Totals		
	Male				Female				Male				Female				City	County	Total
	Black	White	Other	Total	Black	White	Other	Total	Black	White	Other	Total	Black	White	Other	Total			
6	13	12	2	27	17	8	0	25	16	102	13	131	15	80	15	110	52	241	293
7	9	19	5	33	9	5	4	18	7	102	12	121	21	67	14	102	51	223	274
8	9	5	5	19	9	11	4	24	11	101	9	121	14	91	12	117	43	238	281
<b>TOTAL</b>	<b>31</b>	<b>36</b>	<b>12</b>	<b>79</b>	<b>35</b>	<b>24</b>	<b>8</b>	<b>67</b>	<b>34</b>	<b>305</b>	<b>34</b>	<b>373</b>	<b>50</b>	<b>238</b>	<b>41</b>	<b>329</b>	<b>146</b>	<b>702</b>	<b>848</b>

**JAMES BLAIR Middle School**

Grade	City of Williamsburg								James City County								Totals		
	Male				Female				Male				Female				City	County	Total
	Black	White	Other	Total	Black	White	Other	Total	Black	White	Other	Total	Black	White	Other	Total			
6	1	4	0	5	0	8	1	9	22	60	11	93	28	51	16	95	14	188	202
7	1	2	1	4	5	3	1	9	24	64	13	101	23	67	16	106	13	207	220
8	0	3	1	4	0	6	1	7	30	70	9	109	21	69	11	101	11	210	221
<b>TOTAL</b>	<b>2</b>	<b>9</b>	<b>2</b>	<b>13</b>	<b>5</b>	<b>17</b>	<b>3</b>	<b>25</b>	<b>76</b>	<b>194</b>	<b>33</b>	<b>303</b>	<b>72</b>	<b>187</b>	<b>43</b>	<b>302</b>	<b>38</b>	<b>605</b>	<b>643</b>

**TOANO Middle School**

Grade	City of Williamsburg								James City County								Totals		
	Male				Female				Male				Female				City	County	Total
	Black	White	Other	Total	Black	White	Other	Total	Black	White	Other	Total	Black	White	Other	Total			
6	0	0	0	0	1	1	0	2	25	118	12	155	26	93	16	135	2	290	292
7	0	1	0	1	2	0	0	2	23	92	18	133	29	114	10	153	3	286	289
8	1	0	0	1	1	0	0	1	22	104	11	137	27	100	12	139	2	276	278
<b>TOTAL</b>	<b>1</b>	<b>1</b>	<b>0</b>	<b>2</b>	<b>4</b>	<b>1</b>	<b>0</b>	<b>5</b>	<b>70</b>	<b>314</b>	<b>41</b>	<b>425</b>	<b>82</b>	<b>307</b>	<b>38</b>	<b>427</b>	<b>7</b>	<b>852</b>	<b>859</b>

**JAMESTOWN High School**

Grade	City of Williamsburg								James City County								Totals		
	Male				Female				Male				Female				City	County	Total
	Black	White	Other	Total	Black	White	Other	Total	Black	White	Other	Total	Black	White	Other	Total			
9	0	1	0	1	0	2	0	2	30	117	25	172	12	128	13	153	3	325	328
10	0	0	0	0	0	0	0	0	18	117	22	157	32	108	15	155	0	312	312
11	0	0	0	0	0	0	0	0	14	131	11	156	21	116	15	152	0	308	308
12	0	2	0	2	0	0	0	0	8	112	13	133	17	114	18	149	2	282	284
<b>TOTAL</b>	0	3	0	3	0	2	0	2	70	477	71	618	82	466	61	609	5	1227	1232

**LAFAYETTE High School**

Grade	City of Williamsburg								James City County								Totals		
	Male				Female				Male				Female				City	County	Total
	Black	White	Other	Total	Black	White	Other	Total	Black	White	Other	Total	Black	White	Other	Total			
9	19	5	7	31	12	5	3	20	26	86	13	125	29	77	17	123	51	248	299
10	20	8	2	30	13	6	9	28	25	94	19	138	27	80	8	115	58	253	311
11	13	7	4	24	10	10	0	20	30	63	10	103	24	91	8	123	44	226	270
12	5	6	0	11	5	6	1	12	18	84	5	107	21	72	11	104	23	211	234
<b>TOTAL</b>	57	26	13	96	40	27	13	80	99	327	47	473	101	320	44	465	176	938	1114

**WARHILL High School**

Grade	City of Williamsburg								James City County								Totals		
	Male				Female				Male				Female				City	County	Total
	Black	White	Other	Total	Black	White	Other	Total	Black	White	Other	Total	Black	White	Other	Total			
9	1	6	3	10	3	3	1	7	29	109	12	150	33	104	9	146	17	296	313
10	4	9	0	13	3	7	1	11	36	113	14	163	25	94	11	130	24	293	317
11	1	3	2	6	0	1	2	3	27	89	16	132	29	93	7	129	9	261	270
12	1	4	2	7	0	4	1	5	31	76	9	116	25	72	7	104	12	220	232
<b>TOTAL</b>	7	22	7	36	6	15	5	26	123	387	51	561	112	363	34	509	62	1070	1132

**DIVISION LEVEL DEMOGRAPHICS  
WJCC SCHOOL DIVISION TOTALS**

Grade	City of Williamsburg								James City County								WJCC		
	Male				Female				Male				Female				Totals		
	Black	White	Other	Total	Black	White	Other	Total	Black	White	Other	Total	Black	White	Other	Total	City	County	Total
K	8	19	6	33	10	13	8	31	66	231	46	343	53	209	63	325	64	668	<b>732</b>
1	8	18	6	32	6	12	7	25	76	213	56	345	64	224	44	332	57	677	<b>734</b>
2	8	9	4	21	10	16	5	31	71	238	45	354	64	233	47	344	52	698	<b>750</b>
3	13	20	4	37	8	12	4	24	59	270	52	381	70	248	42	360	61	741	<b>802</b>
4	11	17	6	34	7	18	6	31	76	264	48	388	71	237	40	348	65	736	<b>801</b>
5	14	16	8	38	10	13	10	33	88	276	49	413	75	260	37	372	71	785	<b>856</b>
6	14	16	2	32	18	17	1	36	63	280	36	379	69	224	47	340	68	719	<b>787</b>
7	10	22	6	38	16	8	5	29	54	258	43	355	73	248	40	361	67	716	<b>783</b>
8	10	8	6	24	10	17	5	32	63	275	29	367	62	260	35	357	56	724	<b>780</b>
9	20	12	10	42	15	10	4	29	85	312	50	447	74	309	39	422	71	869	<b>940</b>
10	24	17	2	43	16	13	10	39	79	324	55	458	84	282	34	400	82	858	<b>940</b>
11	14	10	6	30	10	11	2	23	71	283	37	391	74	300	30	404	53	795	<b>848</b>
12	6	12	2	20	5	10	2	17	57	272	27	356	63	258	36	357	37	713	<b>750</b>
<b>Totals</b>	<b>160</b>	<b>196</b>	<b>68</b>	<b>424</b>	<b>141</b>	<b>170</b>	<b>69</b>	<b>380</b>	<b>908</b>	<b>3496</b>	<b>573</b>	<b>4977</b>	<b>896</b>	<b>3292</b>	<b>534</b>	<b>4722</b>	<b>804</b>	<b>9699</b>	<b>10503</b>