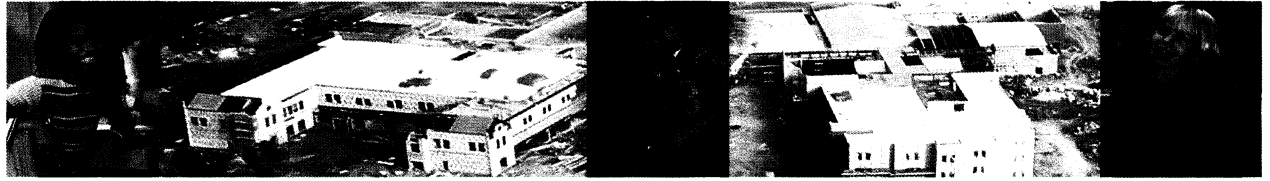




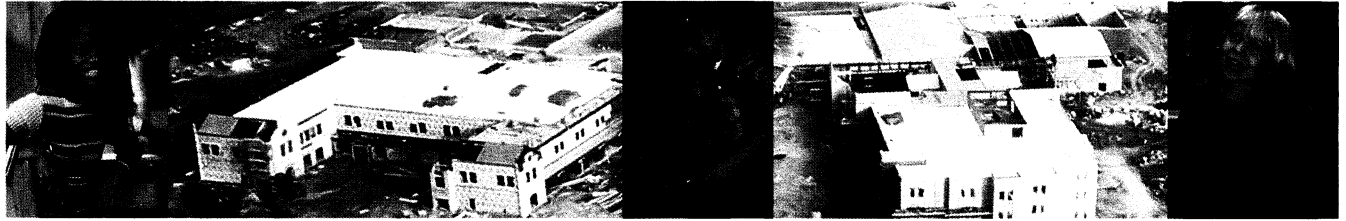
**WILLIAMSBURG-
JAMES CITY COUNTY
PUBLIC SCHOOLS
FY 2010-2011**



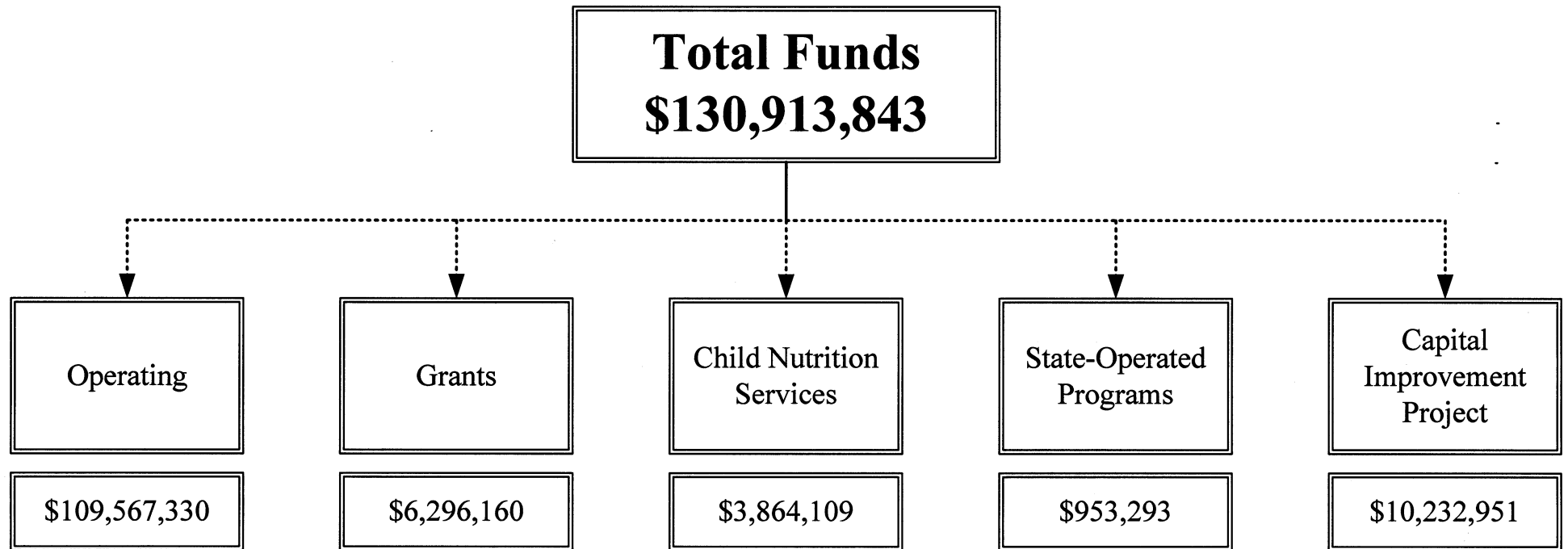
FINANCIAL SUMMARIES
All Funds



**WILLIAMSBURG-
JAMES CITY COUNTY
PUBLIC SCHOOLS
FY 2010-2011**

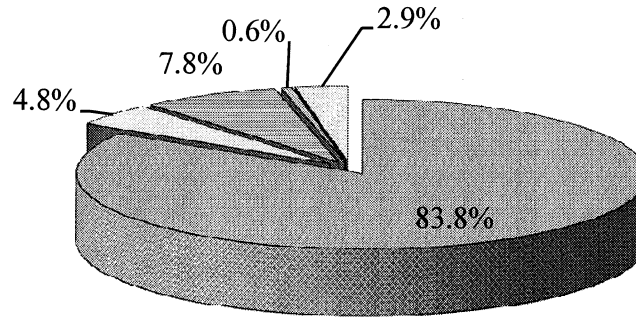


**WILLIAMSBURG-JAMES CITY COUNTY PUBLIC SCHOOLS
SUMMARY of FUNDS
Fiscal Year 2010-2011**





FY2010 - 2011 SUMMARY OF FUNDS



■ Operating
■ Grants
■ Capital Improvements
■ State Operated
■ Child Nutrition Services

Fund	FY2007 Actual	FY2008 Actual	FY2009 Actual	FY2010 Budget	FY2011 Budget	\$ Variance	% change over 2010	% of Budget
Operating	\$ 96,685,172	\$ 109,817,459	\$ 112,265,294	\$ 113,933,710	\$ 109,567,330	\$ (4,366,380)	-3.8%	83.7%
Grants	4,268,296	4,428,391	4,916,101	6,516,099	6,296,160	(219,939)	-3.4%	4.8%
Capital Improvements (CIP Fund)	50,920,631	19,620,229	19,922,523	6,622,011	10,232,951	3,610,940	54.5%	7.8%
State Operated (Eastern State/Merrimac Center)	841,011	817,078	838,405	845,304	953,293	107,989	12.8%	0.7%
Child Nutrition Services	3,230,174	3,707,400	3,777,811	3,838,216	3,864,109	25,893	0.7%	3.0%
Grand Total	\$ 155,945,284	\$ 138,390,557	\$ 141,720,134	\$ 131,755,340	\$ 130,913,843	\$ (841,497)	-0.6%	100.0%

* Percentage total may not equal 100% due



**Williamsburg - James City County Public Schools
FY 2010-2011 Summary by State Object - All Funds**

Object	Description	Operating	Grants	Child	State	CIP	Total
				Nutrition	Operated		
1110	Administrative Salary & Wages	\$ 1,229,442	\$ -	\$ 84,825	\$ 85,489	\$ -	\$ 1,399,756
1112	Superintendent Salaries & Wages	187,762	-	-	-	-	187,762
1120	Instructional Salaries & Wages	42,744,648	2,276,727	-	475,051	-	45,496,426
1122	Librarian Salaries & Wages	1,062,990	-	-	-	-	1,062,990
1123	Counselor Salaries & Wages	1,752,422	-	-	-	-	1,752,422
1124	Supervisor Salaries & Wages	490,668	-	-	-	-	490,668
1126	Principal Salaries & Wages	1,378,816	-	-	-	-	1,378,816
1127	Asst Principal Salary & Wages	1,212,422	-	-	-	-	1,212,422
1130	Other Prof. Salaries & Wages	1,789,975	573,544	46,405	50,139	-	2,460,063
1131	School Nurse Salaries & Wages	698,549	35,738	-	-	-	734,287
1132	Psychologist Salaries & Wages	301,488	-	-	-	-	301,488
1140	Technical Salaries & Wages	1,435,919	45,363	-	-	-	1,481,282
1141	Tech Support Salaries & Wages	369,610	-	-	-	-	369,610
1142	Security Guard Salaries & Wages	369,221	-	-	-	-	369,221
1150	Clerical Salaries & Wages	3,233,888	50,327	35,034	29,118	-	3,348,367
1151	Instr Aides Salaries & Wages	3,826,975	255,941	-	-	-	4,082,916
1160	Trades Salaries & Wages	1,172,648	-	-	-	-	1,172,648
1170	Bus Driver Salaries & Wages	1,967,394	-	-	-	-	1,967,394
1175	Bus Aids Salaries & Wages	407,293	-	-	-	-	407,293
1180	Laborer Salaries & Wages	18,000	-	-	-	-	18,000
1190	Service Salaries & Wages	2,135,510	-	1,100,031	-	-	3,235,541
1520	Substitute Salaries & Wages	1,015,005	30,522	-	6,000	-	1,051,527
1620	Supplemental Salaries & Wages	367,367	251,747	-	-	-	619,114
1700	Stipends	1,013,704	-	-	-	-	1,013,704
1000's	Personnel Services (Wages) Total	70,181,716	3,519,909	1,266,295	645,797	-	75,613,717
2100	FICA Benefits	5,368,901	267,306	96,872	49,403	-	5,782,482
2210	VRS Benefits	7,894,304	450,094	83,971	99,105	-	8,527,474
2300	HMP Benefits	10,835,963	416,108	273,767	64,601	-	11,590,439
2400	Group Life Insurance	676,286	29,262	5,529	6,526	-	717,603
2500	Disability Insurance	4,500	-	-	-	-	4,500
2600	Unemployment Insurance	96,750	-	-	-	-	96,750
2700	Worker's Compensation	433,357	-	-	-	-	433,357
2750	Retiree Health Care Credit	184,933	30,281	5,475	6,461	-	227,150
2800	Other Benefits	75,000	-	-	-	-	75,000
2000's	Fringe Benefits Total	25,569,994	1,193,051	465,614	226,096	-	27,454,755
1/2000's	Wages & Fringe Benefits Total	95,751,710	4,712,960	1,731,909	871,893	-	103,068,472
3000	Purchased Services	2,587,958	761,991	31,500	11,700	-	3,393,149
3810	Tuition Paid-Oth Div In-State	19,632	-	-	-	-	19,632
3830	Tuition Paid-Private Schools	161,600	-	-	-	-	161,600
3000's	Purchased Services Total	2,769,190	761,991	31,500	11,700	-	3,574,381



**Williamsburg - James City County Public Schools
FY 2010-2011 Summary by State Object - All Funds**

Object	Description	Operating	Grants	Child Nutrition	State Operated	CIP	Total
4000	Internal Services	-	10,000	-	-	-	10,000
4000's	Internal Services Total	-	10,000	-	-	-	10,000
5001	Telecommunications	503,653	-	-	-	-	503,653
5101	Electricity	2,252,996	-	-	-	-	2,252,996
5102	Heating Fuel	593,986	-	-	-	-	593,986
5103	Water/Sewer Services	192,670	-	-	-	-	192,670
5104	Refuse Removal	89,500	-	-	-	-	89,500
5200	Communications	113,304	-	-	-	-	113,304
5300	Insurance	677,500	-	-	-	-	677,500
5400	Leases and Rentals	401,272	-	-	-	-	401,272
5500	Travel	149,890	49,313	10,500	12,000	-	221,703
5800	Miscellaneous	82,488	56,500	2,700	500	-	142,188
5801	Dues & Memberships	101,208	-	-	-	-	101,208
5804	Graduation Expenditures	44,000	-	-	-	-	44,000
5805	Staff Development	34,700	78,944	-	-	-	113,644
5806	Testing Services	147,453	-	-	-	-	147,453
5000's	Other Charges Total	5,384,620	184,757	13,200	12,500	-	5,595,077
6000	Materials and Supplies	1,396,401	15,500	112,500	700	-	1,525,101
6002	Food Supplies	-	-	1,975,000	-	-	1,975,000
6008	Vehicle/Powered Equip Fuels	1,193,625	-	-	-	-	1,193,625
6009	Vehicle/Powered Equip Supplies	338,000	-	-	-	-	338,000
6020	Textbooks and Workbooks	391,024	-	-	3,500	-	394,524
6030	Instructional Materials	981,548	385,938	-	13,000	-	1,380,486
6040	Tech-Software/On line Content	97,250	16,500	-	-	-	113,750
6050	Non-Capitalized Tech Hardware	1,200	8,627	-	-	-	9,827
6000's	Materials and Supplies Total	4,399,048	426,565	2,087,500	17,200	-	6,930,313
7000's	Tuition Payments to Joint Ops	1,164,078	100,687	-	-	-	1,264,765
8100	Capital Outlay Replacement	62,580	-	-	-	5,528,271	5,590,851
8110	Technology-Hardware Replace	14,800	-	-	-	-	14,800
8200	Capital Outlay Additions	4,500	42,000	-	-	4,704,680	4,751,180
8210	Technology-Hardware Additions	16,804	57,200	-	40,000	-	114,004
8000's	Capital/Equip. Outlay Total	98,684	99,200	-	40,000	10,232,951	10,470,835
9000's	Other Uses of Funds	-	-	-	-	-	-
GRAND TOTAL		\$ 109,567,330	\$ 6,296,160	\$ 3,864,109	\$ 953,293	\$ 10,232,951	\$ 130,913,843



Williamsburg - James City County Public Schools
FTEs by State Object - All Funds
FY2010 - 2011

Object Code	Description	Operating	Grants	Child Nutrition	State Operated	CIP	Total FTEs
51110000	Salary - Administrative	13.00	-	1.00	1.00	-	15.00
51112000	Salary - Superintendent	1.00	-	-	-	-	1.00
51120000	Salary - Teacher	814.00	38.25	-	7.50	-	859.75
51122000	Salary - Librarian	18.00	-	-	-	-	18.00
51123000	Salary - Guidance Counselor	29.00	-	-	-	-	29.00
51124000	Salary - Supervisor	6.00	-	-	-	-	6.00
51126000	Salary - Principal	16.00	-	-	-	-	16.00
51127000	Salary - Assistant Principal	18.00	-	-	-	-	18.00
51130000	Salary - Other Professional	-	11.57	1.00	1.00	-	13.57
51131000	Salary - School Nurse	15.27	0.73	-	-	-	16.00
51132000	Salary - Psychologist	6.00	-	-	-	-	6.00
51133000	Salary - Caseworker	-	0.43	-	-	-	0.43
51134000	Salary - Social Worker	6.00	-	-	-	-	6.00
51139000	Salary - Therapist	25.00	1.60	-	-	-	26.60
51140000	Salary - Technical	12.00	1.00	-	-	-	13.00
51141000	Salary - Technical Support	10.00	-	-	-	-	10.00
51142000	Salary - Security Guard	9.00	-	-	-	-	9.00
51143000	Salary - Other Technical	14.00	-	-	-	-	14.00
51150000	Salary - Clerical	98.50	1.12	1.00	1.00	-	101.62
51151000	Salary - Teacher Assistant	212.21	14.65	-	-	-	226.86
51160000	Salary - Trades	14.00	-	-	-	-	14.00
51165000	Salary - Mechanic	7.00	-	-	-	-	7.00
51166000	Salary - Grounds worker	6.00	-	-	-	-	6.00
51170000	Salary - Bus Driver	99.60	-	-	-	-	99.60
51175000	Salary - Transit Aide	29.00	-	-	-	-	29.00
51191000	Salary - Custodian	79.75	-	-	-	-	79.75
51193000	Salary - Cafeteria Worker	-	-	44.44	-	-	44.44
51194000	Salary - Cafeteria Manager	-	-	15.00	-	-	15.00
Grand Total		1,558.33	69.35	62.44	10.50	-	1,700.62



Fund Balance (undesignated)

Please note that as a dependent school division we are only allowed to carry a relatively small operating fund balance as approved by the City/County. Child Nutrition Services as an enterprise fund may carry a fund balance to cover future liabilities.

Fund	FY 2006 Actual Undesignated Fund Balance	FY2007 Actual Undesignated Fund Balance	FY 2008 Actual Undesignated Fund Balance	FY2009 Actual Undesignated Fund Balance	Future Projected Undesignated Fund Balance
Operating	\$ 271,035	\$ 237,402	\$ 500,000	\$ 400,000	\$ 500,000
Grants	-	-	-	-	-
Capital Improvements (CIP Fund)	-	-	-	-	-
State Operated (Eastern State/Merrimac Center)	-	-	-	-	-
Child Nutrition Services	434,731	505,835	334,944	132,180	150,000
Grand Total	\$ 705,766	\$ 743,237	\$ 834,944	\$ 532,180	\$ 650,000



**WILLIAMSBURG-
JAMES CITY COUNTY
PUBLIC SCHOOLS
FY 2010-2011**



This page intentionally left blank



**WILLIAMSBURG-
JAMES CITY COUNTY
PUBLIC SCHOOLS
FY 2010-2011**



FINANCIAL SUMMARIES
Operating Budget



**WILLIAMSBURG-
JAMES CITY COUNTY
PUBLIC SCHOOLS
FY 2010-2011**



This page intentionally left blank