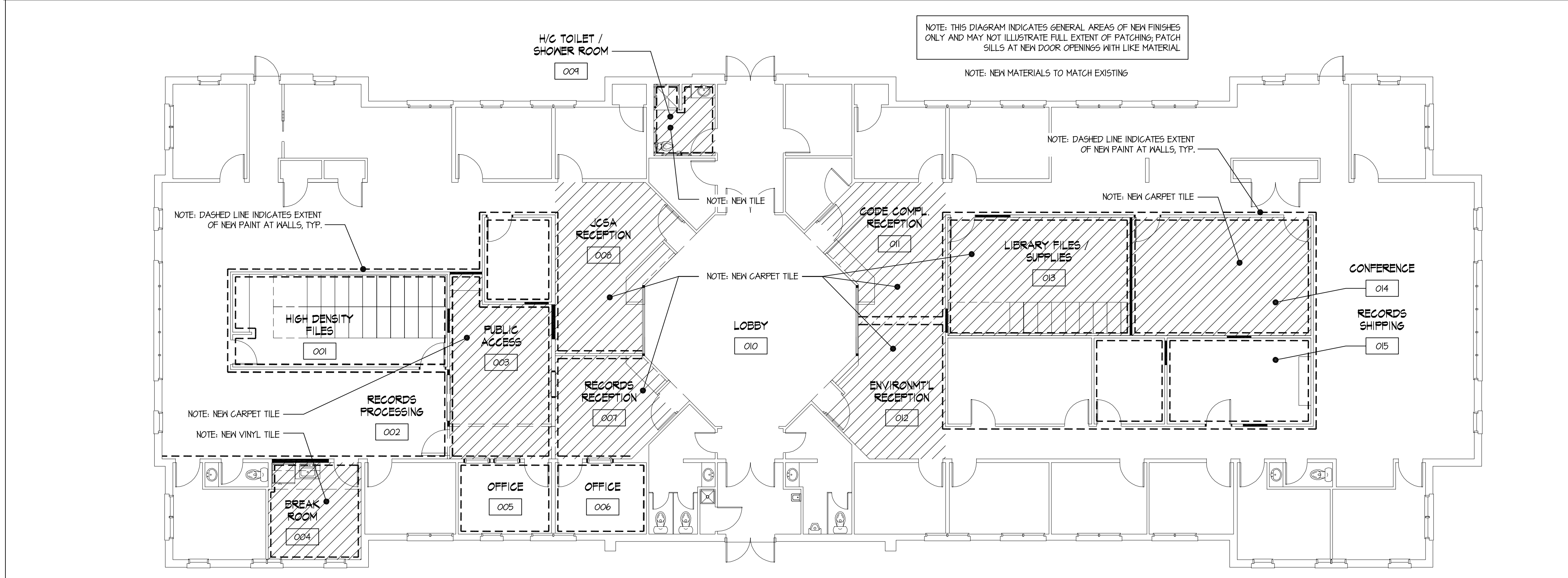


File: I:\PROJECTS\2011_PROJECTS\31011\WORKBOOKS\31011_A0-1.DWG
SAVED: 10/4/2011 6:31:11 PM PLOTTED: 10/6/2011 11:56:05 AM



6-3 FINISH DIAGRAM
AO.1

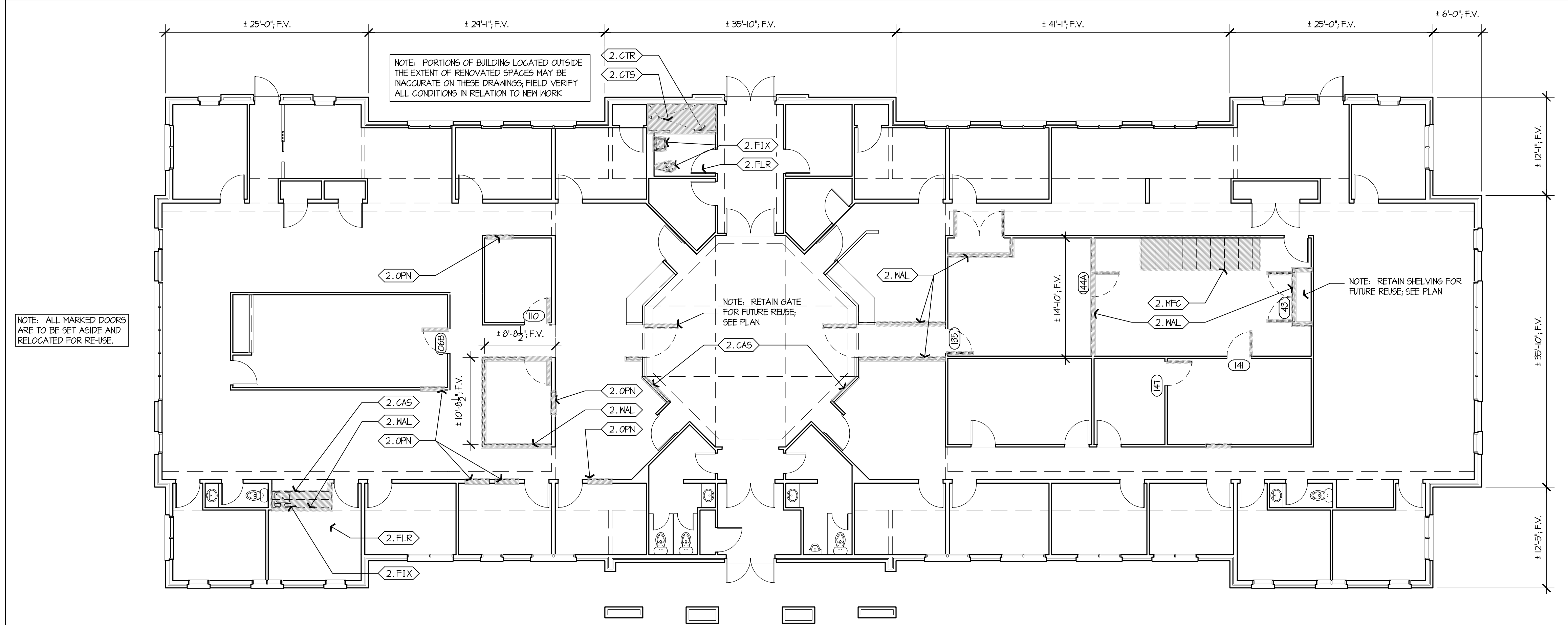
SCALE: 1/8" = 1'-0"

MATERIALS KEYING: AO.1 DEMOLITION PLAN
DIVISION 2: SITE AND DEMOLITION

- 2.CAS REMOVE EXISTING CASEWORK AND ASSOCIATED MATERIALS TO EXTENT REQ'D FOR INSTALLATION OF NEW WORK
- 2.CTR REMOVE COUNTERTOP AND ASSOCIATED MATERIALS TO EXTENT REQ'D FOR INSTALLATION OF NEW WORK
- 2.CTS REMOVE CERAMIC TILE SHOWER, CURB, AND ASSOCIATED MATERIALS TO EXTENT REQ'D FOR INSTALLATION OF NEW WORK; DEMO TO LEVEL OF DEPRESSIONED SLAB FOR NEW ADA COMPLIANT SHOWER INSERT
- 2.FIX REMOVE PLUMBING FIXTURE AND ASSOCIATED MATERIALS TO EXTENT REQ'D FOR INSTALLATION OF NEW WORK
- 2.FLR REMOVE EXISTING FLOOR FINISH AND ASSOCIATED MATERIALS TO EXTENT REQ'D FOR INSTALLATION OF NEW WORK
- 2.MFC REMOVE MOVEABLE FILE CABINET SYSTEM, SET ASIDE FOR RELOCATION AND LATER USE
- 2.OPN REMOVE OPENINGS AND ASSOCIATED MATERIALS TO EXTENT REQ'D FOR INSTALLATION OF NEW WORK
- 2.WAL REMOVE WALL AND ASSOCIATED MATERIALS TO EXTENT REQ'D FOR INSTALLATION OF NEW WORK

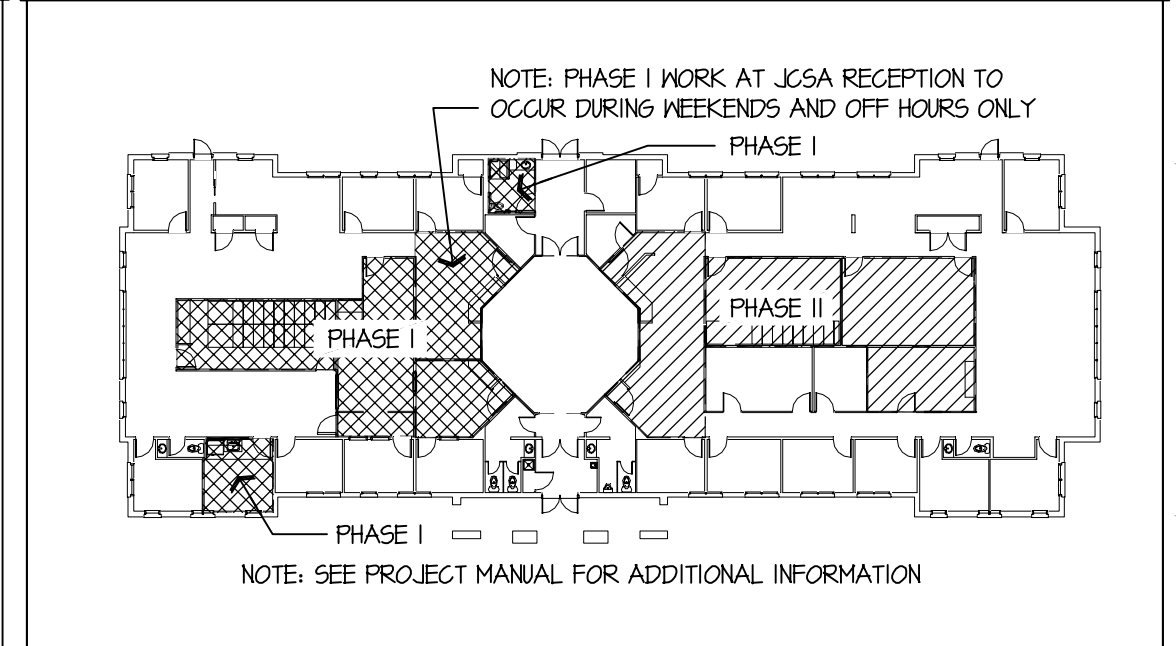
CODE DATA:
CODE: 2004 IEBC AS ADOPTED BY THE 2004 VAUSBC
USE GROUP: NO CHANGE (B) - BUSINESS
CONSTRUCTION TYPE: NO CHANGE (V-B)

NOTE: SEE PLUMBING DEMO PLAN FOR ADDITIONAL EXTENT OF SLAB DEMOLITION REQUIRED FOR DEMO & REMOVAL OF EXIST. D/W/V PIPING



A-3 DEMOLITION PLAN
AO.1

SCALE: 1/8" = 1'-0"



E-15 PHASING DIAGRAM
AO.1

SCALE: 1/32" = 1'-0"

BID SET	09/28/2011
No. Drawing Edition / Revision	Date
Project Info: RENOVATIONS TO BUILDING D & E AT THE JAMES CITY COUNTY GOVERNMENT COMPLEX 101-E MOUNTS BAY ROAD .. WILLIAMSBURG VA .. 23188 VOLUME II	
DEMO PLAN	
(DRAWN) REVIEWED: (jeh) JAH	

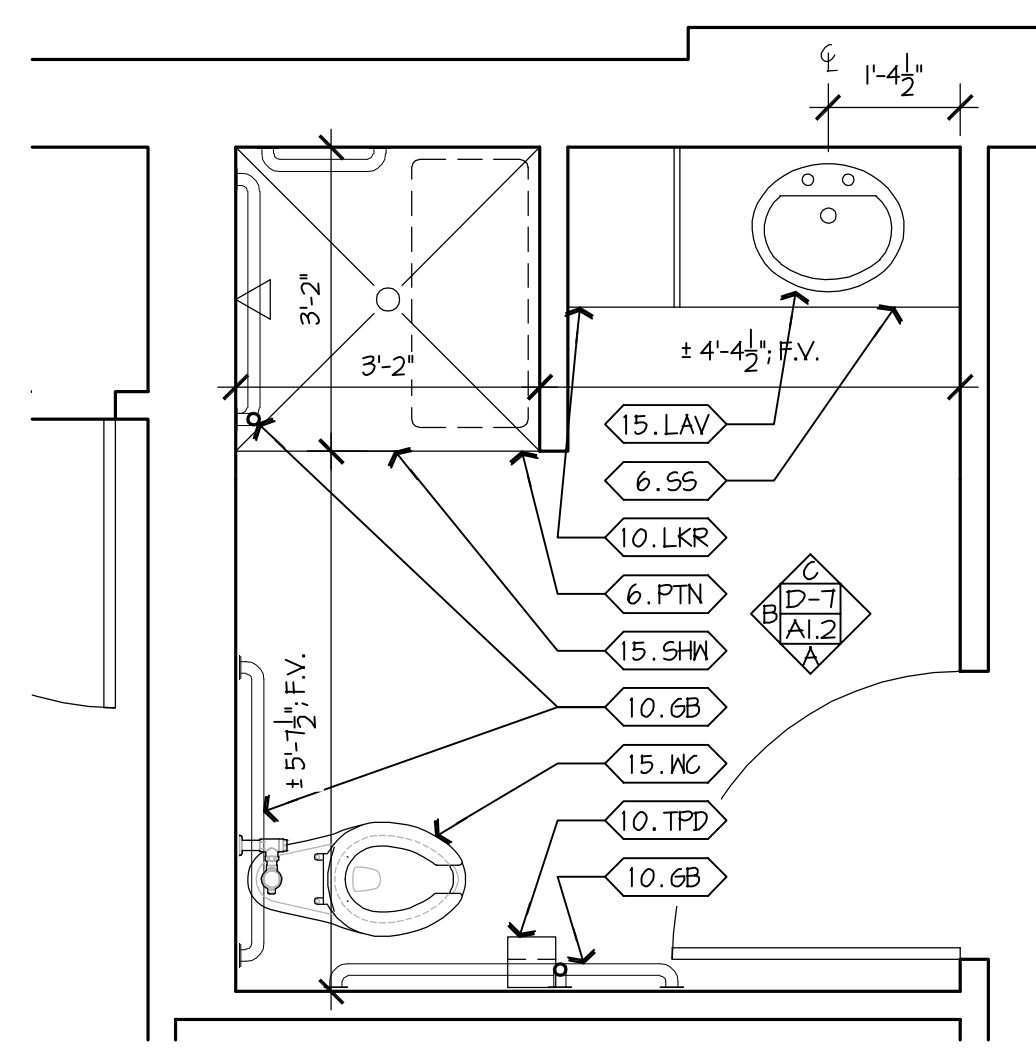
HOPKE & ASSOCIATES INC.
ARCHITECTURE ■ PLANNING ■ INTERIORS

1156 Jamestown Road, Suite C
Williamsburg, VA 23185
757.229.1100 Telephone
757.229.0869 Facsimile
www.hopke.com

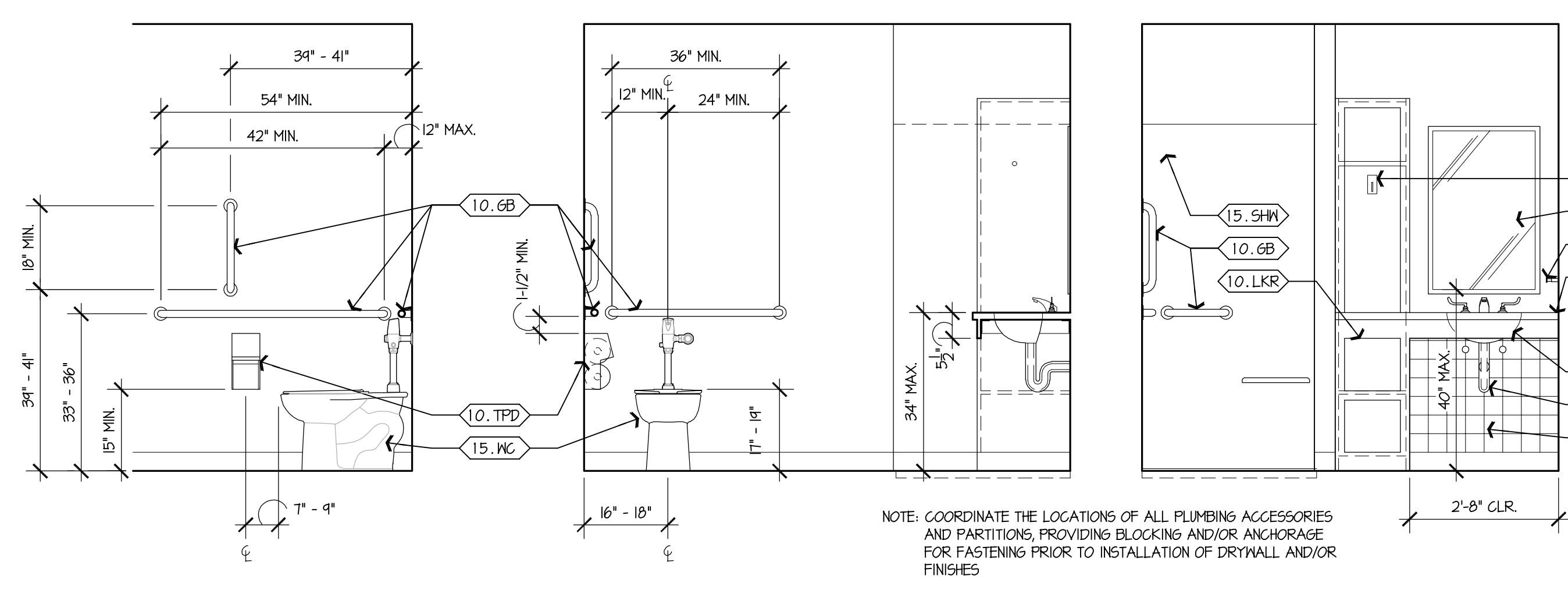
Project No. 31011
Sheet
AO.1
1 of 3



File: I:\PROJECTS\2011_PROJECTS\31011\WORKBOOKS\31011_A1-2.DWG

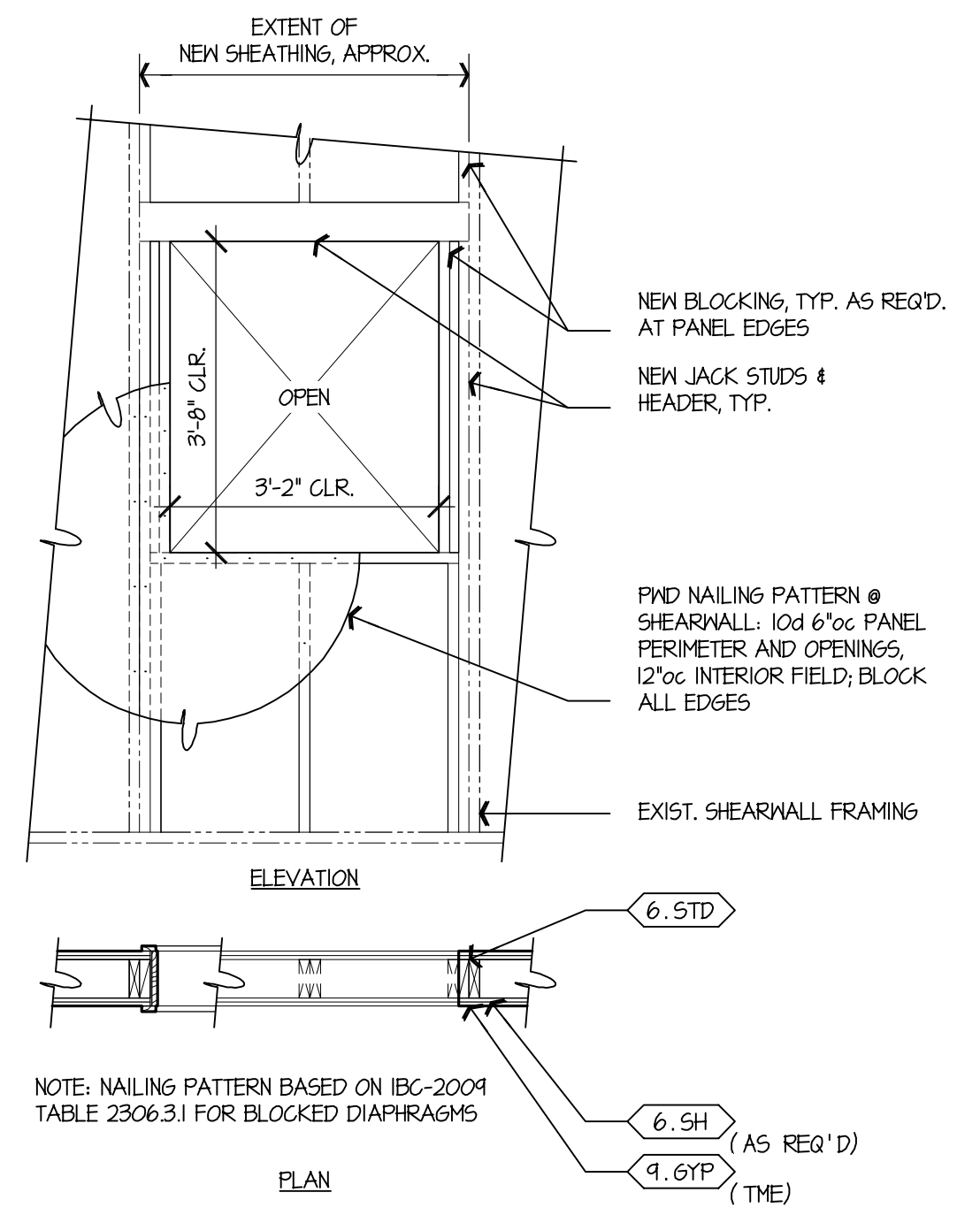


1-4 ENLARGED SHOWER RM PLAN
A1.2 SCALE: 1/2" = 1'-0"

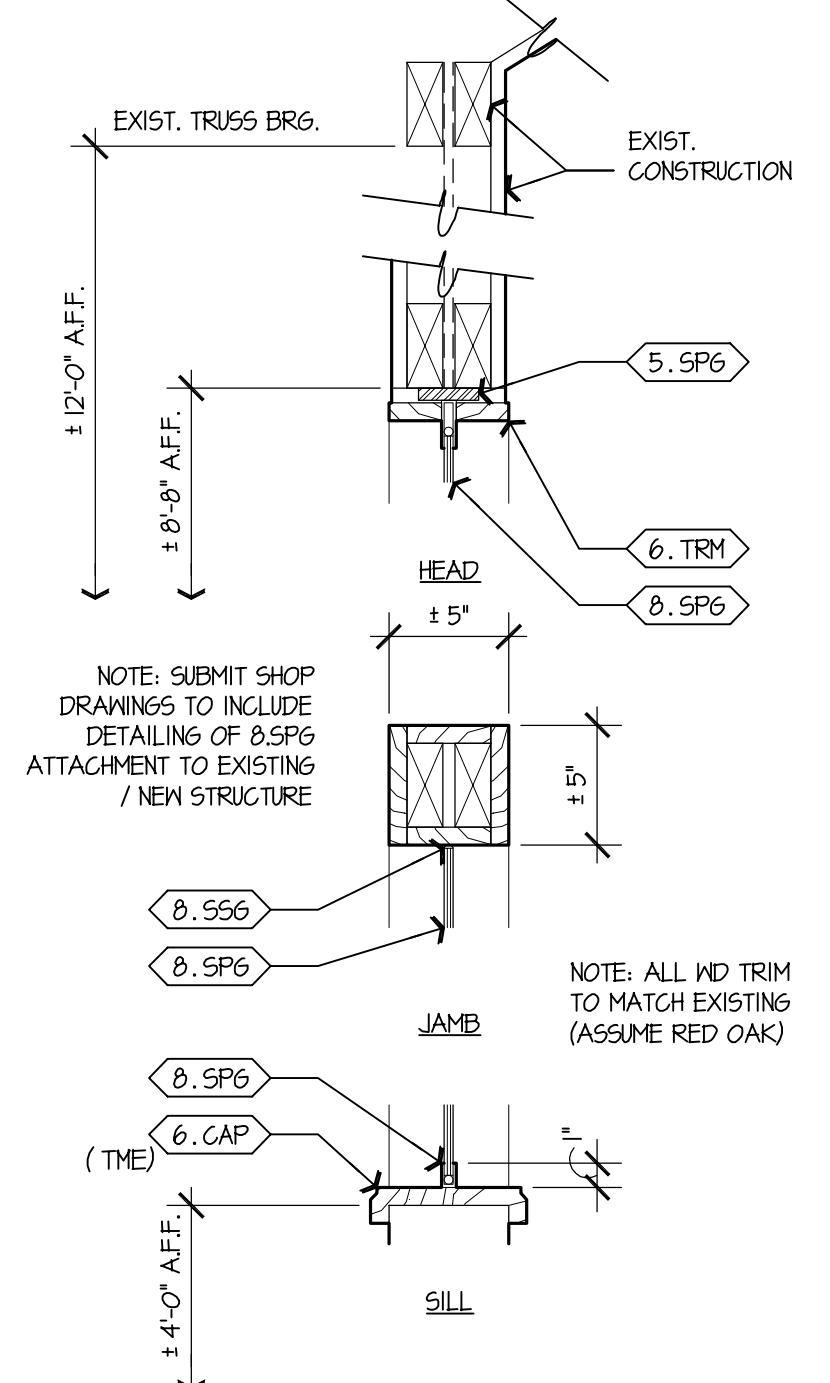


1-7 ENLARGED SHOWER RM ELEV.
A1.2 SCALE: 1/2" = 1'-0"

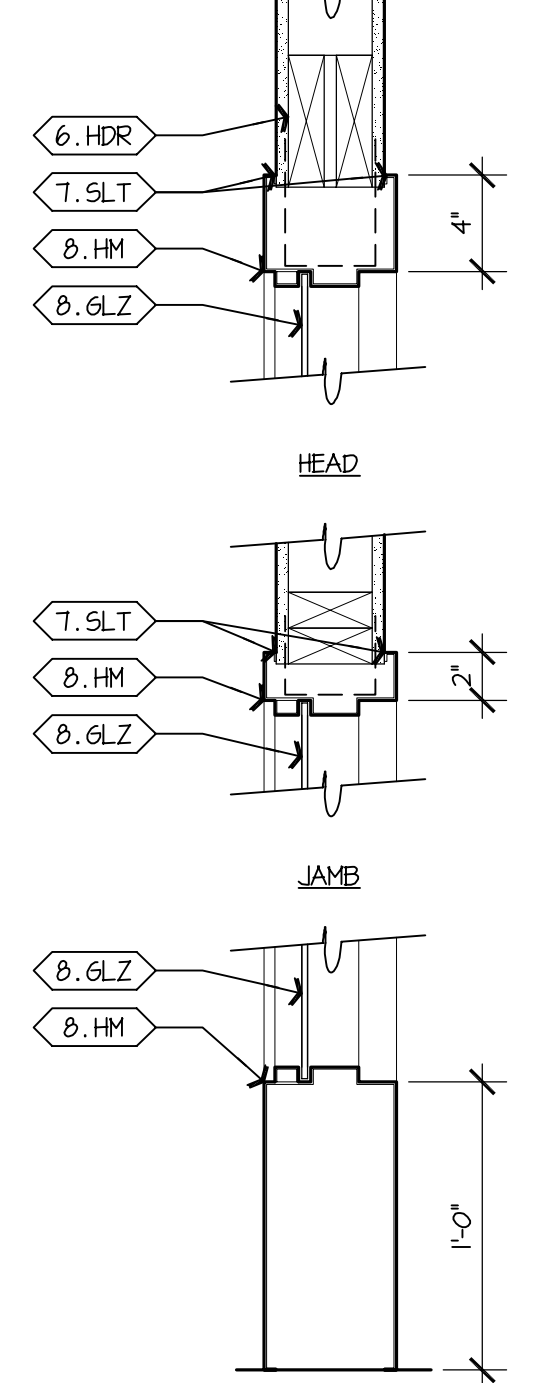
- MATERIALS KEYING: A1.2 INTERIOR ELEVATIONS, DETAILS
- DIVISION 5: METALS
- 5.SPG 2-1/2" x 1/2" THK STL. BAR STOCK CON'T AT 8.SPG HEAD; WELD TOP RECEPTOR TO BAR; SECURE TO JOISTS & BLOCKING ABOVE
- DIVISION 6: WOOD AND PLASTIC
- 6.CAP WOOD WALL CAP; TO MATCH EXISTING
 - 6.CTR PLASTIC-LAMINATE COUNTER AND TOP
 - 6.HDR 2X HEADER WITH 1/2" PLYWOOD SPACER(S) - SEE DETAILS FOR SIZE AND NUMBER
 - 6.PTN PARTITION - 1/2" GYPSUM DRYWALL BOARD SHEATHING OVER 2x4 MD STUDS @ 16" O.C.; EXTEND TO FULL HEIGHT UNLESS NOTED OTHERWISE
 - 6.SH SHEATHING: ROOF SHEATHING -- 1/2" CDX PLYWOOD; WALL SHEATHING -- 1/2" FIBERBOARD, 1/2" PLYWOOD @ CORNERS AND OPENING
 - 6.SS SOLID SURFACE COUNTERTOP - SEE SPEC'S
 - 6.STD WOOD STUD WALLS: 2x4's @ 16" O.C. W/2x BLOCKING @ MID HEIGHT AND DOUBLE TOP PLATES OVERLAPPING AT CORNERS
 - 6.TRM EXTERIOR TRIM (SIZE INDICATED); SEE SPEC'S
 - 6.WAL PARTIAL WALL, 42" AFF U.N.O.; WOOD CAP W/ 1/2" REVEAL, SPECIES TO MATCH MOULDING; SEE 6.STD
- DIVISION 7: THERMAL AND MOISTURE PROTECTION
- 7.SLT SEALANT - SEE SPECIFICATIONS
- DIVISION 8: DOORS AND WINDOWS
- 8.GLZ GLAZING - 1/4" TEMPERED GLASS
 - 8.HM HOLLOW METAL FRAME - SEE DOOR SCHEDULE/DETAILS
 - 8.SPG SPECIAL GLAZING SYSTEM, SEE SPECIFICATIONS
 - 8.SSB SILICONE GLAZING SEALANT
- DIVISION 9: FINISHES
- 9.GT CERAMIC TILE SYSTEM, INCLUDING MFR'S RECOMMENDED UNDERLAYMENT
 - 9.GYP GYPSUM BOARD (PAINTED); 1/2" THK. OVER 16" O.C. FRAMING, 5/8" OVER 24" O.C. FRAMING
- DIVISION 10: SPECIALTIES
- 10.GB ADA-COMPLIANT GRAB BAR
 - 10.LKR LOCKER / CUBBY STORAGE, SHOWN DIAGMATICALLY; SUBMIT SHOP DRAWINGS; SEE 6.SS
 - 10.MIR MIRROR
 - 10.R4H ROD AND HOOK
 - 10.SOP ADA-COMPLIANT PLUMBING WRAP
 - 10.TPD ADA COMPLIANT TOILET PAPER DISPENSER
- DIVISION 15: MECHANICAL
- 15.LAV LAVATORY
 - 15.SHM ADA COMPLIANT SHOWER
 - 15.WC WATER CLOSET



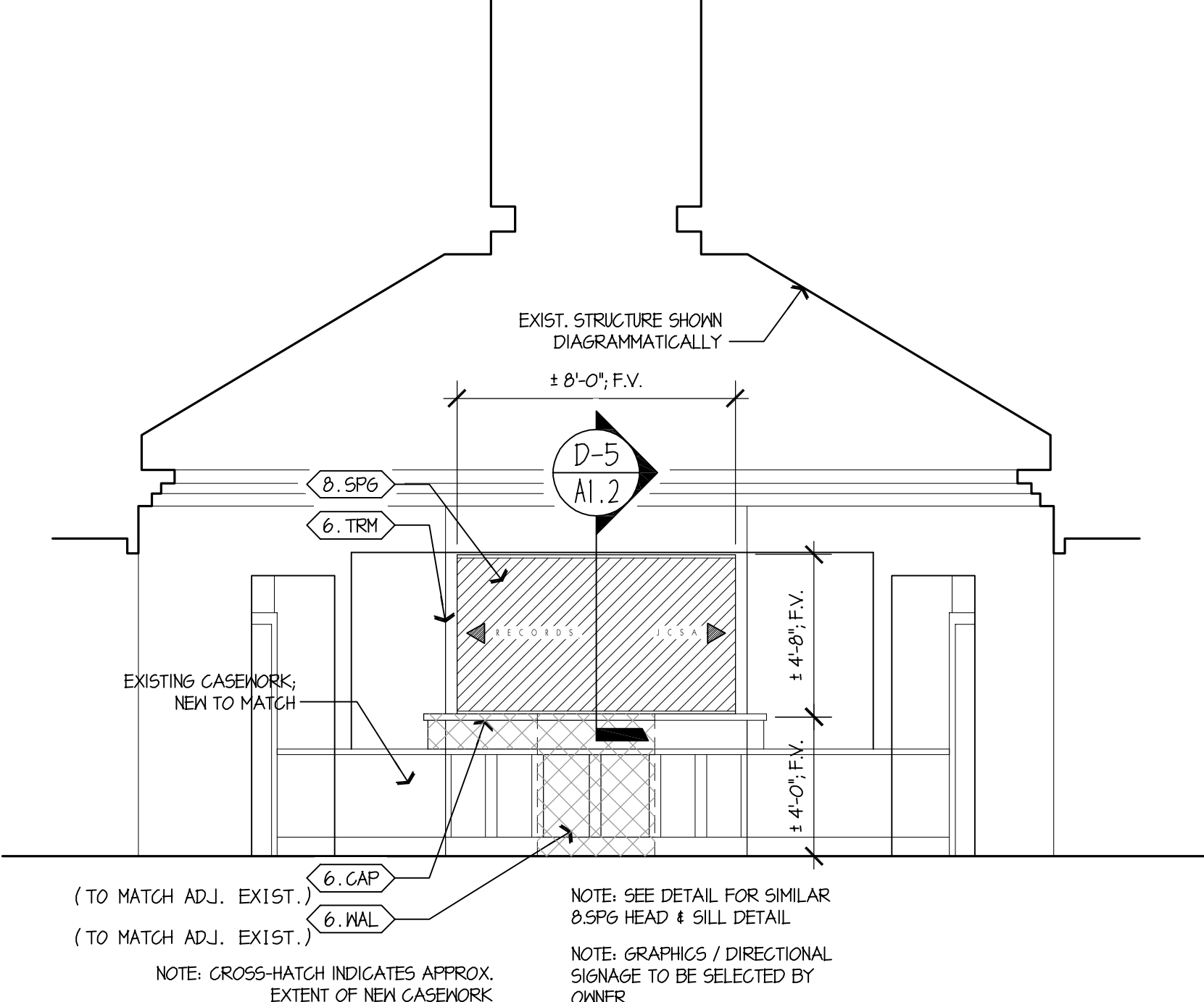
D-1 SHEARWALL OPENING DTL.
A1.2 SCALE: 1/2" = 1'-0"



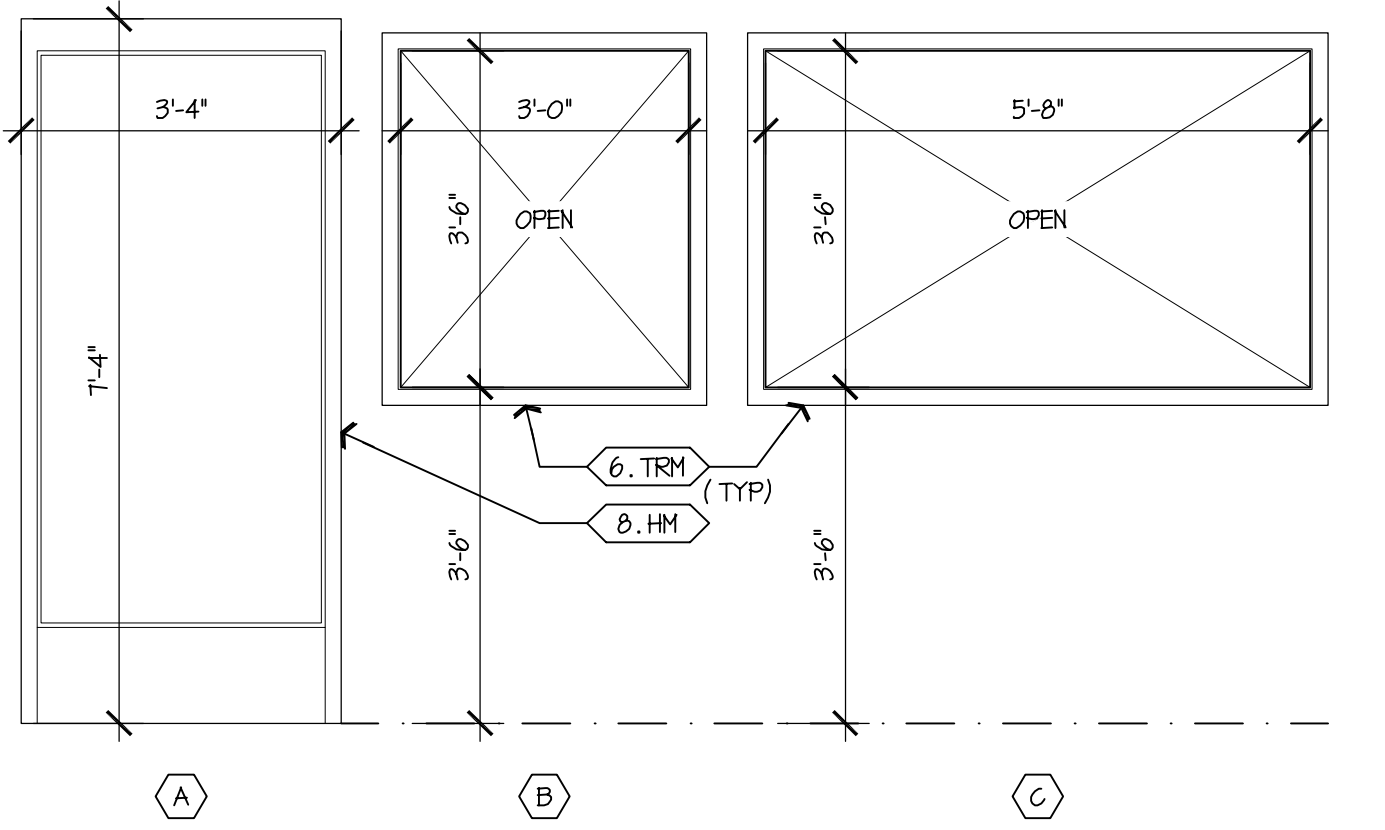
D-5 GLAZING DTLS.
A1.2 SCALE: 1 1/2" = 1'-0"



D-7 WINDOW TYPE A DTL
A1.2 SCALE: 1 1/2" = 1'-0"



D-10 LOBBY GLASS PTN.
A1.2 SCALE: 1/4" = 1'-0"



A-10 WINDOW ELEVATIONS
A1.2 SCALE: 1/2" = 1'-0"

BID SET	09/28/2011
No. Drawing Edition / Revision	Date
Project Info: RENOVATIONS TO BUILDING D & E AT THE JAMES CITY COUNTY GOVERNMENT COMPLEX 101-E MOUNTS BAY ROAD .. WILLIAMSBURG VA .. 23188 VOLUME II	
INTERIOR ELEVATIONS, DETAILS (DRAWN) REVIEWED: (jeh) JAH	

HOPKE & ASSOCIATES INC.
ARCHITECTURE ■ PLANNING ■ INTERIORS

1156 Jamestown Road, Suite C
Williamsburg, VA 23185
757.229.1100 Telephone
757.229.0869 Facsimile
www.hopke.com

Project No. 31011



Sheet
A1.2
3 of 3

SAVED: 10/5/2011 12:28:06 PM PLOTTED: 10/6/2011 11:55:23 AM