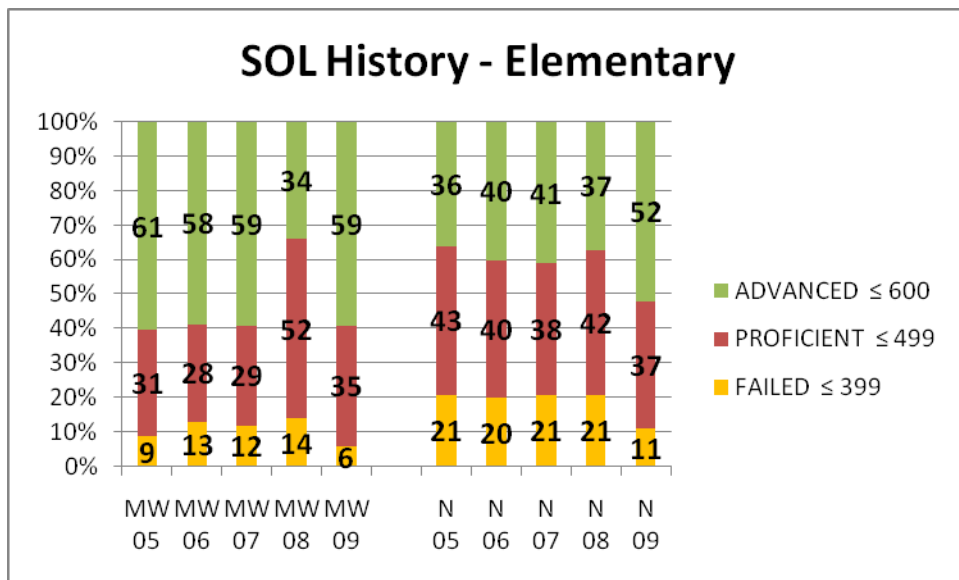
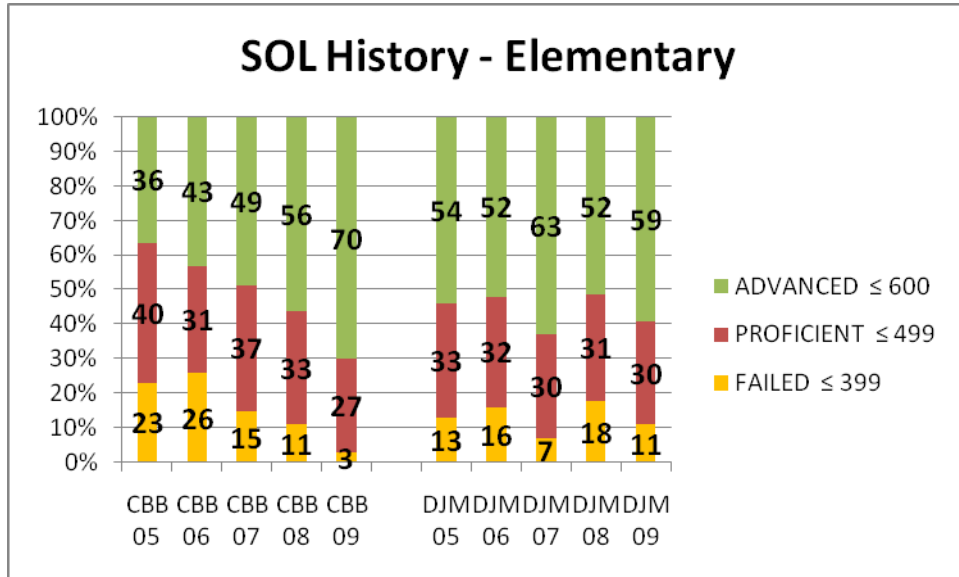
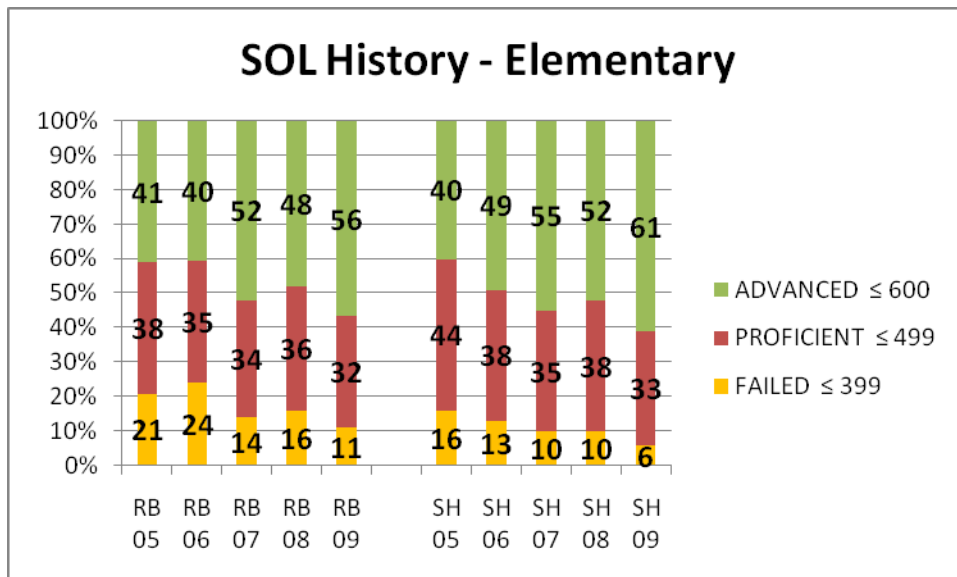
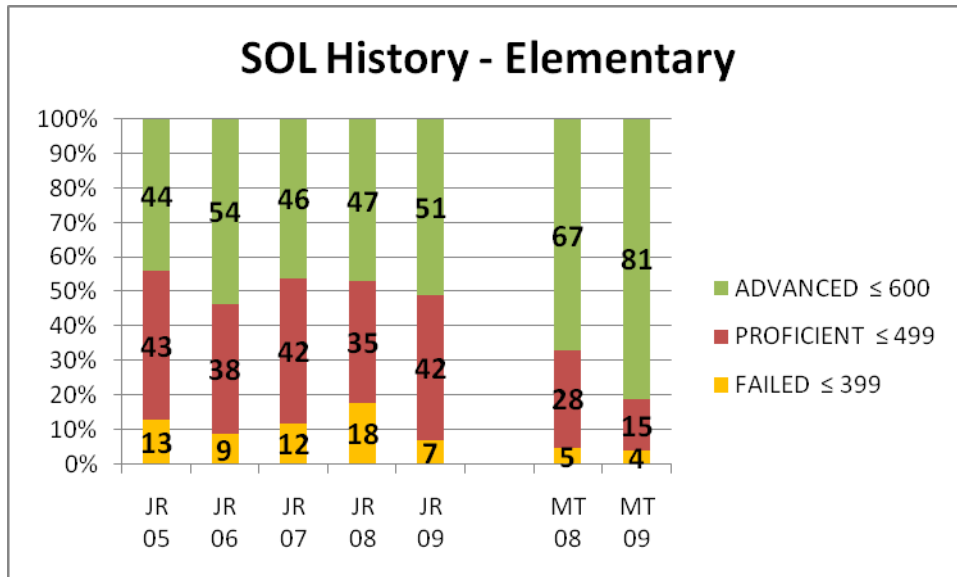


SOL Five Year Performance Trends – Elementary History



SOL Five Year Performance Trends – Elementary History

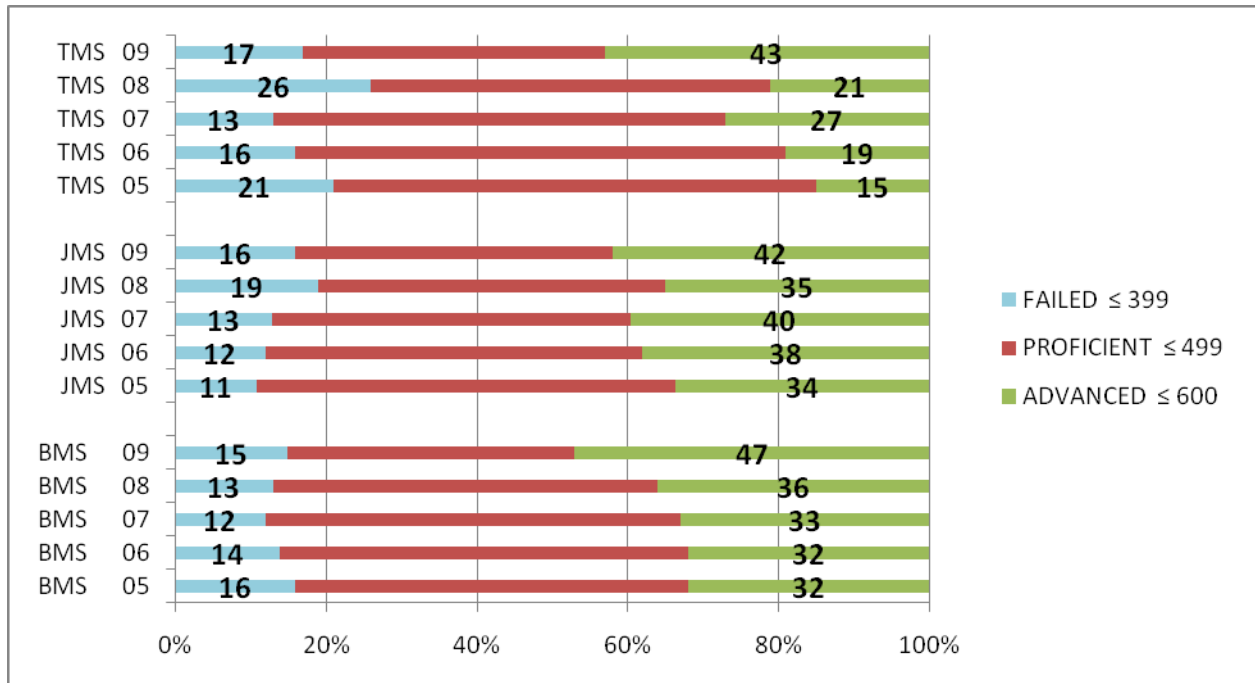


Elementary History

Advance rates increased from Spring 05 to Spring 09 in six schools (CBB +34, DJM +4, N+16, JR+3, RB+15, SH+21) and MT's advance rate increased from 08 to 09 by 14 percentage points.

Failure rates were reduced from Spring 05 to Spring 09 in seven schools (CBB-20, DJM-2, MW-3, N-10, JR-6, RB-10, SH-10) and MT's failure rate from 08 to 09 was reduced by 13 percentage points.

SOL Five Year Performance Trends – Middle School History

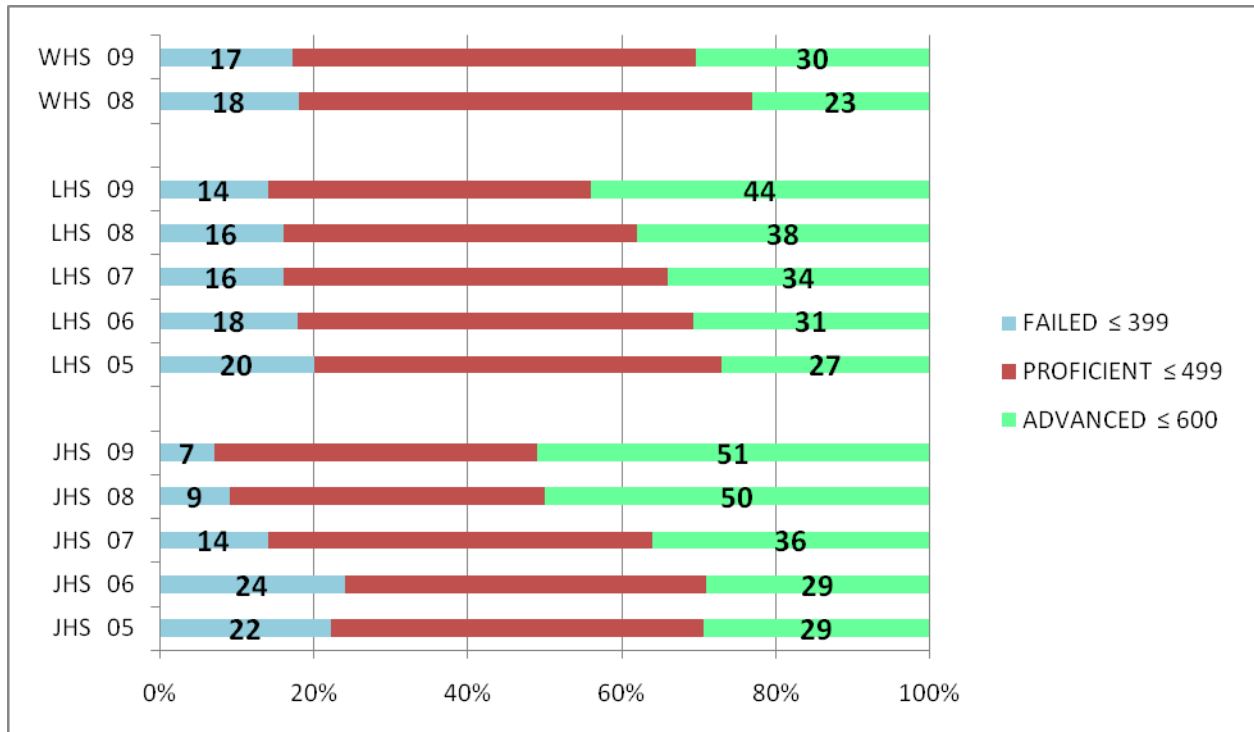


Middle School History

Advance rates increased from Spring 05 to Spring 09 in three schools (TMS+28, JMS+8, BMS+15).

Failure rates were reduced from Spring 05 to Spring 09 in two schools (TMS-4, BMS-1).

SOL Five Year Performance Trends – High School History

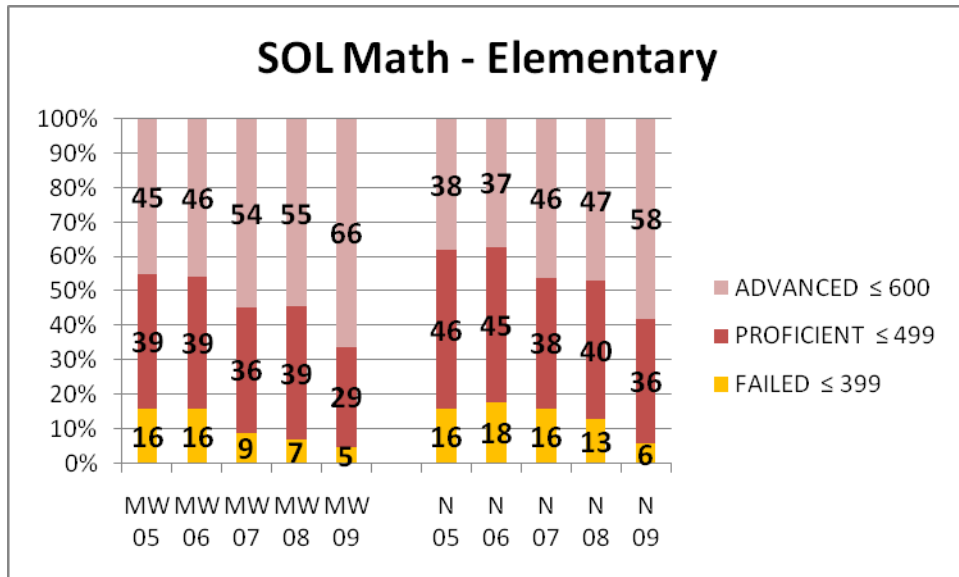
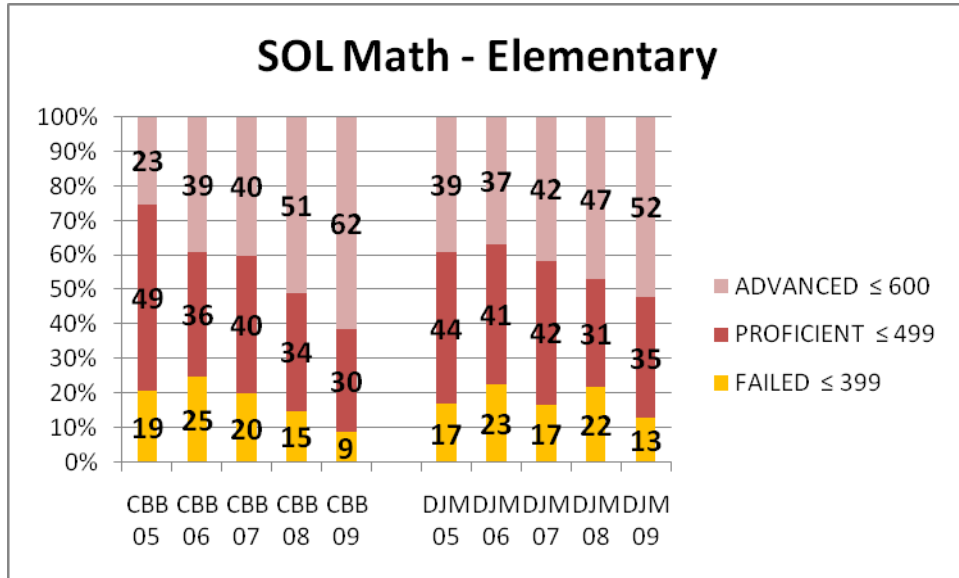


High School History

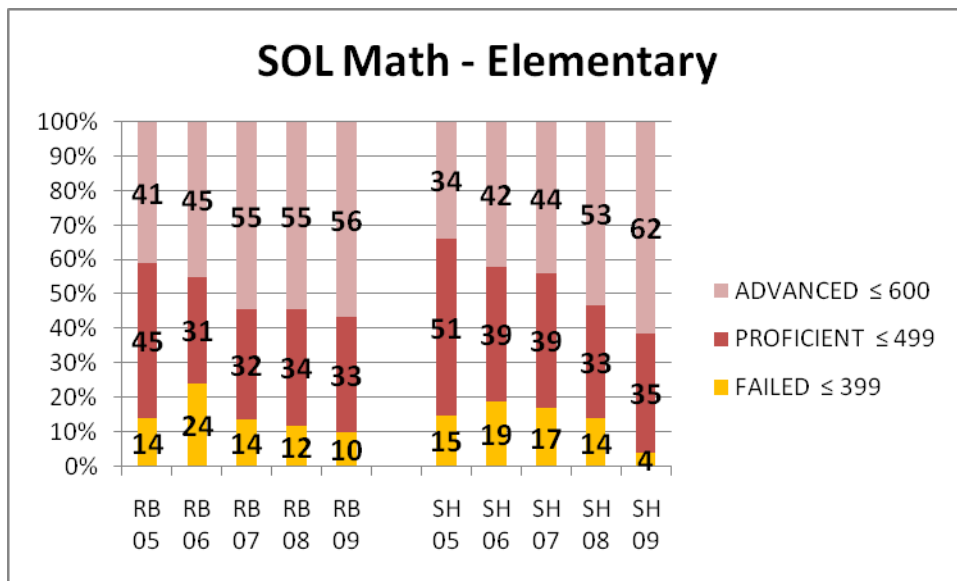
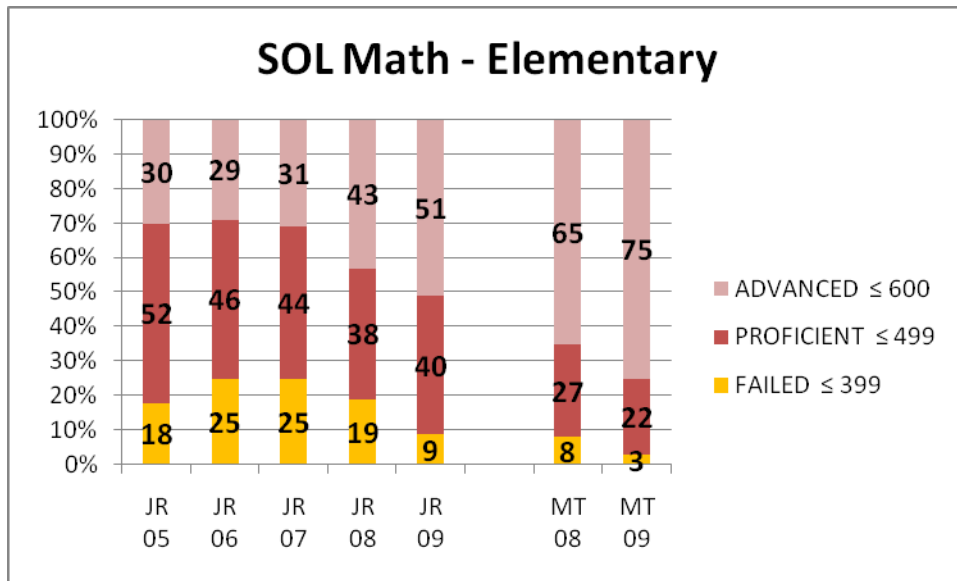
Advance rates increased from Spring 05 to Spring 09 in two schools (LHS+17, JHS+22) and WHS increased their advance rates by 7 percentage points from 08 to 09.

Failure rates were reduced from Spring 05 to Spring 09 in two schools (LHS-6, JHS-15) and WHS reduced their failure rate by one percentage point from 08 to 09.

SOL Five Year Performance Trends – Elementary Math



SOL Five Year Performance Trends – Elementary Math

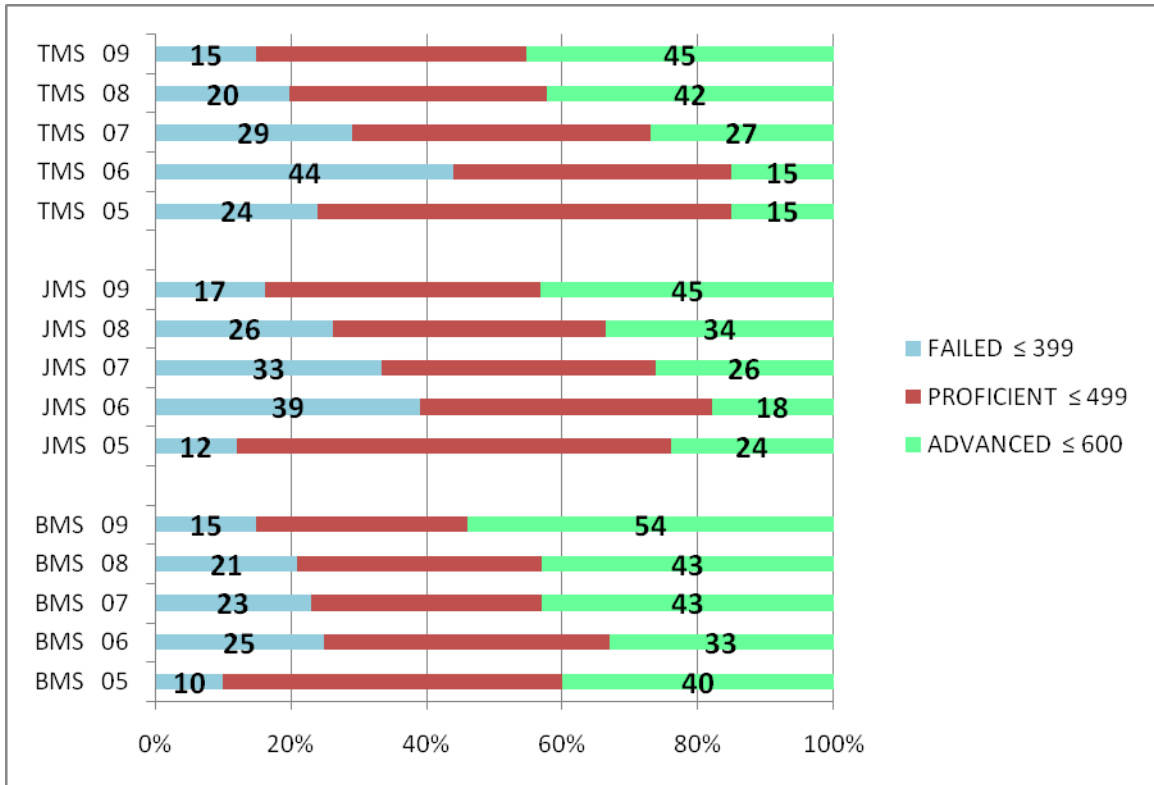


Elementary Math

Advance rates increased from Spring 05 to Spring 09 in seven schools (CBB+39, DJM+13, MW+21, N+20, JR+21, RB+15, SH+28) and MT's advance rate increased from 08 to 09 by 10 percentage points.

Failure rates were reduced from Spring 05 to Spring 09 in seven schools (CBB-10, DJM-4, MW-11, N-10, JR-9, RB-4, SH-11) and MT's failure rate from 08 to 09 was reduced by 5 percentage points.

SOL Five Year Performance Trends – Middle School Math

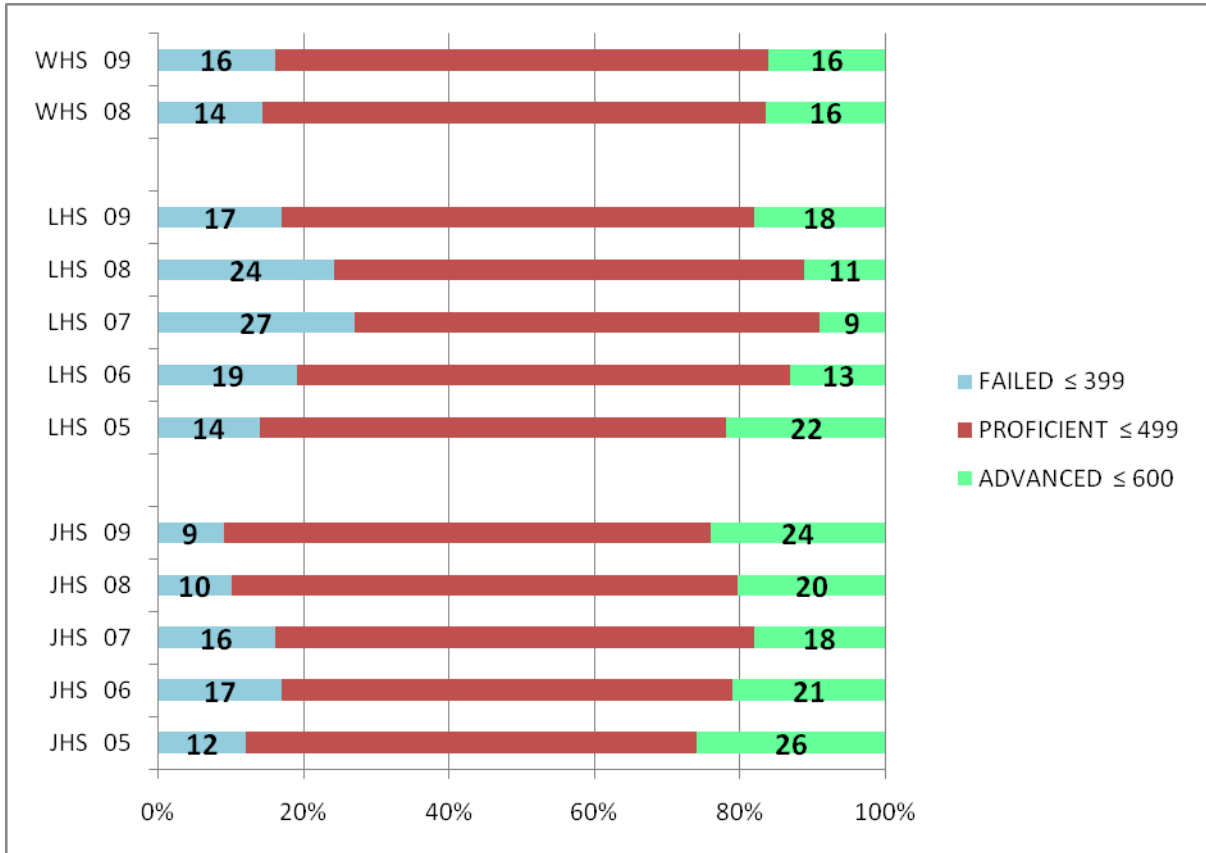


Middle School Math

Advance rates increased from Spring 05 to Spring 09 in three schools (TMS+30, JMS+21, BMS+14).

Failure rate was reduced from Spring 05 to Spring 09 in one school (TMS-9).

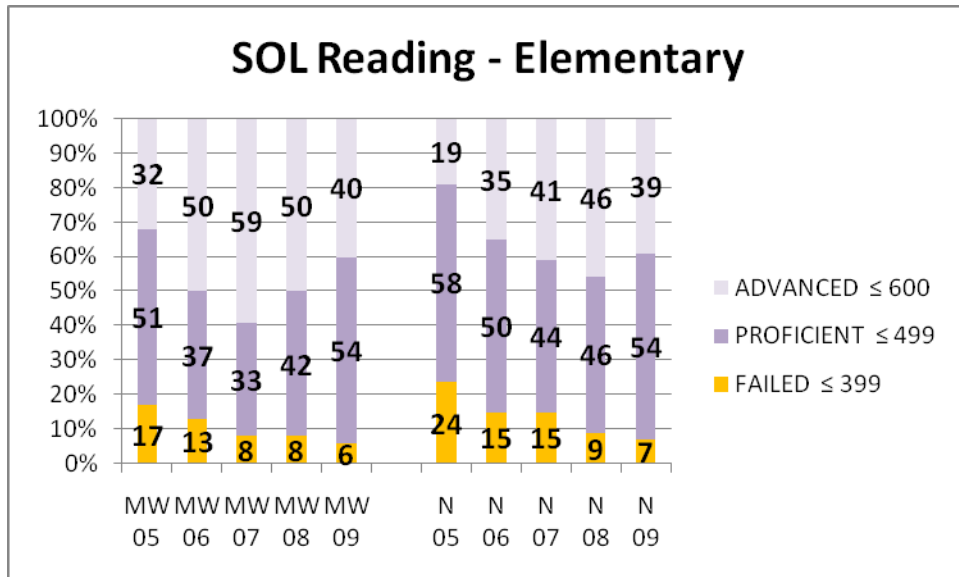
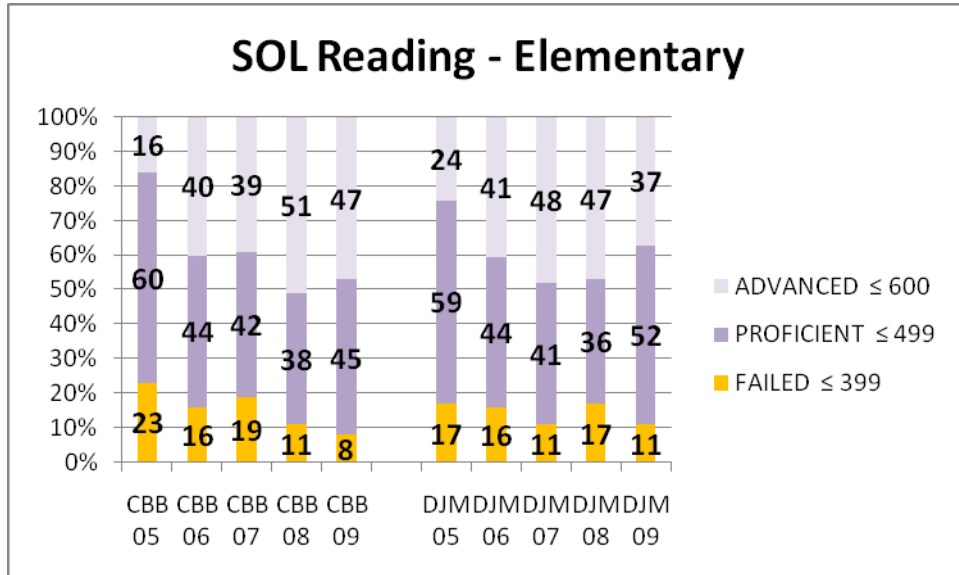
SOL Five Year Performance Trends – High School Math



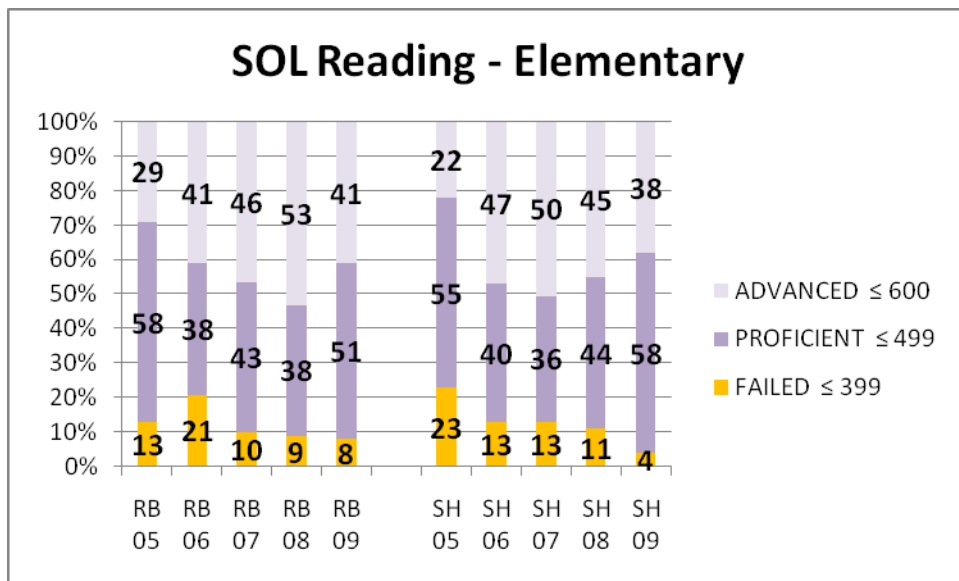
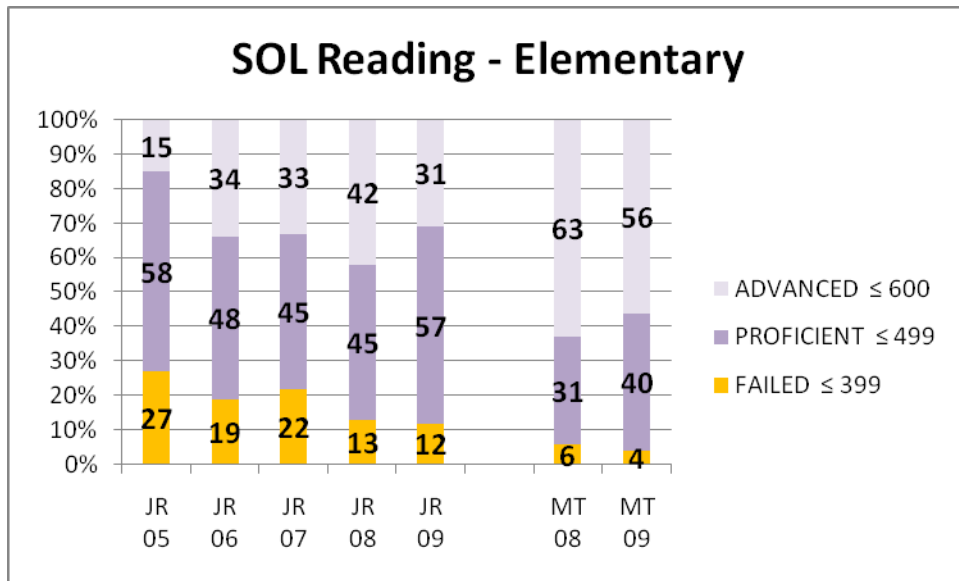
High School Math

Failure rate reduced from Spring 05 to Spring 09 in one school (JHS-3).

SOL Five Year Performance Trends – Elementary Reading



SOL Five Year Performance Trends – Elementary Reading

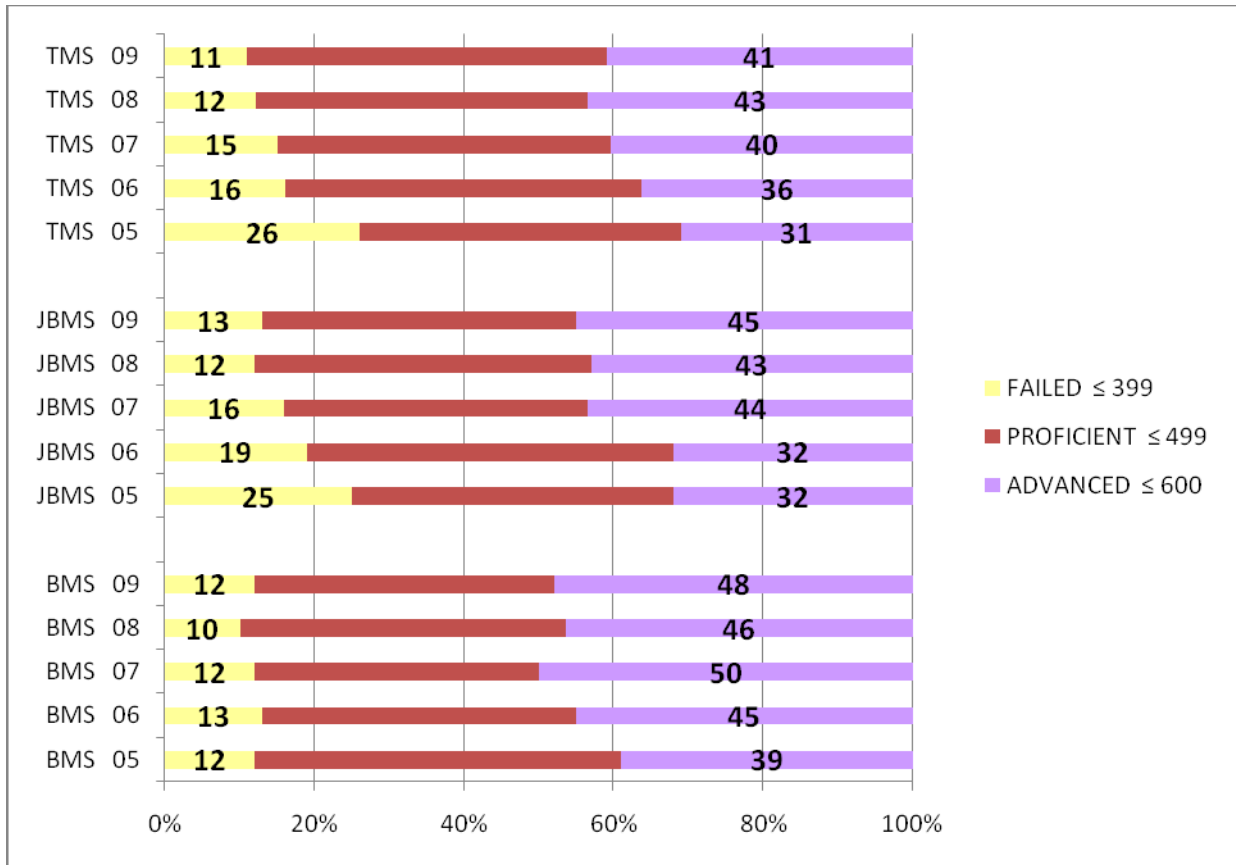


Elementary Reading

Advance rates increased from Spring 05 to Spring 09 in seven schools (CBB+31, DJM+13, MW+8, N+20, JR+16, RB+12 SH+16).

Failure rates were reduced from Spring 05 to Spring 09 in seven schools (CBB-15, DJM-6, MW-11, N-17, JR-15, RB-5, SH-19) and MT's failure rate from 08 to 09 was reduced by 2 percentage points.

SOL Five Year Performance Trends – Middle School Reading

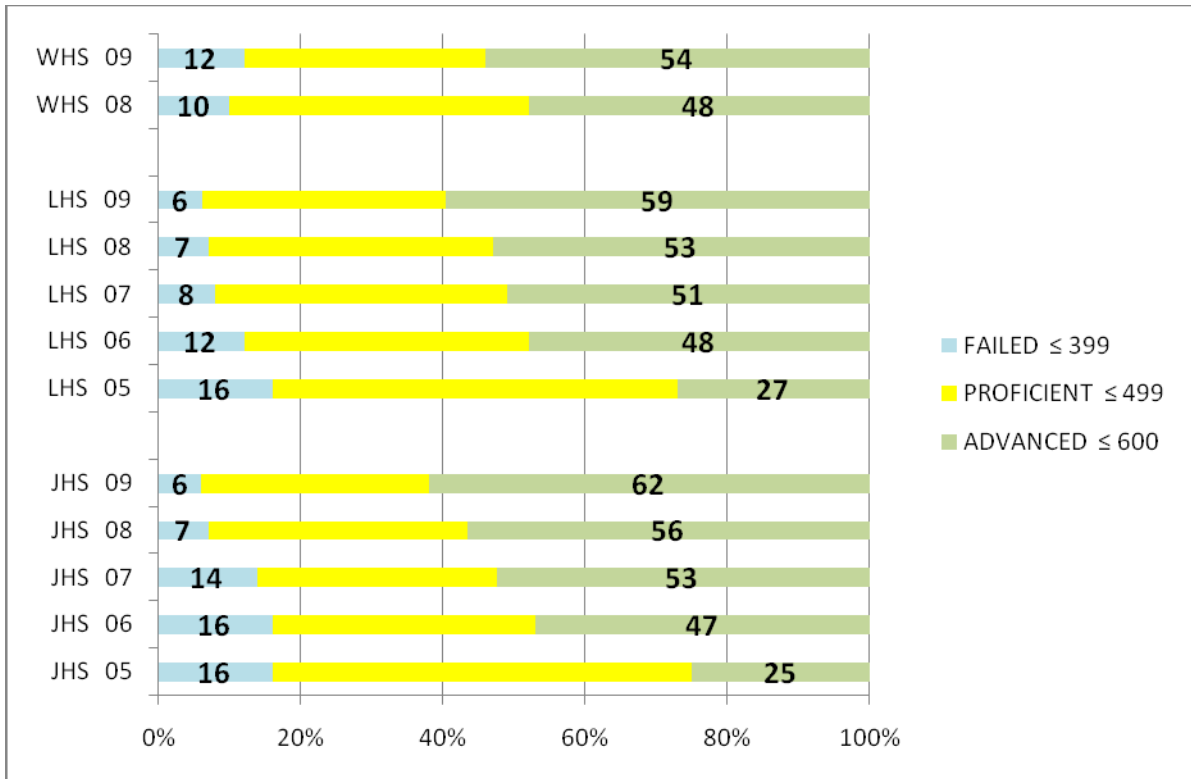


Middle School Reading

Advance rates increased from Spring 05 to Spring 09 in three schools (TMS+10, JMS+13, BMS+9).

Failure rates were reduced from Spring 05 to Spring 09 in two schools (TMS-15, JMS-12).

SOL Five Year Performance Trends – High School Reading

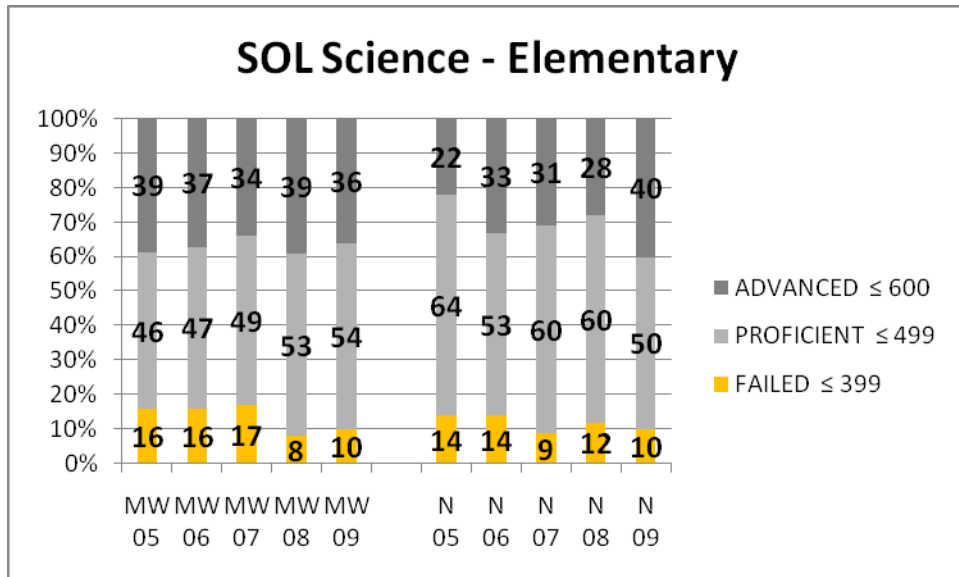
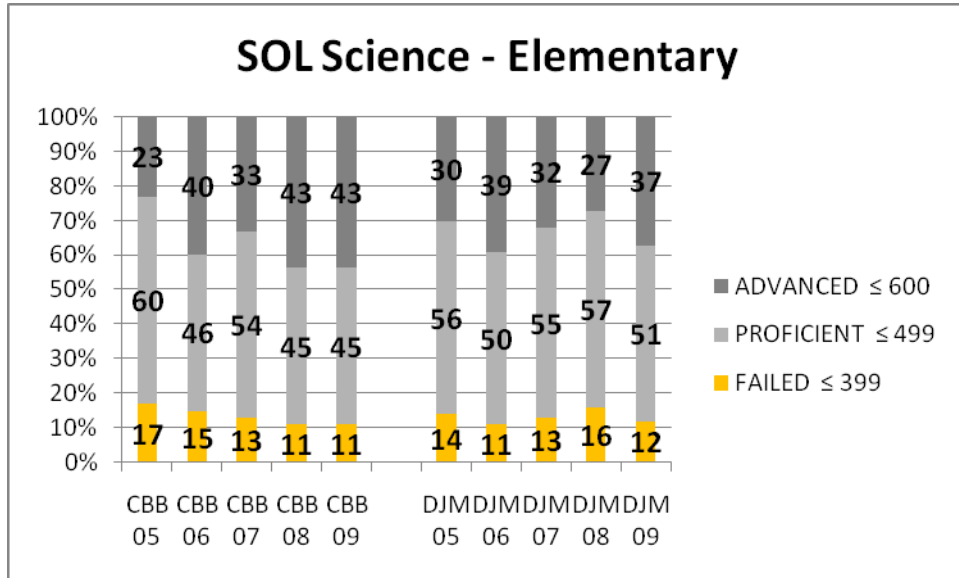


High School Reading

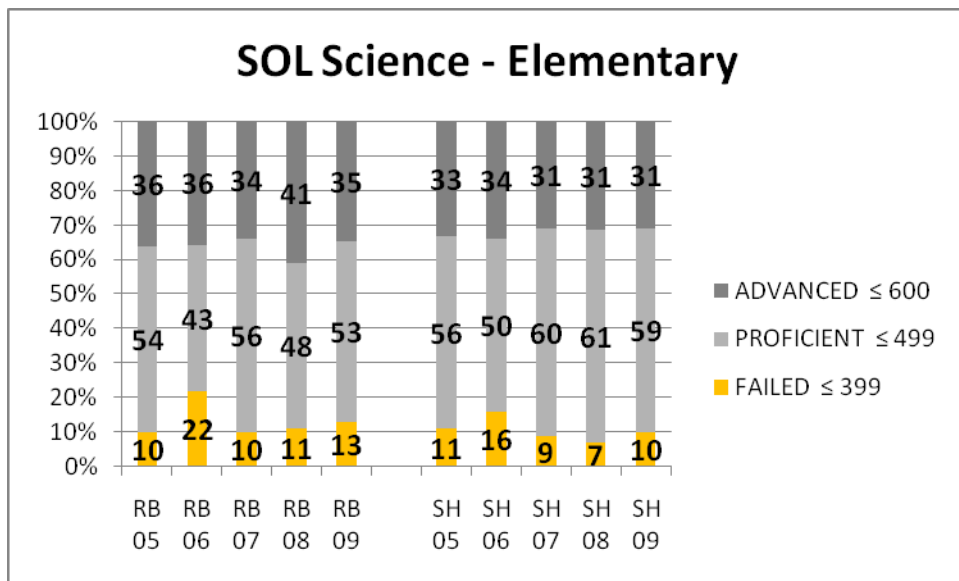
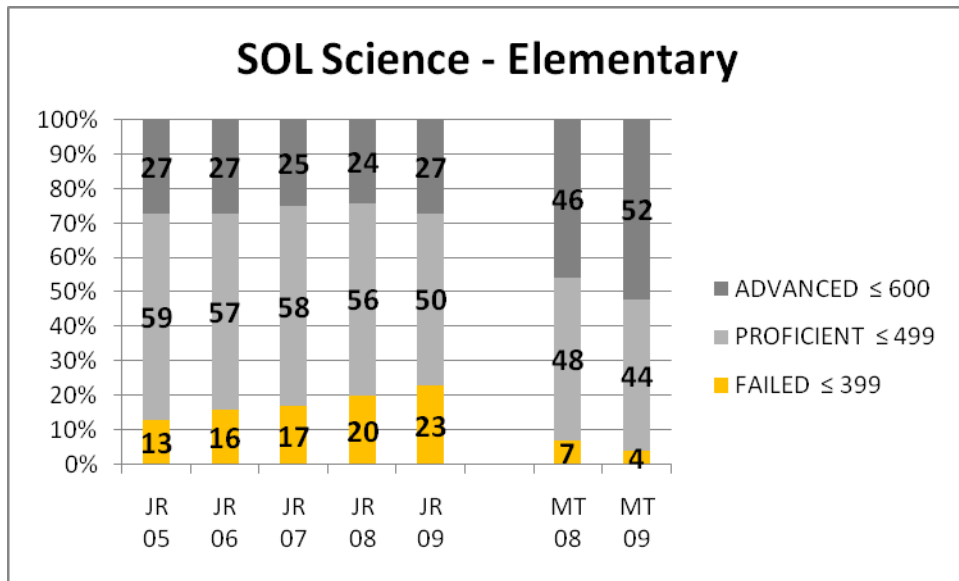
Advance rates increased from Spring 05 to Spring 09 in two schools (LHS+32, JHS+37) and WHS increased their advance rate by 6 percentage points from 08 to 09.

Failure rates were reduced from Spring 05 to Spring 09 in two school s(LHS-10, JHS-10).

SOL Five Year Performance Trends – Elementary Science



SOL Five Year Performance Trends – Elementary Science

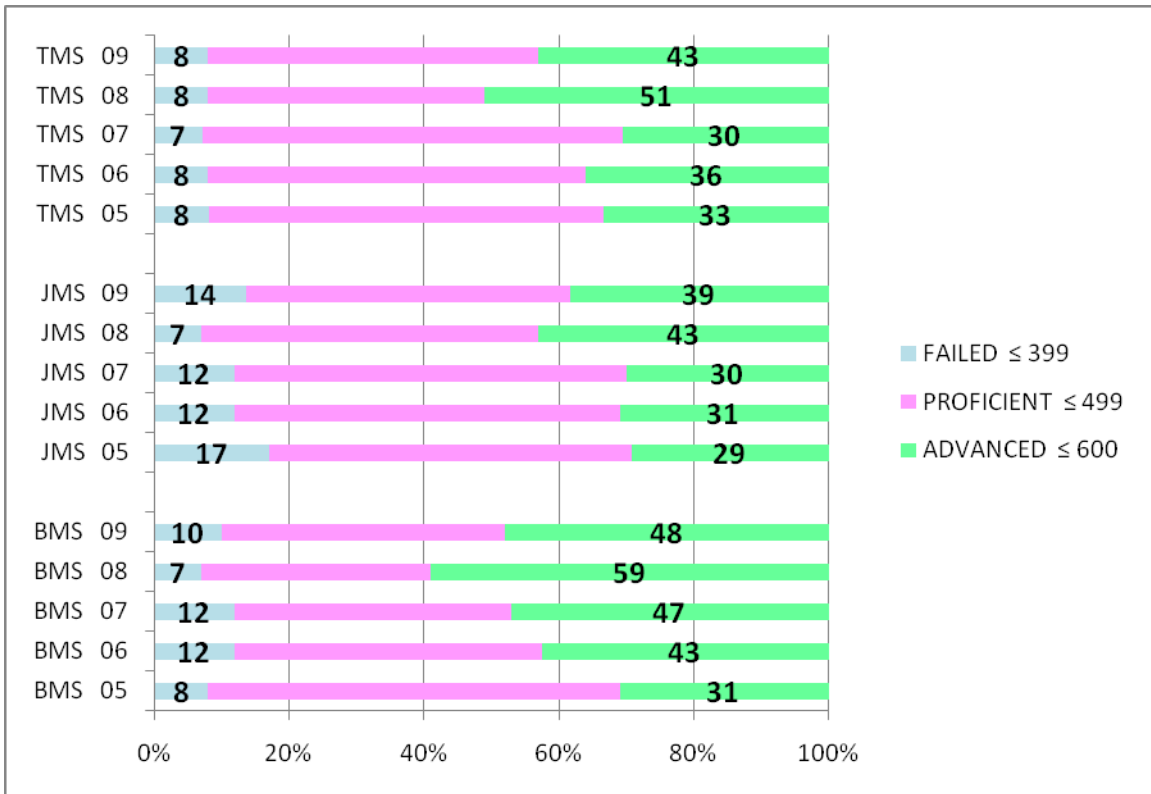


Elementary Science

Advance rates increased from Spring 05 to Spring 09 in three schools (CBB+20, DJM+7, N+18,)and MT advance rate increased from 08 to 09 by 6 percentage points.

Failure rates were reduced from Spring 05 to Spring 09 in five schools (CBB-6, DJM-2, MW-6, N-4, SH-1) and MT's failure rate from 08 to 09 was reduced by 3 percentage points.

SOL Five Year Performance Trends – Middle School Science

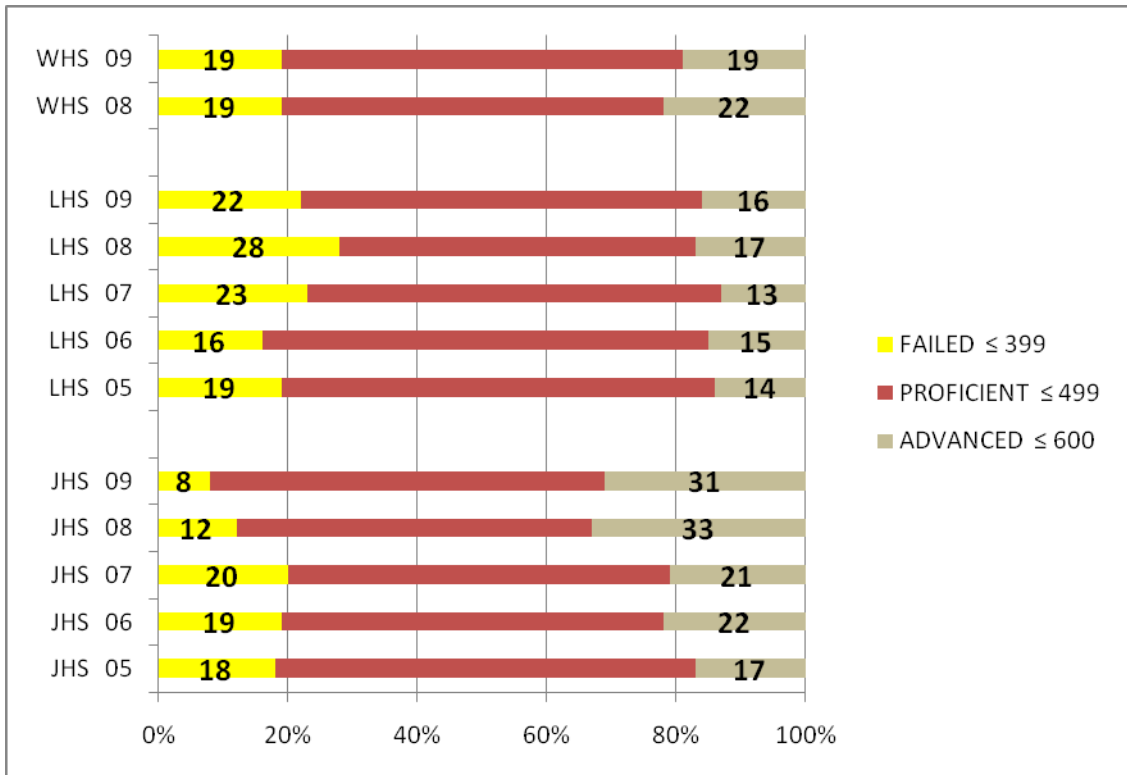


Middle School Science

Advance rates increased from Spring 05 to Spring 09 in three schools (TMS+10, JMS+10, BMS+17).

Failure rate was reduced from Spring 05 to Spring 09 in one school (JMS-3).

SOL Five Year Performance Trends – High School Science

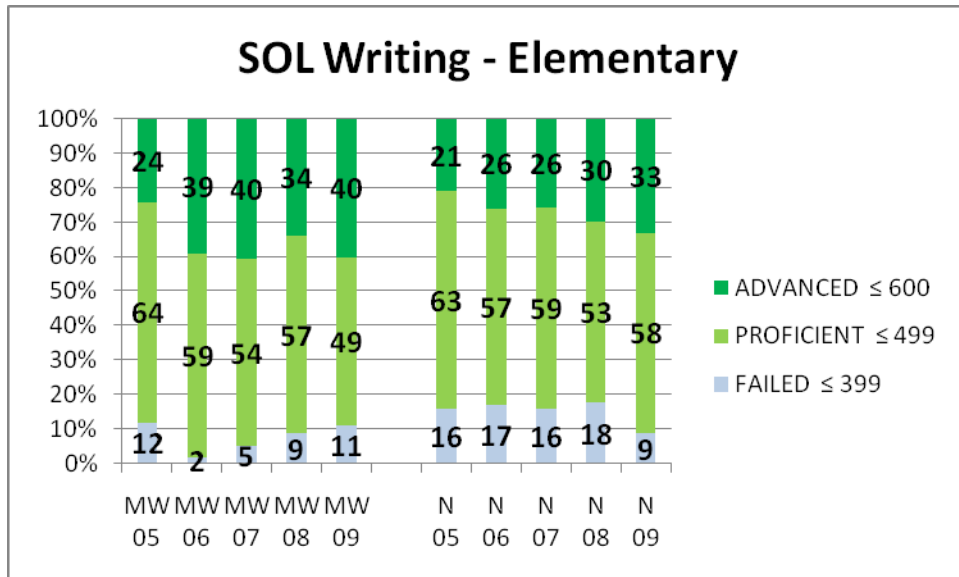
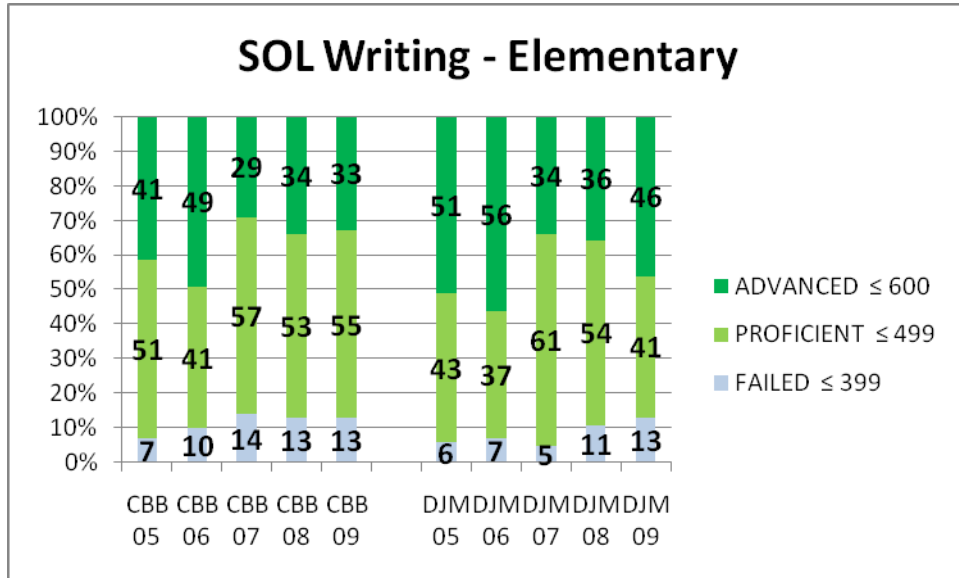


High School Science

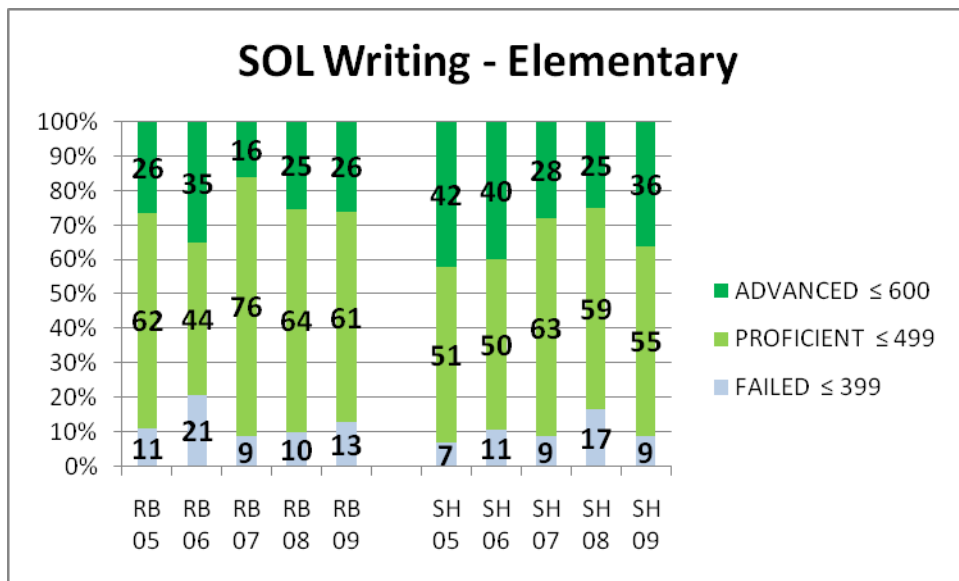
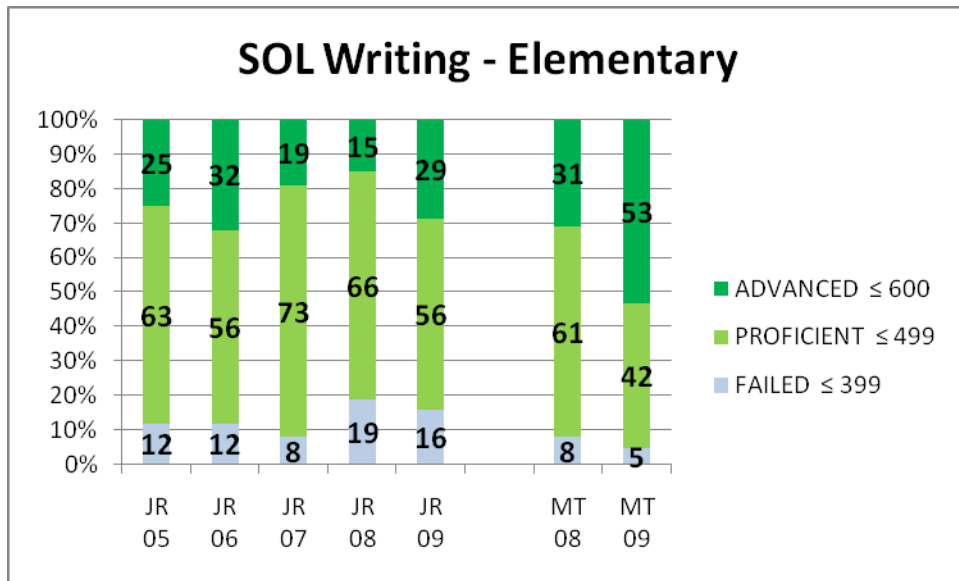
Advance rates increased from Spring 05 to Spring 09 in two schools (LHS+2, JHS+14).

Failure rate was reduced from Spring 05 to Spring 09 in one school (JHS-10).

SOL Five Year Performance Trends – Elementary Writing



SOL Five Year Performance Trends – Elementary Writing

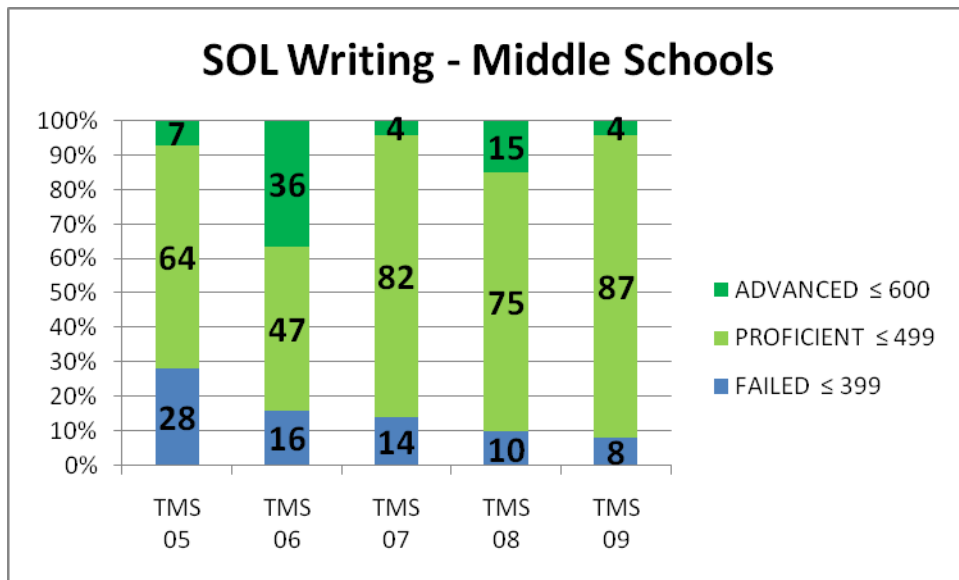
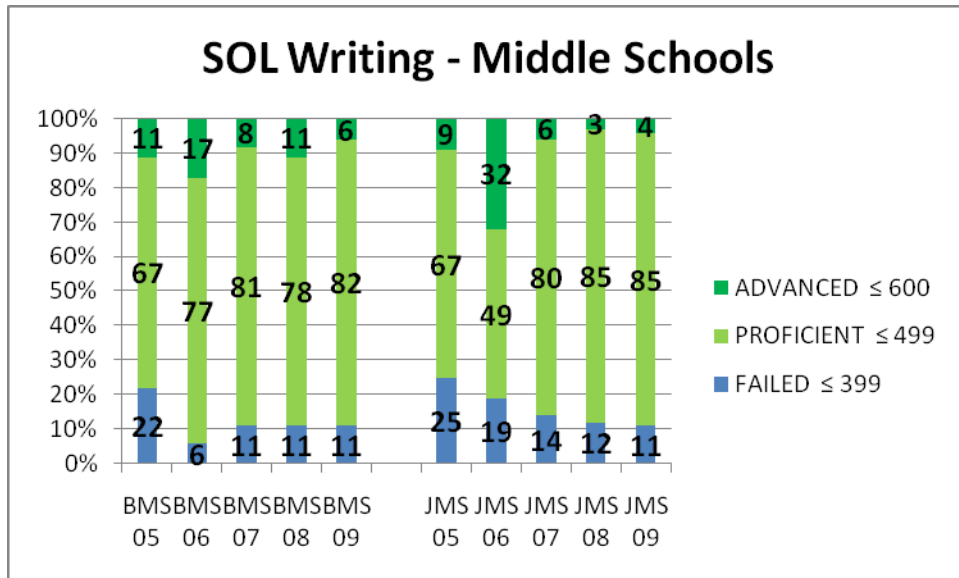


Elementary Writing

Advance rates increased from Spring 05 to Spring 09 in three schools (MW +16, N +12, & JR+4) and MT's advance rate increased from 08 to 09 by 22 percentage points.

Failure rates were reduced from Spring 05 to Spring 09 in two schools (MW -1, & N-9) and MT's failure rate from 08 to 09 was reduced by 3 percentage points.

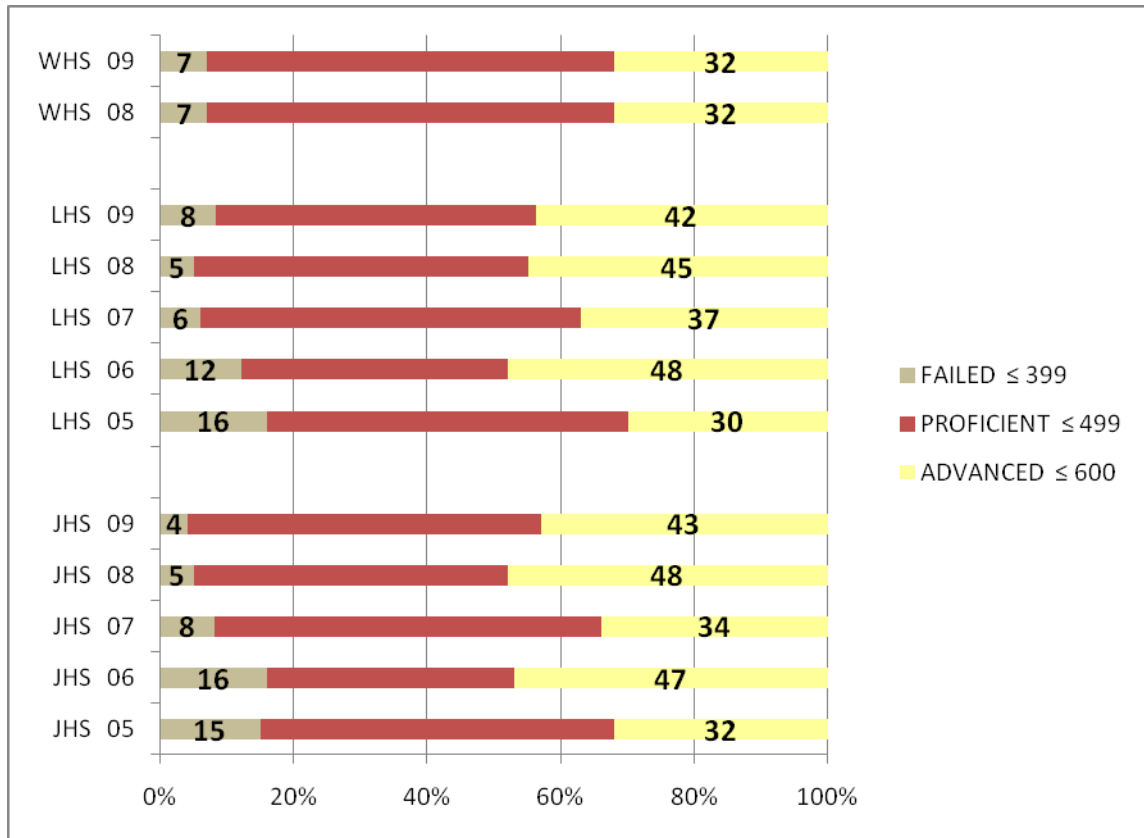
SOL Five Year Performance Trends – Middle School Writing



Middle School Writing

Failure rates were reduced from Spring 05 to Spring 09 in three schools (BMS-11, JMS-14, TMS-20).

SOL Five Year Performance Trends – High School Writing



High School Writing

Advance rates increased from Spring 05 to Spring 09 in two schools (LHS+12, JHS+11).

Failure rates were reduced from Spring 05 to Spring 09 in two schools (LHS-8, JHS-11).

Elementary History

Advance rates increased from Spring 05 to Spring 09 in six schools (CBB +34, DJM +4, N+16, JR+3, RB+15, SH+21) and MT's advance rate increased from 08 to 09 by 14 percentage points.

Failure rates were reduced from Spring 05 to Spring 09 in seven schools (CBB-20, DJM-2, MW-3, N-10, JR-6, RB-10, SH-10) and MT's failure rate from 08 to 09 was reduced by 13 percentage points.

Middle School History

Advance rates increased from Spring 05 to Spring 09 in three schools (TMS+28, JMS+8, BMS+15).

Failure rates were reduced from Spring 05 to Spring 09 in two schools (TMS-4, BMS-1).

High School History

Advance rates increased from Spring 05 to Spring 09 in two schools (LHS+17, JHS+22) and WHS increased their advance rates by 7 percentage points from 08 to 09.

Failure rates were reduced from Spring 05 to Spring 09 in two schools (LHS-6, JHS-15) and WHS reduced their failure rate by one percentage point from 08 to 09.

Elementary Math

Advance rates increased from Spring 05 to Spring 09 in seven schools (CBB+39, DJM+13, MW+21, N+20, JR+21, RB+15, SH+28) and MT's advance rate increased from 08 to 09 by 10 percentage points.

Failure rates were reduced from Spring 05 to Spring 09 in seven schools (CBB-10, DJM-4, MW-11, N-10, JR-9, RB-4, SH-11) and MT's failure rate from 08 to 09 was reduced by 5 percentage points.

Middle School Math

Advance rates increased from Spring 05 to Spring 09 in three schools (TMS+30, JMS+21, BMS+14).

Failure rate was reduced from Spring 05 to Spring 09 in one school (TMS-9).

High School Math

Failure rate reduced from Spring 05 to Spring 09 in one school (JHS-3).

Elementary Reading

Advance rates increased from Spring 05 to Spring 09 in seven schools (CBB+31, DJM+13, MW+8, N+20, JR+16, RB+12 SH+16).

Failure rates were reduced from Spring 05 to Spring 09 in seven schools (CBB-15, DJM-6, MW-11, N-17, JR-15, RB-5, SH-19) and MT's failure rate from 08 to 09 was reduced by 2 percentage points.

Middle School Reading

Advance rates increased from Spring 05 to Spring 09 in three schools (TMS+10, JMS+13, BMS+9).

Failure rates were reduced from Spring 05 to Spring 09 in two schools (TMS-15, JMS-12).

High School Reading

Advance rates increased from Spring 05 to Spring 09 in two schools (LHS+32, JHS+37) and WHS increased their advance rate by 6 percentage points from 08 to 09.

Failure rates were reduced from Spring 05 to Spring 09 in two schools (LHS-10, JHS-10).

Elementary Science

Advance rates increased from Spring 05 to Spring 09 in three schools (CBB+20, DJM+7, N+18,) and MT advance rate increased from 08 to 09 by 6 percentage points.

Failure rates were reduced from Spring 05 to Spring 09 in five schools (CBB-6, DJM-2, MW-6, N-4, SH-1) and MT's failure rate from 08 to 09 was reduced by 3 percentage points.

High School Science

Advance rates increased from Spring 05 to Spring 09 in two schools (LHS+2, JHS+14).

Failure rate was reduced from Spring 05 to Spring 09 in one school (JHS-10).

Elementary Writing

Advance rates increased from Spring 05 to Spring 09 in three schools (MW +16, N +12, & JR+4) and MT's advance rate increased from 08 to 09 by 22 percentage points.

Failure rates were reduced from Spring 05 to Spring 09 in two schools (MW -1, & N-9) and MT's failure rate from 08 to 09 was reduced by 3 percentage points.

Middle School Writing

Failure rates were reduced from Spring 05 to Spring 09 in three schools (BMS-11, JMS-14, TMS-20).

High School Writing

Advance rates increased from Spring 05 to Spring 09 in two schools (LHS+12, JHS+11).

Failure rates were reduced from Spring 05 to Spring 09 in two schools (LHS-8, JHS-11).