

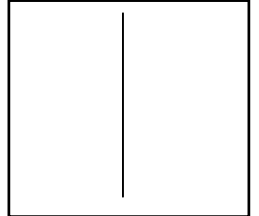
Creating Mirror Image Paintings

Butterfly Project

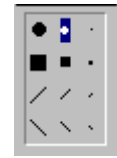
By Robb Ponton

1) Open the Paint program. (Click on the **Start** button. Select **Programs – Accessories – Paint.**)

2) Draw a straight line down the center of your paint area. (Move the cursor into your paint area. It will change to a pencil icon. Hold down the SHIFT key and DRAG the pencil toward the bottom of the paint area.)

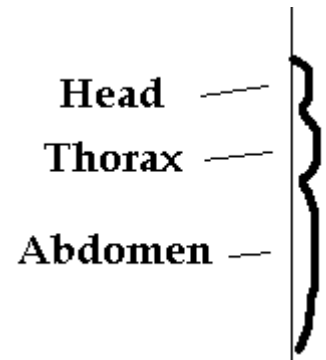


3) Don't use the pencil tool to paint your



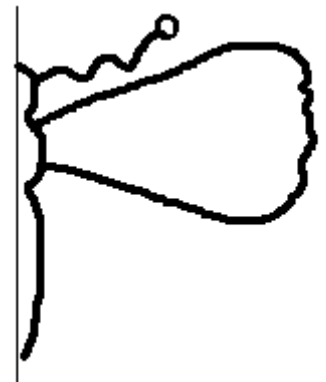
butterfly! The line is too thin. Select the paintbrush tool and the second largest brush size in the top row. This will give you a good dark outline.

4) Start your painting. Keep to one side of the midline. A butterfly has 3 body parts: a head, thorax, and abdomen.

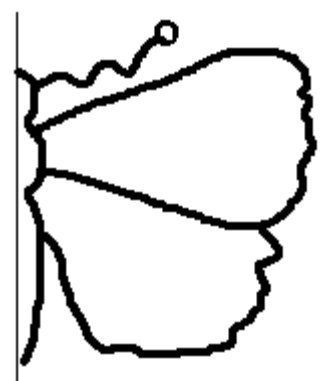


Remember, if you make a mistake immediately go to EDIT and select UNDO and then try again.

5) Draw the antenna and the top wing. A butterfly's wings are basically triangular in shape. The wing is attached to the thorax.



6) Draw the bottom wing. It is attached to the top wing.



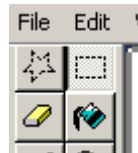
7) Create some designs on the butterfly's wings.



8) Use the Fill tool (paint bucket) to color your butterfly.



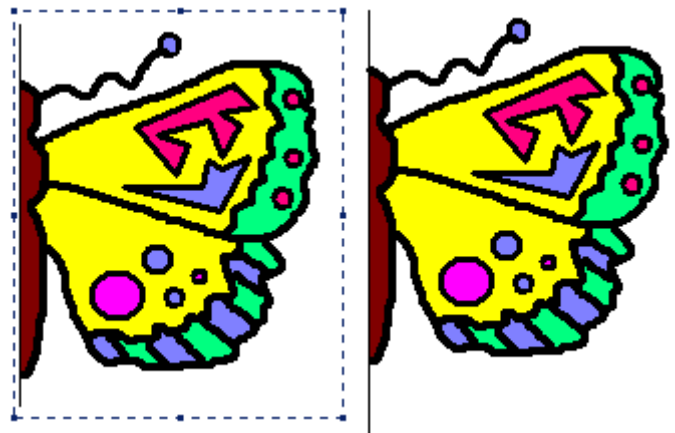
9) Click on the rectangular select tool.



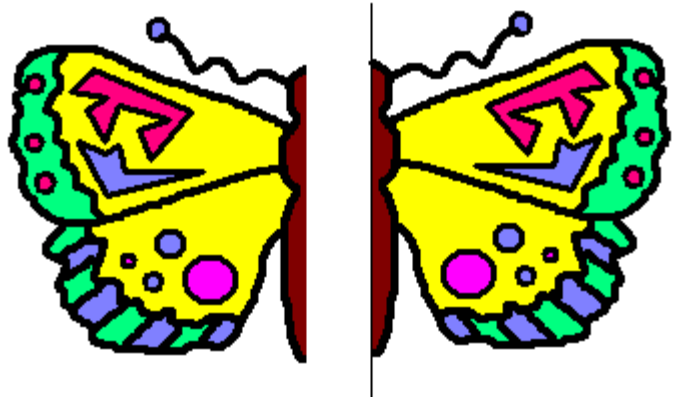
10) Carefully “select” your painting by pressing and dragging a “marching ants” box around your painting. (Start at the top of the midline and drag diagonally to the opposite corner.) Release the mouse.



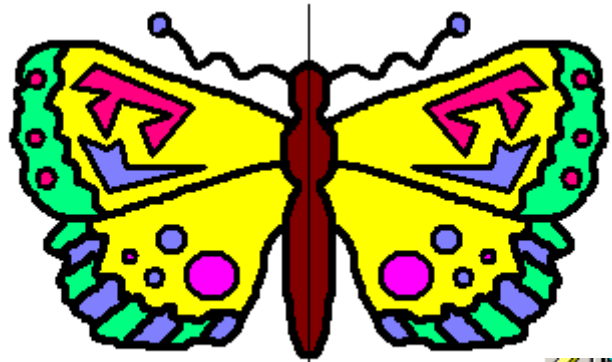
11) With your cursor in the middle of your butterfly. Hold down the Ctrl (Control) Key on your keyboard and then click and drag a copy moving it to the left side of the midline.



- 12) Go to IMAGE and select Flip/Rotate. Click on Flip Horizontally and click OK.



- 13) Carefully move one copy of your painting next to the other until both sides match. **Do not let go of the mouse until both sides match perfectly.**



- 14) To get rid of the line that runs down the middle of your painting, click on the Magnifier tool. Move the magnifier inside the paint area and click.



- Select the Pick Color Tool and click on the body color of your butterfly. Notice that the paint palette now shows the same color.
- Select the pencil tool and hold down the SHIFT key. Carefully click and drag down to recolor the black line.
- To return to normal view, select the Magnifier tool and click in your paint area again.



- 15) **Save your work in your folder on the F Drive. Name it your first name butterfly. (Ex. Joe Butterfly).**

- 16) If time allows, try to paint another insect or any symmetrical image you like. Ask for one of the books available for additional ideas.